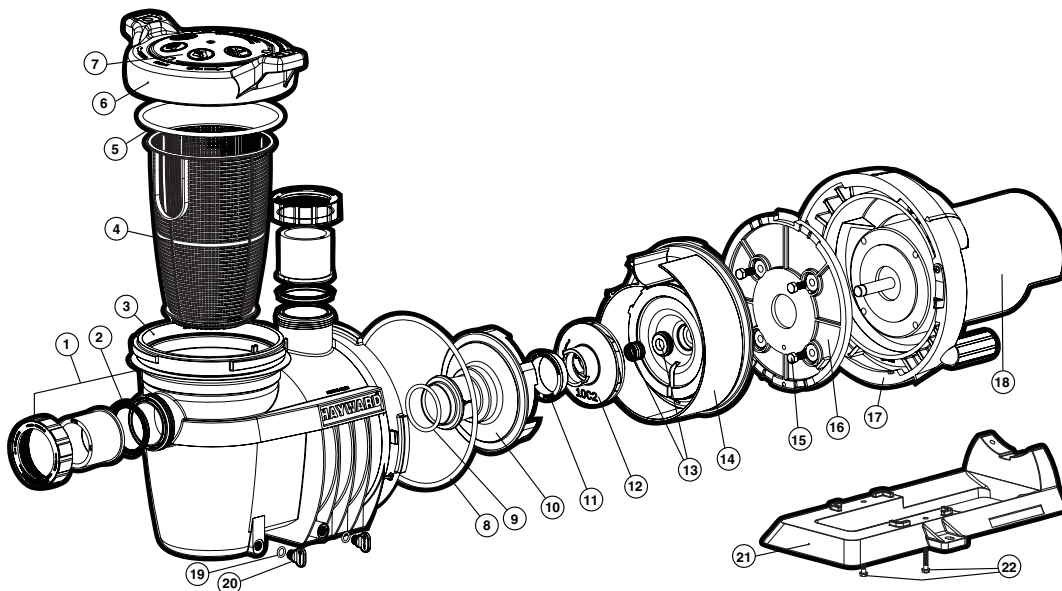




NorthStar™

SP4000X PUMP SERIES (ENERGY EFFICIENT, MAX-RATED) REPLACEMENT PARTS

Parts for Pump Models: SP4007X10(NS), SP4010X15(NS)/2(NS), SP4015X20(NS)/2(NS), SP4020X25(NS)/2(NS), SP4025X30(NS)



Ref. No.	Part No.	Description	Ctn. Qty.	List Price
1	SPX3200UNKIT	Union Connector Kit (includes 2 ea. Union Nut, Connector and Gasket) (2008 and later)	1	\$36.32
	SPX4000UNPAK1	Union Connector Kit (includes 1 ea. Union Nut, Connector and Gasket) (2007 and prior)	1	17.89
	SPX4000UNPAK2	Union Connector Kit (includes 1 ea. Curved Union Connector, O-Ring and Nut) (2007 and prior)	1	21.72
—	SPX4000HSGKIT	Housing Kit (includes Union Connector Kit (#1), Pump Housing (#3), Strainer Basket (#4), Strainer Cover Kit (#6 & 7) and Drain Plug with O-Ring (#19 & 20))	1	337.71
2	SPX3200UG	Union Gasket (T-Seal), 50 Duro EPDM (2008 and later)	1	9.66
	SPX4000Z1	Union O-Ring (2007 and prior)	10	9.66
3	SPX4020TP	Pump Housing, Threaded Port (2008 and later)	1	293.84
4	SPX4000M	Strainer Basket	1	20.90
5	SPX4000S	Strainer Cover O-Ring (2008 and later)	10	25.77
	SPX4000TS	Strainer Cover T-Ring (2003-2007)	1	25.77
	CX400G	Strainer Cover O-Ring (prior to 2003)	1	26.67
	GMX600F	Pressure Test O-Ring (2007 and earlier)	1	12.06
6 & 7	SPX4000CLO	Strainer Cover Kit (includes Strainer Cover, Lock Ring and O-Ring) (2008 and later)	1	77.84
	SPX4000CLOB	Strainer Cover Kit for Biguanide Sanitizers (2008 and later NOT Pressure Testable)	1	80.95
	SPX4000DLT	Strainer Cover Kit (includes Strainer Cover, Lock Ring and O-Ring) (2007 and prior)	1	85.00
	SPX4000DLTB	Strainer Cover Kit for Biguanide Sanitizers (2007 and prior NOT Pressure Testable)	1	85.00
8	SPX4000T	Seal Plate O-Ring	10	19.61
9	SPX4000Z1	Diffuser O-Ring	10	9.66
10	SPX4000B	Diffuser	1	29.41
11	SPX3021R	Impeller Ring	1	4.51
13	SPX3200SA	Seal Assembly	10	19.58
14	SPX4000E	Seal Plate	1	47.06
15	SPX0125Z44	Motor Bolt	1	7.09
16	SPX4000F	Motor Mounting Plate	1	41.85
17	SPX4000K	Motor Lock Ring	1	48.19
19 & 20	SPX4000FG	Drain Plug with O-Ring	10	3.34
21 & 22	SPX4000GA	Mounting Base with (2) Cap Screws	1	35.95
22	SPX1600Z52	Mounting Base Cap Screws (set of 2)	1	3.85

Parts listed below must be ordered for specific model & H.P.

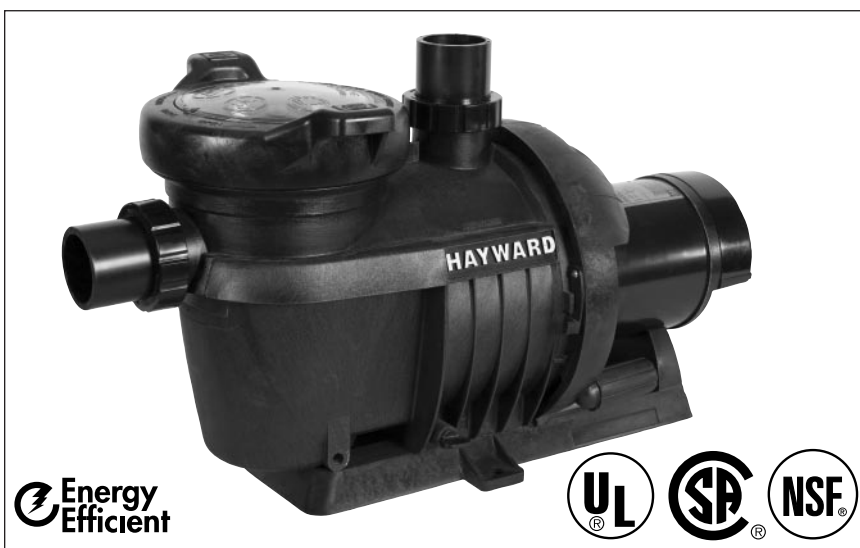
12	SPX4007CKIT	Impeller for 1 H.P. with Impeller Ring and Seal Assembly	10	\$44.81
	SPX4010CKIT	Impeller for 1 1/2 H.P. with Impeller Ring and Seal Assembly	10	47.37
	SPX4015CKIT	Impeller for 2 H.P. with Impeller Ring and Seal Assembly	10	51.22
	SPX4020CKIT	Impeller for 2 1/2 H.P. with Impeller Ring and Seal Assembly	5	51.22
	SPX4025CKIT	Impeller for 3 H.P. with Impeller Ring and Seal Assembly	5	51.22
18	SPX1607Z1MNS	Motor, 1 H.P.	1	367.97
	SPX1610Z1MNS	Motor, 1 1/2 H.P.	1	401.38
	SPX1610Z2MNS	Motor, 1 1/2 H.P., 2-speed	1	368.62
	SPX1615Z1MNS	Motor, 2 H.P.	1	446.33
	SPX1615Z2MNS	Motor, 2 H.P., 2-speed	1	451.35
	SPX1620Z1MNS	Motor, 2 1/2 H.P.	1	497.61
	SPX1620Z2MNS	Motor, 2 1/2 H.P., 2-speed	1	534.09
	SPX1625Z1MNS	Motor, 3 H.P.	1	639.09

NOTE: For models prior to 2003, when replacing either the impeller or seal assembly, must purchase the impeller kit to replace both to ensure compatibility.



NorthStar™

HIGH PERFORMANCE PUMP SERIES



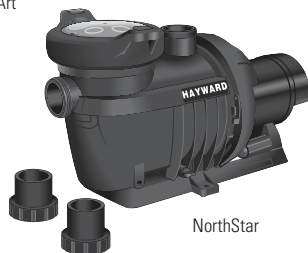
SP4015 1 1/2 H.P. NorthStar Pump

NorthStar Pump Buying Guide

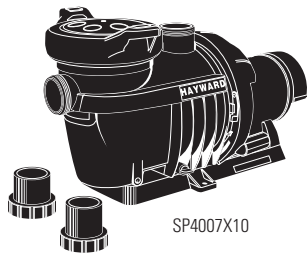
Model Number	Total H.P.	Rated H.P.	Service Factor	Voltage	Union Connectors	Dim. "A"	Ctn. Qty.	Ctn. Weight
Energy Efficient Full Rated Single-Speed								
SP4007	1.40	¾	1.85	115/208-230	2" x 2 ½"	13"	1	44 lbs.
SP4010	1.85	1	1.85	115/208-230	2" x 2 ½"	13 ¼"	1	49 lbs.
SP4015	2.40	1 ½	1.60	115/208-230	2" x 2 ½"	13 ¾"	1	57 lbs.
SP4020	2.70	2	1.35	208-230	2" x 2 ½"	14 ½"	1	63 lbs.
SP4030	4.80	3	1.60	208-230	2" x 2 ½"	16"	1	70 lbs.
Energy Efficient Max Rated Single-Speed								
SP4007X10	1.40	1	1.40	115/208-230	2" x 2 ½"	13"	1	44 lbs.
SP4010X15	1.85	1 ½	1.25	115/208-230	2" x 2 ½"	13 ¼"	1	49 lbs.
SP4015X20	2.40	2	1.20	115/208-230	2" x 2 ½"	13 ¾"	1	57 lbs.
SP4020X25	2.75	2 ½	1.10	208-230	2" x 2 ½"	14 ½"	1	63 lbs.
SP4025X30	3.60	3	1.20	208-230	2" x 2 ½"	14 ¾"	1	70 lbs.
Energy Efficient Max Rated Dual-Speed								
SP4010X152	1.88	1 ½	1.25	230	2" x 2 ½"	15 ¼"	1	49 lbs.
SP4015X202	2.40	2	1.20	230	2" x 2 ½"	16"	1	57 lbs.
SP4020X252	2.75	2 ½	1.10	230	2" x 2 ½"	16"	1	63 lbs.



Clip Art

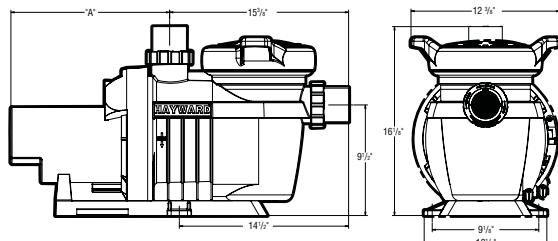


NorthStar



SP4007X10

Overall Dimensions



Designed for today's most demanding installations, the NorthStar is performance designed to maximize flow and minimize noise, and simplify service and installation. Features such as a high efficiency motor, CPVC unions, and Hayward's cam and ramp lid design will make NorthStar the pump choice of all pool professionals.

Applications

- In-ground pools of all types and sizes (including in-floor cleaning systems, solar heating systems, water features).
- In-ground spas or in-ground pool/spa combinations
- Fountains

Features

- Saves electricity and money through high-flow characteristics combined with an energy efficient motor.
- Exclusive, high-performance NorthStar motor design for quieter, cooler and more energy efficient operation.
- 2" x 2 1/2" CPVC union connections make installation and servicing fast and easy.
- Massive 220-cubic-inch straining basket extends time between cleanings.
- Cam and ramp lid seals with less than a quarter turn
- Pressure testable to 50 psi maximum
- Rugged, one-piece strainer housing for extra durability and long life.
- High-profile mounting base
- Self-priming (suction lift up to 10' above water level)

Performance Data

Full Rated Model No.	Max Rated Model No.	Pump Output (GPM) vs. Total Resistance to Flow (Feet of Head)					
		40 ft	50 ft	60 ft	70 ft	80 ft	90 ft
SP4007	SP4007X10	77	64	48	30	—	—
SP4010	SP4010X15	107	94	78	59	30	—
SP4015	SP4015X20	134	120	102	82	52	—
SP4020	SP4020X25	148	132	117	97	72	14
	SP4025X30	172	166	148	134	104	90
SP4030		170	170	170	161	143	126

Performance Data – Low Speed

Max Rated Model No.	Pump Output (GPM) vs. Total Resistance to Flow (Feet of Head)					
	5 ft	10 ft	15 ft	20 ft	25 ft	30 ft
SP4010X152	74	64	49	33	—	—
SP4015X202	80	68	55	35	—	—
SP4020X252	88	76	61	39	—	—