

## REPLACING AN ARMREST

To ensure that Human Touch® products are repaired in a manner that is fully consistent with the practices used during the manufacturing process, Human Touch requires that all product repairs are performed using only factory-new parts and in accordance with these product repair instructions.

SERVICE LEVEL: 2

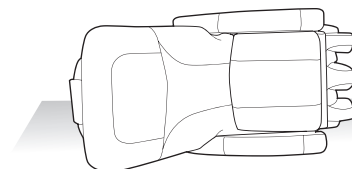
Tools Required: Large flat-head or Phillips-head screwdriver.

SAVE ALL REMOVED PARTS FOR USE DURING REASSEMBLY

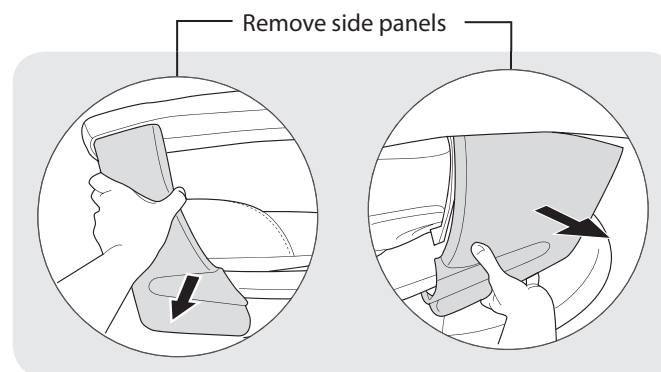
NOTE: TO REPLACE A WOOD ARMREST PANEL, SEE THE INSTRUCTIONS ON PAGE 3.

### REMOVING AN UPHOLSTERED ARMREST

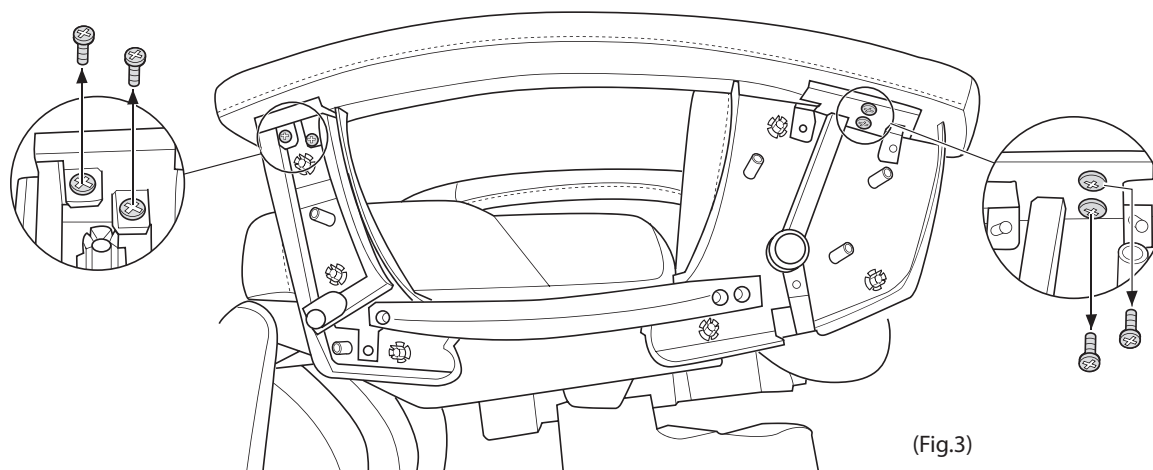
1. Use the remote control to fully retract the foot and calf massager.
2. Power off the chair and unplug it.
3. Using two people, turn the chair gently on its side, with the armrest you wish to replace on top (Fig.1).
4. Using your hands, pry off both side panels (Fig.2).
5. Using a large flat-head or Phillips-head screwdriver, remove the two armrest screws from the front of the armrest and the two armrest screws from the rear of the armrest (Fig.3).
6. Remove the armrest from the chair.



(Fig.1)



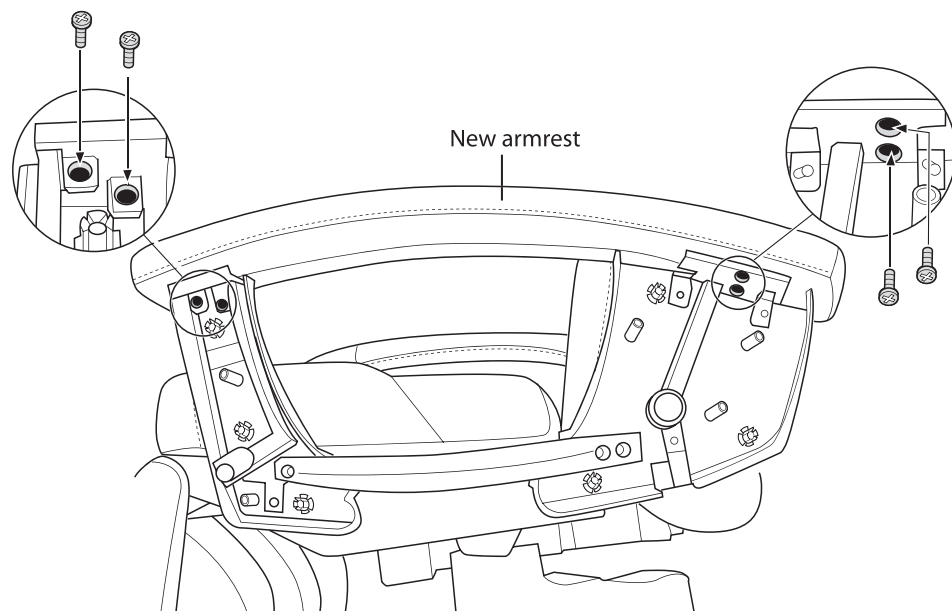
(Fig.2)



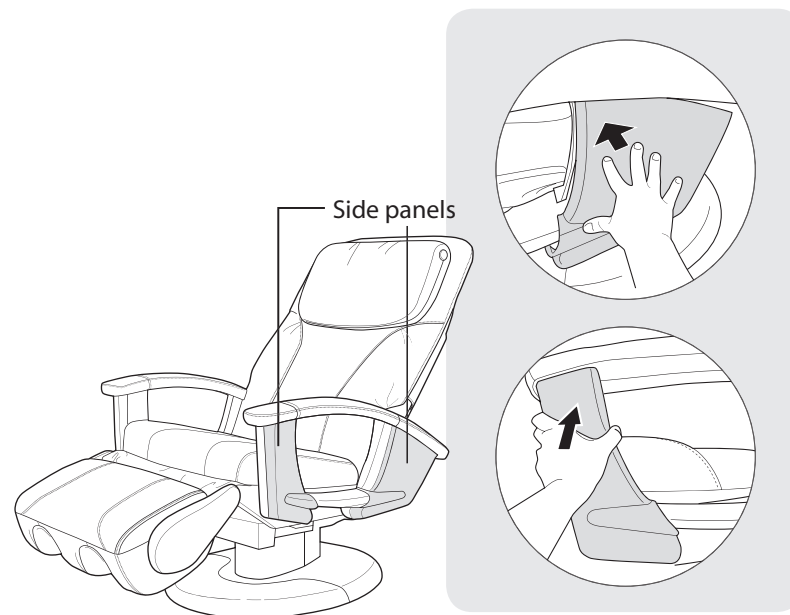
(Fig.3)

## INSTALLING A NEW UPHOLSTERED ARMREST

1. Place the new armrest into position, aligning the two brackets on the front of the armrest with the corresponding brackets on the chair side panel.
2. Using a large flat-head or Phillips-head screwdriver, replace the two front armrest screws, then replace the two rear screws (Fig.4).
3. Gently return the chair to an upright position.
4. Replace the side panels, by aligning the posts on the inside of the panel with the corresponding guides on the chair, then pushing the cover firmly into place (Fig.5).

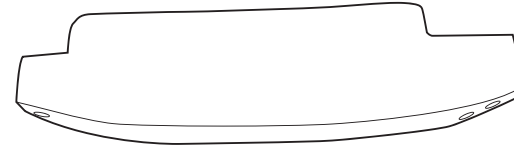


(Fig.4)



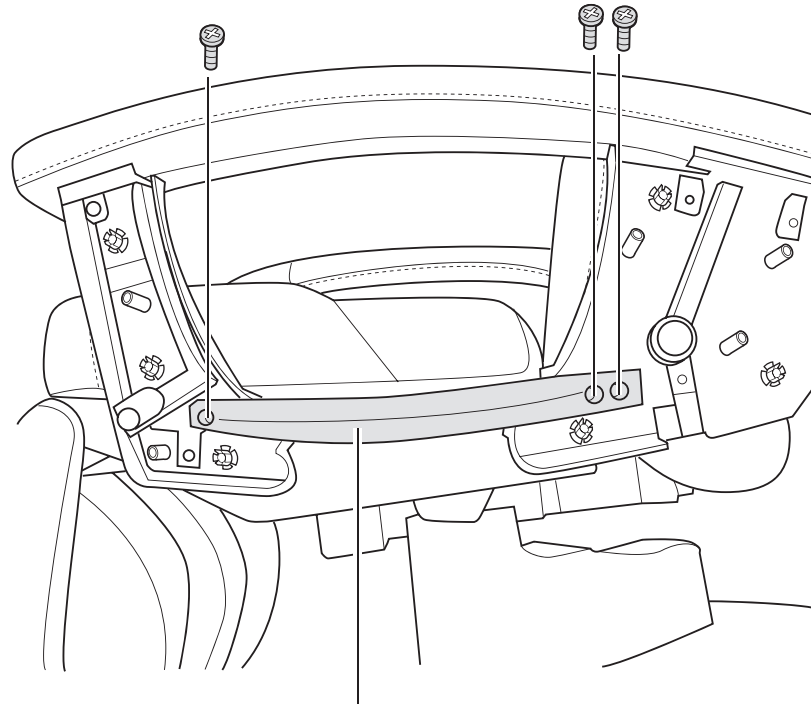
(Fig.5)

## REPLACING A WOOD ARMREST PANEL



Wood armrest panel

1. Remove both the front and rear side panels (Fig. 2).
2. Using a Phillips-head screwdriver, remove the three screws that secure the wood armrest panel to the chair (Fig.3).
3. Place the new wood armrest panel into position, then secure it using the three screws.
4. Replace both the front and rear side panels (Fig. 5).



Wood armrest panel

(Fig.3)