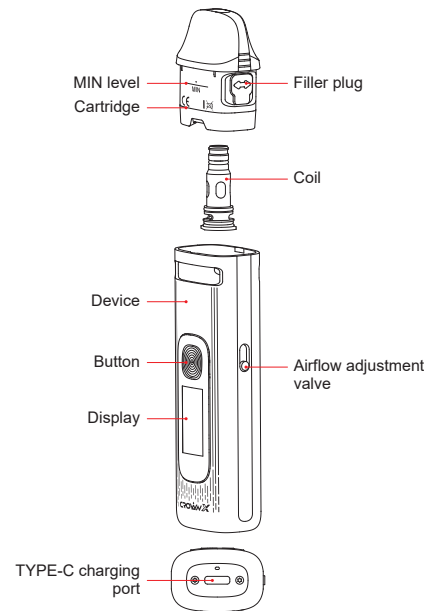


CROWN

User Manual

UWELL CROWN X Pod System

Illustration



Quick Guide

1. Take the cartridge off the device, then remove the insulating film from the bottom.
2. Open the filler plug to fill the cartridge with e-liquid, insert the cartridge back into the device, then wait for 10 minutes after its first filling.
3. Press the button 5 times in 2 seconds to turn on the pod system, then draw to vape.

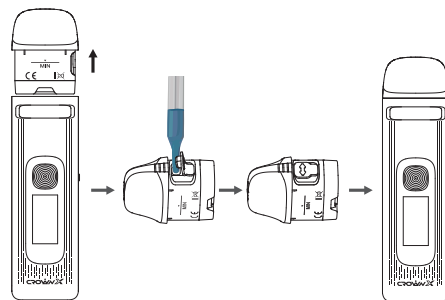
Specifications

- Materials: PCTG, Aluminium Alloy
- Dimensions: 113 mm × 30.8 mm × 21 mm
- Net Weight: Approx. 87.5 g
- E-liquid Capacity: 5.3 ml
- Output power: 60 W
- Coil Specifications:
 - FeCrAl Meshed 0.3 Ω UWELL CROWN X Coil
 - FeCrAl Meshed 0.6 Ω UWELL CROWN X Coil
- Battery Capacity: 1500 mAh

Instructions

1. Cartridge Filling and Replacement

- a. Take the cartridge off the new device for the first filling and remove the insulating film on the bottom of the cartridge before use.
- b. Open the filler plug and fill the cartridge with e-liquid.
- c. Put the filler plug back after filling.
- d. Insert the cartridge back into the device.
- e. For the cartridge replacement, please remove the used cartridge and insert a new one.

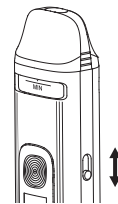


Attention:

- a. Insert the nozzle of the e-liquid bottle into the filling port to fill it with e-liquid.
- b. Please put the filler plug back as soon as the filling is done, and make sure it is properly sealed to prevent e-liquid leakage.
- c. Let the cartridge sit for 10 minutes after the first filling to avoid coil burning.
- d. Please make a timely refilling when the e-liquid is under the MIN level.

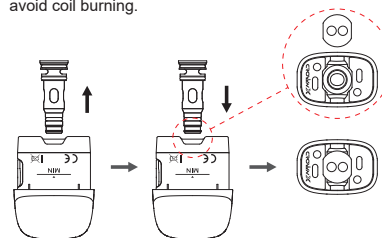
2. Airflow Adjustment

Slide the valve up and down to adjust the airflow.



3. Coil Replacement

- a. Remove the used coil from the cartridge, then insert the new coil.
- b. Align the new coil's tangent with the coil insertion port's.
- c. Let the cartridge sit for 10 minutes after the first filling to avoid coil burning.



4. Turn On/Off

Press the button 5 times within 2 seconds to turn on/off the device. The display will show "Hello UWELL" / "Goodbye" for 3 seconds.

Hello
UWELL

Goodbye!

5. Turn On/Off the Display (Standby)

- a. Turn on: The display will be on while turning on the device, charging the device or pressing the button.
- b. Turn off: The display will be off without operation for 20 seconds.

6. Vaping

Please take a draw or press the button to vape when the device is powered on.

7. Puff Record

- a. The device will only record puffs that last over 0.5 seconds. The puffs that last less than 0.5 seconds will not be counted.
- b. The maximum number of records is 9,999, and the recorded numbers will be reset when exceeding 9,999.
- c. Press the button 4 times in 2 seconds to clear the recorded numbers of puffing manually.

8. Power Adjustment

- a. Press the button 3 times in 2 seconds to enter into power adjustment mode. The power that displays on the screen will flash during the adjustment process.
- b. Press the button to choose a preferred power among the corresponding power range, or you can hold the button to adjust the power quickly. The value of the power will be displayed circularly while adjusting.
- c. Wait 3 seconds or take a draw to confirm your selection, then the device will exit the power adjustment mode and the power displayed on the screen will stop flashing.

Compatible Cartridges	Power Range
0.3 Ω UWELL CROWN X Pre-installed Coil Cartridge	5 W - 60 W
0.6 Ω UWELL CROWN X Pre-installed Coil Cartridge	5 W - 25 W

UWELL CROWN

9. Ignition Mode Switching

Press the button twice in 1 second to switch among auto mode, air activation mode and button activation mode.



10. Battery Level Indication

During vaping, the device will show the current battery level on the display.

Battery Level	Display
Over 80%	5 bars
60% ~ 80%	4 bars
40% ~ 60%	3 bars
20% ~ 40%	2 bars
1% ~ 20%	1 bar
Less than 1%	Low battery, the device will stop outputting.

11. Charging

Connect the device to a power source through a TYPE-C charging cable. The screen will show a dynamic charging icon and "Charging". When the charging is done, the screen will show a full battery icon and "Complete".



12. Protection and Indication

- Short-circuit protection: When a short-circuit occurs, the screen displays "Atomizer Short", and the device will stop outputting.
- Low voltage protection: When the power is low, the screen displays "Low Battery", and the device will stop outputting.
- Overtime protection: The screen displays "OVER 8s" to indicate an over 8-second vaping, and the device will stop outputting.

- Open-circuit protection: When an open-circuit occurs under a no pod or disconnection situation, the screen displays "No Atomizer".
- High-temperature protection: When the device's temperature is too high, the screen displays "Too Hot! Please Wait".



a



b



c



d



e

ATTENTION:

- Please charge with the certified power adaptor (5V/2A) and USB cable.
- Please remove the pod from the device and store it separately when you travel by air, for the air pressure change may cause leakage.
- Avoid high temperature, low temperature, flammables, explosives, water, and humid environment during the use or storage of the product. Please do not keep the product with hard objects to avoid damage. Please charge the device at least once a month.

WARNING

The new FDA regulations apply to the sales and distribution of all E-cig products.

- Do not give away free samples.
- It is prohibited to sell all types of E-cig products to people under the age of 21.
- It is prohibited to sell all types of E-cig products in vending machines except those specified by laws and regulations.
- It is prohibited to introduce products with "light", "low", "mild", or other similar descriptions in labels or advertisements into interstate trade.
- It is strictly forbidden to be used by young children, pregnant women, and women during breastfeeding or patients with heart disease, hypertension, diabetes, depression, and asthma. Keep the product out of the reach of children, non-smokers, and animals.

- Please do not drink it.
- It may contain nicotine, which is known to be a highly addictive substance.
- Swallowing or skin contact with this product may cause intoxication.
- Please keep away from flammables and explosives when using or charging to avoid hazards.
- Do not disassemble the product. The company won't be responsible for any product damage or personal injury caused by the improper operation.
- Please consult your local vape shop or contact us through service@myuwell.com if you need help using the product.

Product Verification

- Visit UWELL's official website www.myuwell.com to verify under the SUPPORT navigation bar.
- Please scan the QR code on the package with your phone camera to verify. The result will be displayed on the page.
- Or you can enter the 16-bit anti-counterfeit code on the surface of the user manual into the input box, and the result will be displayed within seconds.

Attention:

Please keep your package and the warranty card.

Warranty Period

180 days from the purchasing date.

Warranty Parts

Device and atomizer only. Coil and pod are excluded.

Warranty Service Excluded Conditions

- Expiration of warranty period.
- Damage caused by failure to use, maintain and keep the product according to the requirements of the product instructions.
- Damage caused by maintenance service personnel non-authorized by UWELL.

- Damage caused by using inferior accessories of other brands.
- Damage caused by the force majeure.

Warranty Service Guide

- You can ask the shop you purchased your vaping device for the warranty service.
- You can visit www.myuwell.com and ask for warranty service under the SUPPORT navigation bar.
- You can contact us through service@myuwell.com if you have any questions.

Please use your phone camera to scan the QR code for further information.

