

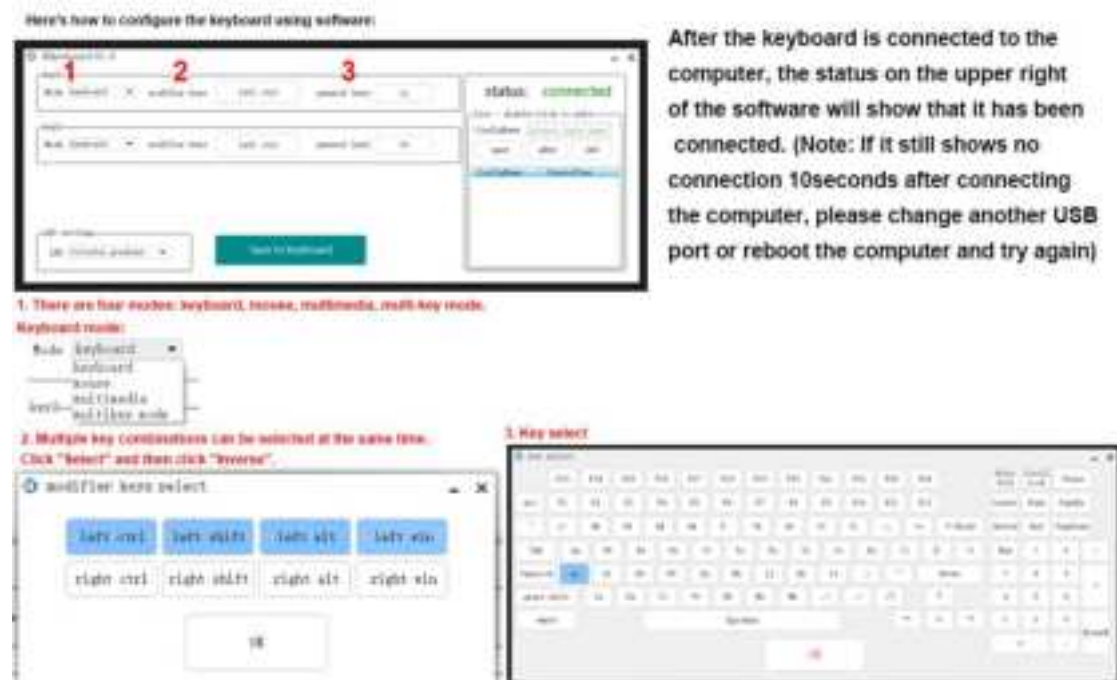
QINIZX RGB Macro Keypad Software Download Manual:

Basically all computer systems will recognize the executable file ".exe" as a virus, in fact it is not. please close the PC protection software, Download the configuration software in the eighth picture. and open the ".exe" file to start configuring .

Download in link : key.itytsoft.com



If the product you purchased is a 2-keys Keypad:



If the product you purchased is a 3-keys Keypad:

Here's how to configure the keyboard using software:



After the keyboard is connected to the computer, the status on the upper right of the software will show that it has been connected. (Note: If it still shows no connection 10seconds after connecting the computer, please change another USB port or reboot the computer and try again)

1. There are four modes: keyboard, mouse, multimedia, multi-key mode.

Keyboard mode:



2. Multiple key combinations can be selected at the same time.

Click "Select" and then click "Inverse".



3. Key select



If the product you purchased is a 4-keys Keypad:

After the keyboard is connected to the computer, the status on the upper right of the software will show that it has been connected. (Note: If it still shows no connection 10seconds after connecting the computer, please change another USB port or reboot the computer and try again)

Here's how to configure the keyboard using software:



1. There are four modes: keyboard, mouse, multimedia, multi-key mode.

Keyboard mode:



2. Multiple key combinations can be selected at the same time.

Click "Select" and then click "Inverse".



3. Key select



... And so on, set Key1, Key2,... different modes in small box.

Mouse Mode: Can set the left, middle and right mouse button, move and scroll wheel.



Multi-key Mode: Click the keys you need to input one by one with the mouse. Up to 15 keys are supported. (One-key Password)



LED setting:



Finally, Click the "save to keyboard" button, prompt save successful OK completed



Product Description:

Cherry MX Switches

Removable Data line

With Micro USB port (some product is type-C port), with 1.5M long data cable, The data line could be removed.

Non-slip Mat

Comes with 4x 8mm small paste non-slip pads, which can be attached to the four corners of the keyboard to prevent the keyboard from sliding back and forth when in use.

keyboard Mode: you can set the key combination/general key on the keyboard; you also can set as Game Controller buttons, used as shortcut keys for games with complex operations (Need the game to support "game controller").

Mouse Mode: you can manipulate cursor movement, mouse click, etc. (start with the current position of the mouse)

Mouse buttons: Operate the mouse buttons, left button, right button and middle button.

X axis: the horizontal axis of the cursor, Value range: 1-128 move to the right, 128-255 move to the left.

Y axis: the longitudinal axis of the cursor, Value range: 1-128 move to the up, 128-255 move to the down.

Scroll wheel: Value range: 1-128 go up, 128-255 go down.

Multimedia Mode: you can control playback, pause, cut song, adjust volume, etc. You can also open my computer, player, calculator, browser, email, etc. with one key.

Multi-key Mode: you can press a button to automatically enter the preset password (One-key Password).

The password supports ASCII characters such as letters, numbers, matches and spaces. Up to 15 keys are supported.

LED Mode: you can use to specify the on/off and press action display mode of the keyboard LED. eg. Water mode, table lamp, press display color etc.