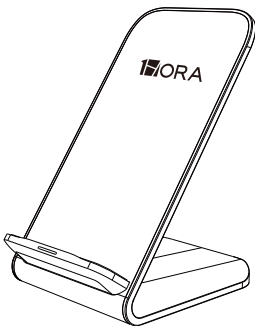


# 1HORA

## WIRELESS CHARGING CELL PHONE STAND 15W GAR157



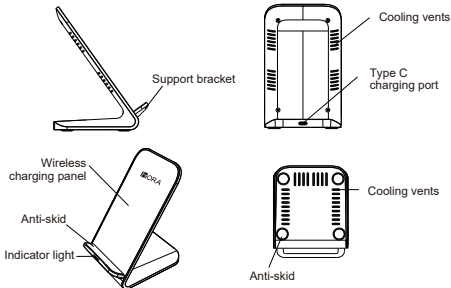
## USER MANUAL



# ABOUT THE PRODUCT

Thank you for purchasing our wireless charging cell phone stand, which adopts inductive fast charging mode. With its compact and luxurious design, it can be compatible with any mobile phone that incorporates wireless charging. Save more charging time with its efficient way to charge your device.

## PRODUCT DIAGRAM



## ACCESSORIES

1\* Wireless charging stand

1\* Type C cable

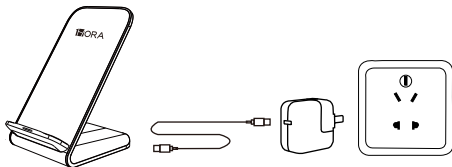
1\* User Manual

## COMPATIBLE DEVICES

1. Devices with built-in wireless fast / regular charging receiver.
2. Devices with an external wireless charging receiver.
3. Devices with the wireless charging receiver in a protective case.

# INSTRUCTIONS FOR USE

1. Connect the power adapter to the wireless charger via the Type-C cable. When the wireless charger is turned on, the red and blue lights will flash alternately once, and then the red light will stay on and enter standby mode.



2. Place your device vertically or horizontally in the center of the wireless charging stand until the device starts charging and the blue light is solid.
3. When charging is complete, the LED indicator at the bottom of the charger is always blue.

## NOTICE:

1. Recommended to use PD/QC adapter (18W or above charger).
2. Place your phone in the center of the wireless charger to ensure stable charging, do not place magnetic and metal accessories or cards on it.
3. If the blue light continues to flash, it is an abnormal state. Please check the charging equipment at this time, such as checking whether there are metal foreign objects on the phone.

# PRODUCT SPECIFICATION

Product: Wireless charging stand

Input: 5V $\overline{\sim}$ 2A/9V $\overline{\sim}$ 2A

Efficiency: 70%-80%

Output: 15W Max

Power: 5W/7.5W/10W/15W

Product Size: 69.5x85.6x117mm

## PRECAUTIONS

1. Keep the charger away from water or other liquids.
2. If you need to tilt the charger, please make sure the charger is turned off.
3. Recommended ambient temperature is 1-45 degrees Celsius.

## WARRANTY POLICY

During the warranty period, if the malfunction is caused by a manufacturing error, the user is requested to contact the dealer with this warranty card and the purchase receipt in order to have the product replaced or repaired.

### **The warranty is voided under the following conditions:**

1. There is no warranty card or the product's repair label has been damaged.
2. Damage caused by self disassembly.
3. Malfunctions and mechanical damage caused by the user or water ingress.
4. Faults or damages caused by accidents.

Product Name:
Customer Name:
Purchase Address:
Date of Purchase:
Remarks:



## WARRANTY INFORMATION

Jinxuan Electronics (Shenzhen) Co., Ltd.

A901, Building A, Galaxy WORLD, Bantian Avenue, Longgang District,  
Shenzhen, China

1Hora is committed to providing quality products. Our reliability does not end with the sales. 1Hora warrants this product against defects in material or workmanship. For 12 months from the original date of purchase.

### TERMS

The warranty covers only the original parts of the equipment (original equipment configuration) and the replacement and labor generated in the preparation process.

1. The warranty card is valid only if it is properly filled out and presented with a proof of purchase consisting of an original invoice or sales note indicating the date of purchase, the dealer's name, model number and serial number.
2. The company undertakes to repair or replace the products and their defective parts at no additional charge to the buyer.

### THIS WARRANTY IS NOT VALID IN THE FOLLOWING CASES:

A) When the product has been damaged by accident, disaster, neglect, transportation, misuse, abuse by failure to observe the warnings indicated in the user manual, and by modification or connection of an incompatible device to the device, or does not meet technical specifications.

B) When the product has not been operated in accordance with the accompanying instructions for use.

C) When the product has been altered or repaired by persons not authorized by Jinxuan Electronics (Shenzhen) Co., Ltd.

Product: \_\_\_\_\_ Brand: 1Hora

Date of purchase: \_\_\_\_\_

Reseller Name: \_\_\_\_\_

Reseller address: \_\_\_\_\_ Phone: \_\_\_\_\_

Buyer address: \_\_\_\_\_ Phone: \_\_\_\_\_

Jinxuan Electronics (Shenzhen) Co., Ltd. in no event shall be liable for any damages, including lost profits or other consequential damages, resulting from the misuse or inability to use such equipment.