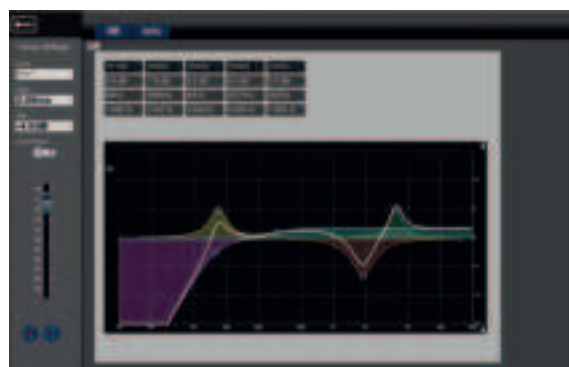
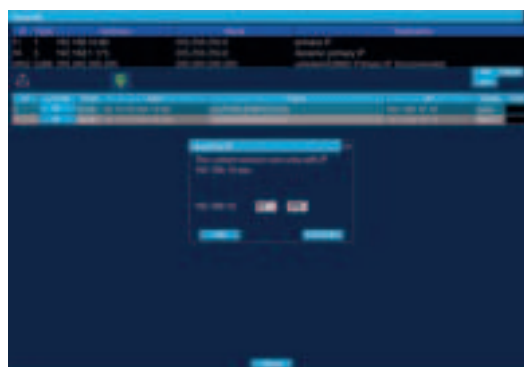


1. Scans all the devices in the network and adds it to the canvas. All group parameters are removed.
2. Scans all the devices in the network and adds it to the canvas. Groups are read from devices.
3. Scans the network and shows which units are the first in the chain.  
Device positions in the chain are saved internally.
4. Removes all the devices from canvas and all the groups.
5. Removes all the devices from canvas and keeps the groups.
6. Opens a system list with all the devices in the canvas and shows information about each device.
7. Opens a network list with all the devices connected to the same network.  
IP addresses can be changed here - only before the devices being added to the canvas.
8. System Mute - Mutes all the devices in the canvas.
9. View Mode - Changes the information shown on each device card in the canvas.
10. Zoom Option - Changes the zoom of the canvas.
11. Remove - Removes the selected devices.
12. Arrange - Aligns all the devices in the canvas (at the upper left corner).
13. Scan Hierarchy - Does the same as the number 3.
14. Align Upwards - Arrange the devices in the canvas with the first unit in the chain being the bottom one. All the devices in the chain will be on top of this one. Do "Scan Hierarchy" and select master device to be aligned prior to click the align button.
15. Align Downwards - Arrange the devices in the canvas with the first unit in the chain being the top one. All the devices in the chain will be below of this one. Do "Scan Hierarchy" and select the master device to be aligned prior to click the align button.
16. Daisy Chain - Automatically sets the input as "AESOP" and "Master" or "Slave" on the selected devices. The first device might need to be changed to "Analog" input manually.
17. Locate - Makes the LCD and LED's from the selected devices to blink.

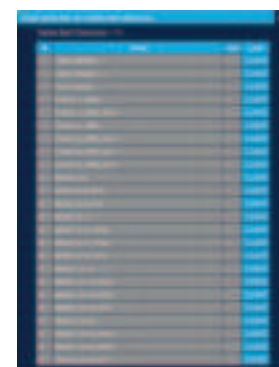
18. Preset Selector - Type the preset number on the text box and click the button to recall the preset number on all selected devices. Right click on the button to open a preset list available on the selected devices. Select one of them and click "load".
19. Preset Library Upload - Uploads the 24 presets to the selected devices. Used to update the speaker library when a new bundle of presets is available.
20. Add Group - Creates a new Group - Groups are automatically alphabetically ordered.
21. Select - Enters the selection mode to add devices to the group.  
First click on the group and then click on the devices to add or delete from the group.
22. Edit Group - Enter the edit page to edit the Group parameters:  
EQ, Group Name, Delay, Polarity, Mute and Gain.
23. Delete Group - Deletes the group.
24. Group Signaling - Makes the LCD and LED's from the group devices to blink.
25. Group Mute - Shows the actual mute status of the group devices (outputs).  
Grey: All devices unmuted | Orange: Some devices muted | Red: All devices mute  
Click to mute and unmute the grouped devices.
26. Edit Device - Edit the device parameters and check current status of limiters and faults.  
Edit: Name, Gain, Delay, Mute, EQ, FIR, Input Type, AES Fallback, Preset.
27. Device Mute - Mute the selected device Input.
28. Headroom Meter - Shows the headroom for each amplifier channel. When the LED reaches the yellow color means the limiters started working.
29. Alternate between "Setup" and "Live" mode. During Live, it's not allowed to make any changes on the canvas, scan new devices or hierarchy avoiding unwanted changes.
30. Alternate between "Mute" and "Solo" function. It defines the device mute button action. If in "Mute" the device is muted when clicked. If in "Solo" the rest of devices are muted.
5. Functionalities to be released soon.



Group Editor



Network Manager



Preset List

It is mandatory to change the computer IP to 192.168.10.xxx range to connect with the devices.