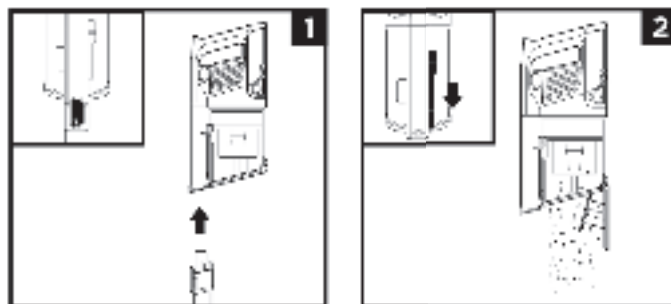






## MAINTAINING YOUR VACUUM

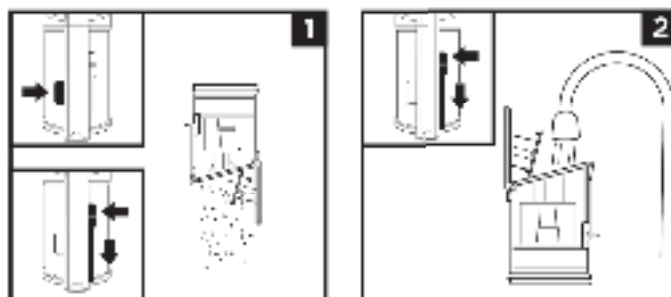
### EMPTYING THE DUST CUP



Press the hand release button to detach the handheld vacuum from the wand.

To empty the **Dust Cup** while it is attached to the handheld vacuum, pull the dust cup over a trash receptacle and slide the **Clean Touch™ Dirt Ejector** slider forward.

### REMOVING AND CLEANING THE DUST CUP



To remove the dust cup from the handheld vacuum, press the **Clean Touch™ Dust Cup Release** button near the handheld vacuum motor. Lift the dust cup and the filter(s) to remove.

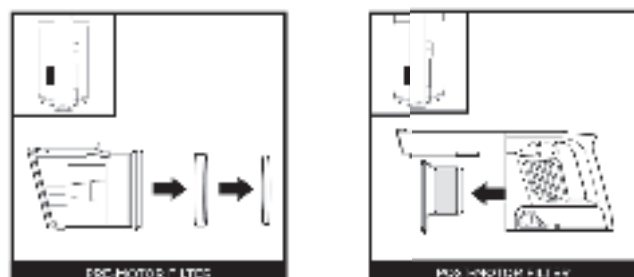
To empty dust and debris, hold the dust cup over the trash, then slide the **Clean Touch™ Dirt Ejector** slider forward.

To clean the interior of the dust cup, rinse it with water. Rinse the inside with the dust cup in a sink for at least 24 hours before reinserting.

### CLEANING THE FILTERS

To clean filters, rinse them with water only. Allow all filters to dry completely for at least 24 hours before reinserting to prevent them from losing shape into another form. Clean the pre-motor filter at least once a month and post-motor or HEPA filter at least once a year. Tap off any dirt between washes when needed. More frequent cleaning may sometimes be necessary with heavy use. Cleaning the filters regularly helps maintain your vacuum's cleaning performance.

**IMPORTANT:** Do NOT use soap when cleaning the filters. Use warm water.



Pre-Motor Filter

Press the dust cup release button and remove the dust cup. Pull the foam and felt filters out of the back of the dust cup.

Remove the dust cup. Pull the post-motor filter out of the handheld vacuum.



Pre-Motor Foam and Felt Filter (Fig. 4)



Post-Motor HEPA Filter

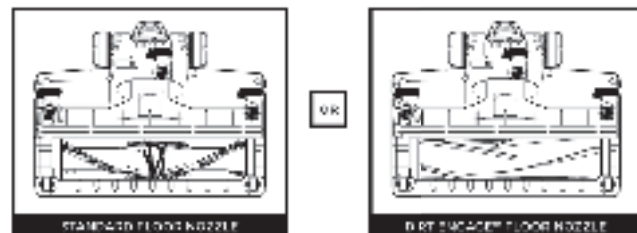


Post-Motor Filter

**NOTE:** Not all units come with a HEPA filter.

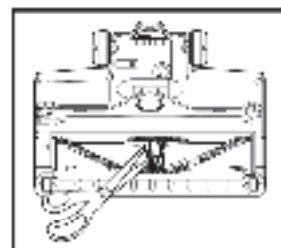
## FLOOR NOZZLE

If you run over a hard or sharp object or notice a noise change while vacuuming, check for blockages or objects caught in the brushroll.



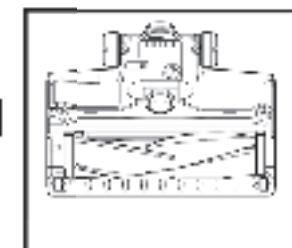
1. Turn off the vacuum.
2. Using a coin, turn the counter-clockwise to open, then lift off cover to access brushroll.
3. Clear away all clogs.
4. Replace cover by sliding it into slots, then pressing down firmly on all sides before turning the cover clockwise to close. There will be an audible click once the locks are secured.

### CLEANING STANDARD BRUSHROLL



Remove any string, carpet fibers, or hair that may be wrapped around the brushroll by using scissors to help loosen debris.

### CLEANING DIRT ENGAGE BRUSHROLL



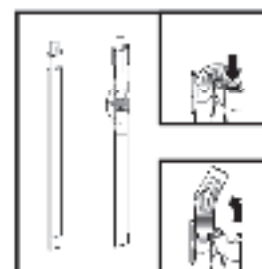
If one hair is wrapped around the brushroll, continue cleaning using the Carpet Setting on a bare floor surface, a low pile carpet, or a small area rug. If one or more hairs remain wrapped around the brushroll after continued use, manually remove them from the brushroll.

## CHECKING FOR BLOCKAGES



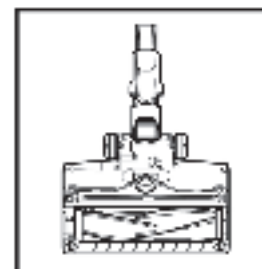
### Checking for Blockages in the Handheld Vacuum:

1. Turn off vacuum.
2. Remove the handheld vacuum from the wand.
3. Check all intake openings to the dust cup and remove any debris or blockages.



### Checking for Blockages in the Wand:

- |   |   |
|---|---|
| <b>Standard Wand:</b>   | <b>MULTIFLEX Wand:</b>  |
| 1. Turn off vacuum.   | 1. Turn off vacuum.   |
| 2. Remove the handheld vacuum and floor nozzle from the wand. | 2. Remove the handheld vacuum and floor nozzle from the wand.   |
| 3. Check intake openings for blockages and debris.            | 3. Check the <b>Clap Access</b> on the MULTIFLEX portion of the wand by pinching the tabs on both sides of the nose and lifting the hose out. |
| 4. Clear away debris and blockages.                           | 4. Clear any debris and blockages.  |



### Checking for Blockages in the Floor Nozzle:

1. Turn on vacuum.
2. Detach the wand.
3. Use one edge of a coin to open the three sides on the bottom of the floor nozzle.
4. Remove the cover and lift back the neck of the floor nozzle.
5. Check the opening and remove any debris.
6. Replace cover by firmly pressing down on all sides and turning the cover counterclockwise.

## TROUBLESHOOTING

**WARNING:** To reduce the risk of shock and unintended operation, turn off power and remove the Li-Ion battery before servicing.

Vacuum is not picking up debris. No suction or light suction. (Refer to **Checking for Blockages** section for more information.)

- Dust cup may be full; empty dust cup.
- Check floor nozzle for blockages; clear as needed if required.
- Remove any string, carpet fibers, or hair that may be wrapped around the brushroll.
- Check connection between handheld vacuum and wand for any debris or blockages if required.
- Check plug covers door in wand for any blockages and clear any debris.
- Check filters to see if they need cleaning. Follow instructions for rinsing and completely air-drying the filters before reinserting in the vacuum.

### Vacuum lifts area rugs.

- Take care when vacuuming area rugs or mats with delicate room décor.
- Turn off the unit to disengage the brushroll and restart with the power/selector switch.

### Brushroll does not spin.

- Immediately turn off the vacuum. Remove any blockages, then turn on the power and lift the handle and slide to engage the brushroll.
- If the floor nozzle has head lights and they are not illuminated, there is a connection issue between the handheld vacuum wand and nozzle. Try disconnecting and reattaching the pieces.

### Vacuum turns off on its own.

There are several possible reasons for the vacuum turning off on its own, including blockages, battery issues, and overheating. If vacuum turns off on its own, perform the following steps:

1. Check LED lights on the battery to see if it needs to be recharged. If recharging is not needed, turn off vacuum and remove the battery.
2. Fully disassemble clean filter(s) (See Emptying the Dust Cup and Cleaning the Filters section).
3. Check wand for debris and/or blockages, and inlet openings and remove any blockages.
4. Allow unit and battery to cool for at least 45 minutes until they return to room temperature.
5. Return battery to vacuum and restart with power/selector switch.

**Note:** If vacuum still does not operate properly, contact a service center.

### LED lights on Li-Ion Battery are flashing.

- Bottom 1 or 2 lights are flashing (Fig. A): Battery needs to be charged.
- Top and bottom 1 or 2 lights are flashing (Fig. B): Battery temperature is not optimal, so charging is temporarily paused. Leave battery plugged in and charging will resume soon.
- If top 2 or bottom 2 LED lights are flashing (Fig. C, Fig. D): Contact a service center.



## PLEASE READ CAREFULLY AND KEEP FOR FUTURE REFERENCE.

This Owner's Guide is designed to help you keep your vacuum running at peak performance.

### BATTERY REMOVAL AND DISPOSAL

This product uses a lithium-ion rechargeable and moveable battery. When the battery no longer holds a charge, it should be removed from the vacuum and recycled. **DO NOT** incinerate or compost the battery.

When your lithium-ion battery needs to be replaced, dispose of the used one in accordance with local ordinances or regulations. In some areas, it is illegal to place spent lithium-ion batteries in the trash or in a municipal solid waste stream. Return spent battery to an authorized recycling center or to retailer for recycling. Contact your local recycling center for information on where to drop off the spent battery.

The RBC® (Rechargeable Battery Recycling Corporation) seal on the lithium-ion battery indicates that the tools to recycle the battery at the end of its useful life have already been used by SharkNinja. However, it is illegal to place spent lithium-ion batteries in the trash or municipal and waste stream and the RBC program provides an environmentally conscious alternative.

RBC, in cooperation with SharkNinja and other battery users, has established programs in the United States and Canada to facilitate the collection of spent lithium-ion batteries. Help protect our environment and conserve natural resources by returning the spent lithium-ion battery to an authorized SharkNinja service center or to your local retailer for recycling. You may also contact your local recycling center for information on where to drop off the spent battery or call 1-800-RBC-2000.



## PLEASE READ CAREFULLY AND KEEP FOR FUTURE REFERENCE.

This Owner's Guide is designed to help you get a complete understanding of your new Shark® cord-free vacuum.

SharkNinja Operating LLC.

Illustrations may differ from actual product. We are constantly striving to improve our products, therefore the specifications contained herein are subject to change without notice.

For SharkNinja U.S. Patent information, visit [sharkninja.com/uspatents](http://sharkninja.com/uspatents)

©2019 SharkNinja Operating LLC. MULTIFLEX, ROCKET, and SHARK are registered trademarks of SharkNinja Operating LLC. RBC is a trademark of Rechargeable Battery Recycling Corporation.



PRINTED IN MEXICO  
OBPN: IZ160Series\_IB\_E\_F\_S\_MP\_Mv2\_190620  
SC: 08-28-2020\_TAB

Elbrd: Y.T.  
MODEL: IZ162H\_B

