



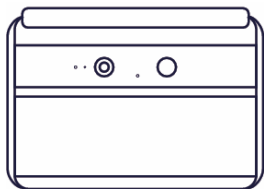
## **Kogan SmarterHome™ 3MP Outdoor Solar Security Camera with Floodlight**

KASMOTCMSLB

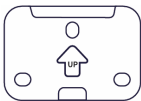
Components	3
Overview	4
Installation	6
Connect to SmarterHome™ App	11
Google Home	14
Amazon Alexa	17
Operation	21
Specifications	23
Notes	25

# Components

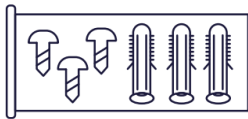
Lay all components out on a clean surface and ensure all parts are included. If any pieces are missing, check all packaging thoroughly, then contact **help.Kogan.com** for assistance.



Camera



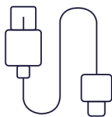
Mounting Bracket



Wall Mounting Hardware



Camera Retaining Screw

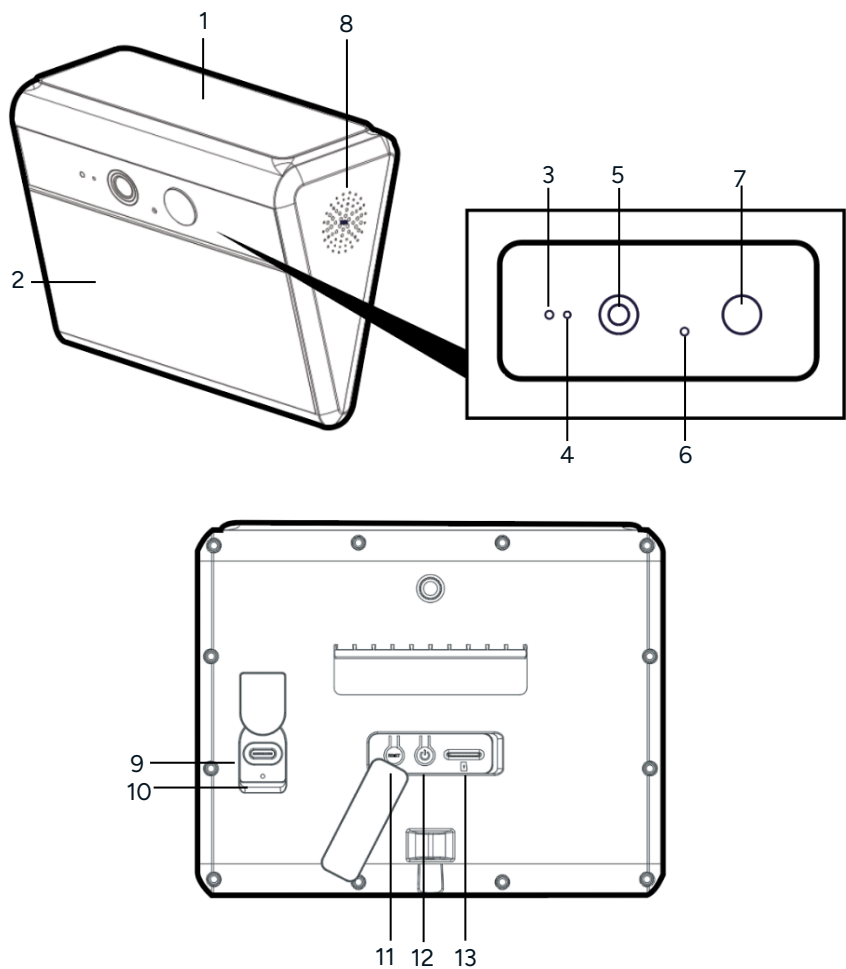


USB Charging Cable



User Guide

# Overview



- |   |                   |    |                    |
|---|-------------------|----|--------------------|
| 1 | Solar Panel       | 8  | Speaker            |
| 2 | Floodlight        | 9  | USB Charging Port  |
| 3 | Light Sensor      | 10 | Charging Indicator |
| 4 | Status Indicator  | 11 | Reset Button       |
| 5 | Camera Lens       | 12 | Power Button       |
| 6 | Microphone        | 13 | MicroSD Card Slot  |
| 7 | PIR Motion Sensor |    |                    |

## Indicators

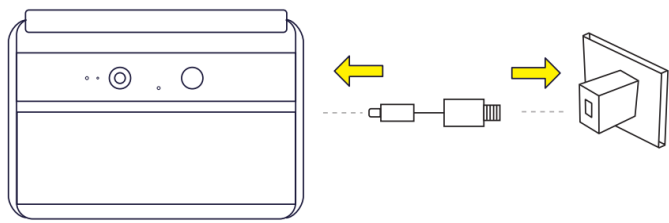
Status Indicator	Description
Slowly flashing red	Ready to connect (pairing mode)
Rapidly flashing red	Disconnected from the Wi-Fi network
Slowly flashing blue	Connected to the router successfully
Solid blue	The camera has been added successfully and is working normally
Flashing blue and red alternately	A firmware update is in progress

Charging Indicator	Description
Solid red	Battery is charging
Solid blue	Charging completed
Flashing indicator light	Charging failure, disconnect and reconnect charging cable.

# Installation

## Charging the Camera

Before mounting the camera, ensure it is fully charged. Use the supplied USB charging cable and connect it to a 5V 1A power adapter (not included). Allow the camera to charge completely before first use.



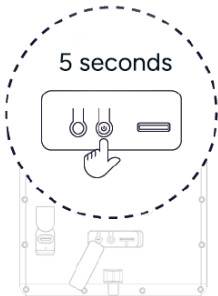
Charging Indicator	Description
Solid red	Battery is charging
Solid blue	Charging completed
Flashing indicator light	Charging failure, disconnect and reconnect charging cable.

**Note:**

The camera will continue to charge via the solar panel during normal use.

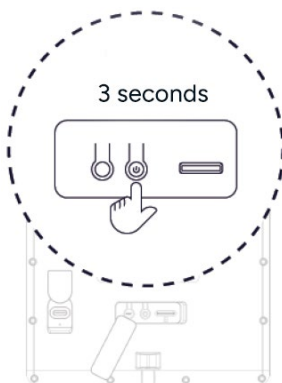
## Turning the Camera On/Off

- Press and hold the 'Power Button' for 5 seconds to turn the camera on.
- Press and hold the 'Power Button' for 5 seconds to turn the camera off.



## Pairing Mode

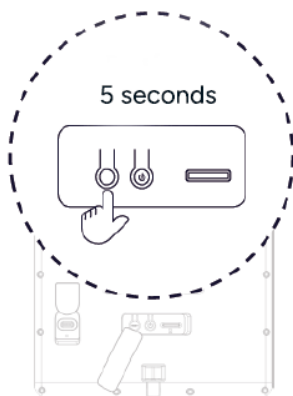
To place the camera in pairing mode, press and hold the 'Power Button' for 3 seconds until the indicator light behind flashing red and the voice prompt 'Waiting to receive the wireless configuration' is heard.



## Resetting the Wi-Fi Connection

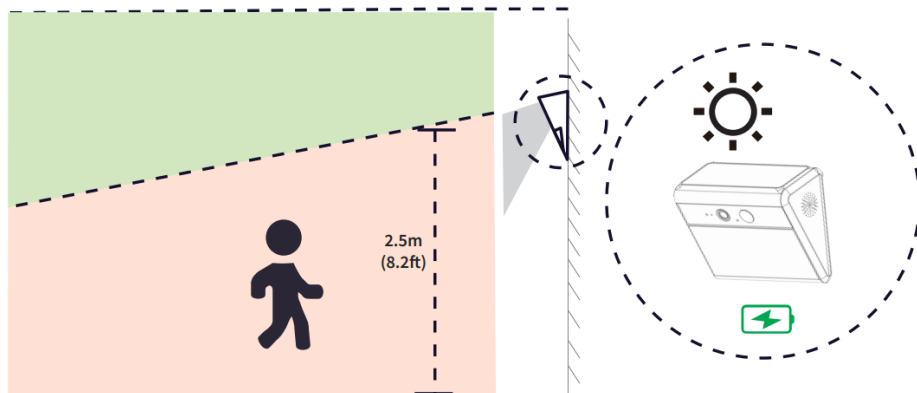
If the SSID of your Wi-Fi network has changed or you need to reconnect the camera:

1. Press and hold the 'Reset Button' for 5-6 second until the voice prompt 'Reset successfully' is heard.
2. The follow the steps in the 'Connecting to the SmarterHome App' section to reconnect the camera.



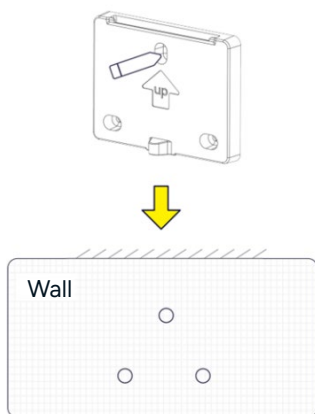
## Select a Location

- The camera should be mounted to a wall. Select a location that provides the desired camera view and allows the solar panel to receive direct sunlight.
- Ensure the location is within range of your home Wi-Fi network.
- For optimal performance, it is recommended to mount the camera approximately 2.5m (8.2ft) above the ground.



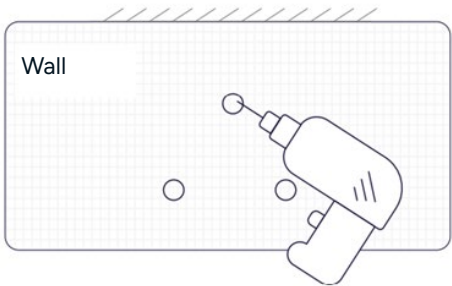
## Mount the Camera

1. Use the mounting bracket as a template to mark the 3 mounting points on the wall.

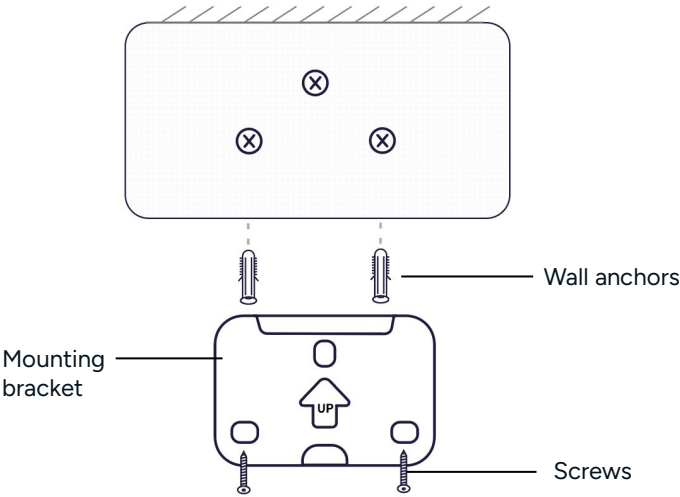




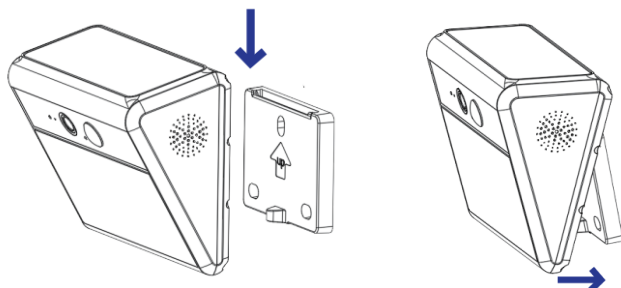
2. Drill 3 holes in the marked spots.



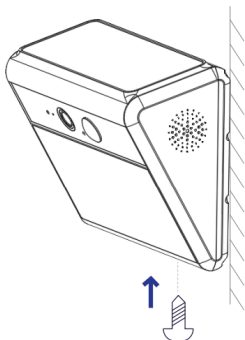
3. If mounting into concrete or masonry, insert the supplied wall anchors into the holes. Then secure the mounting bracket to the wall with using the supplied screws.



4. Align and slot the camera onto the mounting bracket. Press firmly to ensure it is securely attached.

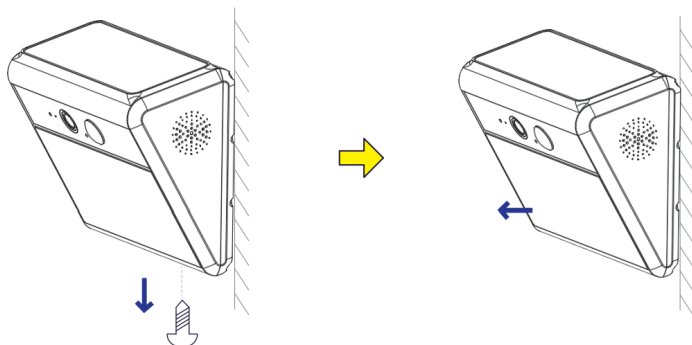


5. Insert and tighten the retaining screw at the bottom of the camera to secure it in place.



## How to Remove the Camera

Loosen the retaining screw at the bottom of the camera, then gently pull the camera away from the mounting base.



# Connect to the SmarterHome™ App

## Install the App

Download the Kogan SmarterHome™ app from the Apple App Store (iOS) or the Google Play Store (Android).



App Store (iOS)

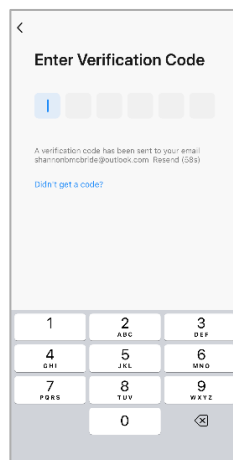
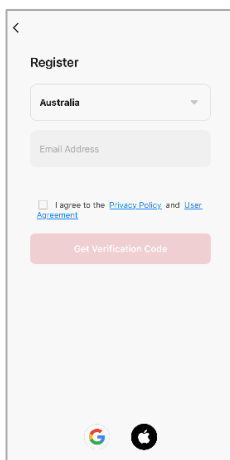
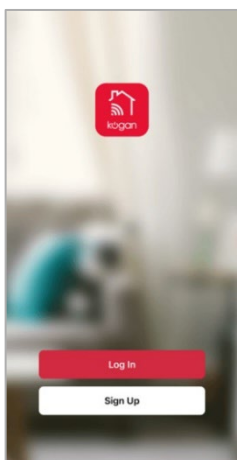


Play Store (Android)

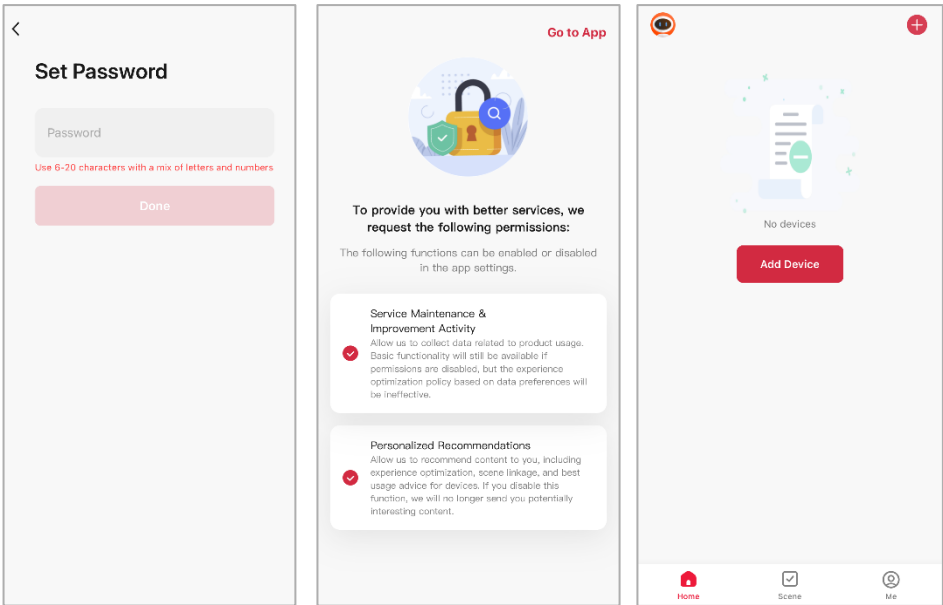


## Log In or Sign Up

1. If you already have a SmarterHome account, tap 'Log In'. To register a new account, tap 'Sign Up'.
2. The app will automatically recognise your country. If needed, you can manually select your country from the drop down menu. Enter your email address, agree to the Privacy Polics and User Agreement, and tap 'Get Verification Code' to continue.
3. A 6-digit code will be sent to the submitted email address. Enter the code before the one-minute timer expires.



- 4. Enter a password that uses 6-20 characters with a mix of letters and numbers and tap 'Done'.
- 5. Enable the permissions and tap 'Go to App'.



## Set the Device in Pairing Mode

When the device is first turned on, it may automatically enter pairing mode (the indicator is slowly flashing red).

If not automatically in pairing mode when powered on, you can manually set the device in pairing mode by pressing and holding the 'Power' button until the voice prompt 'Waiting to receive the wireless configuration' is heard and the indicator is slowly flashing red.

## Add the Device to the App

1. Open the SmarterHome™ app.
2. Tap the '+' icon in the top right corner of the screen and then tap 'Add Device'.
3. Tap 'Add' when the device appears. Alternatively, select the product type from the list of options in the app (Security > Cameras).
4. Follow the prompts to add your device to the app.

### Notes:

- The device and the app must use the same Wi-Fi network.
- The device is only compatible with 2.4Ghz networks.

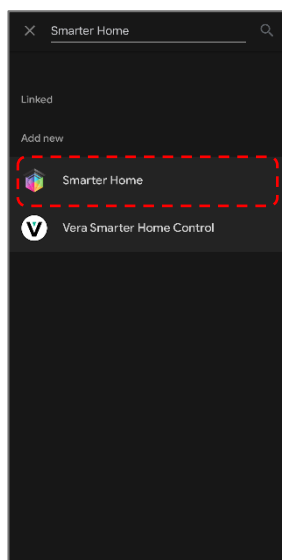
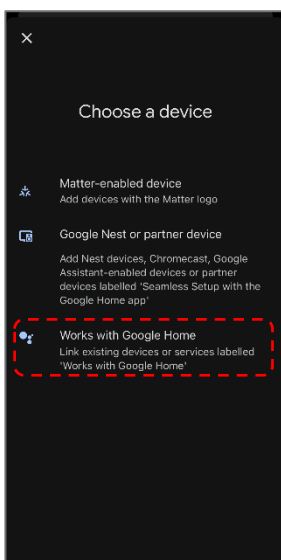
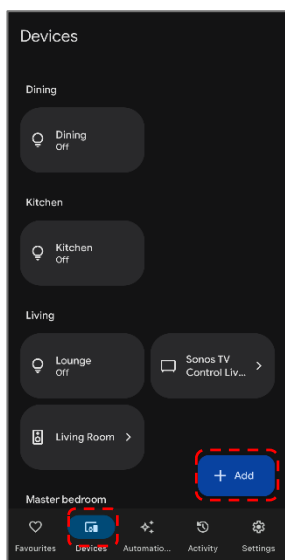
## Connectivity Support

Scan the QR code below or go to <https://help.kogan.com/s/article/Kogan-SmarterHome-App-Connectivity-Support> and follow the pairing instructions for EZ mode.

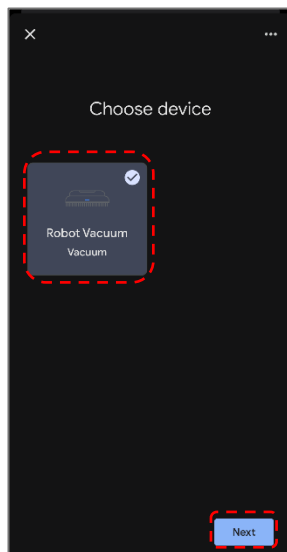
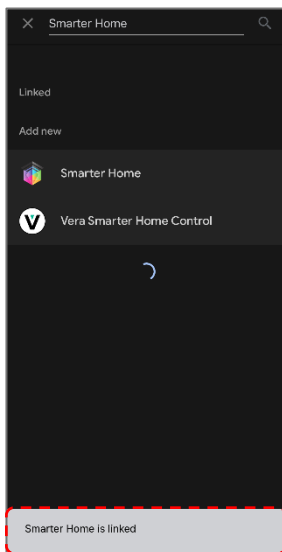
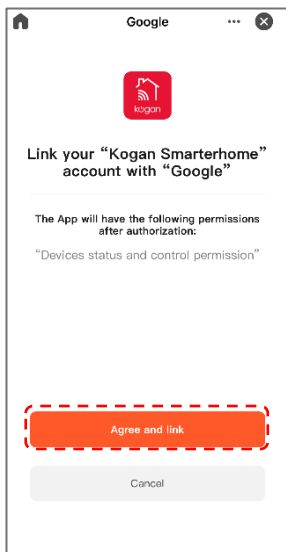


# Google Home

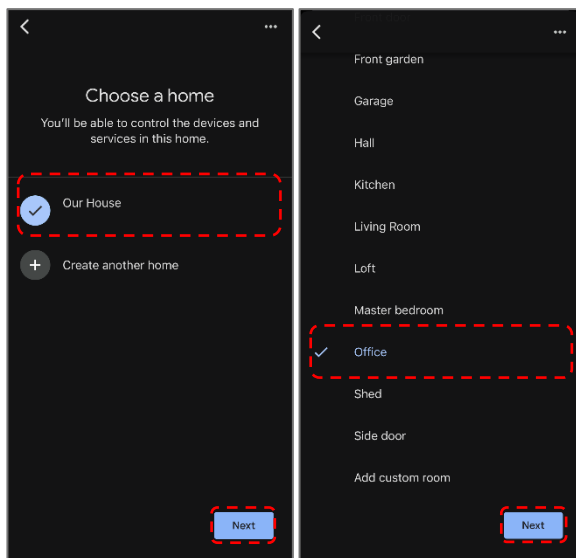
1. Ensure you are logged into the Kogan SmarterHome™ app.
2. Open the Google Home app.
3. Go to the devices tab and tap the '+ Add' button in the lower right corner.
4. Tap 'Works with Google Home'.
5. Search for 'Smarter Home' in the search bar and select 'Smarter Home' from the results.



6. Tap the 'Agree and link' button.
7. Search for 'Smarter Home' in the search bar and select 'Smarter Home' from the results.
8. Once linked, a 'Smarter Home is linked' pop-up will appear at the bottom of the screen.
9. Tap your device and then tap the 'Next' button.



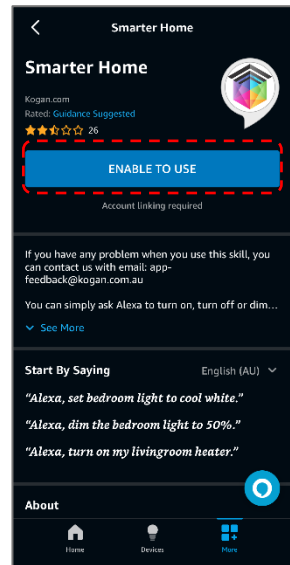
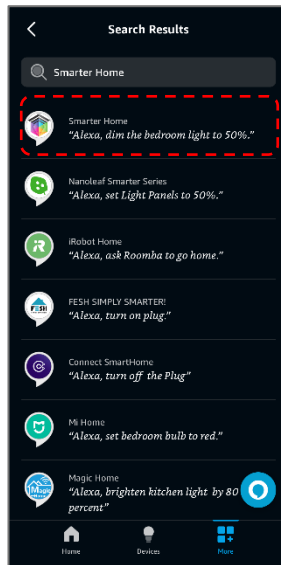
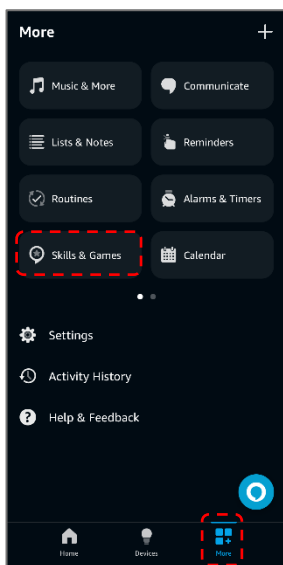
10. Select the home you wish to add the device to and tap the 'Next' button.
11. Select the room your device is in and tap the 'Next' button.



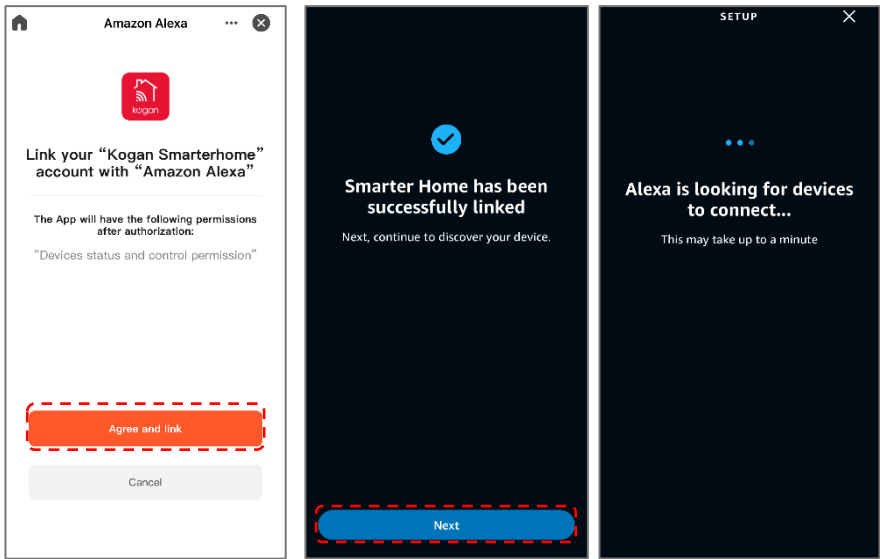


# Amazon Alexa

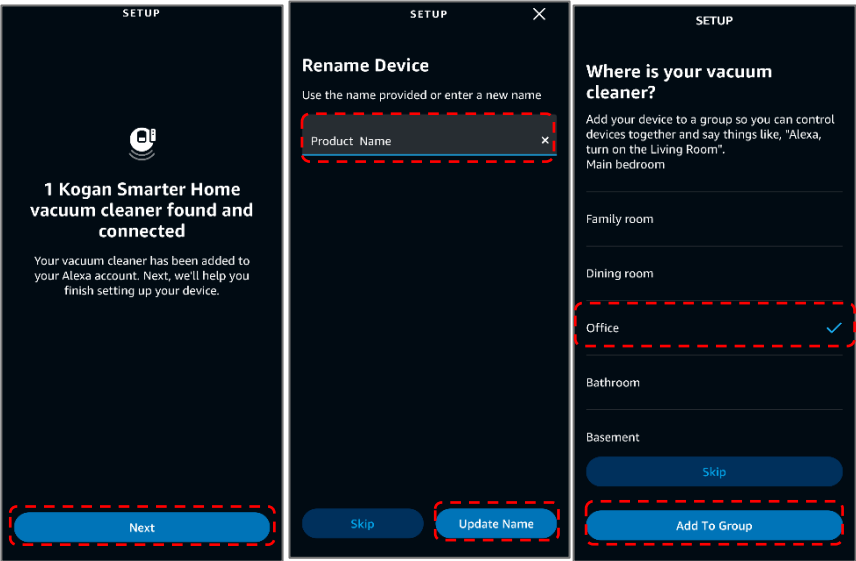
1. Ensure you are logged into the Kogan SmarterHome™ app.
2. Open the Amazon Alexa app.
3. Go to the 'More' tab and tap 'Skills & Games'.
4. Search for 'Smarter Home' in the search bar and select 'Smarter Home' from the results.
5. Tap the 'ENABLE TO USE' button.



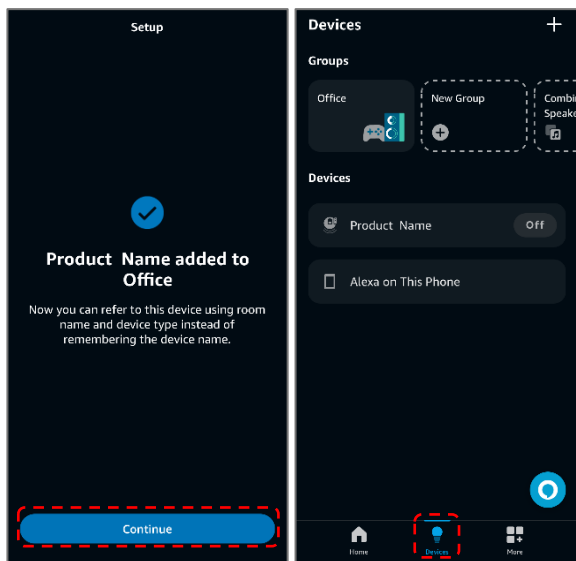
- 6. Tap the 'Agree and link' button.
- 7. Once linked, tap 'Next'. Alexa will search for any compatible devices.



- 8. Once your device has been found, tap 'Next'.
- 9. Rename the device to your desired name and tap 'Update Name'.
- 10. Select the room your device is in and tap 'Add To Group'

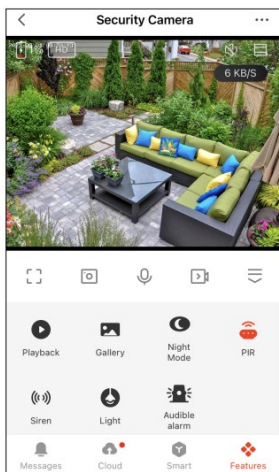


11. Once the device has been successfully added to your desired room, tap 'Continue'.
12. You can view and manage your device from the 'Devices' tab.



# Operation

In live view interface, click '...' to access the camera settings and additional functions.



## Two-way audio

You can see and hear the visitors from the camera in your SmarterHome™ app.

## Full Colour Vision

The use of white light ensures that pictures and videos captured during motion detection are presented in vivid colour, enhancing overall visibility for a more detailed and clear vision.

## PIR Motion Detection

- Built-in motion sensor detects movement, and the camera will send push notifications and app alerts.
- When someone passes by, an alarm will be triggered and sent to phone.

## Alerts

When the alarm is triggered at night, the camera will activate both sound and light notifications.

## Low Battery

- A low battery warning is triggered when the battery level reaches 20%. A shutdown warning is triggered when it reaches 5%.
- If the camera is not receiving enough sunlight to charge, you may need to fully charge it via USB before resuming operation. Consider adjusting the solar panel to receive more direct sunlight.

## Spotlight Control Modes

The spotlight can be controlled through the SmarterHome app. Two lighting modes are available:

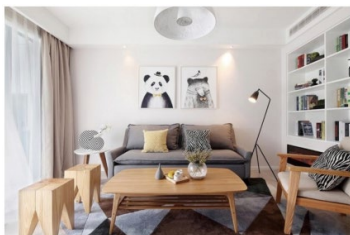
- **Manual Control:** Turn the spotlight on manually via the app and adjust the brightness as needed.
- **Night Vision Mode:** The spotlight will automatically turn on when motion is detected in low light conditions.

## Record

Use an SD card to keep recording for every moment.

## Day & Night

Never miss a moment, even in complete darkness, with powerful night-vision technology.



### Note:

The PIR motion sensor will occasionally false trigger depending on the camera's environment. This is completely normal and not an indication of improper operation or product fault.

# Specifications

Dimensions	166x133x75mm
Net Weight	540g
Charging Cable	0.5m
Ingress Protection (IP)	IP65
Working Temperature	-20-50°C (no charge below 0°)
Working Humidity	20-85% (no condensation)
<b>Hardware</b>	
Image Sensor	1/2.7" 3 Megapixel progressive CMOS
Flash Chipset	16MB NOR Flash
Focal Length & Aperture	3.5mm @F2.0
FOV (H / V /D)	H 100° / V 52° / D 122°
<b>Electrical</b>	
Power Input	Battery, DC 5V1A (USB-C)
Working Power Consumption	1900mA average (Floodlight ON)
Standby Power Consumption	500-900uA (the value changed according with Network environment)
Live Stream Video Resolution	HD (2304 x 1296) / SD (640 x 360)
Notification Image Resolution	SD (640*360)
Microphone	-38dB
Noise Reduction	3D NR
Audio Input	Built in Mic
Audio Output	Built in 8Ω1W Speaker
Audio Compression	G711A
Video Compression	H.264
Frame Rate	20fps
Bit Rate	Main Stream: 1Mbps / Sub Stream: 384Kbps

## **Lighting**

IR Distance	5-8m
Number of IR Lamp Beads	6 pcs
Number of White LED Beads	72 pcs
White Light Colour Temperature	4300K ~ 4700K
White Light Colour Rendering Index	N/A
White Light Luminous Flux	200lm
White Light Lighting Angle	120°

## **Network and Condition**

Wireless Standard	IEEE 802.11 b/g/n
Wireless Frequency	2.4GHz
Wireless Communication Protocols	WPA/WPA2, WPA-PSK/WPA2-PSK, WPA3
Wireless Encryption Protocol	HTTP, DHCP, DNS, TCP/IP

## **Basic Specification**

Night Vision Mode	Infrared mode & Full colour mode
Local Storage SD Slot	Micro SD Slot (up to 256GB)

## **Battery**

Battery	18650 Lithium battery pack
Battery Capacity	3.65V 5200mAh (2600mAh*2)
Battery Life	2.5-3 Months (without charging, approx. 20 triggers per day)
Solar Panel Dimension	12x17.5cm
Solar Panel Output Power	Max 1.5W
Solar Panel Energy Conversion Rate	≥22%



[illegible]

[illegible]

[illegible]

### **Need more information?**

We hope that this user guide has given you the assistance needed for a simple set-up.

For the most up-to-date guide for your product, as well as any additional assistance you may require, head online to **help.Kogan.com**.

