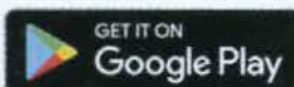
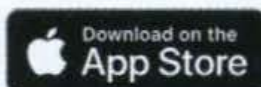


QUICK SETUP

WiZ

1

DOWNLOAD FREE WIZ APP



Search for "WiZ Connected"

2

INSTALL AND PAIR LIGHT OR DEVICE



Follow the on-screen steps in the app to complete setup.

3

ENJOY BEING CONNECTED



Share with family and friends.

Need help? Get in touch through our in-app chat support.

WiZ



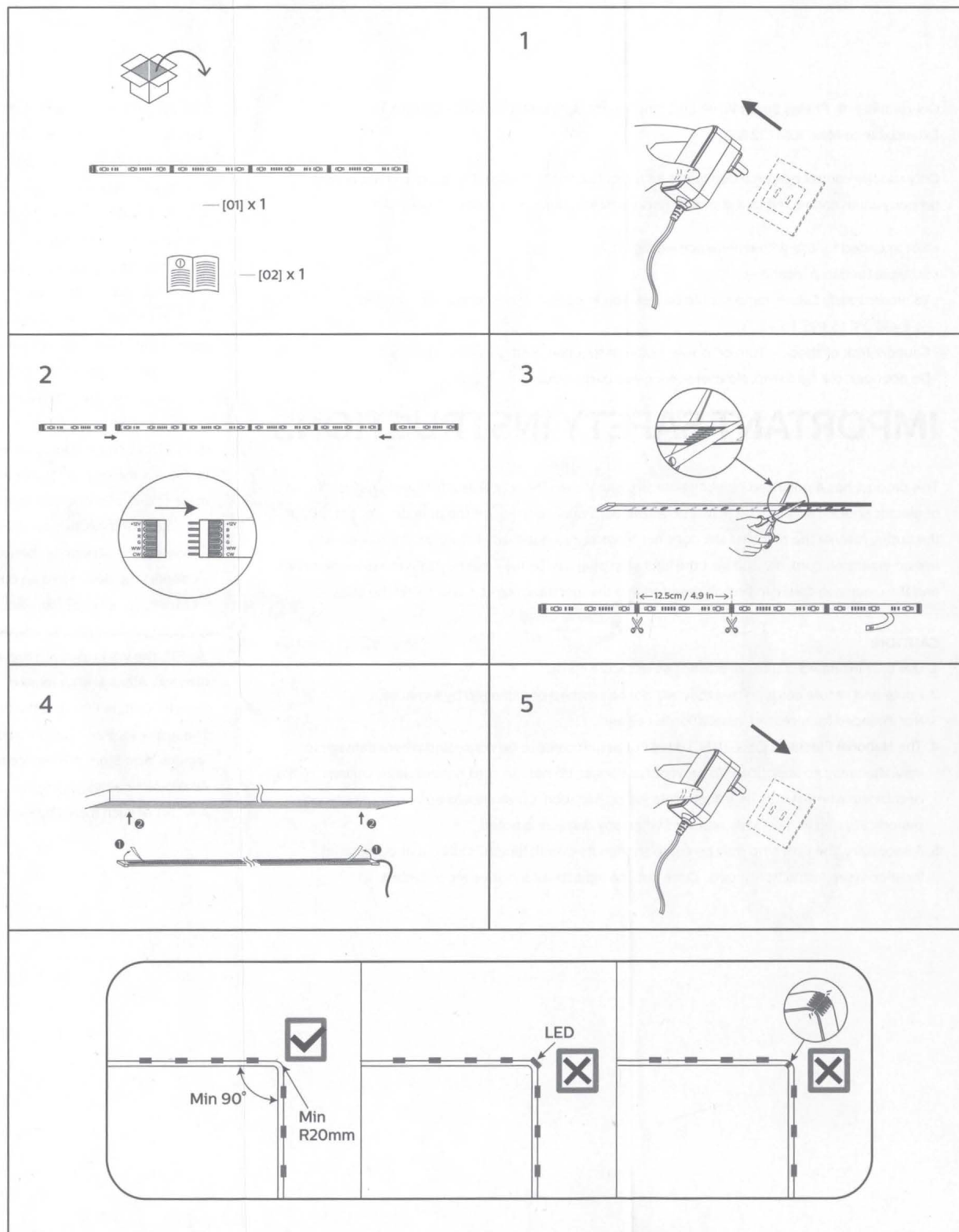
Wi-Fi LED strip 1m / 3.3 ft

800lm extension US

9290025321

3241 656 81281

? → wizconnected.com



Only works with Philips Smart Wi-Fi LED strip 2m starter kit (Model: 9290025266).
Extendable to Max. 10M (32.8FT).

Only use the control box provided in this kit to control this light strip. This lamp will not operate properly when connected to a standard (incandescent) dimmer or dimming control device.

- Not intended for use with emergency exit lights.
- Suitable for damp locations.
- To prevent early failure, lamp should be installed in operating environment ranging from -4°F / -20°C to +95°F / +35°C.
- Caution: Risk of shock – Turn off power before inspection, installation or removal.
Do not open the light strip. No user serviceable parts inside.

IMPORTANT SAFETY INSTRUCTIONS

This product has a polarized plug (one blade is wider than the other) as a feature to reduce the risk of electric shock. This plug will fit in a polarized outlet only one way. If the plug does not fit fully in the outlet, reverse the plug. If it still does not fit, contact a qualified electrician. If it is necessary to use an extension cord, only do so if the light strip plug can be fully inserted into the extension cord, and the extension cord can be fully inserted into the electrical outlet. Do not alter the plug.

CAUTION:

1. Use only insulated staples or plastic ties to secure cords.
2. Route and secure cords so that they will not be pinched or damaged by furniture.
3. Not intended for recessed installation in ceilings.
4. The National Electrical Code (NEC) does not permit cords to be concealed where damage to insulation may go unnoticed. To prevent fire danger, do not run cord behind walls, ceilings, soffits, or cabinets where it may be inaccessible for examination. Cords should be visually examined periodically and immediately replaced when any damage is noted.
5. If necessary, the light strip may be cut to shorten its overall length. Only cut at designated locations (see instruction sheet). Once cut, the light strip cannot be reconnected.

This device complies with Part15 of the FCC Rules and Industry Canada licence-exempt RSS standard(s). Operation is subject to the following two conditions: (1) This device may not cause harmful interference, and (2) This device must accept any interference received, including interference that may cause undesired operation.

CAN ICES-005 (B) / NMB-005(B)

Changes or modifications not expressly approved by the party responsible for compliance could void the user's authority to operate the equipment.

This device has been tested and found to comply with the limits for a Class B digital device pursuant to Part 15 of the FCC Rules. These limits are designed to provide reasonable protection against harmful interference in a residential installation. This device generates, uses, and can radiate radio frequency energy and, if not installed and used in accordance with the instructions, may cause harmful interference to radio communications.

However, there is no guarantee that interference will not occur in a particular installation. If this device does cause harmful interference to radio or television reception, which can be determined by turning the device off and on, the user is encouraged to try to correct the interference by one or more of the following measures:

- Reorient or relocate the receiving antenna
- Increase the separation between the device and receiver
- Connect the device into an outlet on a circuit different from that to which the receiver is connected
- Consult the dealer or an experienced radio/television technician for help.

Wi-Fi®, the Wi-Fi logo are registered trademarks of Wi-Fi Alliance.

Amazon, Alexa and all related logos are trademarks of Amazon.com Inc or its affiliates.

Google, Google Play and the Google Play logo are trademarks of Google LLC.

The Apple logo and Siri are trademarks of Apple Inc., registered in the U.S. and other countries and regions. App Store is a service mark of Apple Inc.

All product names, logos, brands and trademarks are property of their respective owners.

Any use of such marks by Signify is under license.