



OLLIE QD

Dedicated for the OM System OM1 & OM1 ii

Instruction Manual

IMPORTANT

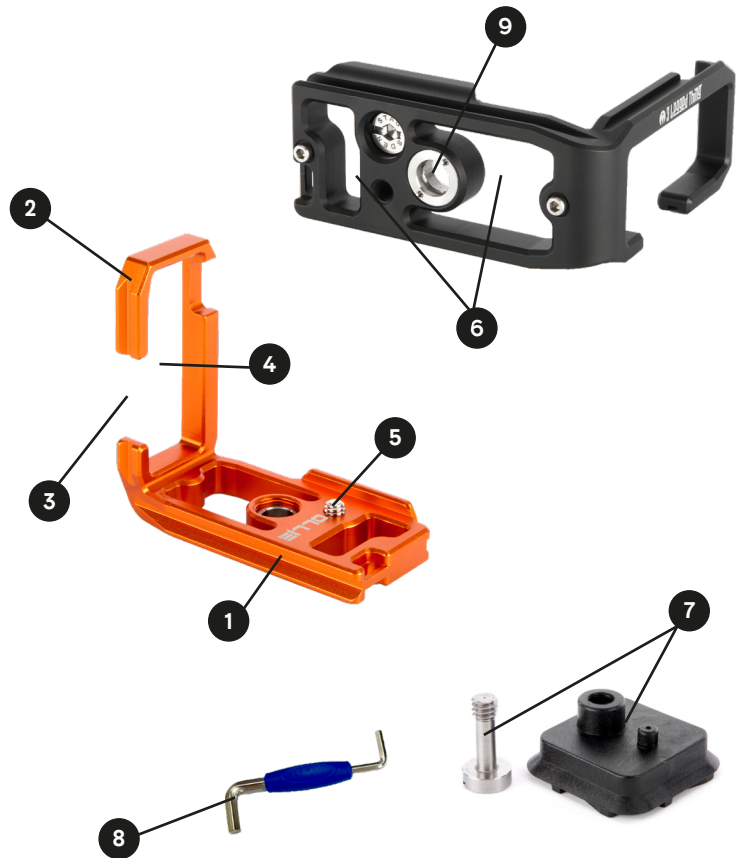
DO NOT USE YOUR L-BRACKET UNTIL YOU HAVE READ THESE INSTRUCTIONS. NO WARRANTY CLAIM WILL BE ENTERED INTO FOR THE MISUSE OR INCORRECT USE OF THESE PRODUCTS.

Look at your box.
See that little sticker with a serial number and a barcode? Peel it off and put it here for safe keeping.

Or don't.

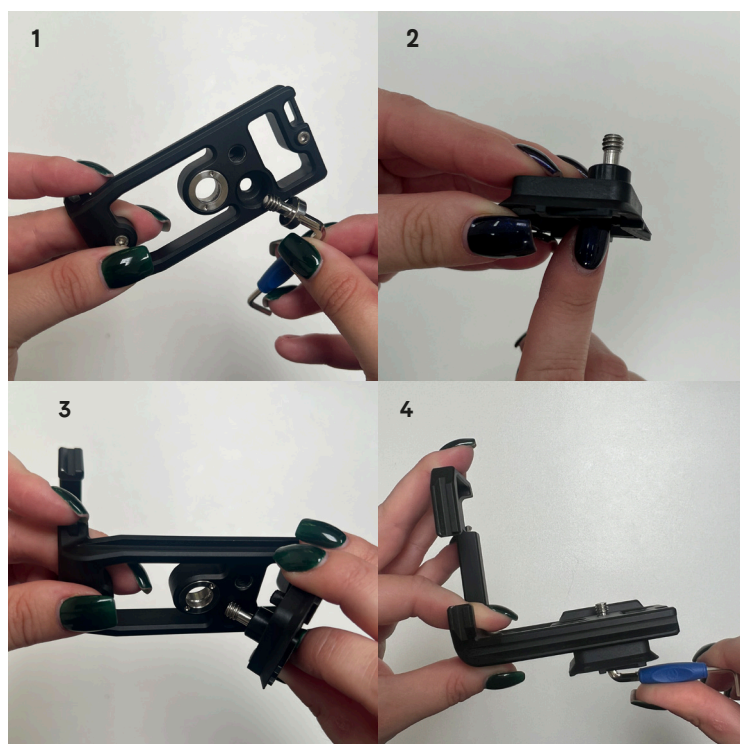
Anatomy of Ollie QD

- 1 Base Plate
- 2 Upright
- 3 Cut-out for screen
- 4 Open aspect for cable access
- 5 1/4"-20 stainless steel mounting screw
- 6 Weight-saving cut out in base
- 7 Peak Design Capture v3 Adapter Plate with longer 1/4"-20 screw
- 8 Toolz Multi Tool
- 9 QD Socket - Only for QD accessories



Attachment of PD adapter plate

To fit the Peak Design Capture v3 adapter plate to the bracket, simply remove the 1/4"-20 from the camera (1), slot in the longer 1/4"-20 screw through the PD plate (2) and line-up the small pin hole with the 1/4"-20 thread (3). The PD plate will simply slot into place and then you can tighten this onto your camera (4).



Warranty Information

Your 3LT product comes with a 5 Year Global Warranty. On the box you will find a sticker with a unique serial number and QR code. Use this serial number to register your products at www.3leggedthing.com/register

Details of your warranty can be found at www.3leggedthing.com/faq
Your warranty covers 3 Legged Thing products only.

If you have a question or suspect you have a fault, contact us first at www.3leggedthing.com/support

3LT Social Media

#3LeggedThing

/3leggedthing

@3leggedthing



Unit 2A Kinsbourne Farm

Bury End

Stagsden

Bedfordshire

MK43 8TS

United Kingdom of Fadeless Splendour