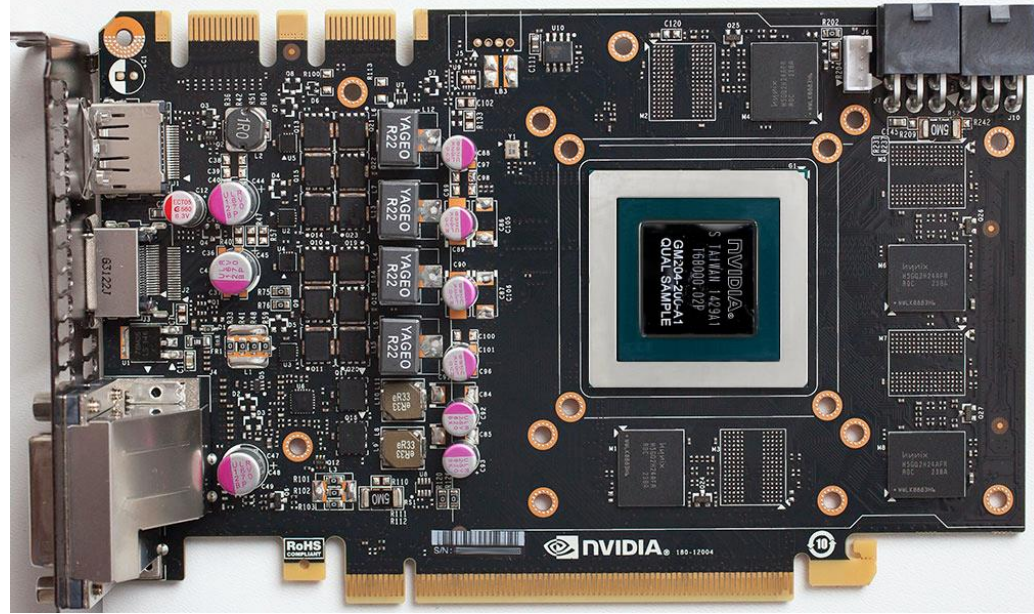


# Installation and mounting manual for EK-FC970 GTX Backplate

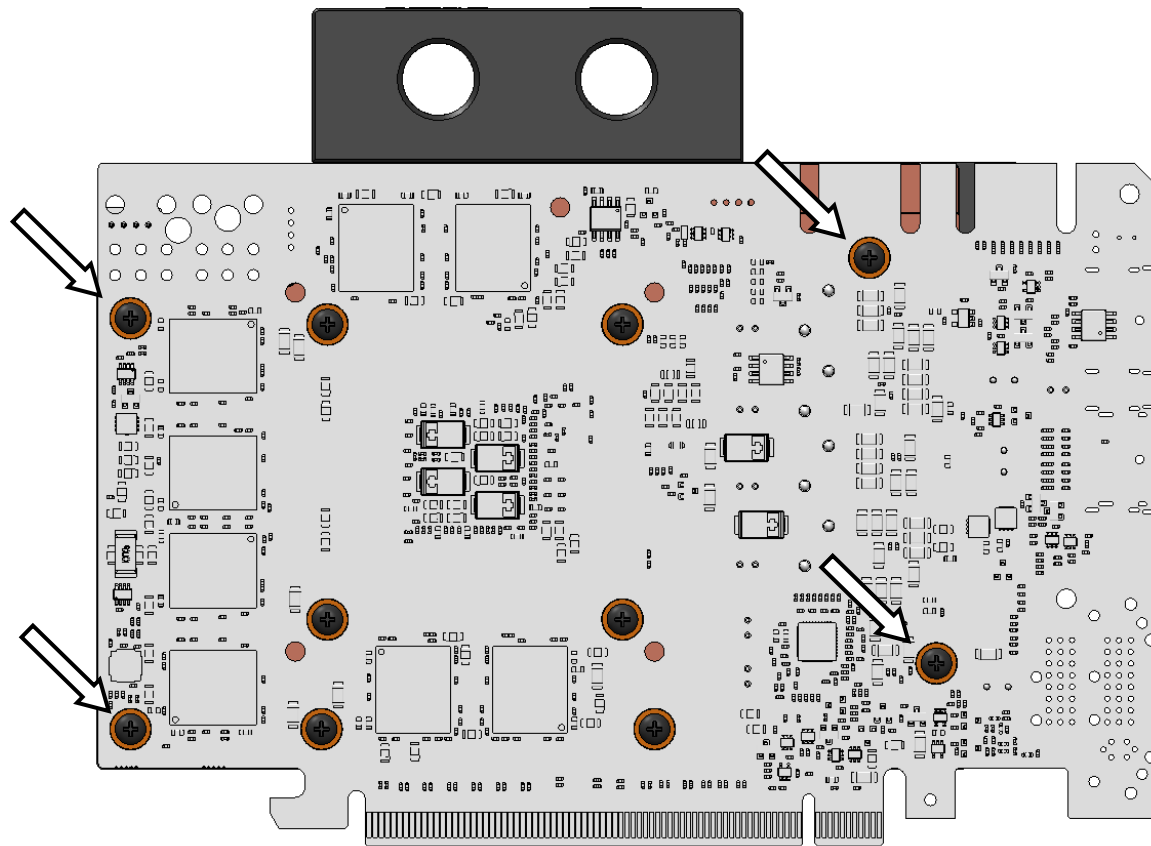
This product is intended for installation only by expert users. Please consult with a qualified technician for installation. Improper installation may result in damage to your equipment. EK Water Blocks assumes no liability whatsoever, expressed or implied, for the use of these products, nor their installation. The following instructions are subject to change without notice. Please visit our web site at [www.ekwb.com](http://www.ekwb.com) for updates. Before installation of this product please read important notice, disclosure and warranty conditions printed on the back of the box.

## STEP 1: GENERAL INFORMATION. Sample picture of nVidia GeForce GTX 970 graphics card.



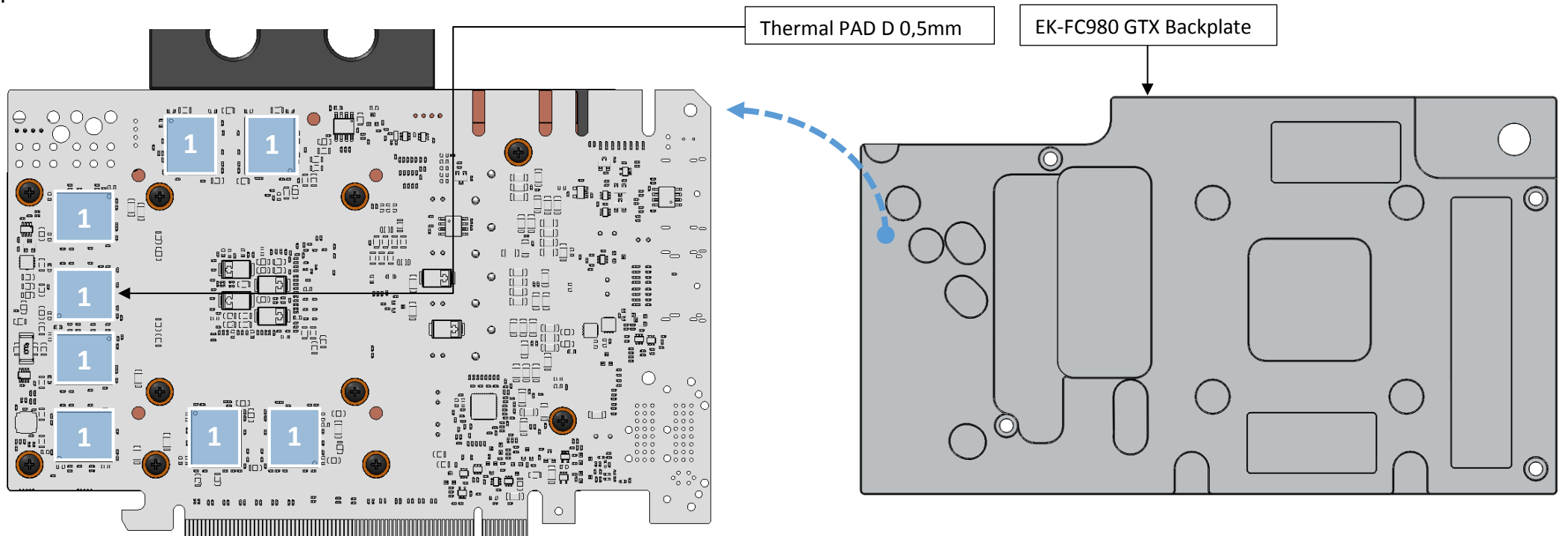
## STEP 2: PREPARING YOUR GRAPHICS CARD

EK-FC970 GTX Backplate is very easy to install. First install EK-FC970 GTX water block according to its manual. If you have it already installed the water block please check the picture below to see which mounting screws are to be left in their position and which are to be removed. Please remove the four (4) encircled screws.



## STEP 3: APPLYING THE THERMAL PADS

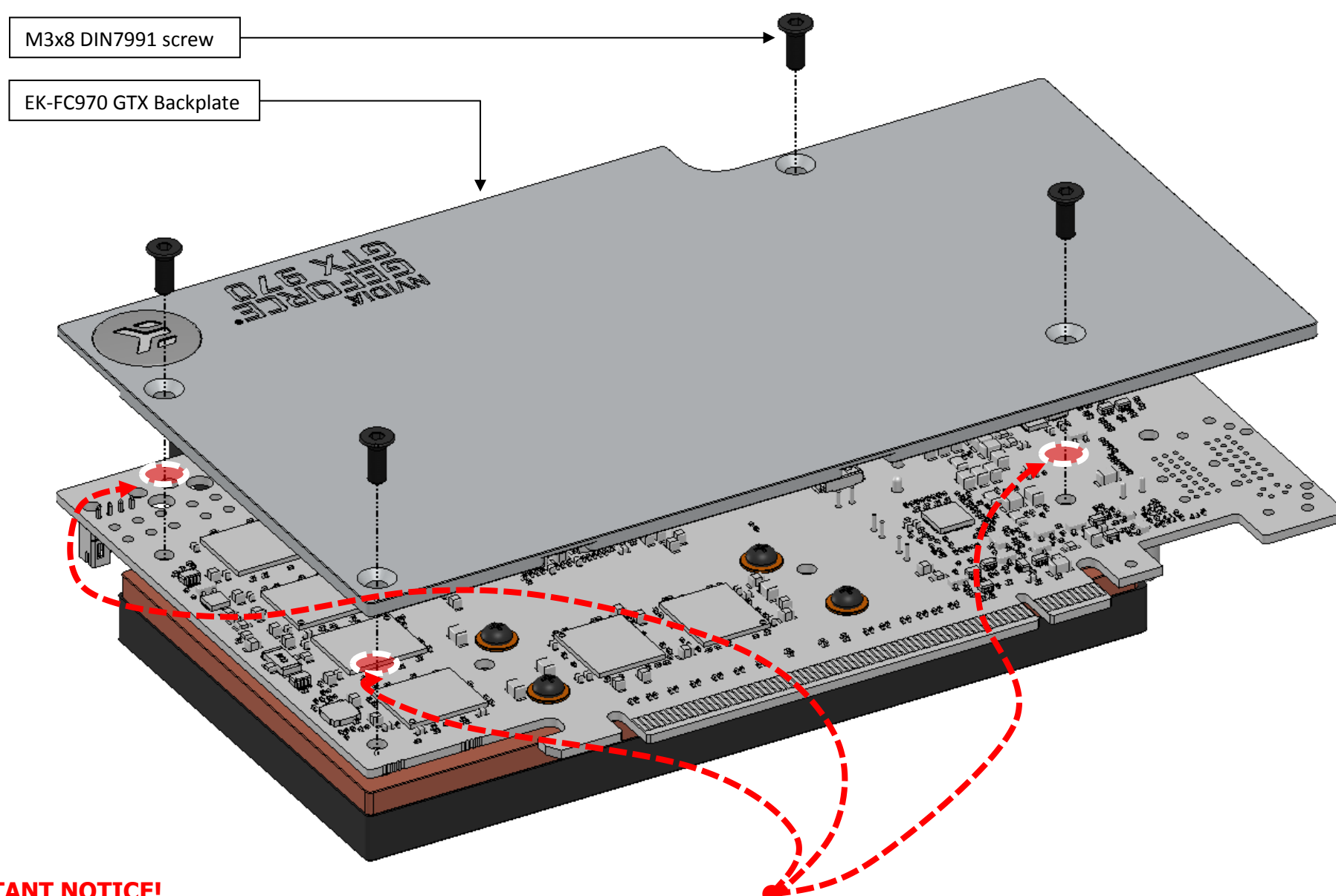
EK-FC980 GTX Backplate features passive cooling of the printed circuit board and its components therefore it is mandatory to install the enclosed thermal pad. Please install enclosed 0.5mm thick thermal pad (Thermal Pad D – 0,5mm (RAM 8X)) on each memory IC (if present) as shown on the picture below.



#### STEP 4: ATTACHING EK-FC980 GTX BACKPLATE TO THE GRAPHICS CARD

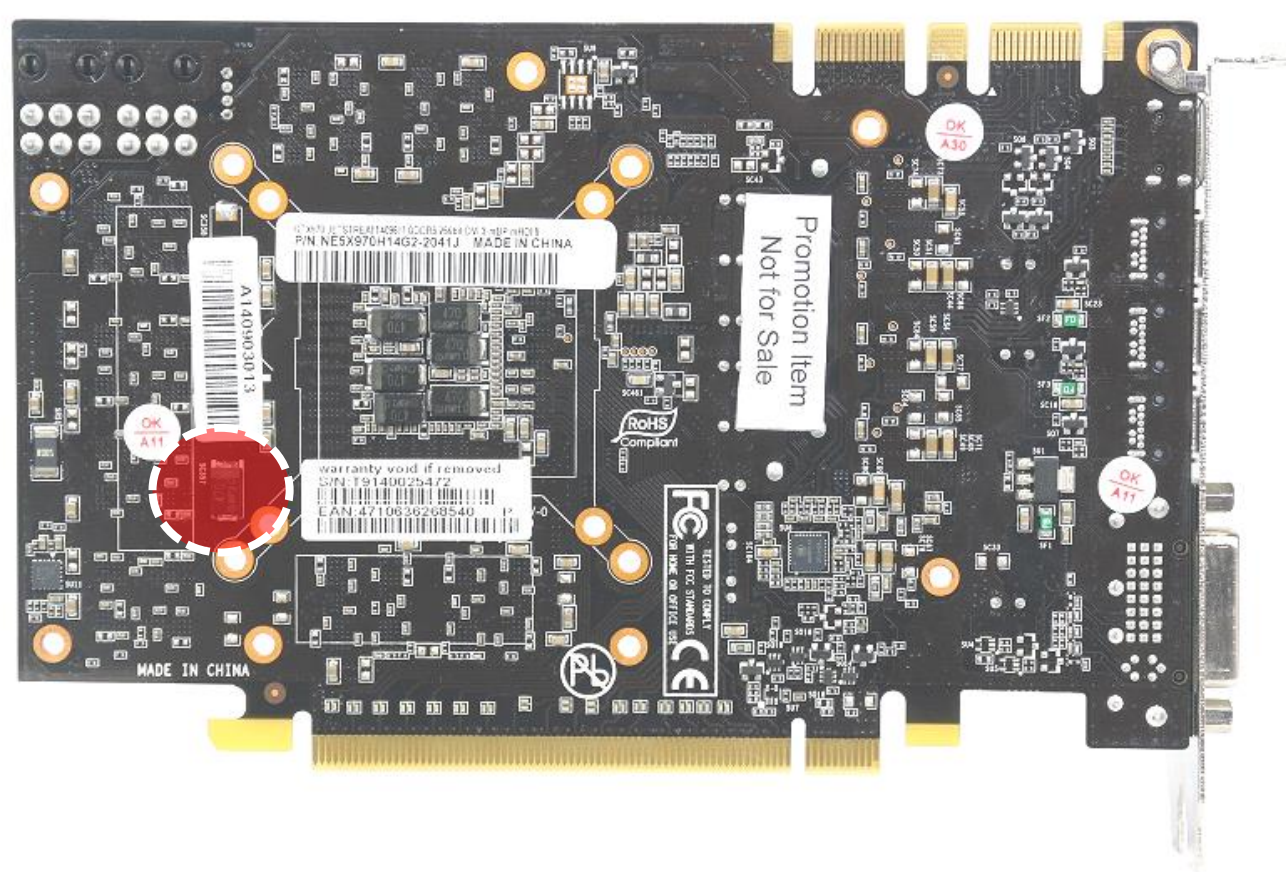
Take enclosed mounting screws and install them as shown on picture below. EKWB recommends users to start with four (4) M3x8 DIN 7991 (HINT: do not tighten screws until they are all positioned in their mounting holes) in the middle of the card and then continue outwards. The backplate has milled in standoffs, so there is no fear of over tightening of the screws. Nevertheless do not exaggerate with screwing force as there is no need for it. Please use the enclosed Allen Key 2mm to tighten the screws.

(By all means users must also consider that this product is intended to be used only with EK-FC970 GTX series water blocks. No other 3<sup>rd</sup> party heat sinks or coolers are supported!)



#### IMPORTANT NOTICE!

For Palit / Gainward- and other non-reference circuit board design – please use **0.5mm PVC washers** underneath each backplate standoff to prevent backplate collision with tantalum capacitors or other circuit board components. When using 0.5mm washers it is **mandatory to use 1mm thermal pad** on memory IC (if present) instead of 0.5mm (as shown in STEP 3).



#### REQUIRED TOOLS AND MOUNTING SCREWS: