

# STEELGREEN<sup>TM</sup>

## MANUFACTURING

### INSTRUCTION MANUAL

#### 35 GALLON TANK ATTACHMENT

**Models:** SG46, & SG52



## 35 GALLON INSTALL INSTRUCTIONS

### STEP 1:

- Disconnect the battery, *ground* first and then *power* wire.
- Remove the battery from the battery box.

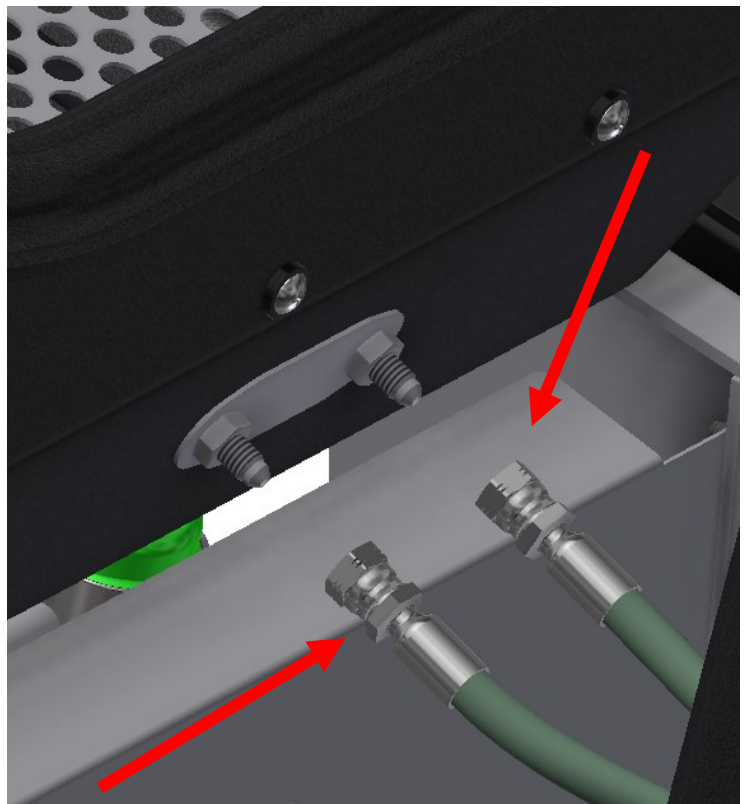


GROUND

POWER

**STEP 2:** Disconnect the hoses from the hopper.

**NOTE:** Hold the hoses up to prevent oil spillage

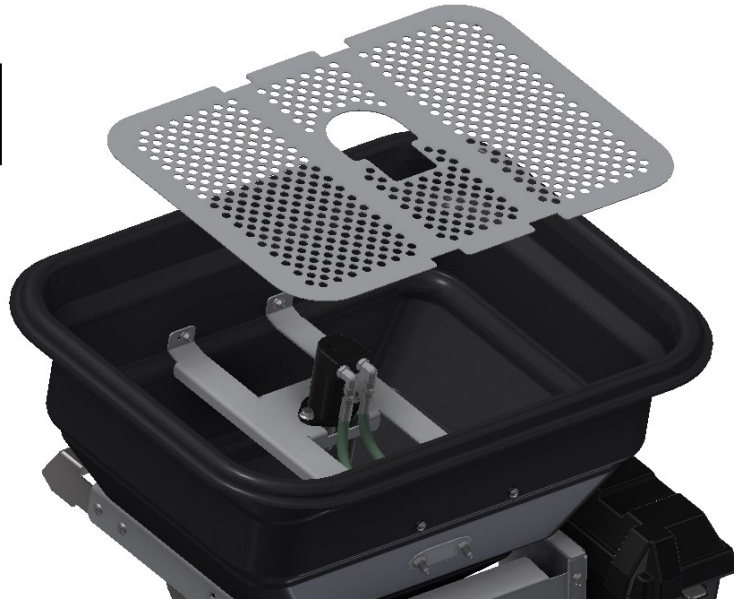


## 35 GALLON INSTALL INSTRUCTIONS

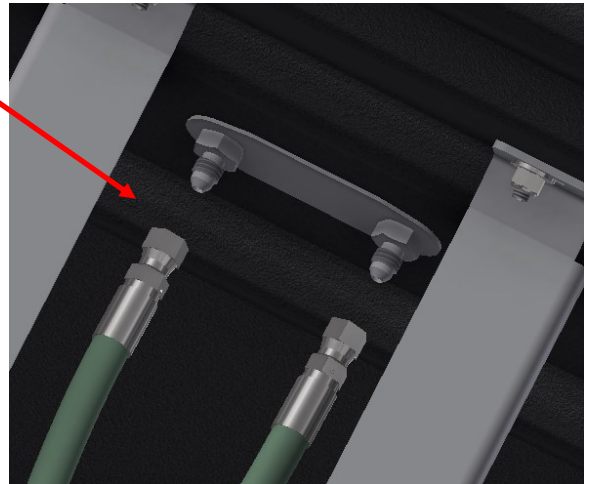
### STEP 3: QUICK CONNECT INSTALL

**NOTE:** *Be sure the hopper is drained before starting the following steps.*

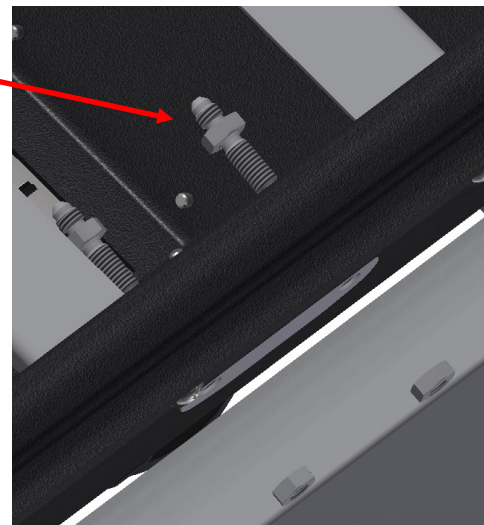
- Remove the grate.



- Disconnect the hopper motor hoses from the bulkhead fittings.



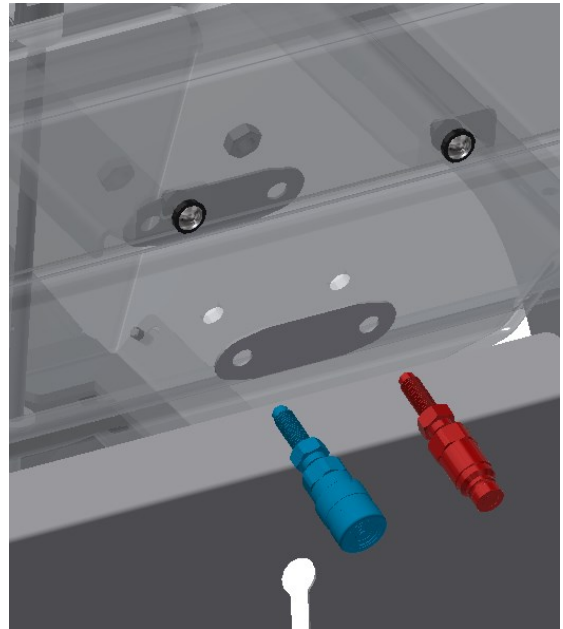
- Remove the bulkhead fittings from the hopper.



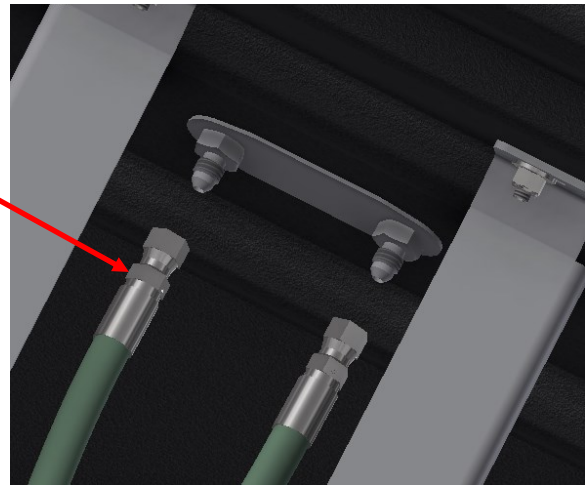
## 35 GALLON INSTALL INSTRUCTIONS

- Attach the quick couplers provided with the kit to the hopper.

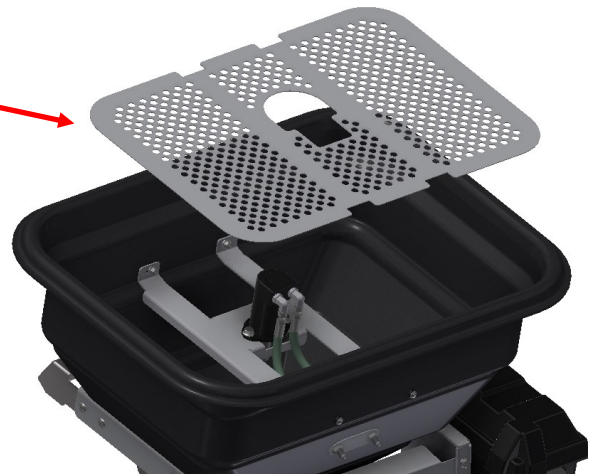
**NOTE:** Be sure the FEMALE quick connect is on the LEFT SIDE (SHOWN BLUE) and the MALE quick connect is on the RIGHT SIDE (SHOWN RED).



- Reconnect the hopper motor hoses.

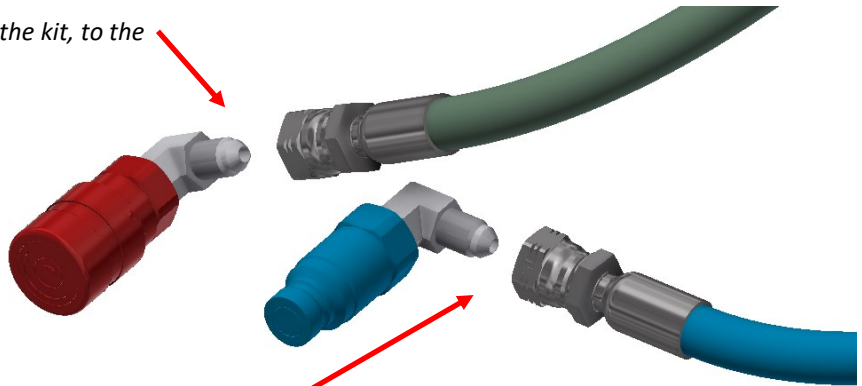


- Reinstall the grate.



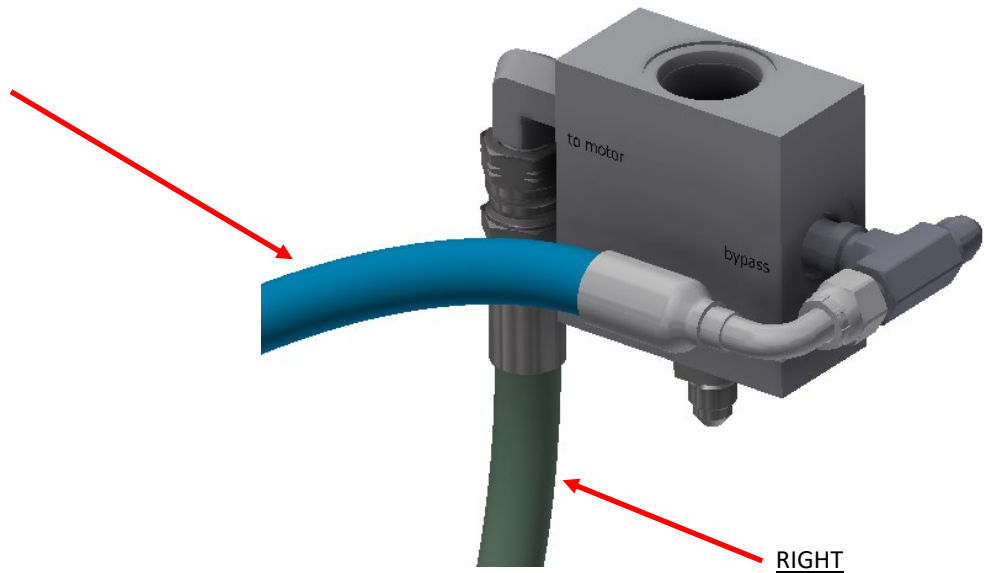
## 35 GALLON INSTALL INSTRUCTIONS

- Connect the *FEMALE* end *provided with the kit*, to the end of the *RIGHT SIDE* hose.



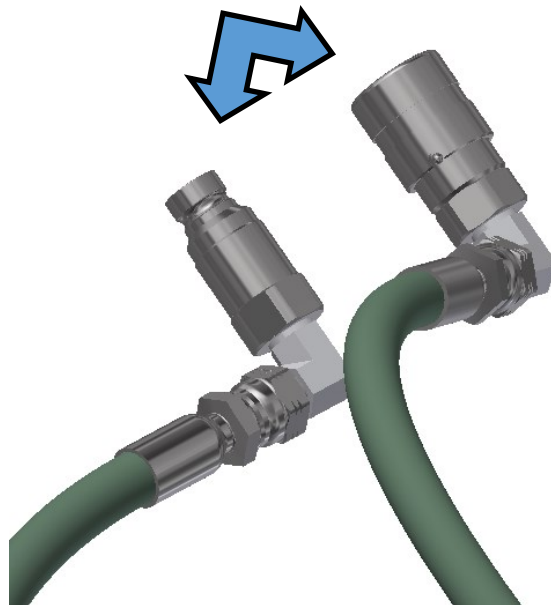
- Connect the *MALE* end *provided with the kit*, to the end of the *LEFT SIDE* hose.

LEFT



RIGHT

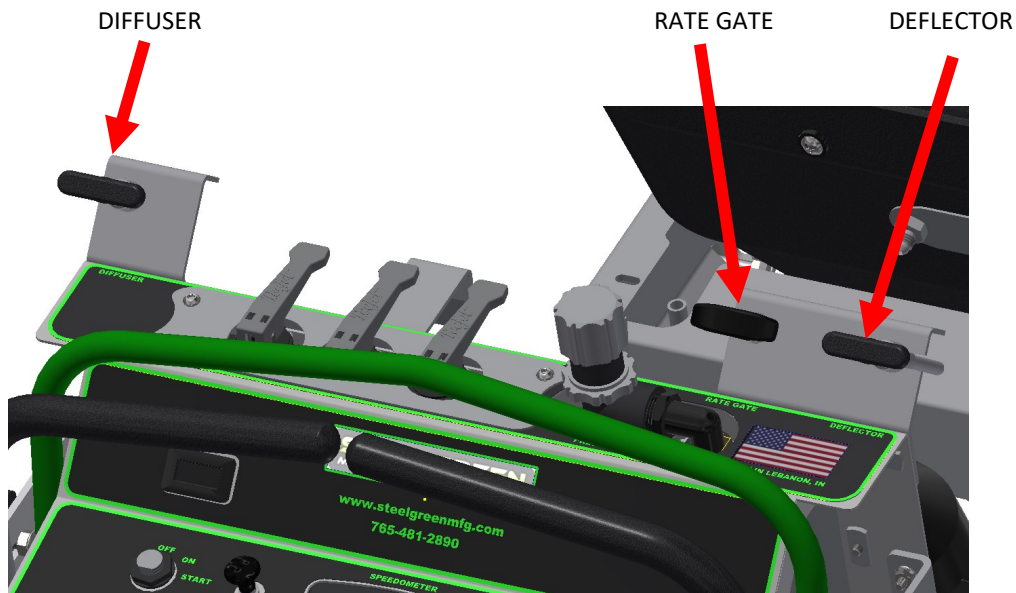
- Once the qd's have been attached, connect the hoses together to create hydraulic loop.





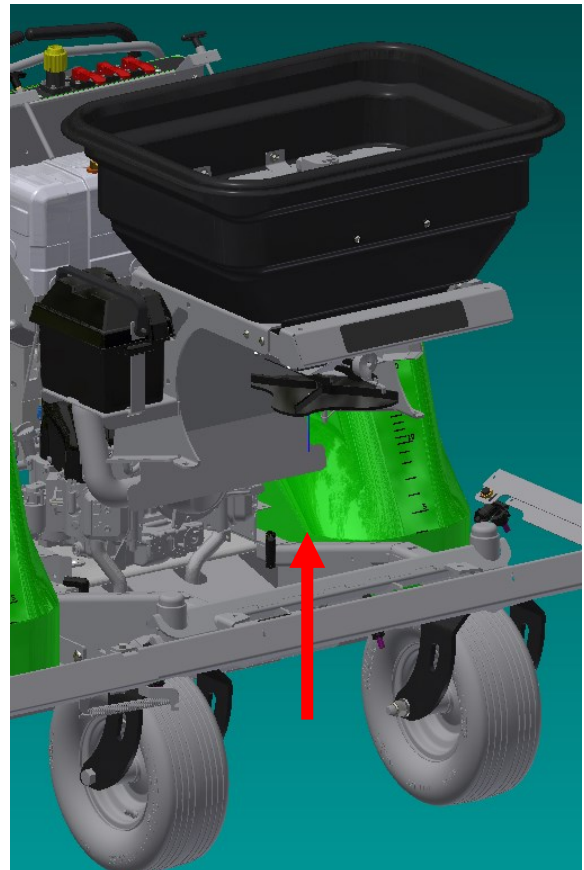
## 35 GALLON INSTALL INSTRUCTIONS

**STEP 4:** Disconnect the cables from the dash.



**NOTE:** Be sure the hopper is empty before proceeding.

**STEP 5:** Remove the six bolts that hold the hopper assembly to the frame and lift the hopper assembly from the frame.



## 35 GALLON INSTALL INSTRUCTIONS

### STEP 6:

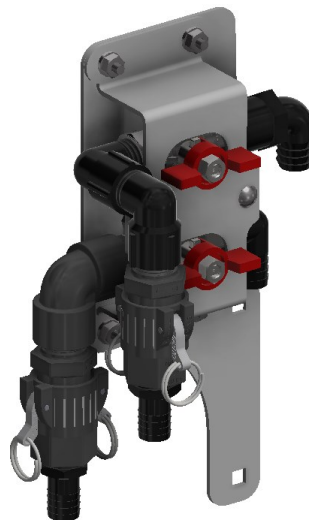
- Set the 35 gallon tank assembly on the frame.
- Attach it to the frame with the six bolts.



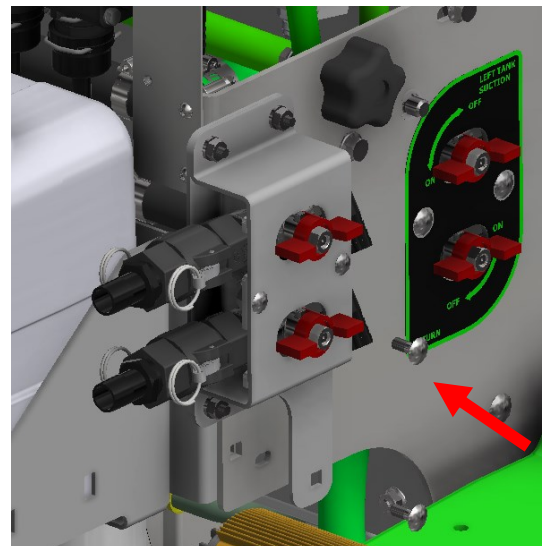
VALVE ASSEMBLY



VALVE ASSEMBLY W/FOAM MARKER



**STEP 7:** Remove the (2) bolts that secure the gas tank support and Attach the valve assembly to the *left* side of the upright.



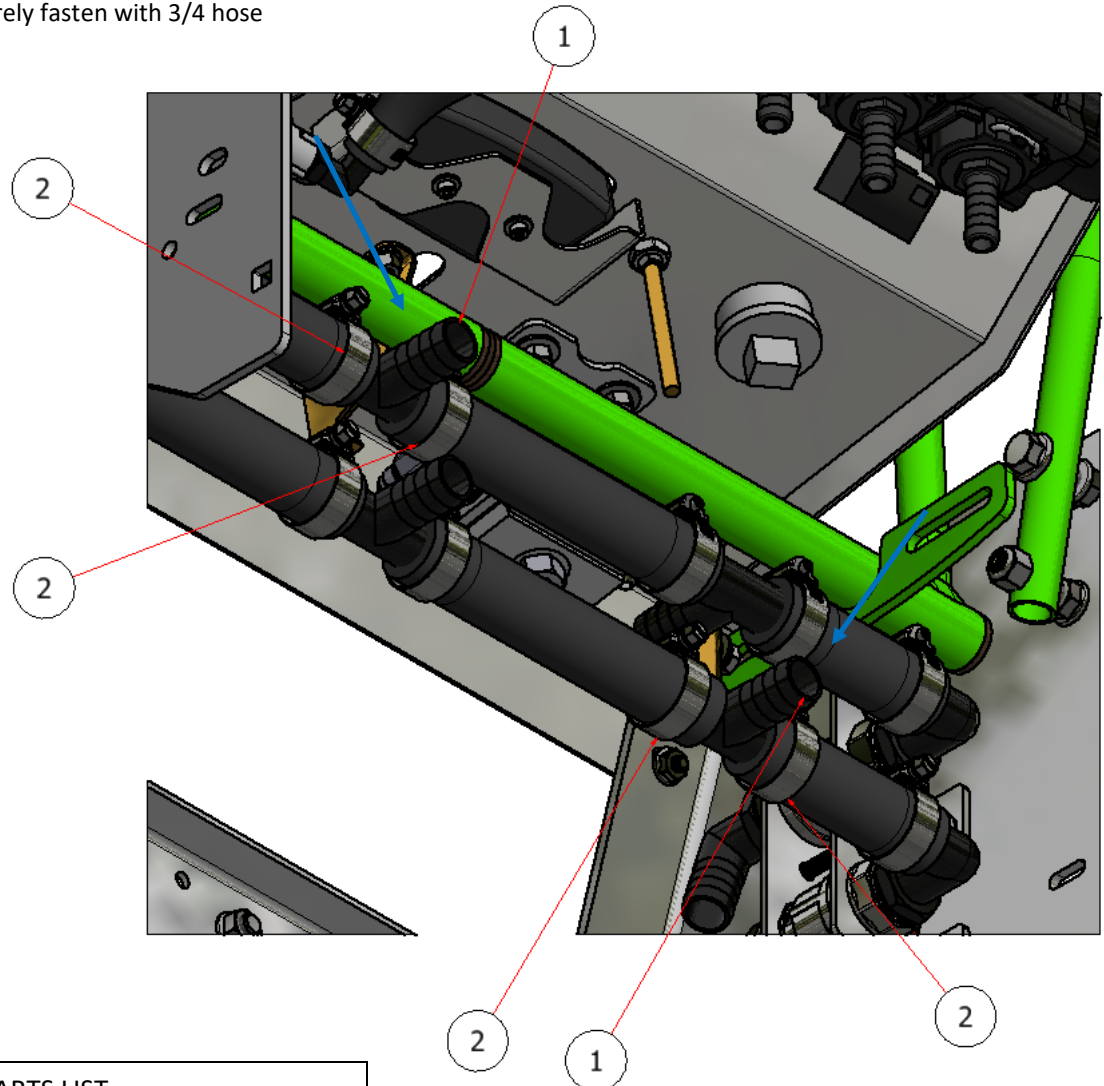
## 35 GALLON INSTALL INSTRUCTIONS

### NOTE:

- Before beginning step seven, BE SURE there is no pressure on the lines and fluid is drained.
- Parts removed for clarity.

### STEP 8:

- Remove the knee pad to access the return & suction lines.
- Carefully cut and install the “tee” fittings in the “suction” and “return” lines as shown (blue arrows). Securely fasten with 3/4 hose clamps.



### PARTS LIST

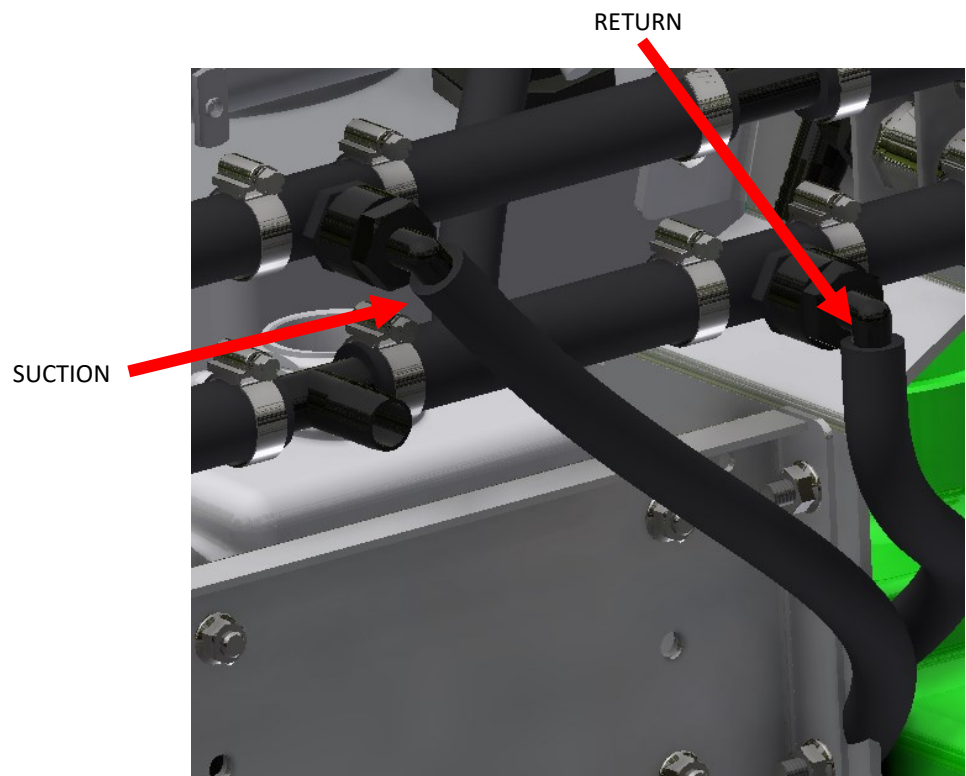
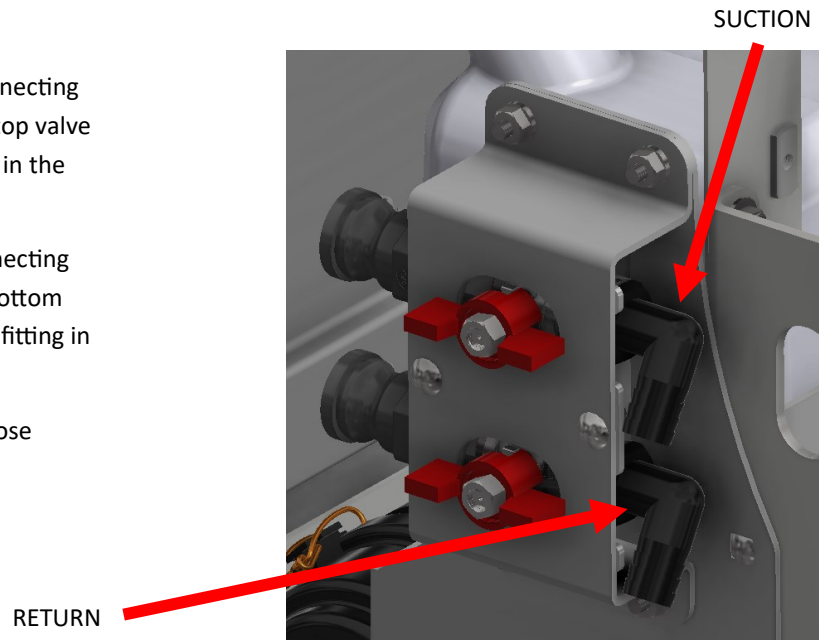
ITEM	QTY	PART NUMBER	DESCRIPTION
1	4	12HS	HOSE CLAMP, 3/4
2	2	S50062	TEE FITTING, 3/4 HOSE



## 35 GALLON INSTALL INSTRUCTIONS

### STEP 9:

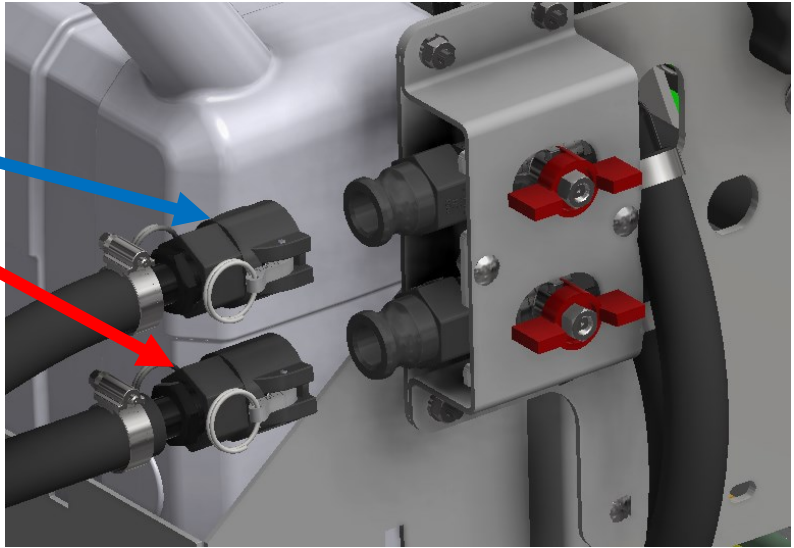
- Cut and install 3/4" suction hose, connecting one end to the suction fitting on the top valve and the other end to the "tee" fitting in the suction line.
- Cut and install 3/4" return hose, connecting one end to the return fitting on the bottom valve and the other end to the "tee" fitting in the return line.
- Securely fasten each end with 3/4" hose clamp.



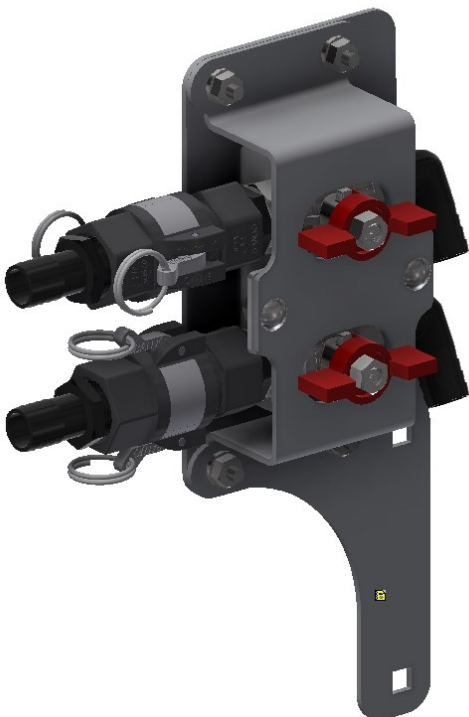
## 35 GALLON INSTALL INSTRUCTIONS

**STEP 10:** Connect the “quick disconnect” hoses from the tank to the valves.

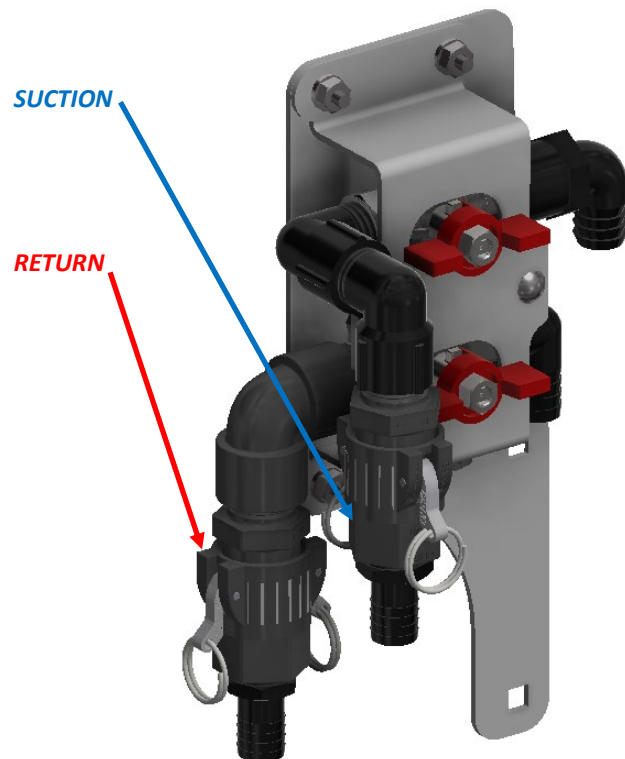
- Top valve is **SUCTION**.
- Bottom valve is **RETURN**.



VALVE ASSEMBLY



VALVE ASSEMBLY W/FOAM MARKER



## 35 GALLON INSTALL INSTRUCTIONS

### STEP 11:

- Set the battery in the battery box.
- Reconnect the battery cables, power cable and wires first followed by the ground wire.
- Attach the battery box cover and bungee strap.



GROUND

POWER



MADE IN THE USA

Steel Green Mfg.  
824 S State Road 39  
Lebanon, IN 46052  
(765)-481-2890  
[www.steelgreenmfg.com](http://www.steelgreenmfg.com)

MANUAL PART NO.	MANUAL REV.	DESCRIPTION	KIT PART NO.
SGM-008	E	35 GALLON TANK ATTACHMENT	A10034