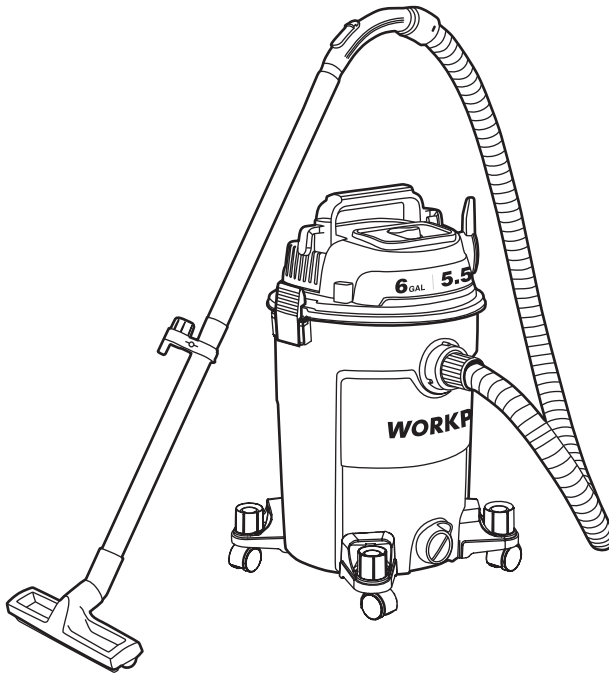


Item#: W125091AE  
Model#: K-615

# WORKPRO

## 6 GALLON WET/DRY VACUUM CLEANER

### Original Safety and Operating Manual



Thank you for buying a WORKPRO Wet/Dry Vacuum Cleaner. It has been engineered and manufactured to WORKPRO'S high standard for dependability, ease of operation, and operator safety. When properly cared for, it will give you years of rugged, trouble-free performance.



**WARNING:** To reduce the risk of injury, the user must read and understand the operator's manual before using this product.

**SAVE THIS MANUAL FOR FUTURE REFERENCE**



Distributed by :  
Hangzhou GreatStar Industrial Co., Ltd.  
No.35 Jiuhuan Road, Jiubao Town,  
Hangzhou 310019, China  
[www.greatstartools.com](http://www.greatstartools.com)

# TABLE OF CONTENTS

- Important Safety Instructions & Warnings----- 3
- Double Insulation Instructions ----- 3-4
- Extension Cords ----- 4
- Know Your Product----- 4
- Unpacking & Checking Carton Contents----- 5
- General Assembly Instructions----- 5-6
- Dry Vacuum Operation----- 6-7
- Liquid Vacuum Operation----- 7
- Blower Operation----- 8
- Maintenance----- 8
- Installing & Cleaning Cartridge Filter ----- 9
- Installing & Cleaning Foam Wet Filter----- 9
- Troubleshooting----- 10

**FOR YOUR SAFETY: CAREFULLY READ AND UNDERSTAND ALL INSTRUCTIONS BEFORE USE.**

# IMPORTANT SAFETY INSTRUCTIONS & WARNINGS

## READ AND UNDERSTAND ALL INSTRUCTIONS BEFORE USING THIS VACUUM.

Read and understand this operator's manual and all labels on the Wet/Dry Vacuum cleaner before operating. Safety is a combination of common sense, staying alert, and knowing how your vacuum works. Use this Wet/Dry Vac only as described in this manual. To reduce the risk of personal injury or damage to your Wet/Dry Vac, use only WORKPRO recommended accessories.

## SAVE THIS MANUAL FOR FUTURE REFERENCE.

When using an electrical appliance, basic precautions should always be followed including the following:


### **WARNING: TO REDUCE THE RISK OF FIRE, ELECTRIC SHOCK, OR INJURY:**

- Do not leave appliance when plugged in. Unplug from outlet when not in use and before servicing.
- Use indoors only.
- Do not allow to be used as a toy. Close attention is necessary when used by or near children.
- Use only as described in this manual. Use only manufacturer's recommended attachments.
- Do not run vac unattended.
- Do not vacuum, or use this Wet/Dry Vac near flammable liquids, gases, or explosive vapors like gasoline or other fuels, lighter fluids, cleaners, oil-based paints, natural gas, hydrogen, or explosive dusts like coal dust, magnesium dust, grain dust, or gun powder. Sparks inside the motor can ignite flammable vapors or dust.
- Do not vacuum anything that is burning or smoking, such as cigarettes, matches, or hot ashes.
- Keep cord away from heated surfaces.
- Do not expose to rain. Store indoors.
- Do not unplug by pulling on cord. To unplug, grasp the plug, not the cord.
- Do not use with damaged cord, plug, or other parts. If appliance is not working as it should, has been dropped, damaged, left outdoors, or dropped into water, return it to a service center.

- Do not pull or carry by cord, use cord as handle, close a door on cord, or pull cord around sharp edges or corners.
- Do not run Wet/Dry Vac over cord.
- Do not handle plug or the Wet/Dry Vac with wet hands.
- To reduce the risk of health hazards from vapors or dusts, do not vacuum toxic materials.
- Do not use or store near hazardous materials.
- Do not use this Wet/Dry Vac with a torn filter or without the filter installed except when vacuuming liquids as described in the operation section of this manual.
- To reduce the risk of injury from accidental starting, unplug power cord before changing or cleaning filter.
- Turn off Wet/Dry Vac before unplugging.
- Do not put any object into ventilation openings. Do not vacuum with any ventilation openings blocked; keep free of dust, lint, hair, or anything that may reduce air flow.
- Keep hair, loose clothing, fingers, and all parts of body away from openings and moving parts.
- To reduce the risk of falls, use extra care when cleaning on stairs.
- Unplug before connecting hose.
- This appliance is provided with double insulation. Use only identical replacement parts. See "DOUBLE INSULATION INSTRUCTIONS".
- This appliance has a polarized plug (one blade is wider than the other). To reduce the risk of electric shock, this plug is intended to fit in a polarized outlet only one way. If the plug does not fit fully in the outlet, reverse the plug. If it still does not fit, contact a qualified electrician. Do not modify the plug in any way.
- Do not vacuum drywall dust or fireplace soot or ash with standard Wet/Dry filter. This is a very fine dust which will not be captured by the filter and may cause damage to motor. When vacuuming fine dust use a fine dust filter (sold separately).

## DOUBLE INSULATION INSTRUCTIONS


This Wet/Dry Vac is double-insulated, eliminating the need for a separate grounding system. Use only identical replacements parts. Read the instructions for Servicing Double-Insulated Wet/Dry Vacs before servicing. Use this Wet/Dry Vac as described in this manual. Observe the following warnings:

 **DOUBLE INSULATED - GROUNDING NOT REQUIRED - WHEN SERVICING USE ONLY IDENTICAL REPLACEMENT PARTS.**

 **WARNING: To reduce the risk of electric shock, do not expose to rain. store indoors.**

 **WARNING: Servicing of double-insulated wet/dry vacuum**

With a double-insulated wet/dry vacuum, two systems of insulation are provided instead of grounding. No grounding means is provided on a double-insulated appliance, nor should a means for grounding be added. Servicing a double insulated wet/dry vacuum requires extreme care and knowledge of the system, and should

be done only by qualified service personnel. Replacement parts for a double-insulated wet/dry vacuum must be identical to the parts they replace. Your double-insulated wet/dry vac is marked with the words 'double insulated' and the symbol  (square within a square) may also be marked on the appliance.

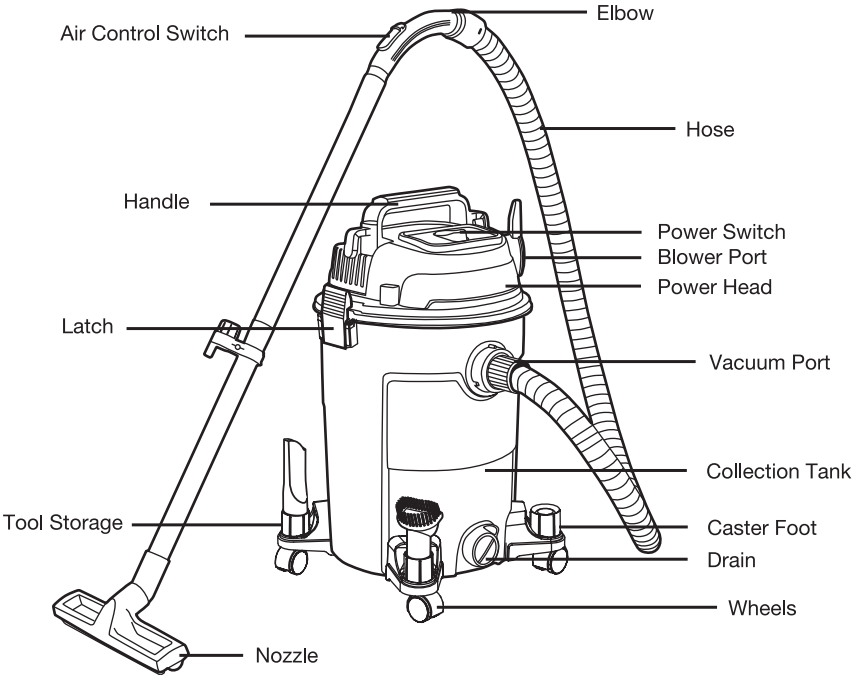
**CAUTION: DO NOT** use without filters in place.  
**CAUTION:** To reduce the risk of injury from moving parts, unplug before servicing.

## EXTENSION CORDS

When using an extension cord with your Wet/Dry Vac refer to the following table to determine the required A.W.G. wire size. Before using the vacuum cleaner, make sure the power cord and extension cord are in good working condition. Make repairs or replacements before using the vacuum cleaner. Only use extension cords that are rated for outdoor use.

110V-120V	Length of Extension Cord			
	25 Feet 7.5 Meters	50 Feet 15.25 Meters	100 Feet 30.5 Meters	150 Feet 45.7 Meters
Amps	A.W.G. Wire Size			
0-6	18	16	16	14
7-10	18	16	14	12
11-12	16	16	14	12
13-16	14	12	Not recommended	

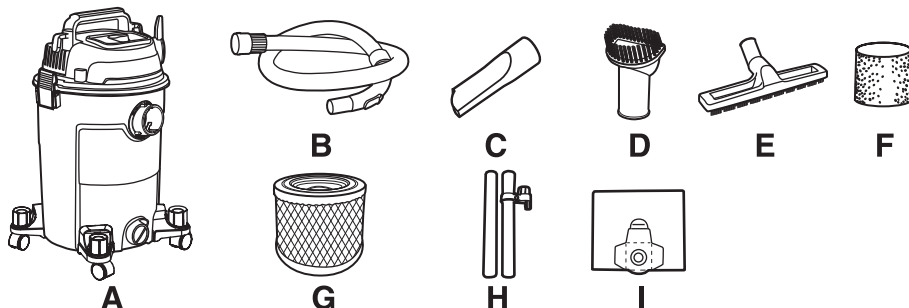
## KNOW YOUR PRODUCT



**120V~ 60Hz 10A**

## UNPACKING & CHECKING CARTON CONTENTS

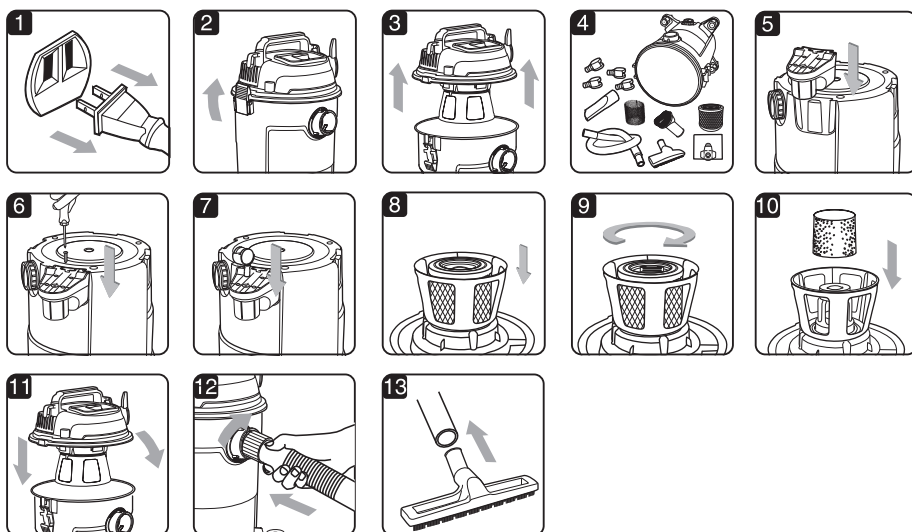
Remove all contents from the box. Remove the power head and take out any contents inside the collection tank. Check each item against the carton contents list.



Key	Description	Qty
A	Vac Assembled	1
B	Hose	1
C	Crevice Tool	1
D	Half-round dust brush	1
E	Multi-surface floor nozzle	1
F	Foam Wet Filter	1
G	Cartridge filter	1
H	Extension wand	2
I	Dust collection bag	1

NOTE: The hose and accessories for this vacuum are 1-1/4" (3.2 cm) diameter.

## GENERAL ASSEMBLY INSTRUCTIONS

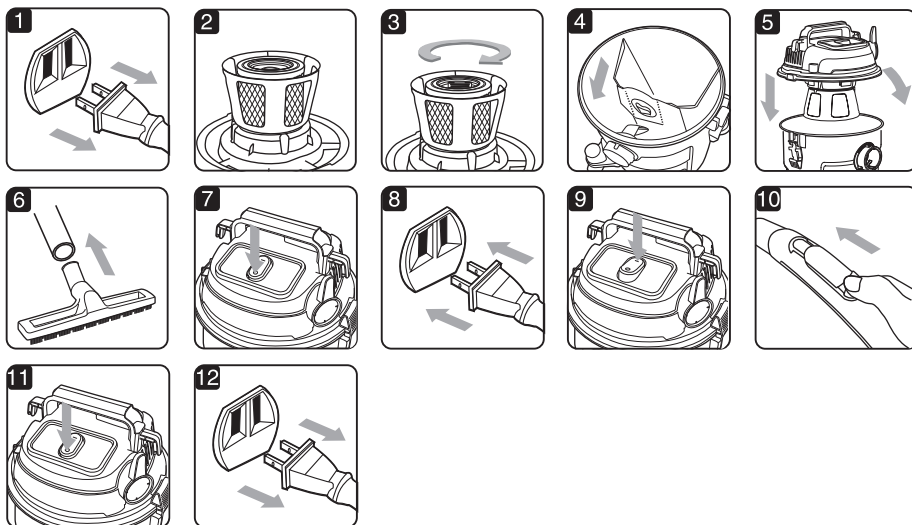


**⚠ WARNING:** To reduce the risk of electric shock, do not expose to rain. Make sure plug is disconnected before assembling the wet/dry vac.

## UNPACKING YOUR WET/DRY VACUUM & GENERAL ASSEMBLY

1. Verify that the power cord is disconnected from the outlet. (fig. 1)
2. Undo the latches, (fig. 2)
3. Lift the power head off the collection tank. (fig. 3)
4. Remove the contents from inside the collection tank; Make sure you have all contents as listed on page 5.
5. Invert the collection tank, take caster foot and place in slot on bottom of tank, and secure with screw provided. (fig 5&6) Insert casters into feet by placing stem of caster into holes on caster foot. Apply pressure and twisting motion until casters snap into place. (fig 7) Return the vacuum to the upright position.
6. For dry vacuum cleaning, install the supplied cartridge filter. (fig. 8 & 9) Your vacuum comes ready for dry vacuum cleaning. For installation instructions, see page 9.
7. For wet vacuum cleaning, install the supplied foam filter. (fig. 10) For installation instructions, see page 9.
8. Place the power head back on the collection tank, aligning the top section with the latches, and lock into place. (fig. 11)
9. Secure the large end of the hose onto the vacuum port on the collection tank and screw into place. (fig. 12)
10. Choose the desired accessories and push onto the hose. (fig. 13)

## DRY VACUUM OPERATION



## DRY VACUUMING

**⚠ WARNING:** Be sure to read, understand, and apply, information entitled 'safety instructions & warnings'. Do not vacuum in areas with flammable gases, vapors, or explosive dusts in the air. Flammable gases or vapors include but are not limited to: lighter fluid, solvent type cleaners, oil-based paints, gasoline, alcohol, or aerosol sprays. Explosive dusts include but are not limited to: coal, magnesium, grain, or gun powder. To reduce the risk of health hazards from vapors or dust, do not vacuum toxic materials.

1. Verify that the power cord is disconnected from the outlet. (fig.1)
2. In order to prepare your vacuum for dry vacuuming, verify that the supplied cartridge filter is securely mounted.
3. Make sure the filter is pushed in until it stops against the power head. (fig. 2) Your Wet/Dry Vac comes with the cartridge filter pre-installed. For installation instructions, see page 9.
4. Optional: For improved dust filtering, fit collection bag flange onto the inlet port, taking care not to damage the bag. Dust bag sold separately. (fig. 4)
5. Place the power head back on the collection tank, aligning the top section with the latches, and lock into place. (fig. 5)

## OPERATING INSTRUCTIONS: DRY VACUUMING

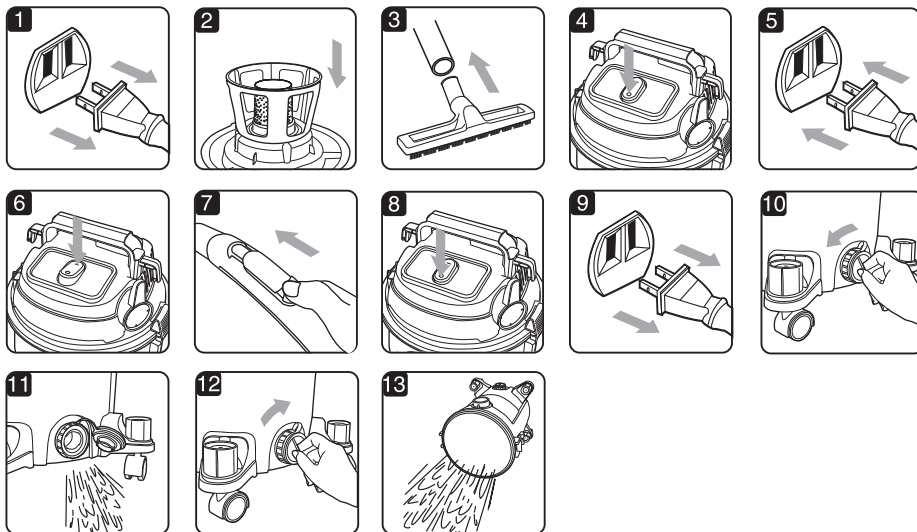
6. Insert the locking end of the hose into the vacuum port on the front side of tank and screw in place. Push the desired extension wands or attachments onto the elbow end of the hose. (fig. 6)
7. Verify that the switch is in the 'O' OFF position before plugging the power cord into the outlet. (fig. 7&8)
8. Turn the motor on by flipping the switch to the 'I' ON position. (fig. 9)
9. Adjust airflow by slipping the air control switch. Close completely for maximum air flow. and conversely, open completely for minimum air flow.(fig. 10)
10. Once you have completed vacuuming, flip the switch to the 'O' OFF position and unplug the power cord from the outlet. (fig. 11&12)

**O = OFF      I = ON**

**DO NOT use the cartridge filter for liquid vacuuming.**

**DO NOT use dust collection bag for liquid vacuuming.**

## LIQUID VACUUM OPERATION



## LIQUID VACUUMING

**⚠ WARNING:** Be sure to read, understand, and apply, information entitled 'safety instructions & warnings'. Do not vacuum in areas with flammable gases, vapors, or explosive dusts in the air. Flammable gases or vapors include but are not limited to: lighter fluid, solvent type cleaners, oil-based paints, gasoline, alcohol, or aerosol sprays. Explosive dusts include but are not limited to: coal, magnesium, grain, or gun powder. To reduce the risk of health hazards from vapors or dust, do not vacuum toxic materials.

**⚠ WARNING:** DO NOT plug power cord into power outlet. make sure plug is disconnected before changing the filters.

1. Verify that the power cord is disconnected from the outlet. Verify that the collection tank is clean and free of dust and dirt. (fig. 1)
2. Remove the cartridge filter and the dust collection bag, then carefully install the foam wet filter over the filter cage and place the power head back on the collection tank. (fig. 2) For installation instructions, see page 9.

**DO NOT use the cartridge filter for liquid vacuuming.**

3. Fit the desired extension wands or nozzle to the vacuum hose. (fig. 3)
4. Verify that the switch is in the 'O' OFF position before plugging the power cord into the outlet. (fig. 4 & 5)
5. Turn the motor on by flipping the switch to the 'I' ON position. (fig. 6)
6. Adjust airflow by slipping the air control switch. Close completely for maximum air flow. And conversely, open completely for minimum air flow.(fig. 7)
7. After use, flip the switch to the 'O' OFF position and unplug the power cord from the outlet. (fig. 8 & 9)
8. Open the drain outlet by twisting the plug anticlockwise, empty the collection tank into a suitable receptacle or drain. (fig. 10 & 11)

9. Close the drain outlet by twisting the plug clockwise, pour the remaining liquid out. (fig. 12 & 13)

### IMPORTANT!

The machine is fitted with a float valve that stops the suction action when the collection tank reaches its maximum capacity. You will notice an increase in motor speed. When this happens, turn off the machine, disconnect from power supply, and drain the liquid into a suitable receptacle or drain. After wet vacuuming, turn the machine off and remove plug from power supply. Empty the collection tank, clean and dry the inside and outside before storage. **REMEMBER!** The foam wet filter must be removed after wet vacuuming, and a cartridge filter must be installed before dry vacuuming again.

## BLOWER OPERATION

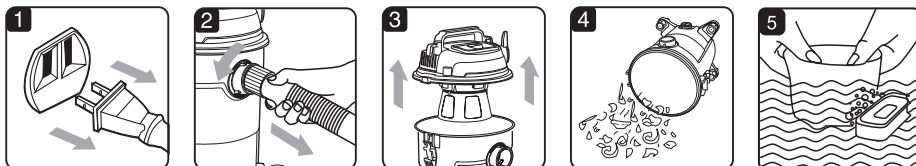


This vacuum can be used as a powerful blower. To use your unit as a blower, clear hose of any obstructions.

1. Verify that the power cord is disconnected from the outlet. Verify that the collection tank is clean and free of dust and dirt. (fig. 1)
2. Remove machine hose end from vacuum port by twisting the hose end while pulling the end out of vacuum port. (fig. 2)
3. Insert machine hose end into blower port by twisting the hose end while pushing the end into blower port. It is normal for this to be a tight fit. Caution should be used when using as a blower due to the powerful force of air when using certain attachments. (fig. 3)
4. To remove hose from blower port, twist the hose end while pulling end out of blower port.

**⚠ WARNING:** Always wear eye protection to prevent rocks or debris from being blown or ricocheting into the eyes or face which can result in serious injury.

## MAINTENANCE



1. Verify that the power cord is disconnected from the outlet. (fig.1)
2. Disconnect the hose from the vacuum. (fig. 2)
3. Undo the latches and remove the power head from the collection tank. (fig. 3)
4. Clear all dirt or debris from the collection tank and hose. (fig. 4)
5. Clean the foam filter by washing it with water and mild soap. (fig. 5)
6. Check the hose, attachments, and power cord to verify that they have not been damaged.
7. Place power head on collection tank and secure latches.

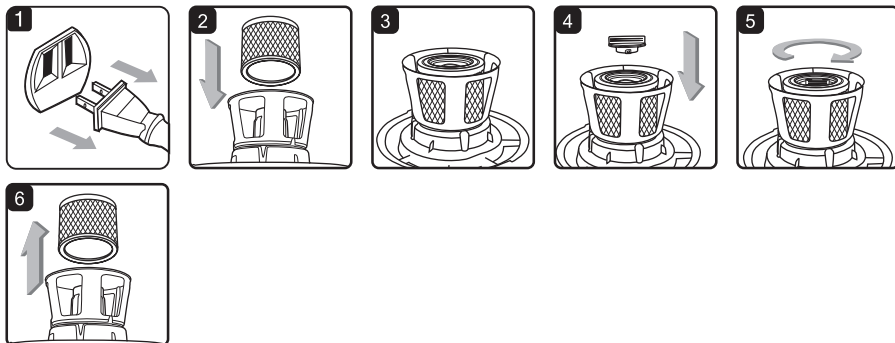
### IMPORTANT!

Change the cartridge filter regularly for best performance. ALWAYS USE CARTRIDGE FILTER FOR DRY VACUUMING. If the machine is used without the cartridge filter, the motor will burn out and the warranty will be voided. Always keep spare filters on hand. NOTICE! The filters included are made of high quality materials designed to stop small dust particles. The cartridge filter should be used for dry pick-up only. A dry cartridge filter is necessary to pick up dust. If the cartridge filter is wet, it will clog quickly and be very difficult to clean. Handle the filter carefully when removing it for cleaning and replacing it. Check the filters for tears or small holes, a small hole can let dust pass through and out of the filter. Do not use a filter with holes or tears in it; replace it immediately.

**⚠ WARNING!** Always disconnect the plug from the power outlet before removing the power head from the collection tank.



## INSTALLING & CLEANING CARTRIDGE FILTER



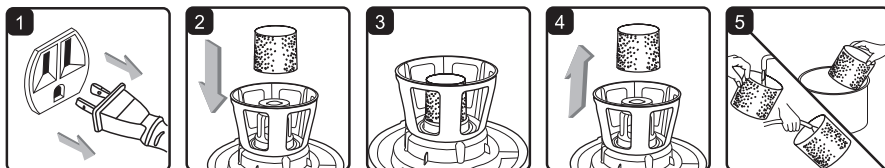
### Installing Cartridge Filter

1. Verify that the power cord is disconnected from the outlet. (fig. 1)
2. Remove power head and place in upside down position.
3. Install the cartridge filter over the filter cage and carefully push filter in until it stops against the power head. (fig. 2 & 3)
4. Place filter retainer on top of cartridge filter and tighten down by turning retainer clockwise. (fig. 4 & 5)

### Removing and Cleaning Cartridge Filter

1. Unlock and remove the filter retainer by turning retainer handle counter clockwise.
2. Carefully hold and pull the cartridge filter up for removal. (fig. 6)
3. Clean the cartridge filter by gently tapping or brushing dirt off. Cleaning should not be done indoors in living areas. For optimal performance a new filter is recommended.
4. Install cleaned or new filter as instructed above in steps 1 - 5 of Installing Cartridge Filter.
5. Wet filters should be removed and allowed to air dry for 24 hours before installing onto the filter cage.

## INSTALLING & CLEANING FOAM WET FILTER



### Installing Foam Wet Filter

1. Verify that the power cord is disconnected from the outlet. (fig. 1)
2. Remove power head and place in upside down position. Follow instructions to remove cartridge filter.
3. Carefully slide foam wet filter down over the filter cage making sure the cage is completely covered. (fig. 2 & 3)
4. Place the power head onto the collection tank.

### Cleaning Foam Wet Filter

1. With the removed power head in an upside down position, carefully remove foam wet filter. (fig. 4)
2. Use a mild soap and water solution to wash foam wet filter and rinse with clean water. (fig. 5)
3. Allow filter to air dry before installing and using again.

# TROUBLESHOOTING

**⚠ WARNING:** To reduce the risk of electric shock, unplug before troubleshooting

Symptom	Possible Causes	Corrective Action
Vacuum will not operate.	1) No power supply.	1) Check power supply—cord, breakers, fuses.
	2) Faulty power cord.	2) Unplug and check the power cord. If damaged, have it repaired by a professional.
	3) Collection tank full.	3) Empty collection tank.
Dust comes from motor cover.	1) The dust filter is missing or damaged.	1) Attach or replace dust filter.
Reduced efficiency and motor/speed vibration.	1) There is a blockage in the nozzle or hose, or the collection tank inlet. Or dust filter blocked by fine dust.	1) Check nozzle, hose and collection tank inlets for blockage. Take off the filter and clean it or install a new filter.

## Manufacturer:

Ninghai Kaiteli Electronic Appliance Co., Ltd.  
No.1 Meiwang Road, Meilin Street, Ninghai, Zhejiang, 315600 China