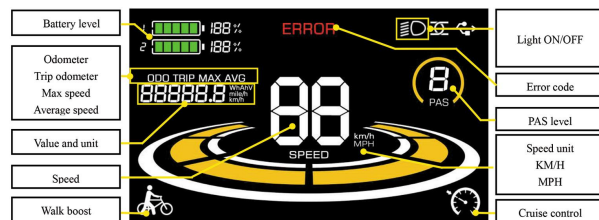
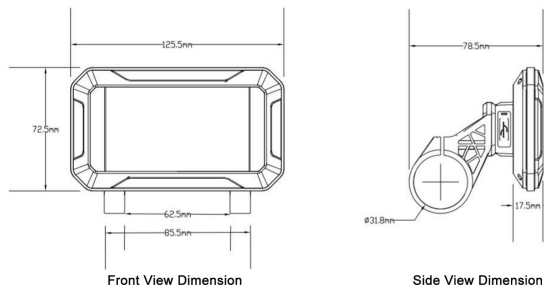


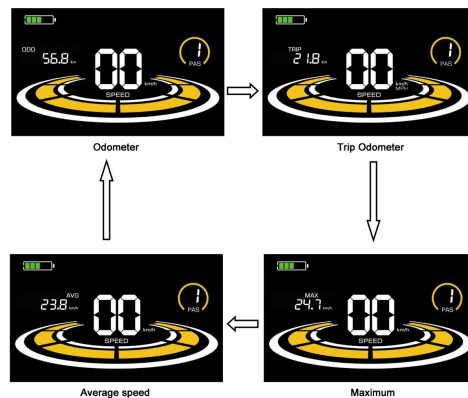
Display Use & Maintenance

Color LCD display



The YL90T-H display is equipped with five buttons on the corresponding operating unit: power on/off, plus, minus, light, and toggle.

Long press to power on/off the display. When the display is off, it will not use the battery power and the leakage current is less than 1uA. The display will automatically shut off if it is not used for more than 10 minutes.



When the display is powered on, it will show the Current Speed (km/h) and Odometer (km) by default. Short press to switch between Odometer (km), Trip Odometer(km), Maximum Speed (km/h), and Average Speed (km/h).

Controller Use & Maintenance



- ① Battery negative connection line
- ② Battery positive connection line
- ③ Phase line
- ④ Tail light wire
- ⑤ Integrated main line
- ⑥ Power sensor line
- ⑦ Motor Hall plug wire

1. Please be careful not to get water into the controller box
2. When the bike does not work: 1)Check the connection of controller cables; 2) Try to restart or Replace the controller; 3)Contact us with email

Maintenance

1. **Maintenance of the brake:** Check whether there is friction with the frame or abnormal noise during rotation, and adjust the distance and parallelism through screws. Regularly check the wear of the brake pads, replace the brake pads from time to time, and keep the brake discs clean.
2. **Maintenance of Control cables:** Lightly hold the brake (difficulty, one-finger gap), check whether the handbrake is too loose, tighten, or ride test.
3. **Maintenance of Bearing adjustment:** After riding the bicycle for a period of time, please check the fastening of the front and rear wheel fixing bolts from time to time, re-warp the bolts in time, and ensure that the front and rear wheel bearings are parallel and correct.
4. **Maintenance of Wheel adjustment:** Check the tire pressure from time to time and always maintain 30 psi.
5. **Maintenance of Lubrication:** Lubricate the chain, brake disc and other parts, always remove all debris, dust and dirt/sand
6. **Maintenance of Reflector:** None
7. **Maintenance of Tires:** Regularly check the wear and tear of the tires and replace them regularly. Check the tire pressure and always maintain 30 psi.
8. **Maintenance of Handlebar:** For handlebar installation, please strictly follow the assembly instructions to ensure center alignment, firmness and reliability.
9. **Maintenance of Seat adjustment:** The height of the bicycle seat can be adjusted by the tightness of the seat tube clamp, and the adjustable height is 12cm.
10. **Maintenance of Handlebar:** Check whether the speed display of the meter is abnormal, keep the maximum handlebar, and check the upper limit of the maximum speed;
11. **Maintenance of Derailleur:** Do not use it in a stationary state. In a rotating state, adjust it twice through the transmission. Whether the chain moves smoothly. The transmission has 7-speed and 9-speed.

FAQ

- **Is there a power usage or battery gauge on the bike?**
Yes, there is a full screen LCD display. There is also an additional LED battery gauge on the side of the battery pack. 2x the info!
- **Is there a switch to prevent accidental starting?**
Yes, there is an on/off button on the battery pack. The brake levers also come standard with a safety power stop switch built in.
- **How do I lock it up and what can I do to help minimize the chance of it being stolen?**
AOSTIRMOTOR Bike has some great anti-theft features, including a locking battery rack with keys to keep bike safe, and rear wheel which is bolted down reduce the chances to be stolen.
Most standard U-locks and cable locks work fine on our AOSTIRMOTOR Ebike.
- **Does it work in the rain?**
The components are all waterproof and work very well in wet conditions, But we do not suggest to use our ebike in a rain day.
We suggest that you should keep your bike parked indoors and keep him in a dry situation.

AOSTIRMOTOR

Manual

S17-1500W

1500W



POWER BRINGS JOY

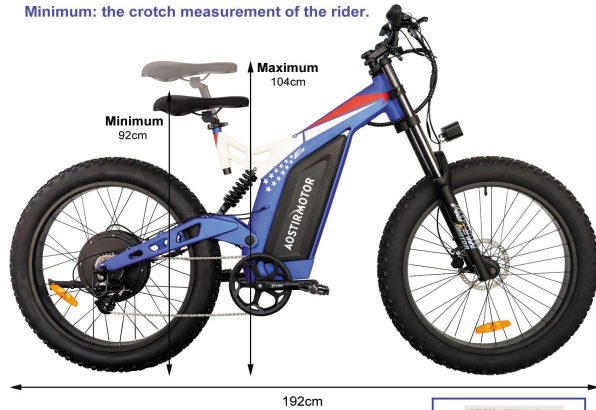
www.AOSTIRMOTOR.com

aostirmotor@gmail.com



Product Description

Minimum: the crotch measurement of the rider.



Tools necessary to accomplish assembly and adjustment



Frame	6061 aluminum alloy	Battery	48V 14.5Ah lithium battery SAMSUNG
Motor	1500W Motor	Controller	48V 30A
Charge Time	4-6 hours	Max Speed	50 km/h
Range Distance	30-45 km	Brake	F/R Mechanical Brake
Light	Front light, rear reflector	Display	Color LCD display
Fork	Al alloy suspension fork	Tire	26x4.0
Derailleur	Outer 7 speed SHIMANO	Packing Size	153*28*88cm

Safety Notice

To Ensure Your Safety, Make the Following Functional Checks Before Driving:

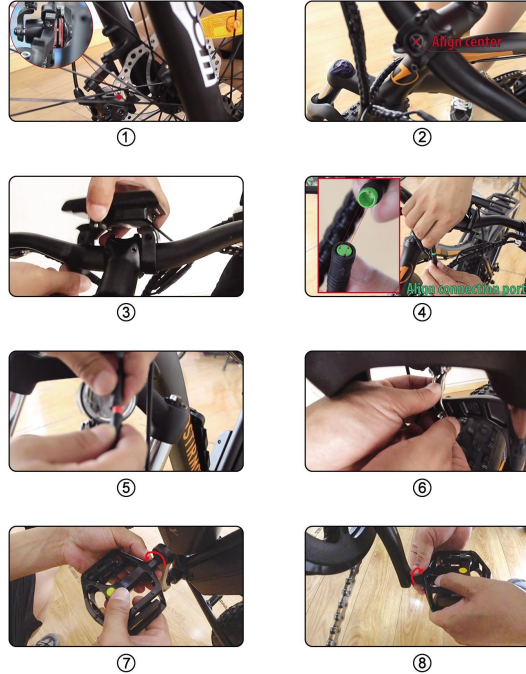
1. Test brake system, throttle, and power system.
2. Tire pressure should be at 30 psi.
3. Check front wheel lug-nuts, securely tighten before every ride.
4. Battery charge level- found on side of battery.

5. **Operation of Brake and gear:** Check whether there is friction with the frame during rotation and abnormal noise. Adjust the distance and parallelism through screws.

6. **Operation cautions concerning wet weather and night-time:** bicycles are partially waterproof, but for safety reasons, it is not recommended to ride on heavy rain; for night rides, please turn on the headlights and use them in a safe state.

7. **Operation Guide for safe on-and-off road :** The bicycle frame is made of aluminum alloy, the overall structure is stable, and the strength is high. However, for your safety, please wear protective gear and make relevant safety preparations on rugged roads or off-road conditions.

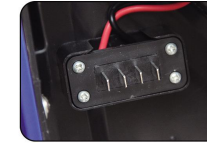
Installation Instructions



1. Open your package.
2. Take out the tool box.
3. Take out the bicycle from the package and put it on a soft surface to avoid scratches. Cut the tie that secures the front wheel to the side
4. Remove the protective foam.
5. Open the accessory kit and remove the tool kit
6. Invert the bicycle.
7. Remove the large fixing bolt on the front fork.
8. Put the front wheel on the front fork and place the disc brake pad on the front wheel in the middle of the disc brake caliper(Figure 1).
9. Use the supplied 15mm flat tool to tighten the two bolts.
10. Tie the key to the handlebar clamp, cut the zipper, and then use the Allen wrench in the tool kit to remove the clamp.
11. Place the handlebar in the middle position (Figure 2), install the rod clamp and tighten the screws with the included Allen wrench.
12. Install the LCD-display on the handlebar (Figure 3), tighten the screws, and connect the green connecting wire (Figure 4)
13. Grasp the bicycle light and unscrew the lens. Then, remove the plastic insulator, re-tighten the lens, and then connect the red cable (Figure 5), and connect the bicycle light to the screw above the front fork (Figure 6).
14. Install the pedal. The right pedal rotates clockwise (Figure 7), and the left pedal rotates counterclockwise (Figure 8).NOTE: Pedal mark "L" means left and "R" means right.
15. Vertical bicycle
16. Push the seat into the column, fix it in the desired position, tighten the screws, and then fix it.
17. Installation is complete. When connecting meters, headlights, brake circuit breakers, handlebars, etc., please align them and do not install violently(Figure 4).

Assembly instructions for accomplishing complete and proper assembly.

Battery Installation & Maintenance



1. Find the battery port on your electric bike.



2. Find the interface on your battery



3. Align the interface and install the battery



4. Install the battery complete



5. Turn it clockwise to lock your battery.



6. Press down the key and turn it counterclockwise to unlock your battery.

1. When not using the battery for a long time, please charge it 1-2 times every month.
2. Please keep the key properly. If your key is lost, we can provide a new key according to the nameplate number on the key
3. Please keep the battery environment dry, for example, do not stay in the rain for a long time
4. Please use a universal meter to test the battery attenuation regularly