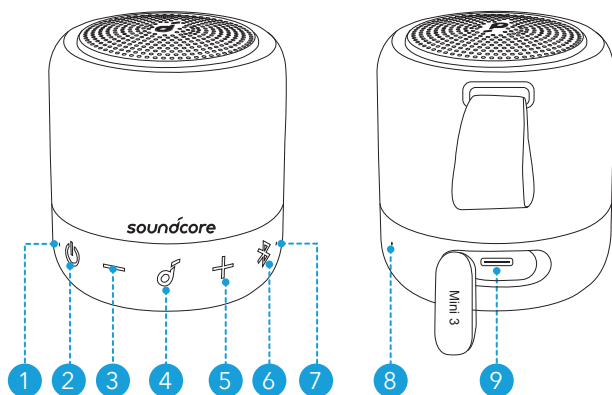


soundcore



Soundcore Mini 3
USER MANUAL

At a Glance

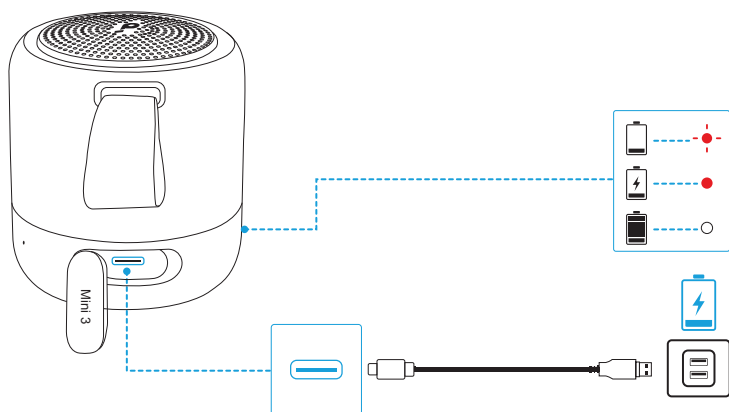


- 1 Power LED
- 2 Power button
- 3 Volume down button
- 4 Multi-function button
- 5 Volume up button
- 6 Bluetooth/PartyCast button
- 7 Bluetooth/PartyCast LED
- 8 Microphone
- 9 USB-C charging port

Charging



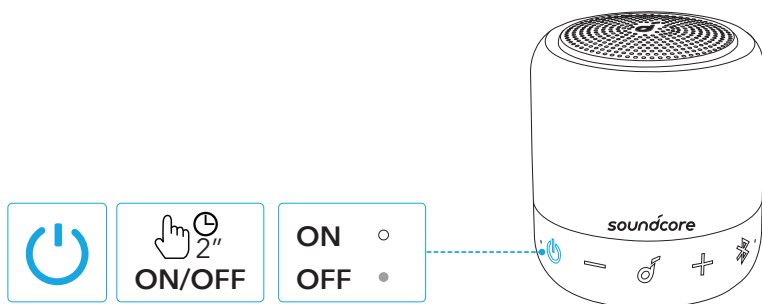
- Use the provided USB-C cable to prevent any damage.
- Fully charge this speaker before the first use to prolong the lifespan of the built-in battery.
- Disconnect this speaker from the charger when fully charged. Do not charge for extended periods.



	Flashing red	Low battery
	Steady red	Being charged
	Steady white	Fully charged

Powering On/Off

To power on or off, press and hold the power button for 2 seconds.

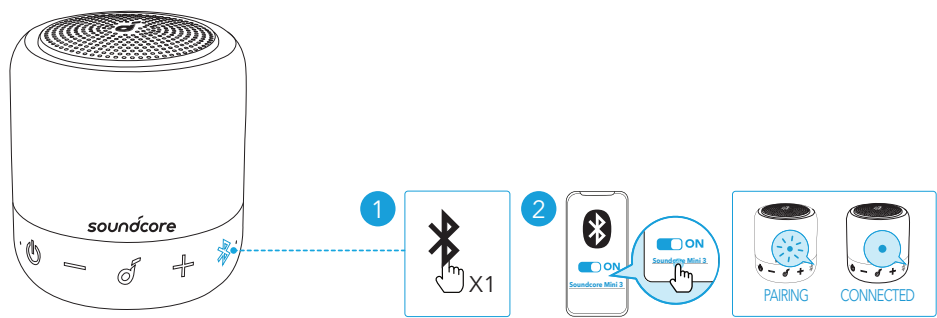


- This speaker will power off automatically 30 minutes after no audio input or button inactivity.

Using your Soundcore Mini 3

Bluetooth Mode

With this speaker, you can enjoy music through your Bluetooth-enabled devices.



	Press	Enter Bluetooth pairing mode
	Flashing blue	Bluetooth pairing
	Steady blue	Bluetooth connected



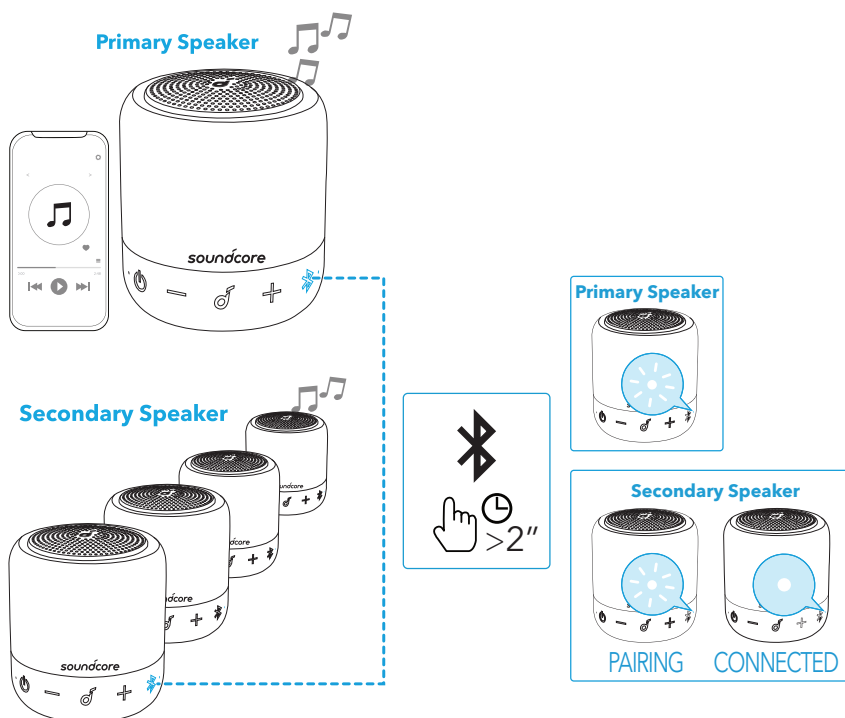
- Dual Bluetooth Connection: This speaker can pair up to 2 mobile devices via Bluetooth. To pair with another device, press the Bluetooth button to re-enter Bluetooth pairing mode.
- This speaker can only play music on one mobile device at a time. To play from another connected device, pause the currently active device first.
- Each time you power on your Soundcore speaker, it will automatically connect to your last connected device if available within the Bluetooth range. If not, press the Bluetooth button to enter Bluetooth pairing mode.

PartyCast Mode

You can wirelessly connect up to 100 identical Soundcore Mini 3 speakers together.

1. Connect one Soundcore Mini 3 speaker with your smartphone or tablet as the primary speaker.
2. Press and hold the Bluetooth button on the primary speaker and all desired speakers to enter pairing mode.




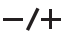


>>> When successfully connected, the Bluetooth LED on the primary speaker will continue flashing white, while on the secondary speakers will turn white.






When PartyCast mode is successfully entered:

- Any secondary speaker can be switched to become the primary speaker by pressing the Bluetooth button twice and connecting to your smartphone. Any primary speaker can be switched to become the secondary speaker by pressing the Bluetooth button twice and searching for an available primary speaker.
- To exit the PartyCast mode, press and hold the Bluetooth button on any speaker for 2 seconds.

Button Controls

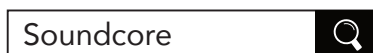
	Press	Play/Pause
	Press twice	Next track
	Press thrice	Previous track
	Press	Adjust volume
	Press	Answer/End a call
	Press	Answer a second incoming call and put the current call on hold

	Press and hold for 2 seconds	Reject an incoming call
	Press and hold for 2 seconds	Switch between a call on hold and an active call
	Press and hold for 2 seconds	Activate Siri or other voice assistant software

Soundcore App

Download the Soundcore App for enhanced product experience.

- Check product information
- Update firmware
- Indicate battery status
- Switch BassUp mode
- Remotely control the volume and play/pause



Google Play and the Google Play logo are trademarks of Google Inc.



Apple and the Apple logo are trademarks of Apple Inc.

Specifications

 Specifications are subject to change without notice

DC power input	5 V $\overline{\text{---}}$ 1 A
Battery capacity	1800 mAh / 3.7 V
Audio output power	6 W
Charging time	2-3 hours
Playtime (varies by volume level and music content)	Up to 15 hours
Waterproof level	IPX7
Bluetooth version	5.0
Bluetooth range	20 m / 66 ft