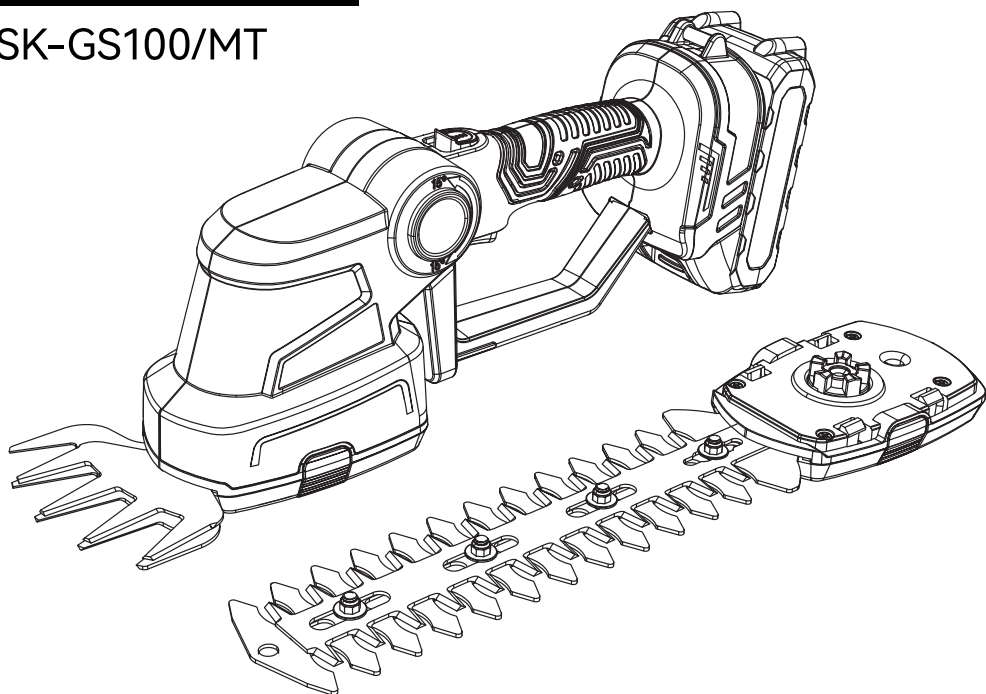




CORDLESS HEDGE TRIMMER & GRASS SHEAR

SK-GS100/MT



Notice: The blower is intended for household or commercial use.



For your personal safety, read and understand before using.
Save these instructions for future reference.

EXPLANATION OF THE SYMBOLS



Warning symbols with information on damage and injury prevention.



Warning of electrical voltage and shock.



Read the operation instructions carefully.



Read and understand all instructions before operating the product. Follow all warnings and safety instructions.



Wear hearing protection.



Wear eye and head protection.



Wear a dust mask.



Wear protective clothing.



Wear protective gloves.



DANGER – keep hands away from blade



Do not expose to rain



Remove plug from the mains immediately if the cable is damaged or cut



Warning: cutting means continues to run after the motor is switched off



Keep bystanders away



Noise Level LWA in dB in accordance with Noise Directive



Electrical products must not be disposed of with the domestic waste.



Protect the rechargeable battery from sunlight and heat (max. 50°C).



Protect the rechargeable battery from water and moisture.



Protect the rechargeable battery from fire.



The charger is for indoor use only.



Miniature fuse



Protection class II (double insulation)



Remove the battery prior to servicing the product.

INTRODUCTION




The operating instructions are part of this product and contain important information on safety, use and disposal. It is essential that you read the instructions before assembling, operating and maintaining the product. Use the product only as described and for the range of applications specified. Keep this manual safely and in the event that the product is passed on, hand over all documents to the third party.

Intended Use

The appliance is only intended for cutting and trimming thin shoots on hedges, bushes and ornamental shrubs, as well as for cutting small sections of lawns, including lawn edges in the domestic environment. This appliance is only for use by adults. The use of the appliance in rain or in humid environments is prohibited. Any other uses or modification to the product are deemed to be improper usage and carries a significant risk of accidents. The manufacturer accepts no responsibility for damage(s) attributable to misuse. This appliance is not intended for commercial use.

Product Parameters

Voltage	22V(MAX)
Trimmer Blade Length	8inch
Maximum Diameter Cut	1/4inch
Trimmer Blade Speed	1200 Strokes/minute
Grass Shear Blade Speed	1200 Strokes/minute
Battery Pack Voltage	22V  (MAX) 1.5AH
Charge Time	2H

SAFETY WARNINGS

General power tool safety warnings



WARNING

Read all safety warnings, instructions, illustrations and specifications provided with this power tool. Failure to follow all instructions listed below may result in electric shock, fire and /or serious injury.

Save all warnings and instructions for future reference.

The term “power tool” in the warnings refers to your mains-operated (corded) power tool or battery-operated (cordless) power tool.

Work area safety

- Keep work area clean and well lit. Cluttered or dark areas invite accidents.
- Do not operate power tools in explosive atmosphere, such as in the presence of flammable liquids, gases or dust. Power tools create sparks which may ignite the dust or fumes.
- Keep children and bystanders away while operating a power tool. Distractions can cause you to lose control.

Electrical safety

- Power tool plugs must match the outlet. Never modify the plug in any way. Do not use any adapter plugs with earthed (grounded) power tools. Unmodified plugs and matching outlets will reduce risk of electric shock.
- Avoid body contact with earthed or grounded surfaces, such as pipes, radiators, ranges and refrigerators. There is an increased risk of electric shock if your body is earthed or grounded.

- c) Do not expose power tools to rain or wet conditions. Water entering a power tool will increase the risk of electric shock.
- d) Do not abuse the cord. Never use the cord for carrying, pulling or unplugging the power tool. Keep cord away from heat, oil, sharp edges or moving parts. Damaged or entangled cords increase the risk of electric shock.
- e) When operating a power tool outdoors, use an extension cord suitable for outdoor use. Use of a cord suitable for outdoor use reduces the risk of electric shock.
- f) If operating a power tool in a damp location is unavoidable, use a residual current device (RCD) protected supply. Use of an RCD reduces the risk of electric shock.

Personal Safety

- a) Stay alert, watch what you are doing and use common sense when operating a power tool. Do not use a power tool while you are tired or under the influence of drugs, alcohol or medication. A moment of inattention while operating power tools may result in serious personal injury.
- b) Use personal protective equipment. Always wear eye protection. Protective equipment such as a dust mask, non-skid safety shoes, hard hat or hearing protection used for appropriate conditions will reduce personal injuries.
- c) Prevent unintentional starting. Ensure the switch is in the off-position before connecting to power source and /or battery pack, picking up or carrying the tool. Carrying power tools with your finger on the switch or energising power tools that have the switch on invites accidents.
- d) Remove any adjusting key or wrench before turning the power tool on. A wrench or a key left attached to a rotating part of the power tool may result in personal injury.
- e) Do not overreach. Keep proper footing and balance at all times. This enables better control of the power tool in unexpected situations.
- f) Dress properly. Do not wear loose clothing or jewellery. Keep your hair and clothing away from moving parts. Loose clothes, jewellery or long hair can be caught in moving parts.
- g) If devices are provided for the connection of dust extraction and collection facilities, ensure these are connected and properly used. Use of dust collection can reduce dust-related hazards.
- h) Do not let familiarity gained from frequent use of tools allow you to become complacent and ignore tool safety principles. A careless action can cause severe injury within a fraction of a second.

Power tool use and care

- a) Do not force the power tool. Use the correct power tool for your application. The correct power tool will do the job better and safer at the rate for which it was designed.
- b) Do not use the power tool if the switch does not turn it on and off. Any power tool that cannot be controlled with the switch is dangerous and must be repaired.
- c) Disconnect the plug from the power source and /or remove the battery pack, if detachable, from the power tool before making any adjustments, changing accessories, or storing power tools. Such preventive safety measures reduce the risk of starting the power tool accidentally.

- d) Store idle power tools out of the reach of children and do not allow persons unfamiliar with the power tool or these instructions to operate the power tool. Power tools are dangerous in the hands of untrained users.
- e) Maintain power tools and accessories. Check for misalignment or binding of moving parts, breakage of parts and any other condition that may affect the power tool's operation. If damaged, have the power tool repaired before use. Many accidents are caused by poorly maintained power tools.
- f) Keep cutting tools sharp and clear. Properly maintained cutting tools with sharp cutting edges are less likely to bind and are easier to control.
- g) Use the power tool, accessories and tool bits etc. In accordance with these instructions, taking into account the working conditions and the work to be performed. Use of the power tool for operations different from those intended could result in a hazardous situation.
- h) Keep handles and grasping surfaces dry, clean and free from oil and grease. Slippery handles and grasping surfaces do not allow for safe handling and control of the tool in unexpected situation.

Battery tool use and care

- a) Recharge only with charger specified by the manufacturer. A charger that is suitable for one type of battery pack may create a risk of fire when used with another battery pack.
- b) Use power tools only with specifically designed battery packs. Use of any other battery packs may create a risk of injury and fire.
- c) When battery pack is not in use, keep it away from other metal objects, like paper clips, coins, keys, nails, screws or other small metal objects, that can make a connection from one terminal to another. Shorting the battery terminals together may cause burns or a fire.
- d) Under abusive conditions, liquid may be ejected from the battery; avoid contact. If contact accidentally occurs, flush with water. If liquid contacts eyes, additionally seek medical help. Liquid ejected from the battery may cause irritation or burns.
- e) Do not use a battery pack or tool that is damaged or modified. Damaged or modified batteries may exhibit unpredictable behavior resulting in fire, explosion or risk of injury.
- f) Do not expose a battery pack or tool to fire or excessive temperature. Exposure to fire or temperature above 130°C may cause explosion.
- g) Follow all charging instructions and do not charge the battery pack or tool outside the temperature range specified in the instructions. Charging improperly or at temperatures outside the specified range may damage the battery and increase the risk of fire.

Safety instructions for hedge trimmer

- a) Keep all parts of the body away from the blade. Do not remove cut material or hold material to be cut when blades are moving. Blades continue to move after the switch is turned off. A moment of inattention while operating the hedge trimmer may result in serious personal injury.

- b) Carry the hedge trimmer by the handle with the blade stopped and taking care not to operate any power switch. Proper carrying of the hedge trimmer will decrease the risk of inadvertent starting and resultant personal injury from the blades.
- c) When transporting or storing the hedge trimmer, always fit the blade cover. Proper handling of the hedge trimmer will decrease the risk of personal injury from the blades.
- d) When clearing jammed material or servicing the unit, make sure all power switches are off and the battery pack is removed or disconnected. Unexpected actuation of the hedge trimmer while clearing jammed material or servicing may result in serious personal injury.
- e) When clearing jammed material or servicing the unit, make sure all power switches are off and the lock-off is in the locked position. Unexpected actuation of the hedge trimmer while clearing jammed material or servicing may result in serious personal injury.
- f) Hold the hedge trimmer by insulated gripping surfaces only, because the blade may contact hidden wiring. Blades contacting a "live" wire may make exposed metal parts of the hedge trimmer "live" and could give the operator an electric shock.
- g) Keep all power cords and cables away from cutting area. Power cords or cables may be hidden in hedges or bushes and can be accidentally cut by the blade.
- h) Do not use the hedge trimmer in bad weather conditions, especially when there is a risk of lightning. This decreases the risk of being struck by lightning.

Specific safety warnings for hedge trimmer

- Children may never use the hedge trimmer
- Do not use the hedge trimmer while anyone especially children is in the vicinity.
- Wear appropriate clothing when operating! Do not wear loose clothing or jewellery which could get caught in moving parts. Wearing heavy-duty gloves, non-slip footwear and goggles.
- Wear hearing protection and safety goggles.
- Always check the hedges and bushes for foreign objects, and keep away from the foreign objects. If the cutting unit comes in contact with a foreign object, stop the motor and allow the hedge trimmer to come to a standstill.
- Always hold the hedge trimmer firmly and properly when operating.
- The hedge trimmer is only intended to be used at ground, do not use it on the ladders or any other unstable support.
- Before operating the hedge trimmer, always check and make sure the locking devices of the moving elements are in the locked position.
- To stop the hedge trimmer in an emergency situation, pull the battery off.
- Always make sure the hedge trimmer is in the proper working position before the motor is started.

Safety instructions for grass Shear

Never allow children, persons with reduced physical, sensory or mental capabilities or lack of experience and knowledge or people unfamiliar with these instructions to use the machine, local regulations may restrict the age of the operator.

Training

- a) Read the instructions carefully. Be familiar with the controls and the correct use of the machine.
- b) Never allow children or people unfamiliar with these instructions to use the machine. Local regulations can restrict the age of the operator.
- c) Keep in mind that the operator or user is responsible for accidents or hazards occurring to other people or their property.

Preparation

- a) Before use, check the supply and extension cord for signs of damage or aging. If the cord becomes damaged during use, disconnect the cord from the supply immediately. **DO NOT TOUCH THE CORD BEFORE DISCONNECTING THE SUPPLY.** Do not use the machine if the cord is damaged or worn.
- b) Before use, always visually inspect the machine for damaged, missing or misplaced guards or shields.
- c) Never operate the machine while people, especially children, or pets are nearby.

Operation

- a) Keep supply and extension cords away from cutting means.
- b) Wear eye protection and stout shoes at all times while operating the machine.
- c) Avoid using the machine in bad weather conditions especially when there is a risk of lightning.
- d) Use the machine only in daylight or good artificial light.
- e) Never operate the machine with damaged guards or shields or without guards or shields in place.
- f) Switch on the motor only when the hands and feet are away from the cutting means.
- g) Always remove the battery,
 - whenever the machine is left unattended,
 - before clearing a blockage,
 - before checking, cleaning or working on the machine,
 - after striking a foreign object,
 - whenever the machine starts vibrating abnormally
- h) Take care against injury to feet and hands from the cutting means.
- i) Always ensure that the ventilation openings are kept clear of debris.

Maintenance and storage

- a) Remove the battery pack from the machine before carrying out maintenance or cleaning work.
- b) Use only the manufacturer's recommended replacement parts and accessories.
- c) Inspect and maintain the machine regularly. Have the machine repaired only by an authorized repairer.
- d) When not in use, store the machine out of the reach of children.

Additional safety warnings

- Before you begin your work, examine the materials you want to cut. Do not use the appliance to cut branches, hard wood or others.
- Always check the hedges and bushes for the foreign objects, e.g. wire fence and hidden wiring etc. Remove any foreign objects or Keep a continuous watch out for foreign objects while you are working. If you come across any foreign objects while cutting, turn off the appliance.
- Keep the appliance at a distance from your body while working. Only switch on when all parts of the body are at a secure distance to the appliance.
- When the appliance is not in use, make sure that it is stored in such a way that there is not risk of hands coming into contact with the cutting means.
- If the cutting means get jammed while cutting, turn off and remove the objects in question with a suitable blunt aid. Never remove them with your fingers. There is a risk of cut.
- Never attempt to remove the cuttings with the motor running or to hold the material you wish to cut. Always switch off before attempting to remove any jammed cuttings.
- Always fit the protective cover on the cutting blade when transportation and storing the combi-shears.
- Never operate the machine while people, especially children or pets are nearby.
- Not to overreach and keep balance at all times. Always be sure of footing on slopes, walk never run.
- Never touch the moving hazardous parts before removing the battery.
- Always wear substantial footwear and long trousers while operating.
- Never operate the machine with the defective guards or shields, or without safety devices.
- Avoid using the machine in bad weather conditions especially when there is a risk of lightning.

Special safety instructions for battery-operated tools

- a) Ensure that the tool is switched off before inserting the battery. Inserting a battery into a tool that is switched on may result in accidents.
- b) Recharge the batteries indoors only because the battery charger is designed for indoor use only. Risk of electric shock.
- c) To reduce the electric shock hazard, unplug the battery charger from the mains before cleaning the charger.

- d) Do not subject the battery to strong sunlight over long periods and do not leave it on a heater. Heat damages the battery and this is risk of explosion.
- e) Allow a hot battery to cool before charging.
- f) Do not open up the battery and avoid mechanical damage to the battery. Risk of short circuit and fumes may be emitted that irritate the respiratory tract. Ensure fresh air and seek medical assistance in the event of discomfort.
- g) Do not use non-rechargeable battery. This could damage the appliance.
- h) The recommended ambient temperature range for the charging system during charging is from 4°C to 40 °C.
- i) The recommended ambient temperature range for tool and battery storage is from 0°C to 50 °C.
- j) The recommended ambient temperature range for tool and battery use is from -5°C to 50 °C.
- k) Remove the battery from the device before storage.
- l) Electrolyte leaking from the cells can cause damage to the skin, clothes or any other items exposed to it. If the electrolyte contacts the skin or clothes, wash thoroughly with clean water. If the electrolyte enters into the eyes, do not rub the eyes but flush them immediately with copious amounts of clean water such as tap water, and immediately consult a doctor.
- m) Do not disassemble or modify the battery, which can cause short-circuiting between cells or between the cell and its wiring, and disables the battery's safety protection system. These can lead to electrolyte leakage, overheating or a cell or battery, bursting and fire.
- n) Avoid casual or inadvertent shorting of a battery with metallic objects such as: wire, tools, neckless or hairpins, which can cause short-circuiting, which cause excess current flow, electrolyte leakage, heating of cells or batteries, bursting and fire.
- o) Keep battery away from a fire or heat. The insulation materials will melt and the gas release vent and protection system will be damaged, causing electrolyte leakage, bursting and possibly fire.
- p) Not allow the battery to contact with water or gets wet, it may short-circuit, overheat, rust or lose its functions.
- q) Do not expose the battery to mechanical shock, for example, by dropping, throwing or crushing, causing electrolyte leakage, cell and battery heating, bursting and fire.
- r) Avoid the battery to directly connect to electric source such as a car lighter socket, or car battery, which may cause excess current to flow at high voltage and can cause electrolyte leakage, overheating of a cell or battery, bursting and fire.
- s) The type of t battery pack is 151218.01.
- t) Follow the instruction to remove and insert the battery properly.
- u) The rechargeable battery pack should be removed from the appliance before being charged.
- v) The battery pack should be inserted with the correct polarity.
- w) The exhausted battery pack should be removed from the appliance and safely disposed of.
- x) If the appliance is to be stored unused for a long period, the battery pack should be removed.
- y) The supply terminals are not to be short-circuited.

Safety instructions for charger

- This charger can be used by children aged from 8 years and above and persons with reduced physical, sensory or mental capabilities or lack of experience and knowledge if they have been given supervision or instruction concerning use of the charger in the safe way and understand the hazards involved. Children shall not play with the charger. Cleaning and user maintenance of the charger shall not be made by children without adult supervision.
- If the supply cord is damaged, it must be replaced by the manufacturer, its service agent or similarly qualified persons in order to avoid a hazard.
- Only use this saker charger to charge the battery pack
- To charge the battery, use only the charger supplied.
- Never charge non-rechargeable batteries.
- During charging the batteries must be placed in a well-ventilated area.

Vibration and noise reduction

To reduce the impact of noise and vibration emission, limit the time of operation, use low-vibration and low noise operating modes as well as wear personal protective equipment. Take the following points into account to minimize the vibration and noise exposure risks:

- Only use the product as intended by its design and these instructions.
- Ensure that the product is in good condition and well maintained.
- Use correct attachments for the product and ensure they are in good condition.
- Keep tight grip on the handles surface.
- Plan your work schedule to spread any high vibration tool use across a longer period of time.

Residual Risk

Even if properly operating and handling this product in accordance with all the safety requirements, potential risks of injury and damage remain. Due to its construction and build, this tool may present the following hazards:

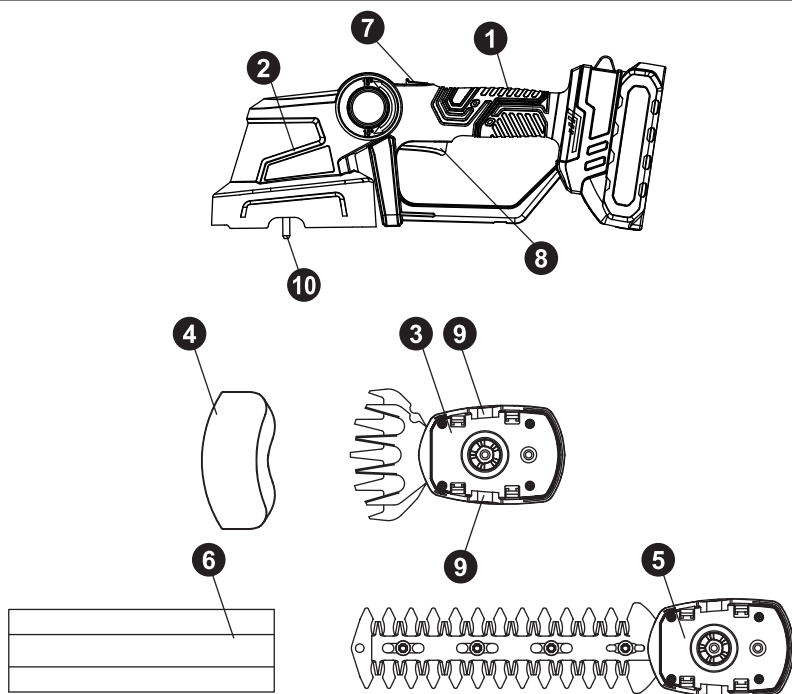
- a) Cuts
- b) hearing damage if working without hearing protection.
- c) There is a risk of a short-circuit due to liquid penetrating the housing. Do not immerse the product and the accessories in water. And make sure that no water or other liquid can enter the housing.
- d) Damage to your health caused by swinging your hands and arms when operating the tool for longer periods of time or if the tool is not held or maintained properly.



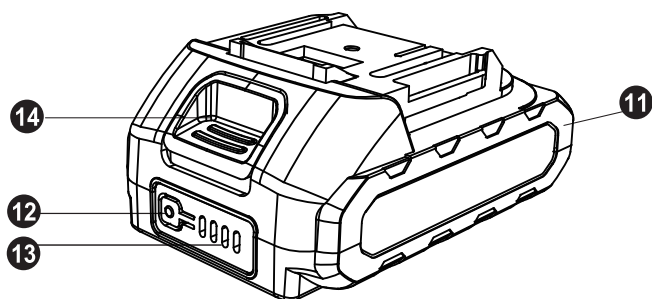
Warning!

During operating, the product generates an electromagnetic field which, under certain circumstances, may impair the functionality of active or passive medical implants. To reduce the risk of serious or lethal injuries, we recommend that persons with medical implants consult their doctor and the manufacturer of their medical implant before operating the electric tool.

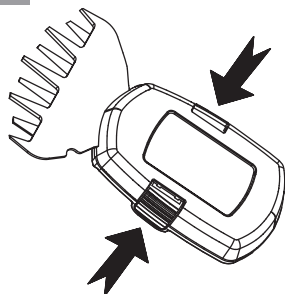
A



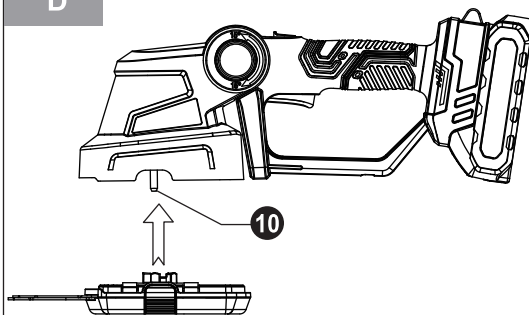
B



C



D



Overview (Fig.A-B)

1. Handle
2. Device head
3. grass shear unit with cutting blade
4. Blade cover of grass shear
5. Trimmer unit with cutting blade
6. Blade cover of trimmer
7. Safety lock-off
8. On/off switch
9. Blade release button
10. Plug-in connector
11. Battery pack
12. Battery charge level button
13. Battery level indication (LED)
14. Battery release button

BEFORE USE

Unpacking

1. Unpack all parts and lay them on a flat stable surface.
2. Make sure the delivery contents are complete and free of damage. If you find that parts are missing or show damage, do not use the product but contact customer@smartsaker.com. Do not use the product unless missing parts have been delivered in addition or defective parts have been replaced. Using an incomplete or damaged product represents a hazard to people and property.
3. Ensure that you have all the accessories needed for assembly and operation.

Charging the battery pack (Fig. B)

Note:

- The battery can be damaged in case of improper charging.
- Remove the charger's mains plug before inserting or removing the battery.

The battery is partially charged upon delivery to avoid damage to the battery caused by a deep discharge. Prior to initial start-up and when the battery is low, the battery should be charged.

Removing /Inserting the battery

1. To remove the battery pack (11) from the tool, press the battery release button (14) on the battery pack (11) and pull the battery out.
2. To insert the battery pack (11), place it on a guide track and push it back into the tool. It will audibly snap in.

Checking the battery charging level

The battery comes with an integrated battery level indication.

The battery status is displayed as follows by the three LEDs of the battery level indication (LED) (13):

LED color	Meaning
Light up 3 green LEDs	Maximum charge/power
Light up 2 green LEDs	Medium charge / power
Light up 1 green LEDs	Weak charge – Recharge the battery

Press on the battery charge level button (12) on the battery pack (11). You can read the battery status from the battery level indication (LED) (13).

Attaching/Replacing cutting blade



WARNING! Risk of injury. Always switch the appliance off and remove the battery pack before attaching or replacing the cutting blade.

Attaching

1. Press and hold the blade release buttons (9) on both sides of the grass shear or trimmer unit (3 or 5) (Fig.C)
2. Slowly approach the grass shear (3) or trimmer (5) unit onto the plug-in connector (10) on the bottom side of the device head (2) (Fig.D).
3. Push the grass shear (3) or trimmer (5) unit into the direction of the device head (2). It will lock into place audibly.

Replacing

1. Press the blade release buttons (9) on the both sides of the c grass shear or trimmer unit (3 or 5) and remove the unit.
2. Put on the desired cutting blade unit as described in “Attaching the cutting blade”.

OPERATION

Note: Comply with regulations regarding noise protection and local rules. Using the appliance on certain days (e.g. on Sundays and public holidays) during certain times (midday period night time) or in certain locations (e.g. health resorts, clinics, etc.) may be restricted or prohibited.

Switching on and off

Note: before using the appliance, the blade cover has to be removed from the cutting blade unit.

Switch ON

1. Push the safety lock-out (7) forward and press the ON/OFF switch (8).
2. Release the safety lock-out (7) now, and hold the ON/OFF switch (8) to run the appliance.

Switch OFF

Release the ON/OFF switch (6) to switch off.

Using the grass shear /trimmer



WARNING!

Ensure objects such as wire, metallic parts, stones etc. not enter the cutting blade while cutting. This can cause damage to the cutting blade. If the blade become jammed with solid objects, turn the appliance off immediately.

- Only use the sharp blade to make sure the good cutting performance.
- Do not overload the appliance while working to such an extent that it comes to a standstill.

Working as grass shear

- The best results are achieved when the grass is dry.
- Guide the grass shear above the ground

Working as trimmer

- Move the trimmer in a steady forward motion, or up and down in an arch-shaped motion.
- The double-sided blade bar enables trimming in both directions via pendulum movements from one side to the other.

CLEANING AND MAINTENANCE



WARNING!

Risk of injury. Always switch the appliance off and remove the battery pack before carrying out any work on the appliance.

- Before and after each use, Check the cutting blade units and blade cover for damage and correct position. If necessary, replace for new one.
- The appliance including the cutting blade units must always be kept clean, dry and free from oil or grease.
- Use a soft, a slightly moist cloth to clean the appliance.
- Always clean the appliance after completion of work.
- Always keep the blade clean and the blunt, bent or damaged blades must be changed
- Remove debris carefully from the blade after each use.
- Never permit any liquids to enter inside the appliance. Never use petrol, solvents or cleansers which can damage the plastic.
- If the battery is to be stored for an extended period, the charge level should be checked regularly. The optimum charge level is between 50% and 80%. The optimum storage environment is cool and dry.

STORAGE AND TRANSPORTATION



WARNING!

Risk of injury. Always switch the appliance off and remove the battery pack before storage and transportation.

Storage

1. Switch the appliance off and remove the battery pack.
2. Always allow the appliance to cool down.
3. Clean the appliance as described.
4. Store the appliance and its accessories in a dark, dry, frost-free, well-ventilated place.
5. Always store the appliance in a place that is inaccessible to children.
6. During a longer storage period, check the state of charge of the battery and recharge if necessary roughly every 3 months.
7. We recommend using the original package for storage or covering the product with a suitable cloth or enclosure to protect it against dust.
8. Regularly check the charge level of the battery pack, if it is to be stored for an extended period. Optimum storage conditions are cool and dry.
9. Always put on the blade cover when storage.

Transportation

1. Switch the appliance off and remove the battery pack.
2. Always carry the appliance by its handle.
3. Protect the appliance from any heavy impact or strong vibrations which may occur during transportation in vehicles.
4. Secure the appliance to prevent it from slipping or falling over.
5. Always put on the blade cover when transportation.

SPARE PARTS /ACCESSORIES



WARNING!

Only use accessories and additional equipment specified in the operating manual. Using spare parts or accessories other than those specific in the operating manual may cause a risk of injury. Please contact us via email: customer@smartsaker.com

TROUBLESHOOTING



WARNING

Only perform the steps described within these instructions. Suspected malfunctions are often due to causes that the users can fix themselves. Therefore, check the product using this section. In most cases the problem can be solved quickly.

If you have any doubt or query, please contact us. customer@smartsaker.com

Problem	Possible cause	Corrective action
it won't start	Battery pack discharged	Recharge the battery
	Battery pack not inserted	Insert the battery pack
	ON/OFF switch cannot be pressed properly or defective	Send to the service center for repair
Different charging time	The battery pack is only partly charged	Re-charge the battery pack
	The charger broke	Check the charger, if the charger is damaged, contact Service Centre.
	Battery pack is very cold or hot	Allow the battery pack to return the normal ambient temperature, then recharge
Uneven cut or bad cutting result	blade blunt or damaged	Please replace the new one on SAKER's official website.

Note: If your product does not operate correctly after these checks, please contact customer@smartsaker.com

DISPOSAL



To help the environment, please dispose of the product properly when it has reached the end of its useful life and not in the household waste. Information on collection points and their opening hours can be obtained from your local authority.



Li-ion

Environmental damage through incorrect disposal of the batteries / rechargeable batteries.

Remove the battery pack from the product before disposal. Batteries /rechargeable batteries may not be disposed of with the usual domestic waste. They may contain toxic heavy metals and are subject to hazardous waste treatment rules and regulations. Please dispose of batteries according to the relevant local requirements.

WARRANTY

The Warranty for this product is 1 years from the date of purchase. Should this product fault in materials or manufacture within 1 years from the date of purchase.

Please keep your original receipt as your proof of purchase. This warranty becomes void if the product has been damaged or used or maintained improperly.

The warranty applies to defects in material or manufacture, does not cover product parts subject to normal wear.

Thank you for choosing Saker.

If you have any doubt or query, please contact us.



SAKERPLUS

OFFICIAL WEBSITE
www.sakerplus.com



CONTACT US AT: cs@sakerplus.com



FACEBOOK: <https://www.facebook.com/Sakerplusbrand>



RoHS



128g铜版纸，正反面印刷