

RX

RX 350 / RX 350L / RX 450h



THE NEW RX

PROGRESSIVE SOPHISTICATION

The pioneer in luxury SUVs, the RX continues to evolve and lead. Driven by its DNA to actively undertake fresh challenges, its sophisticated design, performance, and advanced technologies provide fresh value to enrich modern lifestyles.



SOPHISTICATION WITH A NEW ATTITUDE

Deepening the 'Progressive Sophistication' design concept that fuses sophistication and aggression, the smooth curves of the exterior shape a captivating presence, while optimizing the packaging in the spacious cabin and luggage space for which the RX is renowned.

A passion for sporty performance drove a focus on enhancing body rigidity, honing the RX's dynamic responsiveness and intuitive handling and control—qualities you'll appreciate in everyday driving, and savor even more on the open road.



THE RX 350L : UNIQUE VERSATILITY WITHOUT COMPROMISE

The RX 350L changes to suit your needs, whether you require comfortable third row seats for extra passengers or a spacious luggage compartment. Theater-style seating provides a slightly higher eye point in each successive row so that all occupants enjoy excellent visibility and a satisfying open feeling.

The second row seats slide forward to provide ample legroom when the third row seats are occupied. The power folding 50/50 split third row seats fold away independently, providing extra luggage space to accommodate changing passenger and luggage combinations. The RX 350L provides a flat, gap-free luggage space, regardless of whether the third row seats are in use or stowed. The tonneau cover stores under the luggage space floor to provide ample room for luggage even when carrying seven people. Both the second row and third row seats have a split seatback design to enable different luggage configurations.

The power folding third row seats are controlled by switches in the passenger side trim of the second row seats and in the left side of the luggage space.*

*Second row seats fold manually.

EXTERIOR & INTERIOR COLORS

The refined elegance of intriguing exterior colors and distinctive trim combinations exude a seductive and glamorous depth, giving personal expression to your enjoyment of 'Progressive Sophistication'.

<RX 350 / RX 350L>



Sonic Quartz



Amber Crystal Shine

<RX 350 F SPORT>



White Nova Glass Flake



Heat Blue Contrast Layering

<RX 350 / RX 350 F SPORT / RX 350L / RX 450h>



Sonic Titanium



Black



Graphite Black Glass Flake



Red Mica Crystal Shine



Ice Ecru Mica Metallic



Terrane Khaki Mica Metallic



Deep Blue Mica

<SMOOTH LEATHER (RX 350 / RX 350L) / SEMI-ANILINE LEATHER (RX 450)>



Ivory



Black



Ocher



Noble Brown



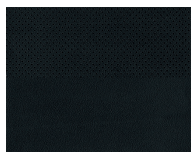
Rich Cream



White Ash



Ivory



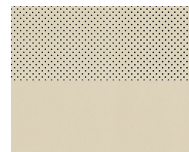
Black



Ocher



Noble Brown



Rich Cream



White Ash

<SMOOTH LEATHER (RX 350 F SPORT)>



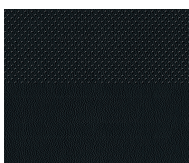
Black



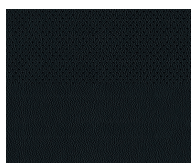
Black & White



Flare Red



Black

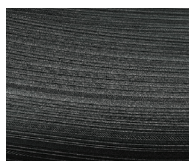


Black & White



Flare Red

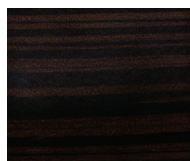
<TRIMS>



3D Film
(RX 350 / RX 350L)



Aluminum
(RX 350 F SPORT)



Shimamoku
(RX 450h)

Note: Vehicles pictured and specifications detailed in this catalog may vary from models and equipment available in your area. Please inquire at your local dealer for details on the availability of features.

MAIN FEATURES <RX 350 / RX 350L / RX 450h> PHILIPPINES

EXTERIOR

- Windshield Glass: Acoustic Glass, UV-Cut Function
- Front Door, Rear Door, Back Door, and Rear Quarter Window Glass: UV-Cut Function
- Moonroof: Power Tilt/Slide, One-Touch Mode with Jam Protection System <RX 350 F Sport / RX 450h>
- Door Mirrors: LED Side Turn Signal Lamp, Auto Folding, Interlink with Reverse Gear
- Door Handles: Foot Area Illumination

INTERIOR

- Optitron Meters
- 4.2-Inch Color Thin Film Transistor (TFT) Multi-Information Display
- Analog Clock
- Vanity Mirrors and Lamps (Front Seats)
- Overhead Console LED Lamp Switches: Touch-Type
- Center Console Box
- Power Outlets: 1 in Center Cluster, 1 in Center Console Box, 1 in Side of Luggage Space
- Cupholders (Front and Second or Outboard Second/Third Row Seats): Height Adjustment for Front Cupholders
- Door Pockets (Front and Rear Doors): Bottle Holders
- Console Pocket (Front Passenger Side)
- Smartphone Holder
- Manual Rear Door Window Sunshade
- Ambient Illumination
- Illuminated Scuff Plates
- Tonneau Cover
- Auto Air Conditioning System: S-FLOW Control, Independent Temperature Controls for Front Seats, Clean Air Filter

OPERATION

- Power Tilt and Telescopic Steering Column: Auto-Away/Auto-Return Function
- Steering Wheel Control Switches
- Multi-Mode Automatic Transmission <RX 350 / RX 350 F Sport / RX 350L>
- Continuously Variable Transmission (CVT) <RX 450h>
- Drive Mode Select with Custom Mode
- Position Memory Switches: 3-Memory (Driver Seat) <RX 350 / RX 350L>
- Position Memory Switches: 3-Memory (Driver & Front Passenger Seats) <RX 450h>
- Cruise Control
- Smart Entry & Start System
- Card Key
- Parking Assist Monitor
- Lexus Parking Assist-Sensor
- Power Back Door: Close & Lock Switch

NAVIGATION & AUDIO

- Lexus Navigation System <RX 350 F Sport / RX 450h>
- 8-Inch Lexus Display Audio: Remote Touch Interface <RX 350 / RX 350L>
- 12.3-Inch Electro Multi-Vision (EMV) Touch Display: Remote Touch Interface <RX 350 F Sport / RX 450h>
- Lexus RX Premium Sound System: AM/FM Radio, In-Dash DVD player, 9 Speakers <RX 350 / RX 350L>, 12 Speakers <RX 350 F Sport>, MP3 and Windows Media Audio (WMA) Play Compatible, Digital Signal Processor (DSP), Automatic Sound Levelizer (ASL) Apple Car Play, Android Auto
- Mark Levinson Premium Surround Sound System: AM/FM Radio, In-Dash DVD player, 15 Speakers, MP3 and Windows Media Audio (WMA) Play Compatible, Digital Signal Processor (DSP), Automatic Sound Levelizer (ASL), Clar-Fi, Quantum Logic Surround (QLS) Apple Car Play, Android Auto <RX 450h>
- Bluetooth Function: Hands-Free Calling, Wireless Connection with AV-Profile Compliant Player
- 2 USB Ports/Mini-Jack (Center Console Box)
- 2 USB Charging Ports (Center Console, Rear of Center Console Box)

SEATS

- 8-Way Power Front Seats: 2-Way Power Lumbar Support <RX 350 / RX 350 F Sport / RX 350L>
- 10-Way Power Front Seats: Adjustable Seat Cushion Length, Ventilated Seats, 4-Way Lumbar Support <RX 450h>
- Power Second Row Seats: Reclining and Folding <RX 350 F Sport / RX 450h>
- 60/40 Split, Folding Second Row Seatbacks <RX 350 / RX 350L>

SAFETY & SECURITY

- Vehicle Dynamics Integrated Management (VDIM) <RX 350 F Sport / RX 450h>
- Parking Support Alert (PKSA)
- Drive-Start Control
- Traction Control System (TRC)
- Vehicle Stability Control (VSC)
- Anti-Lock Brake System (ABS) with Electronic Brakeforce Distribution (EBD)
- Brake Assist System
- Hill-Start Assist Control
- 3-Eye Bi-Beam LED Headlamps: Auto-Leveling System <RX 350 F Sport / RX 450h>
- Bi-Beam LED Headlamps: Auto-Leveling System <RX 350 / RX 350L>
- LED Sequential Turn Lamps <RX 350 F Sport / RX 450h>
- LED Daytime Running Lamps (DRL)
- LED Front Fog Lamps
- LED Rear Fog Lamp
- LED Wide-Angle Cornering Lamps
- Automatic Anti-Glare Mirrors (Interior and Door Mirrors)
- Dual-Stage SRS Airbags (Front Seats)
- SRS Knee Airbags (Driver's Seat)
- SRS Cushion Airbags (Front Passenger's Seat)
- SRS Side Airbags (Front and Outboard Second Row Seats)
- SRS Curtain Shield Airbags (Front and Rear Door Windows)
- 3-Point ELR Seatbelts (All Seats)
- Pretensioners and Force Limiters (Front and Outboard Second Row Seats)
- Anchor bars for fixing ISOFIX-Compliant Child Seat (Outboard Second Row Seats, Left Third Row Seat)
- Security System: Siren, Intrusion Sensor, Inclination Sensor, Immobilizer System

EXCLUSIVE TO RX F SPORT

- Exclusive front and rear bumpers, front mesh grille, door mirrors, front fender emblems, aluminum wheels
- Exclusive front seats, trim, steering wheel, shift levers, meters, aluminum pedals and scuff plates

EXCLUSIVE TO RX L

- Roof Rail
- 50/50 Split, Power Folding Third Row Seats

EXCLUSIVE TO RX HYBRID

- Hybrid Sequential Shift Matic
- Wireless Charger
- Power Back Door: Kick Motion Sensor, Close & Lock Switch

SPECIFICATIONS <RX 350 / RX 350L / RX 450h> PHILIPPINES

DIMENSIONS & WEIGHT

Overall length:	5,000 mm <RX 350L> 4,890 mm <RX 350 / RX 450h>
Overall width:	1,895 mm
Overall height:	1,700 mm <RX 350L> 1,685 mm <RX 350 / RX 450h>
Wheelbase:	2,790 mm
Tread: Front	1,640 mm
Rear	1,560 mm
Weight	
Curb weight:	2,105-2,210 kg <RX 450h> 2,090-2,150 <RX 350L> 1,980-2,085 <RX 350 4WD> 1,905-2,010 kg <RX 350 2WD>
Gross vehicle weight:	2,715 kg <RX 450h> 2,720 kg <RX 350L> 2,575 kg <RX 350 4WD> 2,500 kg >RX 350 2WD<

CHASSIS

Suspension (Front):	MacPherson Strut Type
Suspension (Rear):	Double Wishbone Type
Steering System:	Rack and Pinion. Electronic Power Steering (EPS)
Brakes:	Front 328 mm Ventilated Discs Rear 338 mm Ventilated Discs
Minimum Turning Radius (Tires)	5.9 m
Fuel tank capacity:	72 L <RX 350L / RX 350> 65 L <RX 450h>
Tires	235/55R20

<RX 350L / RX 350>

ENGINE

Type:	3.5-Liter V6 Four Cam 24-Valve (2GR-FXS, Unleaded)
Piston Displacement:	3,456 cc
Max. Output:	296 hp / 6,300 rpm (EEC net)
Max. Torque:	370 Nm / 4,600-4,700 rpm
Fuel System:	D-4S (Direct-Injection 4-Stroke Gasoline Engine Superior Version)

<RX 450h>

ENGINE

Type:	3.5-Liter V6 Four Cam 24-Valve (2GR-FXS, Unleaded)
Piston Displacement:	3,456 cc
Max. Output:	259 hp / 6,000 rpm (EEC net)
Max. Torque:	335 Nm / 4,600 rpm
Fuel System:	D-4S (Direct-Injection 4-Stroke Gasoline Engine Superior Version)

MOTORS <RX 450h>

Front Motor

Type:	Permanent Magnet Motor (6JM)
Max. Output:	165 hp
Max. Torque:	335 Nm

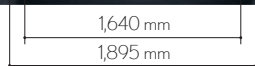
Rear Motor

Type:	Permanent Magnet Motor (2FM)
Max. Output:	67 hp
Max. Torque:	139 Nm

Total System Output: 308 hp

BATTERY <RX 450h>

Type:	Sealed Ni-MH (Nickel-Metal Hydride)
Modules:	30
Connection Method:	Series
Capacity:	6.5 Ah



1,700 mm <RX 350L>
1,685 mm <RX 350 / RX 450h>



- Addition of extra features may change figures in this chart.
- Lexus reserves the right to alter any details of specifications and equipment without notice.
- Please inquire at your local dealer for details on the availability of features.
- Vehicle body color might differ slightly from the printed photos in this catalog.

