

## Important safety instructions! Please read before connection!



### **DANGER! (Electrical shock due to high voltages in the device)**

The housing must not be removed! There are **no** parts to be maintained in the device. Inside the unit there are components which are under high electrical voltage.

Before each use, check the device for damage or the absence of components, protective devices or housing parts. If this is the case, the device must not be used!

Leave maintenance and repair work to a qualified service workshop or contact your dealer. In the case of a malfunction of the device, operation must also be stopped immediately until the device has been repaired by a specialist!



### **DANGER! (Electric shock due to short circuit)**

Modifications to the power cord or plug are prohibited. If the power cord is damaged, it must be replaced immediately with an original spare part from the manufacturer. Failure to do so may result in fire or death due to electric shock!



### **DANGER! (For babies and children)**

Dispose of or store any packaging material properly! Packaging material must be kept out of the reach of babies and children due to the **risk of suffocation**.

Ensure that children never use the appliance unattended! In addition, make sure that children do not remove (small) parts from the device, as they could suffocate by swallowing parts!



### **WARNING! (High light intensity - eye injuries)**

A direct view into the light source is absolutely to be omitted!



### **WARNING! (Epilepsy)**

Stroboscopic effects (flashes of light) can trigger seizures of epilepsy in some people. Accordingly sensitive people should be warned and should not be in the vicinity of such devices.



### **Hint! (Fire hazard due to overheating)**

The maximum permissible ambient temperature of this device is **40°C**.

Ensure that the unit is placed in a well-ventilated location away from direct heat sources, naked flames, combustible materials, and liquids. A minimum distance of 1 m is required.

Do not tape or cover the ventilation slots of the unit.

**Hint! (Operating conditions)**

Due to its structural characteristics, the device is designed for indoor operation (IP20). Never expose the device to rain, moisture or liquids as this may cause damage.

Vibrations, dust or sunlight can also cause damage, avoid them!

**Hint! (Power supply)**

It is essential that you check that the device voltage matches your local mains voltage. It is highly recommended that you fuse your mains socket with a residual current circuit breaker (FI).

If you do not use your device for a longer period of time or carry out maintenance work, disconnect the device from the mains in order to minimize danger. The same applies to storm conditions such as thunderstorms, floods, etc.

**Hint! (Error during data transmission)**

Never connect the DMX input or output to audio devices such as power amplifiers or mixing consoles!

DMX cables enable trouble-free operation and the highest possible transmission reliability of signal data. Do not use microphone cables!

**Hint! (Condensation)**

To avoid condensation in the unit, the unit should adapt to the ambient temperature before commissioning.

**Hint! (Unwanted odours)**

A new product can sometimes lead to unwanted odours. This reaction is normal and disappears after a few minutes.

**Symbols on device and packaging:**

The lightning flash symbol warns the user of uninsulated voltages and the risk of electric shock.



The exclamation mark symbol draws the user's attention to important maintains and operating instructions in the manual.



Only suitable for indoor use.



This symbol defines the minimum distance of the object to be illuminated.



Read the manual

**Please read and follow the warnings and recommendations carefully to ensure safe and trouble-free use.**

**Installation:**

Be sure to check the unit for damage before use. Use the original packaging or a suitable transport or storage packaging to protect the product from dust, moisture, etc. when not in use.

The unit can be installed either upright or suspended. The device must always be attached to a solid, approved carrier or a suitable surface. Note the load limit of the selected installation position (e.g. for tripods).

The opening of the bracket must be used to fasten the device. Always provide a second, independent safety backup for the device, e.g. with a safety cable.

Work on the device (e.g. assembly) should always be carried out from a stable and permissible platform. Make sure that the area below you is closed off.

**WARNING! (Risk of injury due to falling down)**

Improper installation can cause considerable injury and damage!

The installation of the device should always be carried out by experienced personnel and must be carried out in compliance with the mechanical and electrical safety regulations in your country.

**Please note that it is not possible to use this device with a dimmer!**

## **Congratulations on your new lightmaXX Vector Spot Zoom 2.0!**

Thank you for choosing a **lightmaXX** product. Through efficient development and economical production, **lightmaXX** enables high quality products at a fantastic price.

Please read the instruction manual carefully to learn about all the features of this product and keep it for future use.

Have fun with your new product!

### **Your lightmaXX Team**

#### **Guarantee:**

The current general terms and guarantee conditions of the Music Store professional GmbH apply.

You can view it at: [www.musicstore.de](http://www.musicstore.de)

If you have any questions or suggestions, please contact us:

#### **Music Store professional GmbH**

Istanbulstr. 22-26

51103 Cologne

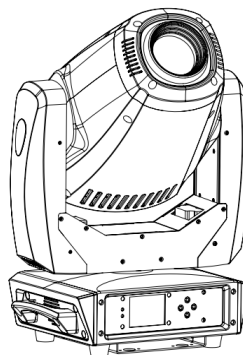
Managing Director: Michael Sauer

WEEE-Reg.-No. DE 41617453

Tel: +49 221 8884-0

Fax: +49 221 8884-2500

[info@musicstore.de](mailto:info@musicstore.de)



#### **Scope of delivery:**

| Content                        | Quantity |
|--------------------------------|----------|
| lightmaXX Vector Spot Zoom 2.0 | 1        |
| Omega Bracket                  | 2        |
| Power cord                     | 1        |
| Manual                         | 1        |

#### **Intended use:**

The **lightmaXX Vector Spot Zoom 2.0** was designed for use as an electronic LED lighting effect. The device may only be used for this purpose and in accordance with the operating instructions. Other purposes as well as operation under other operating conditions are expressly not intended and can lead to damage to property or personal injury! No liability is assumed for damage resulting from improper use.

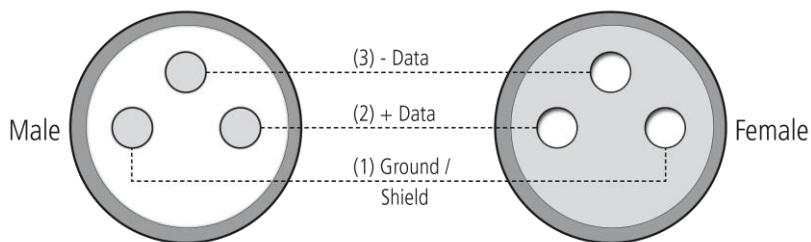
It must be ensured that the device is operated exclusively by trained and competent users who are in full possession of their mental, physical and sensory abilities. The use of other persons is expressly only permitted at the request of a person responsible for their safety, who instructs or supervises the use.

## Set up:

All connections of the device should be made before switching on. Only use high-quality cables that are as short as possible for the connections.

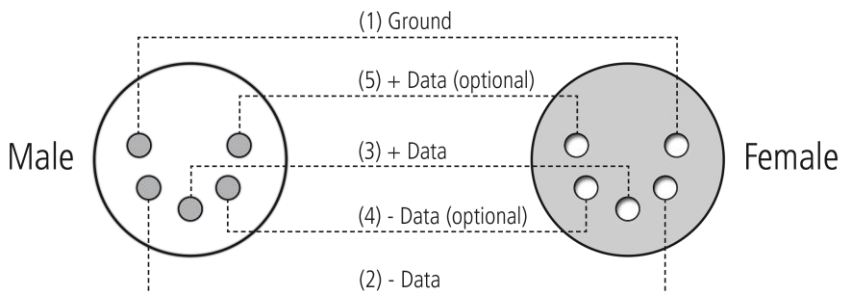
### Configuration of the DMX connector:

#### 3 pin:



Resistance 120 ohm // ¼ w between pin 2 (DMX-) and pin 3 (DMX+) of the last fixture.

#### 5 pin:



## Operating mode DMX:

Connect the DMX input of your device to the DMX output of your DMX controller, your DMX software or the DMX output of a device already in your DMX line. Always use a DMX cable with a 110 Ohm resistor for this connection. Address the device according to your DMX configuration. The following table shows the respective DMX modes of the individual devices with the corresponding values and functions:

**6-Channel-Mode**

| Channel  | Value   | Function   |
|----------|---|--|
| <b>1</b> | 000-255   | X  |
| <b>2</b> | 000-255   | Y  |
| <b>3</b> | 000-255   | Dimmer (0-100%)  |
| <b>4</b> | 000-004<br>005-250<br><br>251-255   | Shutter closed<br>Strobe Effect<br>(Speed: slow to fast)<br>Shutter open   |
| <b>5</b> | 000-007<br>008-047<br>048-087<br>088-127<br>128-167<br>168-207<br>208-247<br>248-255                                  | No function<br>Auto Play 1<br>Auto Play 2<br>Auto Play 3<br>Auto Play 4<br>Auto Play 5<br>Auto Play 6<br>Colour Gobo Sound Control   |
| <b>6</b> | 000-007<br>008-032<br>033-058<br>059-084<br>085-110<br>111-136<br>137-162<br>163-188<br>189-214<br>215-240<br>241-255 | No function<br>X/Y Auto Run 1<br>X/Y Auto Run 2<br>X/Y Auto Run 3<br>X/Y Auto Run 4<br>X/Y Auto Run 5<br>X/Y Auto Run 6<br>X/Y Auto Run 7<br>X/Y Auto Run 8<br>X/Y Auto Run 9<br>X/Y Sound Control |

**18-Channel-Mode**

| Channel  | Value   | Function                               |
|----------|---------|--|
| <b>1</b> | 000-255 | Dimmer (0-100%)                        |
| <b>2</b> | 000-004 | Shutter closed                         |
|          | 005-250 | Strobe Effect<br>(Speed: slow to fast) |
|          | 251-255 | Shutter open                           |
| <b>3</b> | 000-255 | X                                      |
| <b>4</b> | 000-255 | X-Fine                                 |
| <b>5</b> | 000-255 | Y                                      |
| <b>6</b> | 000-255 | Y-Fine                                 |
| <b>7</b> | 000-255 | XY Speed                               |
| <b>8</b> | 000-004 | Open (White)                           |
|          | 005-013 | White/Colour 1                         |
|          | 014-022 | Colour 1                               |
|          | 023-031 | Colour 1/Colour 2                      |
|          | 032-040 | Colour 2                               |
|          | 041-049 | Colour 2/Colour 3                      |
|          | 050-058 | Colour 3                               |
|          | 059-067 | Colour 3/Colour 4                      |
|          | 068-076 | Colour 4                               |
|          | 077-085 | Colour 4/Colour 5                      |
|          | 086-094 | Colour 5                               |
|          | 095-103 | Colour 5/Colour 6                      |
|          | 104-112 | Colour 6                               |
|          | 113-121 | Colour 6/Colour 7                      |
|          | 122-130 | Colour 7                               |
|          | 131-139 | Open (White)                           |
|          | 140-195 | Forward Rainbow Effect (slow to fast)  |
|          | 196-199 | Rotation Stop                          |
|          | 200-255 | Backward Rainbow Effect (slow to fast) |
| <b>9</b> | 000-007 | Open (White)                           |
|          | 008-017 | Gobo 1                                 |
|          | 018-027 | Gobo 2                                 |
|          | 028-037 | Gobo 3                                 |
|          | 038-047 | Gobo 4                                 |
|          | 048-057 | Gobo 5                                 |
|          | 058-067 | Gobo 6                                 |
|          | 068-077 | Gobo 7                                 |
|          | 078-087 | Gobo 1 Shake                           |
|          | 088-097 | Gobo 2 Shake                           |
|          | 098-107 | Gobo 3 Shake                           |
|          | 108-117 | Gobo 4 Shake                           |
|          | 118-127 | Gobo 5 Shake                           |

|           |  |   |
|-----------|--|---|
|           | 128-137<br>138-147<br>148-199<br>200-203<br>204-255  | Gobo 6 Shake<br>Gobo 7 Shake<br>Forward Rainbow Effect (slow to fast)<br>Rotation Stop<br>Backward Rainbow Effect (slow to fast)  |
| <b>10</b> | 000-007<br>008-017<br>018-027<br>028-037<br>038-047<br>048-057<br>058-067<br>068-077<br>078-087<br>088-097<br>098-107<br>108-117<br>118-127<br>128-137<br>138-147<br>148-199<br>200-203<br>204-255 | Open (White)<br>Gobo 1<br>Gobo 2<br>Gobo 3<br>Gobo 4<br>Gobo 5<br>Gobo 6<br>Gobo 7<br>Gobo 1 Shake<br>Gobo 2 Shake<br>Gobo 3 Shake<br>Gobo 4 Shake<br>Gobo 5 Shake<br>Gobo 6 Shake<br>Gobo 7 Shake<br>Forward Rainbow Effect (slow to fast)<br>Rotation Stop<br>Backward Rainbow Effects (slow to fast) |
| <b>11</b> | 000-007<br>008-129<br>130-133<br>134-255   | Stop<br>Forward Gobo2 Rotation (slow to fast)<br>Stop<br>Backward Gobo2 Rotation (slow to fast)   |
| <b>12</b> | 000-255  | Focus   |
| <b>13</b> | 000-255  | Zoom  |
| <b>14</b> | 000-007<br>008-099<br>100-130<br>131-255   | Open (White)<br>Prism 1<br>Open (White)<br>Prism 2  |
| <b>15</b> | 000-007<br>008-129<br>130-133<br>134-255   | Stop<br>Forward Prism Rotation (fast to slow)<br>Stop<br>Backward Prism Rotation (slow to fast)   |
| <b>16</b> | 000-007<br>008-047<br>048-087<br>088-127<br>128-167<br>168-207<br>208-247<br>248-255   | No function<br>Auto Play 1<br>Auto Play 2<br>Auto Play 3<br>Auto Play 4<br>Auto Play 5<br>Auto Play 6<br>Colour Gobo Sound Control  |
| <b>17</b> | 000-007<br>008-032<br>033-058  | No function<br>X/Y Auto Run 1<br>X/Y Auto Run 2   |



|           |  |   |
|-----------|--|---|
|           | 059-084<br>085-110<br>111-136<br>137-162<br>163-188<br>189-214<br>215-240<br>241-255 | X/Y Auto Run 3<br>X/Y Auto Run 4<br>X/Y Auto Run 5<br>X/Y Auto Run 6<br>X/Y Auto Run 7<br>X/Y Auto Run 8<br>X/Y Auto Run 9<br>X/Y Sound Control |
| <b>18</b> | 001-200<br>201-255   | Speed<br>Reset (10S)  |

### Static, Auto or Sound mode:

The device contains automatic programs that run according to fixed schemes (**Auto**) or are recalled via the built-in microphone to match the music (**Sound**). The selection of the respective mode takes place via the menu directly on the device.

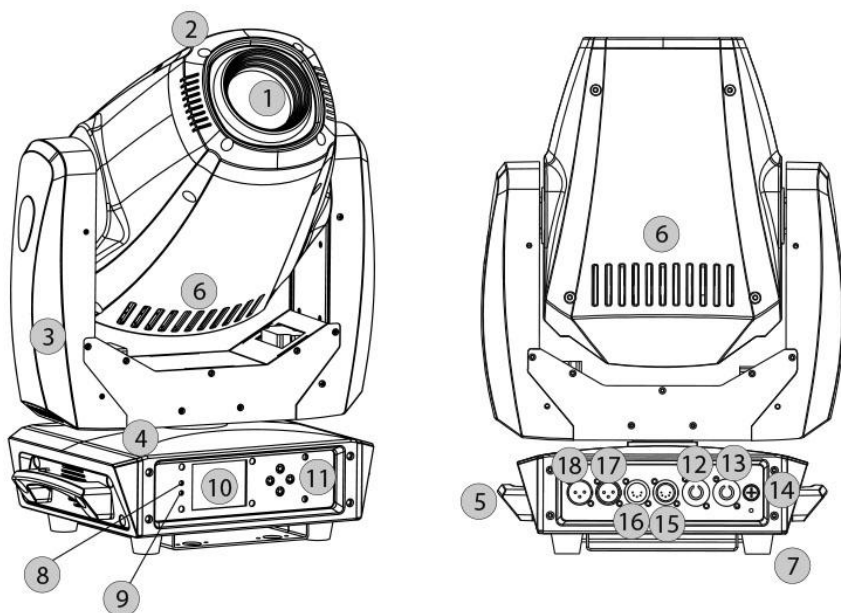
If you connect several devices of the same type via DMX, they can be controlled simultaneously via the master device. To do this, set the desired function "**Master**" on the first device of the line, the other devices of the series must now be set as "**Slave**". Now the first device of the line gives the function to all other devices and all devices run simultaneously.

### Operation:

#### Start:

Connect the device to the mains and wait a few seconds until it is ready for operation.

## Connections and controls:



| No. | Designation       | No. | Designation                       |
|-----|-------------------|-----|-----------------------------------|
| 1   | Lens              | 10  | Display                           |
| 2   | Projector head    | 11  | Menu keys                         |
| 3   | Projector arm     | 12  | Power supply input (Power Twist)  |
| 4   | Base              | 13  | Power supply output (Power Twist) |
| 5   | Carrying handle   | 14  | Fuse holder                       |
| 6   | Ventilation shaft | 15  | DMX Out (5-pole)                  |
| 7   | Rubber base       | 16  | DMX In (5-pole)                   |
| 8   | DMX light         | 17  | DMX Out (3-pole)                  |
| 9   | Error light       | 18  | DMX In (3-pole)                   |

**Menu:**

Navigation in the menu is via the four menu buttons below the display. Use the "**Mode**" button to activate the menu, navigate via the "**Up**" and "**Down**" buttons. A corresponding selection is confirmed with the "**Enter**" key.

## The menu structure in detail:

| Display                 | Submenu  | Value  | Function   |
|-------------------------|--|--|--|
| <b>DMX Address</b>      |  | 001-512<br>DMX 6 Ch<br>DMX 18 CH   | Setting DMX-Address<br>DMX 6 Channel Mode<br>DMX 18 Channel Mode   |
| <b>Operating mode</b>   | Auto   | Perform Mode 1<br>Perform Mode 2<br>Perform Mode 3<br>Perform Mode 4<br>Perform Mode 5<br>Perform Mode 6<br>Perform Mode 7<br>Perform Mode 8 | Program Auto Run   |
|                         | Sound  |  | Sound Control  |
|                         | Master Auto  | Perform Mode 1<br>Perform Mode 2<br>Perform Mode 3<br>Perform Mode 4<br>Perform Mode 5<br>Perform Mode 6<br>Perform Mode 7<br>Perform Mode 8 | Program Auto Run Master Mode   |
|                         | Master Sound   |  | Master Mode Sound Control  |
|                         | Slave  |  | Slave Control  |
|                         | Chinese<br>English   |  | Menu language  |
| <b>Language Setting</b> |  |  |  |
| <b>Advanced Setting</b> | Pan Reverse<br>Tilt Reverse<br>Display Reverse<br>Reset Motor<br>Factory Reset<br>Home Position                                  |  | PAN Reverse<br>TILT Reverse<br>Display Reverse<br>Reset Motor<br>Factory Reset<br>Home Position                                  |
|                         | PAN<br>TILT<br>Dimmer<br>Colour<br>fixed Gobo<br>Rotation Gobo<br>Focus<br>Zoom<br>Prism<br>Rotation Gobo Wheel<br>Mic Sensitive | Code=18<br>. =000<br>. =000<br>. =000<br>. =000<br>. =000<br>. =000<br>. =000<br>. =000<br>. =000<br>= 000                                   | PAN<br>TILT<br>Dimmer<br>Colour<br>fixed Gobo<br>Rotation Gobo<br>Focus<br>Zoom<br>Prism<br>Rotation Gobo Wheel<br>Mic Sensitive |
| <b>System Info</b>      | Current Time<br>Total Time<br>Current Mode<br>Temperature<br>Software Version  |  | Current Time<br>Total Time<br>Current Mode<br>Temperature<br>Software Version  |
| <b>Manual Control</b>   | PAN<br>TILT  | . =000<br>. =000   | PAN<br>TILT  |

|  |                     |        |                     |
|--|---------------------|--------|---------------------|
|  | PAN/TILT Speed      | . =000 | PAN/TILT Speed      |
|  | Dimmer              | . =000 | Dimmer              |
|  | Strobe              | . =000 | Strobe              |
|  | Colour              | . =000 | Colour              |
|  | fixed Gobo          | . =000 | fixed Gobo          |
|  | Rotation Gobo       | . =000 | Gobo Rotation       |
|  | Rotation Gobo Wheel | . =000 | Rotation Gobo Wheel |
|  | Focus               | . =000 | Focus               |
|  | Prism               | . =000 | Prism               |
|  | Prism Wheel         | . =000 | Prism Wheel         |
|  | Zoom                | . =000 | Zoom                |

## Mounting options:

**ATTENTION:** Install the device outside the audience's range.

It must be ensured that the intended mounting point has sufficient load-bearing capacity. The projector's suspension devices must be designed and dimensioned to withstand 10 times the payload for 1 hour without permanent damaging deformation.

The device must always be protected by a second independent fuse that complies with the applicable regulations.

There must be no persons underneath the device when it is mounted or is maintained.

The unit must be operated at least 0.5m from the nearest flammable surface.

Hanging installation may only be carried out by qualified personnel. The permissible load-bearing capacity and the applicable regulations for event technology must be observed. Under certain conditions, acceptance by experts or institutions is necessary.

It must be ensured that the device is safely mounted before it is put into operation.

If the unit is to be suspended from the ceiling or from high beams, etc., it is always necessary to work with truss systems. The unit must never be fixed in the room so that it can vibrate freely.

The device can be placed directly on the floor or in any position in the trussing without changing its functional properties.

The unit is equipped with two quick-fit Omega suspension brackets. These are screwed to the unit and provide a mounting hole for common clamps. When mounting this device on a crossbar, make sure that the clamp is screwed to the Omega suspension brackets using an M10 screw and nut. Insert the two quick-release fasteners of the respective Omega support bracket into the openings provided on the underside of the unit. Tighten the quick-release fasteners clockwise until they stop.

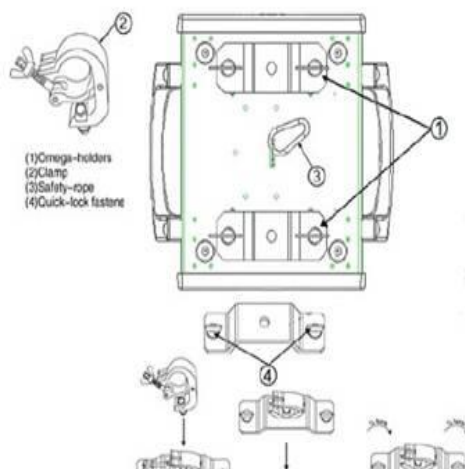
Always secure the device with a suitable safety rope when it is mounted overhead (mounting height >100 cm).

Only safety ropes and quick links in accordance with DIN 56927, shackles in accordance with DIN EN 1677-1 and BGV C1 chain binders can be used. The safety ropes, quick-connect links, shackles and chain binders must be sufficiently dimensioned and correctly applied on the basis of the latest industrial safety regulations (e.g. BGV C1, BGI 810-3).

Hook the quick-release link into the hole provided in the base plate. Guide the safety rope over the crossbar or a secure fixing point. Hook the end into the quick-release link and tighten the locking nut firmly.

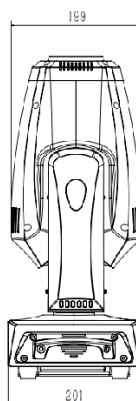
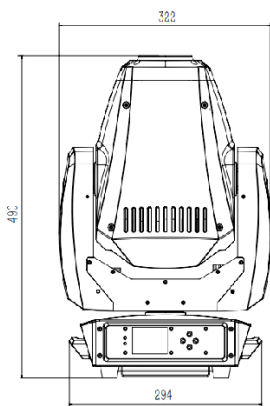
The maximum drop distance must not exceed 20 cm.

A safety rope that has been subjected to a fall load or has been damaged may no longer be used as a safety rope.



**Specifications:**

| Model   | lightmaxx Vector Spot Zoom 2.0  |
|---|---|
| <b>Power supply</b>   | AC100-240V 50/60 Hz   |
| <b>Total connected load</b>                                 | 260 Watt  |
| <b>Modes of operation</b>                                   | Automatic Mode, DMX, Master/Slave, Sound Mode   |
| <b>DMX Channels</b>   | 6 und 18  |
| <b>PAN Scan</b>   | 540° (16-bit), electrical correction  |
| <b>TILT Scan</b>  | 270° (16-bit), electrical correction  |
| <b>Colour Wheel</b>   | Colour Wheel, 7 types of color chips in one color wheel                                   |
| <b>Static Gobo</b>  | 7 Gobos + open  |
| <b>Rotation Gobo</b>  | 7 Gobos + open  |
| <b>Effect Wheel</b>   | Two effects Prism, a six-line prism, one rotary five-round prism, bidirectional rotation. |
| <b>Lens optical system<br/>mechanical focus, beam angle</b> | 11°-25°   |
| <b>Dimmer</b>   | 0-100%  |
| <b>Lightning rate</b>                                       | 0-20 Hz   |
| <b>Prism</b>  | bidirectional rotation  |
| <b>Connections</b>  | DMX-In/Out (3-pol/5-pol) Power Twist-In/Out   |
| <b>Dimensions (LxWxH)</b>                                   | 328 x 220 x 482 mm  |
| <b>Weight</b>   | 12,5 Kg   |



## Troubleshooting:

The following overview serves as an aid for quick troubleshooting. If you are unsure, contact the manufacturer, the dealer or the corresponding specialist personnel. Never open the device on your own!

| Symptom                           | Troubleshooting  |
|-----------------------------------|--|
| <b>No function</b>                | Check the mains connection and the fuse  |
| <b>No reaction in DMX mode</b>    | Check the cable connections  |
|                                   | Check your DMX address setting   |
|                                   | If available, try an alternative DMX controller  |
| <b>No reaction in remote mode</b> | Change the battery in your remote control  |
|                                   | Ensure that the IR transmitter and receiver are at close and clear distances from each other |

If the specified corrections have not led to success, please contact our service staff. The contact details can be found at [www.musicstore.de](http://www.musicstore.de)



## Cleaning:

Regular cleaning of the device from dirt and dust increases the shelf life of the product. Always disconnect the device from the power supply before cleaning it! Never clean the appliance wet! Optical lenses should be cleaned with a dry microfiber cloth to optimize light output. Ventilation grilles and openings should always be cleaned of dust and dirt. Suitable compressed air sprays are recommended for this application.

## Environmental protection:

The company MUSIC STORE professional GmbH always strives to reduce the burden of packaging to a minimum. The use of environmentally friendly and recyclable materials is of fundamental importance to us. Please dispose of and recycle the packaging components after use properly.



### Disposal of packaging:

Ensure that paper packaging, plastic materials, etc. are separately recycled. Observe the corresponding disposal instructions on the packaging.



### Disposal of batteries:

Batteries do not belong in the garbage! Please keep batteries in accordance with the official collection points or disposal stations in accordance with the specifications.



### Disposal of your old device:

Do not dispose of the device with household waste! This device is subject to the WEEE Directive (Waste Electrical and Electronic Equipment) in its currently valid version.

The device will be disposed of by an approved waste disposal company or your local waste disposal office. The regulations valid in your country must be observed!

**Manufacturer: MUSIC STORE professional GmbH,  
Istanbulstraße 22-26,  
51103 Cologne, Germany**

