


1. Follow directions in ReadMe in Tools zip file to install driver and flash software. I am not going to put in all the steps here because IBasso already has done a good job. Once driver and software are installed we are ready.
2. Create a folder called C:\DX180
3. You will want to open the FW zip file

DX180FW > Root > DX180_20240925_1.02.181_128G_img.zip >

Name	Type	Compressed size	Password p...	Size	Ratio	Date modified
 DX180_20240925_1.02.181_128G_img	File folder					9/25/2024 8:06 PM

4. Double click IMG file and you will want to select all the files and after selecting copy/Control + C

DX180

Name	Date modified	Type	Size
 metadata_2.img	11/12/2024 9:33 PM	Disc Image File	24 KB
 NON-HLOS.bin	11/12/2024 9:33 PM	BIN File	22,095 KB
 patch0.xml	11/12/2024 9:33 PM	XML Document	7 KB
 persist.img	11/12/2024 9:33 PM	Disc Image File	32,768 KB
 prog_firehose_ddr.elf	11/12/2024 9:33 PM	ELF File	582 KB
 qupv3fw.elf	11/12/2024 9:33 PM	ELF File	49 KB
 rawprogram0.xml	11/12/2024 9:33 PM	XML Document	28 KB
 recovery.img	11/12/2024 9:33 PM	Disc Image File	98,304 KB
 rpm.mbn	11/12/2024 9:33 PM	MBN File	217 KB
 storsec.mbn	11/12/2024 9:33 PM	MBN File	20 KB
 super_1.img	11/12/2024 9:33 PM	Disc Image File	396 KB
 super_2.img	11/12/2024 9:33 PM	Disc Image File	352,652 KB
 super_3.img	11/12/2024 9:33 PM	Disc Image File	1,179,808 ...
 super_4.img	11/12/2024 9:33 PM	Disc Image File	517,904 KB
 super_5.img	11/12/2024 9:33 PM	Disc Image File	639,532 KB
 tz.mbn	11/12/2024 9:33 PM	MBN File	1,972 KB
 uefi_sec.mbn	11/12/2024 9:33 PM	MBN File	127 KB
 userdata_1.img	11/12/2024 9:33 PM	Disc Image File	24 KB
 userdata_2.img	11/12/2024 9:33 PM	Disc Image File	164 KB
 userdata_3.img	11/12/2024 9:33 PM	Disc Image File	8 KB
 userdata_4.img	11/12/2024 9:33 PM	Disc Image File	8 KB
 userdata_5.img	11/12/2024 9:33 PM	Disc Image File	8 KB
 userdata_6.img	11/12/2024 9:33 PM	Disc Image File	8 KB
 userdata_7.img	11/12/2024 9:33 PM	Disc Image File	4 KB
 userdata_8.img	11/12/2024 9:33 PM	Disc Image File	4 KB
 userdata_9.img	11/12/2024 9:33 PM	Disc Image File	8 KB
 userdata_10.img	11/12/2024 9:33 PM	Disc Image File	4 KB
 vbmeta.img	11/12/2024 9:33 PM	Disc Image File	8 KB
 vbmeta_system.img	11/12/2024 9:33 PM	Disc Image File	4 KB
 xbl.elf	11/12/2024 9:33 PM	ELF File	2,923 KB
 xbl_config.elf	11/12/2024 9:33 PM	ELF File	49 KB

5. Paste/Control + V into folder you created c:\DX180
6. Create a sub-folder called Root -> C:\DX180\Root

OS (C:) > DX180 > Root

  Name

7. C:\Program Files (x86)\Qualcomm\QPST\bin\QFIL.EXE to launch flash tool
8. Now you need to choose Flat build and in Select Programmer hit Browse and goto c:\DX180 and it will find the file it needs itself. Goto Load XML and it will find the correct file on its own.

QFIL

File

Tools

Configuration

Help

No Port Available

Select Port ...

Select Build Type

☒ Flat Build ☐ Meta Build

Select Programmer

Programmer Path

C:\DX180\prog_firehose_dds.elf

Browse ...

Select Flat Build

Search Path

C:\DX180

Rawprogram and Patch

RawProgram	Patch
rawprogram0.xml	patch0.xml

Load XML ...

Download

Status

2024-11-12 21:22:46.216 Process Index:0

2024-11-12 21:22:46.216 Qualcomm Flash Image Loader (QFIL) 2.0.2.3

2024-11-12 21:36:11.332 Programmer Path:C:\DX180FW\prog_firehose_dds.elf

2024-11-12 21:36:23.494 Programmer Path:C:\DX180\prog_firehose_dds.elf

2024-11-12 21:36:23.494 Image Search Path: C:\DX180

2024-11-12 21:36:23.494 RAWPROGRAM file path: C:\DX180\rawprogram0.xml

2024-11-12 21:36:23.494 PATCH file path:C:\DX180\patch0.xml

Exit

Qualcomm Flash Image Loader (QFIL) 2.0.2.3

Storage Type: emmc

9. Now you are ready to flash the latest FW onto the DAP. Hold down Play button/middle button and keep holding it while at same time you plug in the USB cable from your PC. Keep holding it until you see a port appear. Best to use Thunderbolt port vs USB A port.

QFIL

File

Tools

Configuration

Help

Qualcomm HS-USB QDLoader 9008 (COM11)

SelectPort ...

Select Build Type

☒ Flat Build ☐ Meta Build

Select Programmer

Programmer Path C:\DX180\prog_firehose_ddr.elf

Browse ...

Select Flat Build

Search Path C:\DX180

Rawprogram and Patch

RawProgram	Patch
rawprogram0.xml	patch0.xml

Load XML ...

Download

Status

2024-11-12 21:22:46.216 Process Index:0

2024-11-12 21:22:46.216 Qualcomm Flash Image Loader (QFIL) 2.0.2.3

2024-11-12 21:36:11.332 Programmer Path:C:\DX180FW\prog_firehose_ddr.elf

2024-11-12 21:36:23.494 Programmer Path:C:\DX180\prog_firehose_ddr.elf

2024-11-12 21:36:23.494 Image Search Path: C:\DX180

2024-11-12 21:36:23.494 RAWPROGRAM file path: C:\DX180\rawprogram0.xml

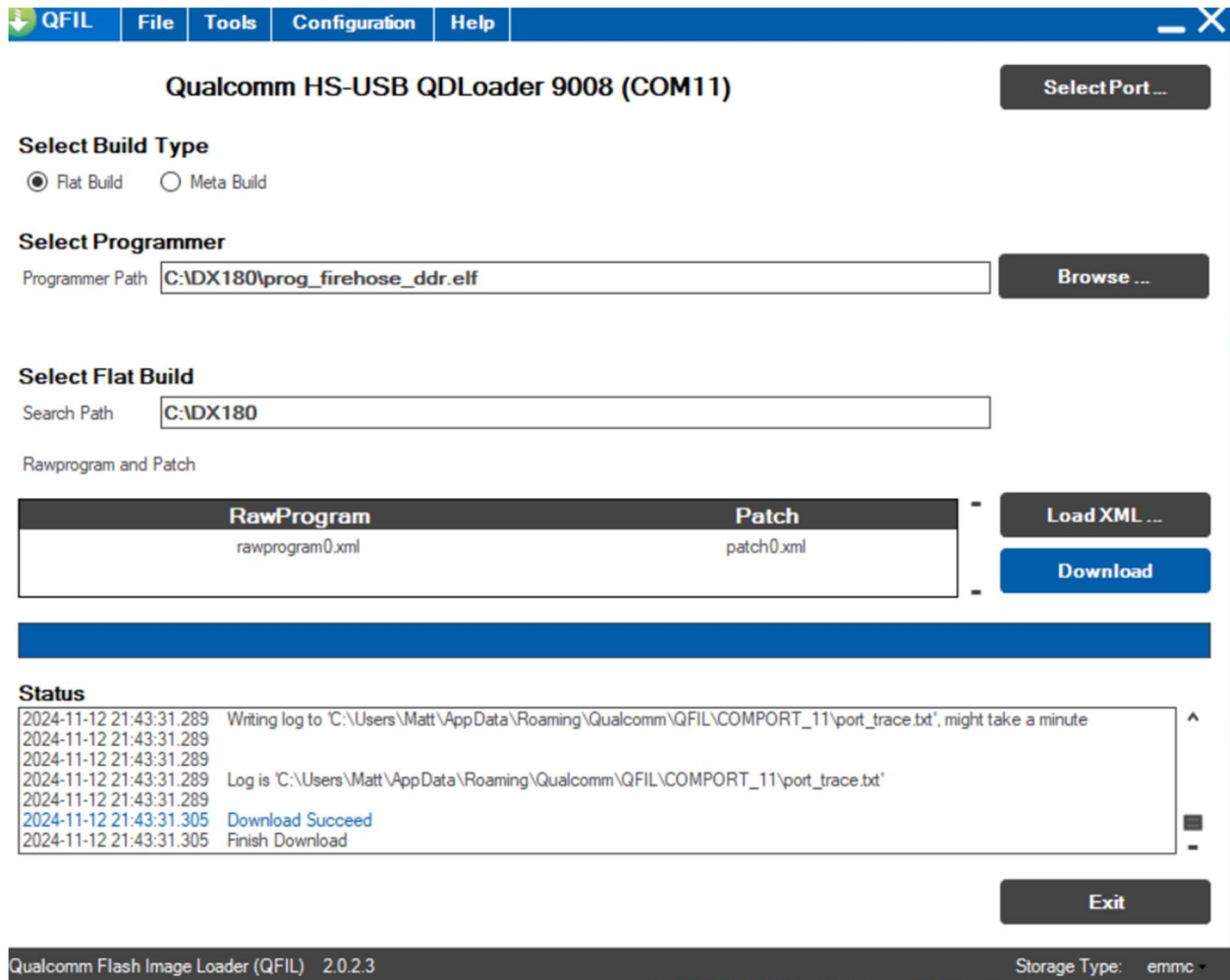
2024-11-12 21:36:23.494 PATCH file path:C:\DX180\patch0.xml

Exit

Qualcomm Flash Image Loader (QFIL) 2.0.2.3

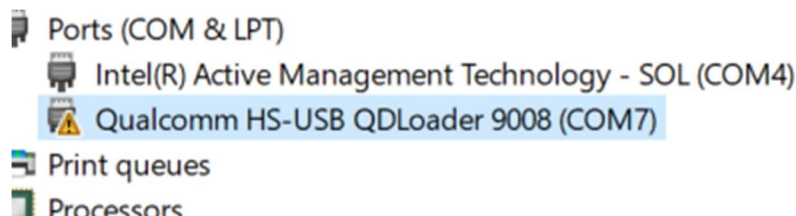
Storage Type: emmc

10. We are now ready to flash the DAP. Choose DOWNLOAD and the process will start. Do NOT unplug the DAP while its being flashed or you could have a \$500 paperweight.



You should see FLASH DOWNLOADED and at this point the DAP now has the FW installed. You can unplug the DAP and power on now. Before we wipe data several times we will need to get 2 files off the DAP so leave QFIL open.

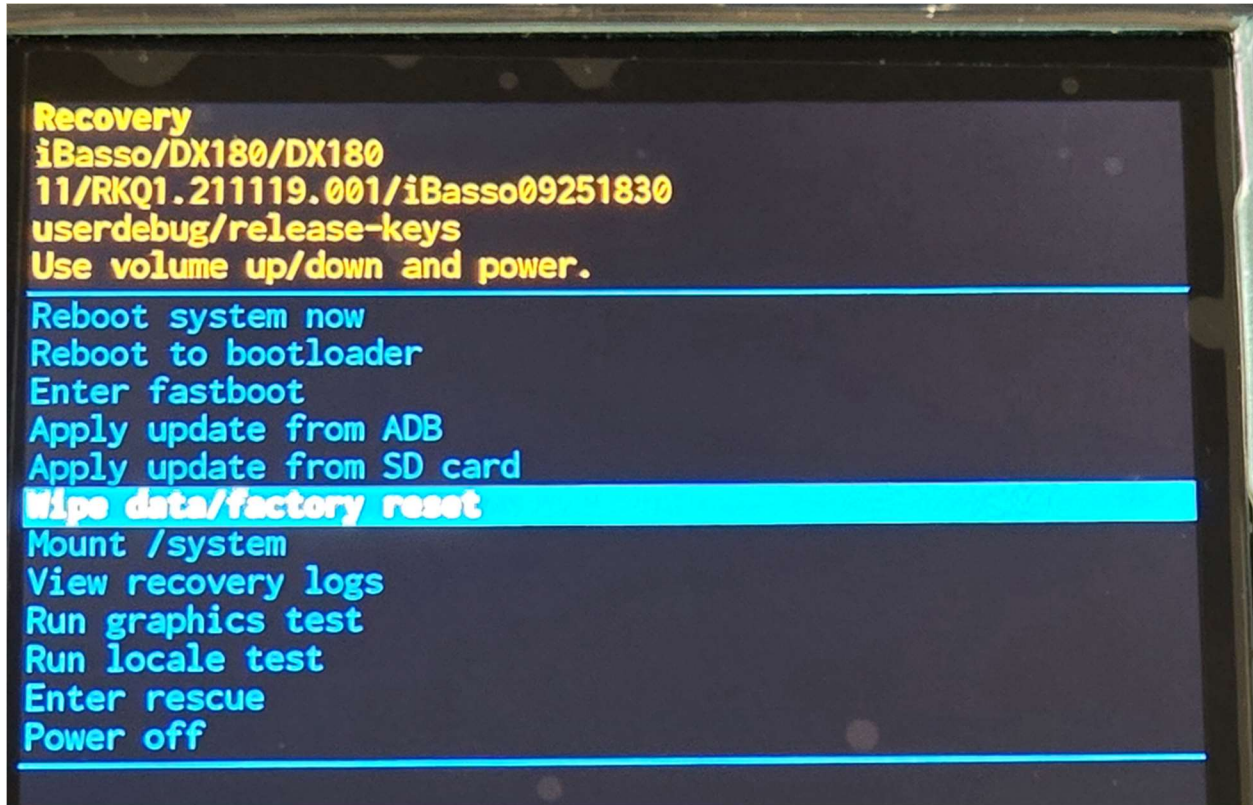
NOTE: If you are having issues with FLASH not being successful it is likely Windows is not detecting the DAP correctly. Check your Device Manager and you will likely see this:



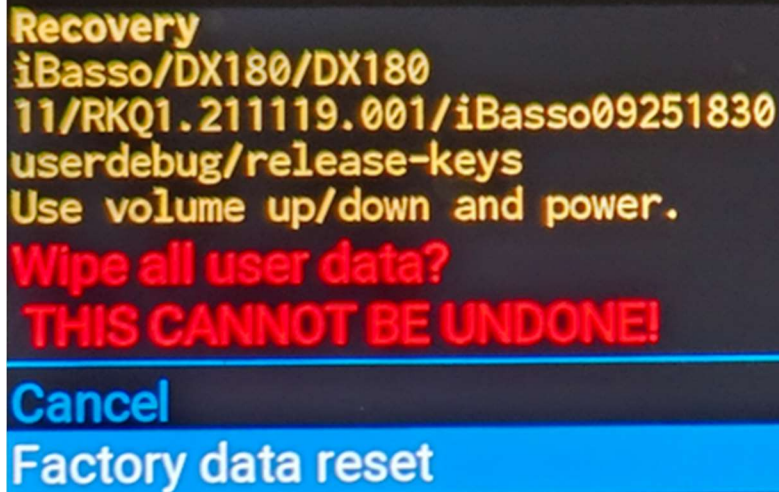
If you have a Thunderbolt 3 port that is best one to use as I have NEVER had any issues. If you do not try the following:

- A. Unplug DAP from USB and restart your PC

- B. Plug USB cable into different USB port
 - C. Power on DAP and then power off
 - D. Hold PLAY button for a bit and then plug into USB cable
 - E. Goto Device Manager and see if that “!” is now gone
11. Unplug DAP from USB and power on but do NOT complete the setup on DAP. You may have to hold power button longer than what you normally do.
12. Push power button and to bring up Power off Reset options and hit Restart and as soon as you do hold down upper button and keep holding until you see this:

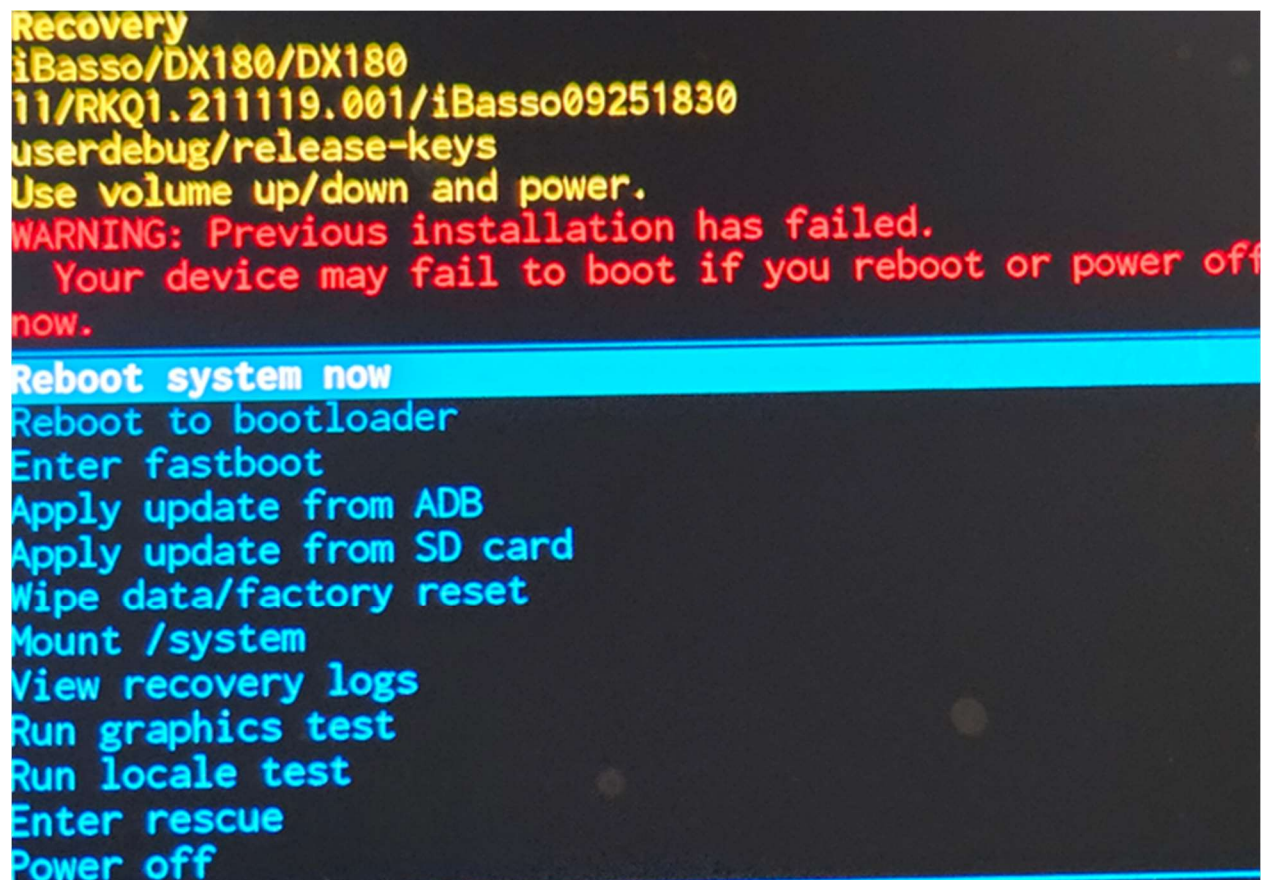


13. Use volume wheel to select WIPE Data/Factory RESET and select Factory Data Reset



Recovery
iBasso/DX180/DX180
11/RKQ1.211119.001/iBasso09251830
userdebug/release-keys
Use volume up/down and power.
Wipe all user data?
THIS CANNOT BE UNDONE!
Cancel
Factory data reset

14. Push in on power button once you selected Factory Data Reset. Do this 3 times.
15. Choose Reboot System Now and push volume/power button to start power-up



Recovery
iBasso/DX180/DX180
11/RKQ1.211119.001/iBasso09251830
userdebug/release-keys
Use volume up/down and power.
WARNING: Previous installation has failed.
Your device may fail to boot if you reboot or power off now.
Reboot system now
Reboot to bootloader
Enter fastboot
Apply update from ADB
Apply update from SD card
Wipe data/factory reset
Mount /system
View recovery logs
Run graphics test
Run locale test
Enter rescue
Power off

16. Now complete the setup on the DAP