

# B-Series Vertical Sleeve, 57 mm, #18, 55M

## 物料号

**RBB1892JA**



The B-Series Vertical Sleeve is designed to be welded perpendicularly to common grades of structural plates and shapes. Typical applications include welding to base plates, anchor plates and for tying together structural steel members.

## 功能

Designed to connect vertical reinforcing bars and angular reinforcing bars greater than 45 degrees

Machined from weldable grades of steel

Works with saw cut, flame cut and sheared bars

Can be visually inspected after installation

Available with extended sleeve lengths

## 产品属性

材料: 钢

表面: 平整

100% U.S. Domestic Content: 是

Sleeve: Standard Length

Rebar Size, Metric: 57 mm

Rebar Size, US: #18

Rebar Size, Canada: 55M

Diameter 1 (Ø1): 95 mm

Diameter 2 (Ø2): 67 mm

Length 1 (L1): 178 mm

Length 2 (L2): 64 mm

Unit Weight: 5.03 kg

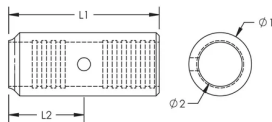
Designed to Meet: AASHTO;ABNT NBR 8548:1984;ACI 318 Type 1 (125% Specified Yield);ACI 318 Type 2 (Specified Tensile);ACI 349;ACI 359;AS3600

ADDITIONAL PRODUCT DETAILS

Prior to installation, please read and understand all of the detailed instructions and safety notices provided in the nVent LENTON Cadweld Rebar Splicing System Instruction Manual.

Sizes not shown may be available by special order. Contact your nVent LENTON representative for more information.

图表



警告

应仅根据 nVent 的产品说明书与培训材料安装并使用 nVent 的产品。可访问 [www.nvent.com](http://www.nvent.com) 获取说明书，或者向您的 nVent 客服代表索取。错误安装、使用不当、滥用或未能完全遵守 nVent 的说明与警告，可能会造成产品故障、财产损失、严重的人身伤害及死亡和/或使得保修服务无效。

北美	欧洲	欧洲	APAC
+1.800.753.9221	Netherlands:	Germany:	Shanghai:
Option 1 - Customer	+31 800-0200135	800 1890272	+ 86 21 2412 1618/19
Care	France:	Other Countries:	Sydney:
Option 2 - Technical	+33 800 901 793	+31 13 5835404	+61 2 9751 8500
Support			



Our powerful portfolio of brands:

CADDY ERICO HOFFMAN ILSCO SCHROFF TRACHTE