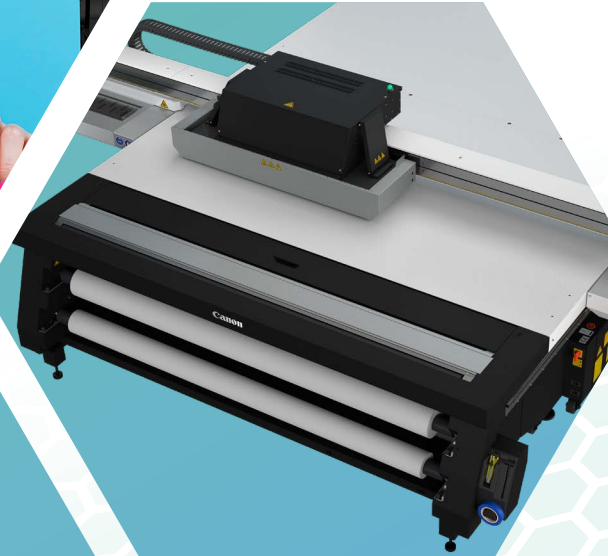


Canon



LARGE FORMAT PRINTING SOLUTIONS

**HELPING YOU REACH
NEW HEIGHTS**



A FAMILY OF SOLUTIONS

LARGE-FORMAT PRINTING SOLUTIONS. CANON INNOVATION IN EVERY PRINT.

As a worldwide innovation leader for over 80 years, Canon has a legacy of cultivating breakthrough technologies. Its expertise in the areas of science, engineering, and manufacturing has produced world-leading imaging solutions and consistent placement among the top U.S. patent holders of the decade.

This corporate culture of technological innovation drives the company to produce an ever-expanding range of large-format printing solutions, each one carefully crafted to address specific customer needs in each market segment served. As a result, the large format family has grown into a broad array of solutions that offer Canon's customers more features, functions, and options than ever before.

Today, the line of Canon large-format printers is at the forefront of the industry. Canon's award-winning printers are an ideal platform for innovation. Specialized customer solutions and applications range from fine art and photography, textiles, and dye-sublimation, to production printing, technical documents, and general purpose poster-making.

You can extend your application capabilities even further with incredible leading technologies such as varnish, white ink, and raised texture printing, and complement with smart cutting and finishing accessories. In fact, your potential to profit from creating high-value output is limited only by your imagination.

The following devices shown above, from left to right and top to bottom:
Colorado M-series, ColorWave 3800, PlotWave 5500, TZ-30000 MFP Z36,
GP-4000 w/ optional MFR, PRO-6600, TM-355, TX-3100 MFP Z36, TM-340,
Arizona 2300 series GTF

TABLE OF CONTENTS

GRAPHIC DESIGN SYSTEMS

ARIZONA SERIES	4
COLORADO M-SERIES	5
imagePROGRAF PRO SERIES	6
imagePROGRAF GP S SERIES	7
imagePROGRAF GP SERIES.....	8 - 9

PRODUCTIVE CAD / TECHNICAL DOCUMENT SYSTEMS

ColorWave SERIES	10
PlotWave SERIES	11
imagePROGRAF TZ SERIES	12

MID - LOW VOLUME/ GENERAL OFFICE

imagePROGRAF TX SERIES	13
imagePROGRAF TM SERIES	14

LARGE FORMAT MEDIA

imagePROGRAF	15
--------------------	----

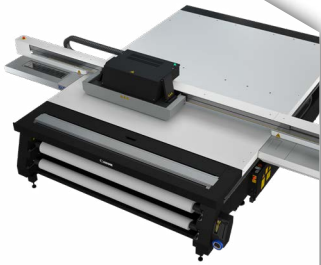


GRAPHIC DESIGN SYSTEMS

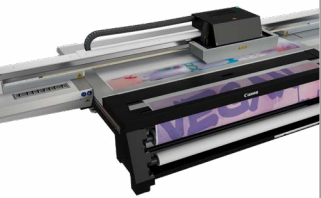
ARIZONA SERIES

Canon Arizona UV flatbed printers are all based on a true, stationary platform delivering exceptional image quality and application versatility. These printers can print directly onto rigid substrates or, based on model, can also print on roll media. The prints are suitable for indoor and outdoor use and the inks are GREENGUARD Gold certified. Arizona series printers give professional print service providers the ability to offer premium printing services.

- True stationary flatbed versatility and performance at an exceptional price
- Choice of FLOW technology (GTF/XTF) or classic vacuum (GT)
- Includes White ink capability for backlights or printing onto colored objects
- Roll Media Option available for true roll-to-roll capability
- VariaDot imaging technology for near-photographic results
- Instant switching between flatbed printing and optional roll-to-roll
- ONYX Thrive enables a true end-to-end PDF workflow from digital file submission through color management, printing, and cutting



Arizona
2300 series



Arizona
135 GT

MODEL

6100 XTHF Mark II Series

6100 XTS Mark II Series

2300 Series XTF

2300 Series GTF

1300 Series GT/GTF

1300 Series XTF

135 GT

MAXIMUM SIZE

98.4" x 126" x 1" flatbed only

98.4" x 121.3" x 2" flatbed only

98.4" x 121.3" x 2" flatbed, 87" Wide roll

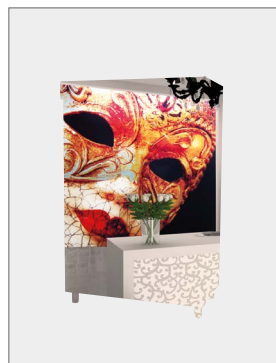
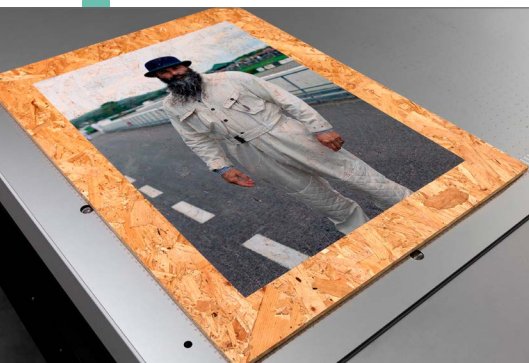
49.6" x 98.8" x 2" flatbed, 87" Wide roll

49.2" x 98.4" x 2" flatbed, 87" Wide roll

121.3" x 98.4" x 2" flatbed, 87" Wide roll

49.2" x 98.4" x 2" flatbed, 87" Wide roll

Ink sets depend upon configuration



GRAPHIC DESIGN SYSTEMS

COLORADO M-SERIES



Colorado series roll-to-roll printers are designed to deliver accurate, repeatable prints at high print speeds. With FLXfinish+, the Colorado printer series can print matte AND gloss on one print in one pass to create beautiful and striking output! The newest member of the family, the Colorado M-series, was designed to allow you to say “yes” to more jobs, create stunning applications, and reduce turnaround times. Its modular architecture allows it to grow with your business, and is designed for low cost of ownership.

- Fastest 64” production printer in its class to help reduce production times
- Optional UVgel white ink helps reduce hassles related to printing with white ink
- Easily add speed, FLXfinish+, dual-roll capabilities, and many other new functionalities
- Lower ink usage can help lower production costs
- Unattended production helps enable labor savings
- Print matte and gloss on the same print without varnish
- Highly accurate color and geometric consistency help to reduce rework and waste
- Jumbo Roll and Wallpaper Factory capabilities help create labor savings
- ONYX Thrive enables a true end-to-end PDF workflow from digital file submission through color management, printing, and cutting



Colorado M-series



White Ink Configuration

MODEL

COLORADO M3

COLORADO M5

MAXIMUM SIZE

64” Wide

64” Wide

INKS

4 color – CMYK UVgel with optional White ink

4 color – CMYK UVgel with optional White ink





GRAPHIC DESIGN SYSTEMS

imagePROGRAF PRO SERIES

Professional photographers, graphic designers, and more desire a wide color gamut that accurately reproduces even the most difficult colors. From stunning black-and-white prints with deep blacks, detailed gradations to extraordinary color, the Canon imagePROGRAF PRO Series is designed to achieve it all.

- Archival LUCIA PRO II Ink
- High light resistant for long-term preservation of inks
- Improved black density with a wider dark-color gamut range
- Superb scratch resistance
- Color Calibration

MODEL

PRO-6600
PRO-4600
PRO-2600

MAXIMUM SIZE

60" Wide
44" Wide
24" Wide

INKS

11-Color plus Chroma Optimizer
11-Color plus Chroma Optimizer
11-Color plus Chroma Optimizer



PRO-6600



PRO-2600



GRAPHIC DESIGN SYSTEMS

imagePROGRAF GP S SERIES



The GP S Series with orange ink is designed to achieve bold and robust outputs. These powerful production printing systems, with the newly developed 7-Color LUCIA PRO II Ink System, are built for bringing production signage, advertisements, and other output to the next level.

- LUCIA PRO II Seven-Color Ink System
- 96% of PANTONE™ Formula Guide Solid and Coated*
- L-COA PRO high-speed image processing engine can process high resolution and high volume data at high speed
- Ink Ejection Status Monitoring
- Intelligent Media Handling
- Superb Scratch Resistance



GP-6600S



GP-4600S

MODEL

GP-6600S
GP-4600S

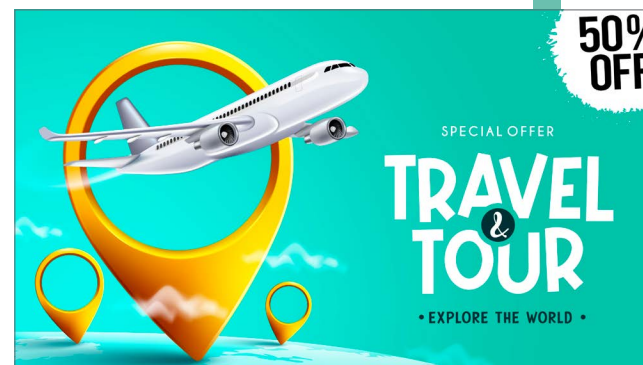
MAXIMUM SIZE

60" Wide
44" Wide

INKS

7-Color
7-Color

*GP-4600S/6600S: 96% when using Premium Semi-Gloss Paper 2 with imagePROGRAF printer driver at [High] [Color Correction Off]





GRAPHIC DESIGN SYSTEMS

imagePROGRAF GP SERIES

The GP series printers are the world's first large-format printers with aqueous pigment Fluorescent Pink ink*, equipped with Canon's unique Radiant Infusion which layers the Fluorescent Pink ink with other inks on the paper surface during printing to create bright and soft color reproduction.

The 44" GP-4000 and 24" GP-2000 are 10-color plus Fluorescent Pink ink large-format printers. With the Red, Orange, Green, Violet, and Fluorescent Pink inks, the imagePROGRAF GP-2000 printer has the largest color gamut of any imagePROGRAF printer to date.

- imagePROGRAF GP series, the world's first* aqueous inkjet models to include Fluorescent Pink ink
- The world's first PANTONE® calibrated printers for PANTONE® PASTELS & NEONS GUIDE coated
- Intelligent Media Handling
- Built-in color calibration



GP-4000



GP-2000

MODEL

GP-4000

GP-2000

MAXIMUM SIZE

44" Wide

24" Wide

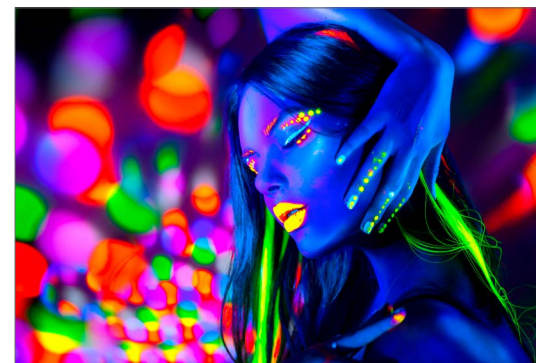
INKS

10-Color plus Fluorescent Pink

10-Color plus Fluorescent Pink

* In major aqueous pigment, large-format inkjet printer manufacturers (excluding sublimation transfer systems). As of 09/27/2021 (Canon research).

PANTONE® is a trademark or registered trademark of PANTONE® LLC in the United States and/or other countries. As of September 27, 2021, according to professional services performed by PANTONE® under License Agreement between Canon, Inc. and PANTONE® LLC. PANTONE® PASTELS & NEONS GUIDE Coated color gamut coverage rate is 97% for GP-4000/GP-2000 when using Photo Paper Pro Premium Platinum with imagePROGRAF printer driver at [Poster/Photo (Fluorescent)] [Highest] (600 dpi). PANTONE® Colors generated may not match PANTONE®-identified standards. Consult current PANTONE® Publications for accurate color.



GRAPHIC DESIGN SYSTEMS imagePROGRAF GP SERIES



The 36" GP-300 and 24" GP-200 are 5-color (MBK, BK, C, M, Y) plus Fluorescent Pink ink large format printers. These models are ideal for supporting in-house production of large format prints with increased appeal and visibility in various industries such as retail stores, restaurants, government offices, schools, and general companies.

- The world's first PANTONE® calibrated printers for PANTONE® PASTELS & NEONS GUIDE coated which includes fluorescent and pastel colors
- Direct USB drive printing
- Space-saving design
- Secure print features



GP-300



GP-200

MODEL

GP-300

GP-200

MAXIMUM SIZE

36" Wide

24" Wide

INKS

5-Color plus Fluorescent Pink

5-Color plus Fluorescent Pink





PRODUCTIVE CAD / TECHNICAL DOCUMENT SYSTEMS

ColorWave SERIES

Push the boundaries of your large format printing with the ColorWave series printing system, a monochrome and color printer, scanner, and copier in one convenient single footprint. Gain a competitive edge with distinctive high-quality wide format drawings and presentations without the need for expensive coated paper. With its intuitive design, the ColorWave series color printer allows for easy end-user walk-up capability using ClearConnect controller software.



**ColorWave
3800**



**ColorWave
3600**

- The prints are instantly dry with the patented CrystalPoint technology
- Helps ensure robust, waterfast prints with sharp lines, high readability of fine details, and smooth, even area fills
- ImageLogic Technology – turns imperfect originals into high quality copies and scans
- Built-in security features
- Integrated job submission software
- 2 - 6 rolls capacity
- Up to 25,000 sqft/month
- Up to 4 D prints/minute

MODEL

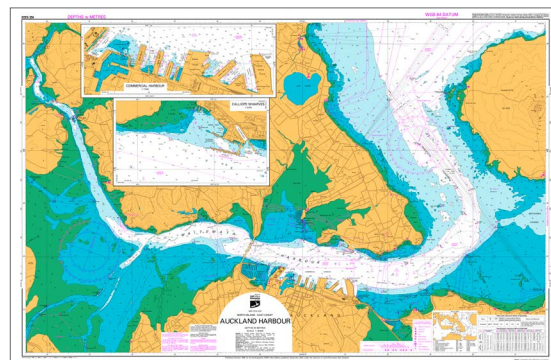
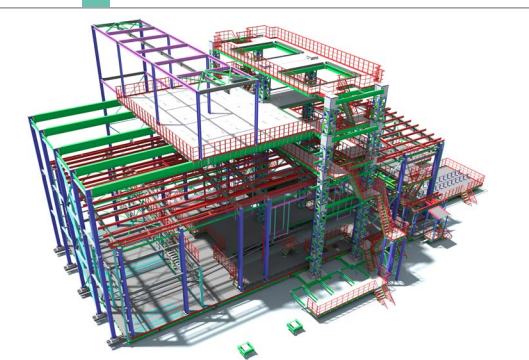
ColorWave 3800
ColorWave 3600

MAXIMUM SIZE

42" Wide
42" Wide

TONERS

4 Colors
4 Colors



PRODUCTIVE CAD / TECHNICAL DOCUMENT SYSTEMS

PlotWave SERIES



The PlotWave series is ideal for decentralized low-volume to mid-volume walk-up printing environments. These devices are utilized by workgroups of monochrome CAD professionals who require both productivity and ease of use, leveraging the latest controller hardware running Windows 10 IoT LTSC 64-bit operating system, and new standard security features. The Scanner Express IV option integrates directly on top of the printer for a Single Footprint MFP configuration.

- ImageLogic Technology – turns imperfect originals into high quality copies and scans
- Radiant Fusing Technology – eco-friendly fusing method, providing instant-on printer availability with no warm-up time
- Integrated job submission software
- Built-in security features
- Up to 6 rolls capacity
- Up to 60,000 sqft/month
- Up to 10 D prints/min



**PlotWave
5500**



**PlotWave
3500**

MODEL

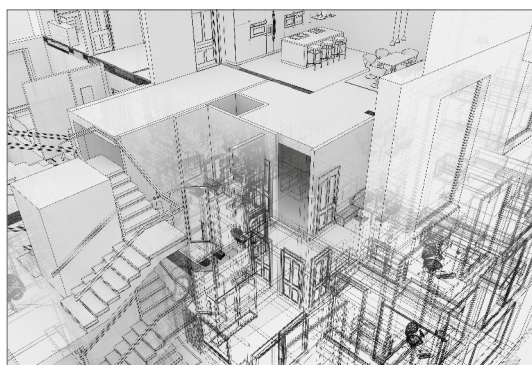
PlotWave 7500
PlotWave 5500
PlotWave 5000
PlotWave 3500
PlotWave 3000

MAXIMUM SIZE

36" Wide
36" Wide
36" Wide
36" Wide
36" Wide

TONERS

Monochrome
Monochrome
Monochrome
Monochrome
Monochrome





PRODUCTIVE CAD / TECHNICAL DOCUMENT SYSTEMS

imagePROGRAF TZ SERIES

The imagePROGRAF TZ series seizes and expands the production aqueous inkjet market with its ability to print black-and-white line drawings and full-color posters on multiple media substrates that LED devices are unable to support. This hybrid model is uniquely qualified to capture market share where overall print volumes are trending lower and the need to get more out of a machine is a business necessity. This MFP includes the Z36 scanner and intuitive system controller, making it a powerful addition to Canon's portfolio of large format printers perfect for scanning maps, drawings, and renderings.

- imagePROGRAF TZ series – the fastest imagePROGRAF EVER
- Up to 4 D prints/minute
- Up to 244 D prints/hour
- Integrated 100-print capacity top stacker
- Dual-roll Intelligent Media Handling System that detects media type width and length
- Scan monochrome drawings at up to 13" per second and color up to 6" per second



TZ-30000



**TZ-30000
MFP Z36**

MODEL

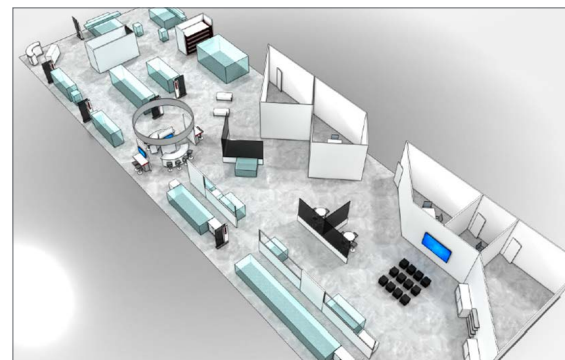
TZ-30000
TZ-30000 MFP Z36

MAXIMUM SIZE

36" Wide
36" Wide

INKS

5-Color
5-Color



MID VOLUME/ GENERAL OFFICE imagePROGRAF TX SERIES



The imagePROGRAF TX series large-format printing system is a platform designed to help meet the evolving needs of your customers. Canon innovations and a full complement of solutions help improve productivity, maximize utilization, facilitate access, and enhance security features—all in a seamless system that puts you at the forefront of the large-format printing industry.

- 5-Color LUCIA TD pigment inks
- Print speeds of up to 190 D-sized prints per hour*
- Wi-Fi (registered trademark) ready** and cloud-enabled***
- Scan-to-Copy/File/Share capability
- Scan monochrome drawings at up to 13" per second and color up to 6" per second



TX-4100



TX-3100
MFP Z36

MODEL

TX-4100
TX-4100 MFP Z36
TX-3100
TX-3100 MFP Z36

MAXIMUM SIZE

44" Wide
 44" Wide
 36" Wide
 36" Wide

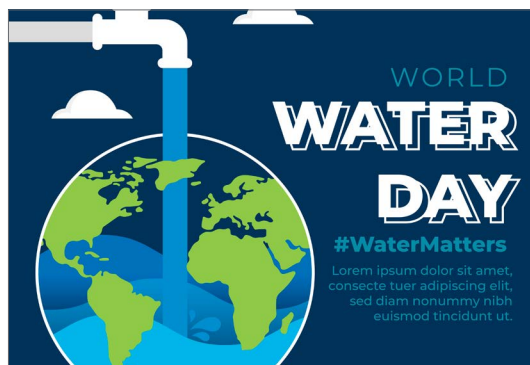
INKS

5-Color
 5-Color
 5-Color
 5-Color

* Plain paper, fast (Q5) mode.

** Wireless printing requires a working network with wireless 802.11b/g or 802.11n capability. Wireless performance may vary based on terrain and distance between the printer and wireless network clients. Wi-Fi is a registered trademark of the Wi-Fi Alliance.

*** Subscription to a third-party cloud service is required for certain features. Subject to third-party cloud service provider's terms and conditions. Specifications and availability subject to change without notice.





MID - LOW VOLUME/ GENERAL OFFICE

imagePROGRAF TM SERIES

The TM Series offers versatility and productivity to help meet the growing demands of today's marketplace. With a range of models, this series allows you to easily produce CAD documents, posters, banners, flyers, and more.

- 5-color Pigment Ink Set with New Magenta Ink
- Speeds of up to approximately 3.2 ppm for a 24" x 36" size sheet
- Automatic Paper Detection
- Color Calibration System
- Flat-top Design with 4.3" Tilt Screen
- Creative and Workflow Solutions Available
- Multifunction Solutions Available



**TM-355
MFP Z36**



TM-250

MODEL

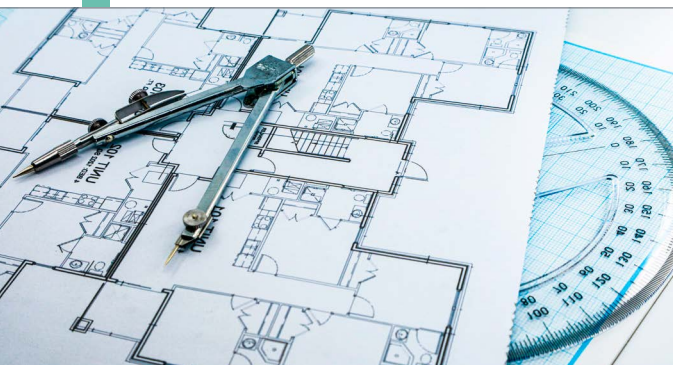
- TM-355**
- TM-355 MFP Z36**
- TM-350**
- TM-350 MFP Z36**
- TM-350 MFP Lm36**
- TM-250**
- TM-250 MFP Lm24**
- TM-340**
- TM-340 MFP Lm36**
- TM-240**
- TM-240 MFP Lm24**

MAXIMUM SIZE

- 36" Wide
- 36" Wide
- 36" Wide
- 36" Wide
- 36" Wide
- 24" Wide
- 24" Wide
- 36" Wide
- 36" Wide
- 24" Wide
- 24" Wide

INKS

- 5-Color
- 5-Color
- 5-Color
- 5-Color
- 5-Color
- 5-Color
- 5-Color
- 5-Color
- 5-Color
- 5-Color
- 5-Color



imagePROGRAF Large Format Media



Canon media delivers consistently superb image quality and product performance. Rigorous testing helps ensure compatibility with imagePROGRAF printers to provide the best image quality possible.

Canon has the media to help meet your needs. Drafting designs, producing point-of-purchase displays, and creating photographic and fine art reproductions can all be accomplished with Canon imagePROGRAF printers and media.

PHOTOGRAPHIC

High-end photography and portraits demand excellent photographic paper, and Canon offers a wide variety to meet these printing needs. Accurate, clear reproduction of digital images is a breeze with Canon photographic and glossy media options.

FINE ART

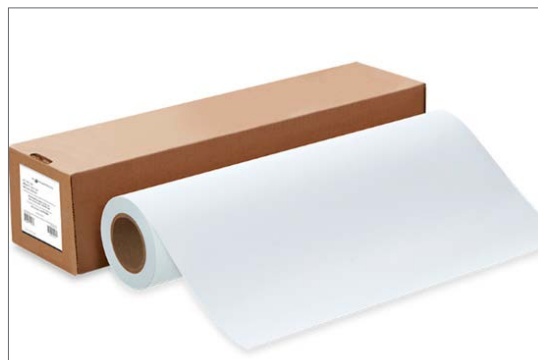
Special artwork deserves special media. Paintings and digital art superbly reproduce on Canon Fine Art Media. Available in canvas, velvet, and water-resistant styles, Canon Media meets the challenge of fine art printing.

SIGN/BANNER/DISPLAY MEDIA

Eye-catching signs, bulletins, and announcements are easy to create with Canon large-format printers. To suit every application, our sign and banner media are tear-resistant and offer a variety of special features, including adhesive backing, vinyl coating, water resistant, and repositionable.

COATED/BOND

Blueprints, maps, schedules, and sketches are ideally rendered with Canon large-format printers. These media are ideal for engineers and architects as well as CAD and GIS applications. For everyday use and draft printing, Canon has a wide variety of durable, inexpensive coated paper, available in both 150-ft. rolls and 300-ft. rolls (as well as 30-inch rolls).





usa.canon.com/largeformat

The following devices were shown on the front cover:

ColorWave 3600 4-roll, imagePROGRAF TZ-30000 MFP Z36, Arizona 2300 series, Colorado M-series, imagePROGRAF GP-4000 w/ optional MFR, imagePROGRAF TM-355

As an ENERGY STAR® Partner, Canon U.S.A., Inc. has qualified these models as meeting the ENERGY STAR energy efficiency criteria through an EPA recognized certification body. ENERGY STAR and the ENERGY STAR mark are registered trademarks owned by the U.S. Environmental Protection Agency. Canon and imagePROGRAF are registered trademarks of Canon Inc. in the United States and may also be registered trademarks or trademarks in other countries. Microsoft, Office, Windows, Outlook, Word, Excel, and PowerPoint are either registered trademarks or trademarks of Microsoft Corporation in the United States and/or other countries. Wi-Fi is a registered trademark of the Wi-Fi Alliance. Autodesk, the Autodesk logo, and AutoCAD are registered trademarks or trademarks of Autodesk, Inc., and/or its subsidiaries and/or affiliates in the U.S.A. and/or other countries. All other referenced product names and marks are trademarks of their respective owners. Certain printer output and screen images are simulated. Canon products offer certain security features, yet many variables can impact the security of your devices and data. Canon does not warrant that use of its features will prevent security issues. Nothing herein should be construed as legal or regulatory advice concerning applicable laws; customers must have their own qualified counsel determine the feasibility of a solution as it relates to regulatory and statutory compliance. Some security features may impact functionality/performance; you may want to test these settings in your environment. Subscription to a third-party cloud service is required for certain features. Subject to third-party cloud service provider's terms and conditions. Specifications and availability subject to change without notice. Not responsible for typographical errors.

©2024 Canon U.S.A., Inc. All rights reserved.

01/24-0093-10163

ODGS-1476 01/19/24 CC/PDF