

BM-800 microphone and V8 card sound operation



Live Sound Card

User Manual



Please read the instruction carefully before use to avoid problems caused by improper operation.

Usage precautions and Frequently asked questions

- 1. Press the “POWER” button for 3 seconds to turn on or turn off the sound card.** After turning on the sound card, put on the earphones, short press the “POWER” button you can start live broadcasting when you hear “Internal opening” in the earphones/headphones.
- 2. Charge the sound card before use.** Low volume or poor sound quality indicates that sound card power is insufficient. Please don't charge while using the sound card, because current will cause interference.
- 3. When using the sound card, all interfaces need to be fully plugged in.** If the mobile phone has a phone case, please remove the case to avoid the shell against the plug.



4. When using the computer/laptop for live broadcast or accompaniment, directly connect the computer USB interface and the sound card charging interface with the charging cable. Don't use the live ports to connect a computer or laptop.

The computer will automatically identify and install the sound card driver (there will be a display in the lower right corner of the computer). If the computer does not recognize the sound card driver, please check if the interface and cable connected is correct.

5. If you hear heavy sound or noise when use an iPhone to live broadcast, please try to turn off the volume of the phone. You can adjust the volume from the sound mixer card.

6. The Bluetooth function can only support accompaniment devices with Bluetooth. You can also use accompaniment cable to connect the accompaniment devices.



7. When listening to the live broadcast effect with a mobile phone, remember that the phone used for listening should not be too close to the live broadcast mobile phone. There will be signal interference and howling.

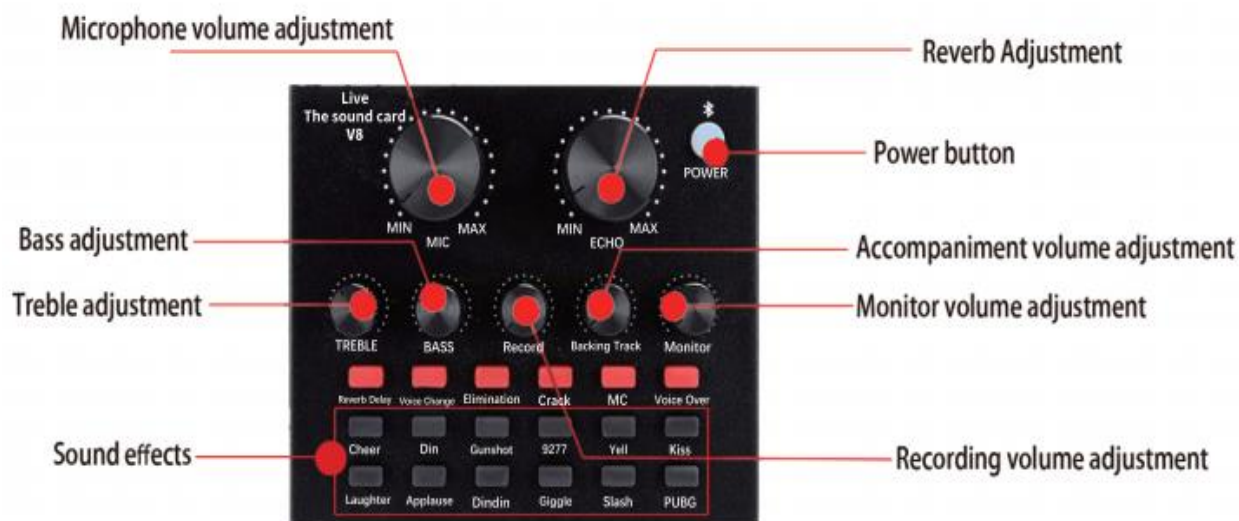
8. Please turn down the volume of the microphone to reduce the noise sound. If the sensitivity of the microphone is high, there might be a noise sound or harsh sound from the sound card.

9. It is not recommended to use an external speaker for computer live broadcasting, because the sound from the speaker may be recorded by the microphone again, resulting in double tone. It is recommended to unplug the speaker and use headphones during live broadcasting on computer.

10. The “Monitor” interface is for earphone without mic, and the “Headset” interface is for earphone/headset with mic. To make sure that you use the right port, please try both earphone/headphone port if there is noise sound or interference sound from one port.



Control Panel Introduction



Single Mobile Phone Live Broadcast Connection Method

If your phone/tablet do not have a 3.5mm audio jack, please use an audio adapter cable.



Dual Mobile Phone Live Broadcast Connection Method



Mobile Live/Computer Accompaniment Connection Method

The accompaniment computer can be connected in 2 ways:

One way is to connect the charging port of the sound card through the charging cable;
The other way is to connect the backing track interface of the sound card through the accompaniment cable.



Computer Live/Accompaniment Connection Method

1. To live broadcast on a computer/laptop, you need to connect the charging port of the sound card through the charging cable.

2. The computer will automatically identify and install the sound card driver.



Bluetooth connection method



1. Turn on Bluetooth on mobile phone/tablet
2. After the Bluetooth device "V8" is detected, click "V8" to connect.
3. Please note that Bluetooth function only support connected devices as accompaniment.

Product parameters

Channel system: Dual channel
Sampling Resolution: 16bit
Installation method: External
Audio interface: 3.5mm interface

Output samples: 48KHZ
Battery capacity: 1200mAH
Multi-speaker mode: 2.0
Charging: 5V/1A

Packing list

Sound card *1
Recording cable * 1
User manual *1

Charging/Computer live cable *1
Accompaniment cable *1

Computer accompaniment and computer live debugging diagram



To check if the sound card has been identified and installed by the computer:

1. Right-click the loudspeaker on the taskbar of the computer, open "Playback device ". If "V8" is displayed and set as the default, it means the sound card has been recognized by the computer and installed successfully
2. Right-click the loudspeaker on the taskbar of the computer, open "Recording equipment ". If "V8" is displayed and set as the default, it means the sound card microphone has been recognized by the computer and installed successfully.

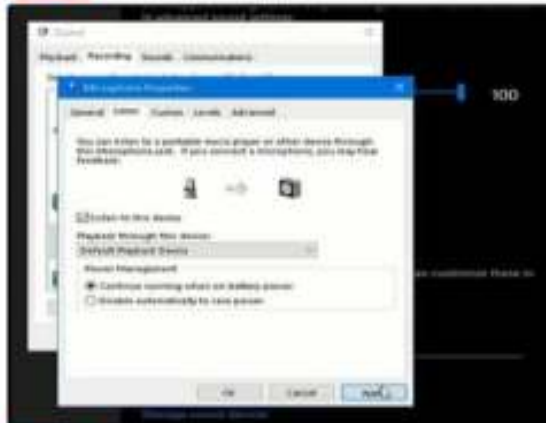


How To Set Up The Microphone?

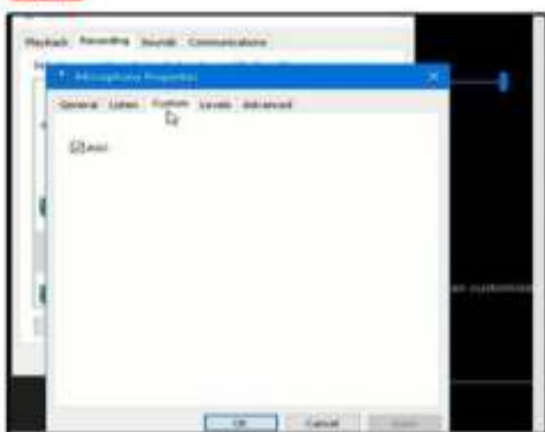
Step 1



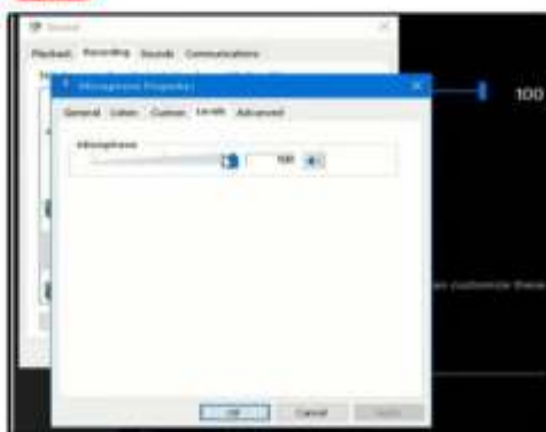
Step 2



Step 3



Step 4



If the microphone cannot be used to your device, please check if your device has set itself correctly with the microphone. If not, please follow the step to setting it.

Step 1: Open your control panel, and click on "sound", a window pops up.

Step 2: Select the recording, you will see the microphone is set up or on default.

Step 3: Double click the microphone if it is already connected., and then setting your microphone properties.



Detail presentation

Good products see the gap, from the details



Adjustable clamp

The filter cover and microphone line can be fixed at the same time, with built-in shock pad.



Microphone & shock mount

Reduce the noise caused by the slight movement of the device itself, greatly improving the sound recording effect.



Filter

Avoid the air flow sound when speaking, and improve the effect of human voice.



Bracket holder

Built in damping tray, strong support and firm fixation.



Bracket turning structure

Durable, can withstand more than 80,000 fold operations.



Alloy spring

Lock lock is fixed, pulling is smooth and durable.



Folding bracket

Fold - save space

Stretch - adjust microphone position freely



When the microphone is placed in front of the user, clear human voice can be collected and the environmental noise can be reduced at the same time.



When the microphone is placed above the user, the overall sound of the environment can be collected, while taking into account the voice of people and environment, making the video production more realistic.

FAQ:

Q:Is the microphone usable without phantom power?

A:Yes.But with a phantom power will be better.It has noise cancelling function.

Q:How many volts is the phantom power?

A: 48V

Q:What is the connector on the computer?

A: 3.5 jack



Q1: If the microphone is not working, what should I do?

1. Unplug the cable to check whether the pins at the bottom of the mic are loosened.
2. Restart computer and re-plug the mic to other port.
3. If the "PnP Audio Device" appears in the sound settings of computer (below are the methods how to get to sound settings), the mic is able to work.

(Windows: Right click speaker icon on right corner of computer → "Recording Device"

Mac: Click "System Preferences" → "Sound" → "Input")

Q2: If the mic has hissing what can I do?

Answer: The reasons are manifold, we're not sure what makes the mic perform bad, though we hope you can try out the suggestions below to see if they can help.

1. Re-plug the cable into the microphone. If the cable gets loose, noise is easily generated or transmission of signal may run into problem.
2. Reset computer and re-plug microphone into other port.
3. Place it not too close to any power source or computer host. Check whether there's smart-phone near by the cable.
4. Set the on-body control of mic and input/output level of computer at 50%-75%. Volume is the culprit for noise.

(Windows: Right click speaker icon on right corner of computer → "Recording Device"/"Playback Device" → right click "USB PnP Device"/default speaker → "Properties" → "Levels". If there's "Microphone Boost", turn it to 0-10dB.

Mac: "System Preferences" → "Sound" → "Input"/"Output" → "Input Volume"/"Output Volume")

5. (If using Windows computer,) disable all sound effects.

(Right click speaker icon on right corner of computer → "Playback Device" → right click the default loudspeaker → "Enhancements" → click "Disable all sound effects".)

Hope these methods could help eliminate noise and make the mic sound better.



Q3: If the mic disconnects itself without warning, what can I do?

Answer: There are two reasons for this situation. One is that the poor connection. The other is that the cable is broken. If you have tried to replug the cable into the mic, and plug the mic to other port, then it will be the problem of the cable. Just email us so that we can replace a new cable for you. Then the mic should work well again.

