



MiPod Ultra Remote Series 1 User Manual



Contents

1. Safety Precautions.....	3
2. Getting Started	4
2.1 Basic Information	4
2.2 In the Box.....	4
2.4 Installation.....	4
Location.....	4
Securing.....	4
Plumbing	5
Wiring.....	6
Sealing Cedar Panelling	7
Installation Checklist	8
2.4 First Start	9
3. Technical Data	10
3.1 Specifications	10
3.2 Dimensions	11
Outer	11
Inner	11
5. Operation	13
5.1 Pump	13
5.2 Lighting	13
6. Maintenance.....	14
6.1 Water Quality.....	14
6.2 Cleaning.....	14
Inner Surface	14
Outer Cladding	14
6.3 Transportation	14
6.4 Replacing Internal Parts.....	15
7. Troubleshooting	15

1. Safety Precautions

Ensure you read this manual in full before installing your new MiPod Ultra.

Instructions given within this manual must be followed. Failure to do so will result in warranty being voided.



This product must be installed by a qualified tradesman in accordance with this installation guide.



Modification to the internal piping and electrical equipment is not covered under warranty, unless prior written approval from iCoolSport is given.



Where required by the Regulatory Authority, all relevant permits, and notices to carry out the work, should be obtained prior to commencing installation of this product.



Prior to installation, the premises and floor structure should be inspected to ensure the space is sufficient for installation of this product.



All electrical wiring must comply with AS 3000 and/or other local regulations. All electrical work must be carried out by a licensed electrician.



In order to avoid the possibility of hyperthermia (heat stress) occurring it is recommended that the average temperature of spa-pool water should not exceed 40°C.



Warning: Wiring must include an RCBO.



Warning: Wiring must contain an insulation switch that provides contact separation in all poles.



Warning: Unit must be connected to protective earth.



Warning: Isolate and disconnect all power before opening unit for servicing.



Warning: Before obtaining access to terminals, all supply circuits must be disconnected.

This appliance is not intended for use by persons (including children) with reduced physical, sensory or mental capabilities, or lack of experience and knowledge, unless they have been given supervision or instruction concerning use of the appliance by a person responsible for their safety.

Children should be supervised to ensure that they do not play with the appliance.

2. Getting Started

Welcome to your new MiPod Ultra Remote.

Before getting started, please inspect the package contains everything listed in 2.2 *In the Box* and that there is no damage from transportation. Contact iCoolSport for any missing parts or any damage during transportation.

Before Installation, inspect the internal bath surface for any damage. If there is damage, do not proceed with installation and contact iCoolSport. Product damages will not be covered under warranty after installation.

It is highly recommended that all surfaces of the bath are covered during installation to protect it.



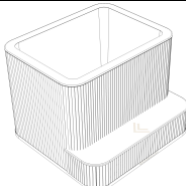

All electrical and plumbing work must be completed by licensed technicians in accordance with all applicable standards and local regulations.

2.1 Basic Information

The MiPod Ultra Remote is a complete package designed to be connected to an external iCoolSport heat pump system. The bath is installed with a pump built in under the step with all internal plumbing already completed.

Simply plumb in external equipment and connect the pump to your chosen iCoolSport heat pump and enjoy the luxury of the MiPod Ultra!

2.2 In the Box

Part Name		Qty	Part Name		Qty
MiPod Ultra Remote		1	User Manual		1

2.4 Installation

Location

The location for the MiPod Ultra must be adequate to support the weight of the bath when filled. This must be checked in accordance with any local regulations.

Access to drainage is a requirement to allow the units floor drain to be plumbed into waste.

The MiPod Ultra Remote can be placed in any position, as close to any walls as required.

It is important that any local regulations required for the installation of the MiPod Ultra bath are met.

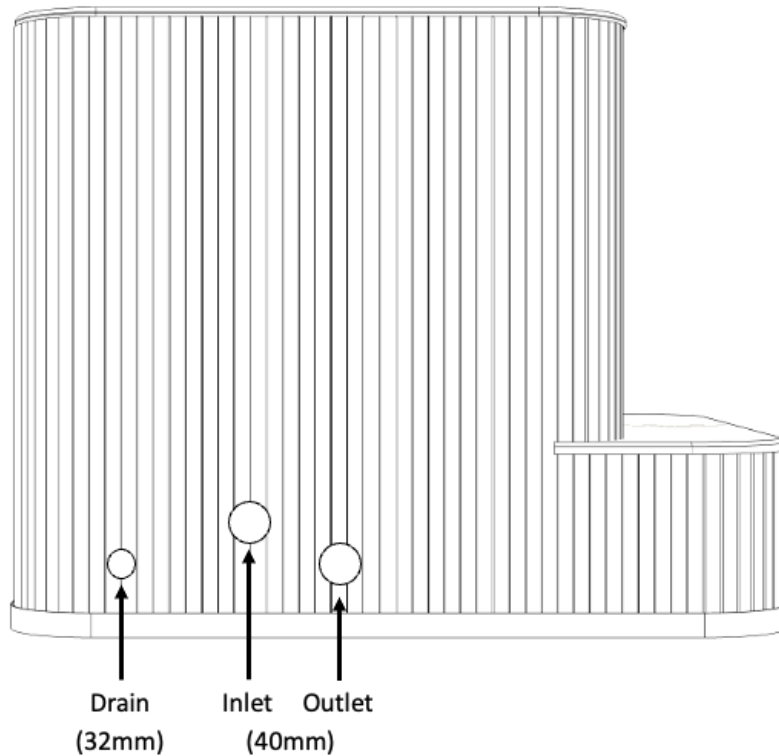
Securing

The MiPod Ultra is a free-standing bath and does not require any securing to the floor or walls. Ensure the floor is a level surface to ensure weight is distributed through to the floor evenly. Failure to do so may result in cracking of the bath.

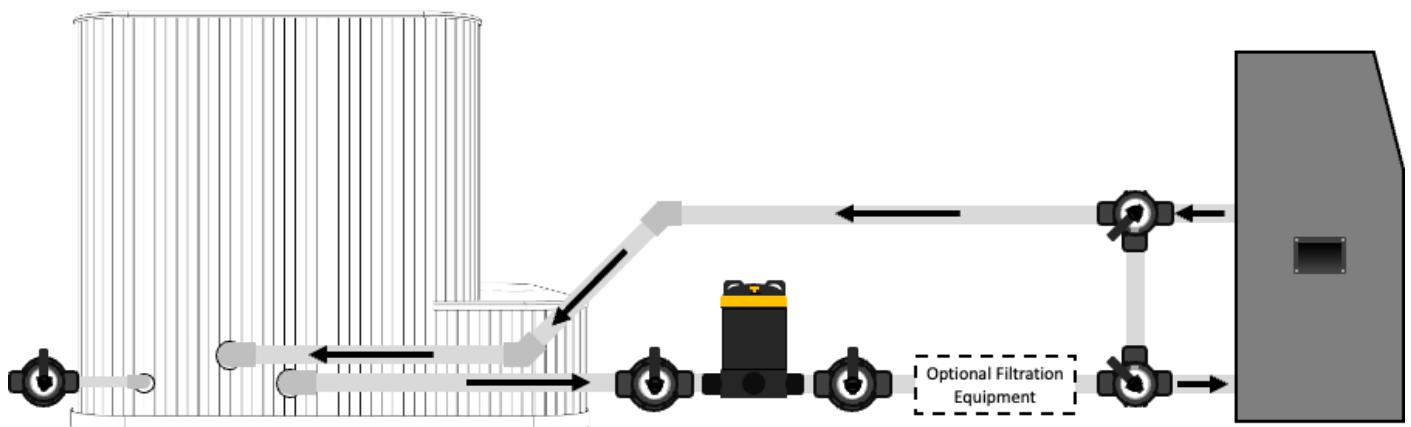
Plumbing

The MiPod Ultra Remote connects externally to an iCoolSport heat pump system through 40mm PVC pressure pipe. The external plumbing is a great place to add in optional extras such as filters and water quality equipment.

A drain is fitted to the bath through the floor and its connection is located on the left or right side (depending on how the bath was ordered). The drain uses standard 32mm piping.



Warning: The external drain plumbing must contain an inline valve to isolate the bath. The included floor drain is for aesthetic purposes only and in the even someone is to accidentally open it, an external valve will prevent water draining.



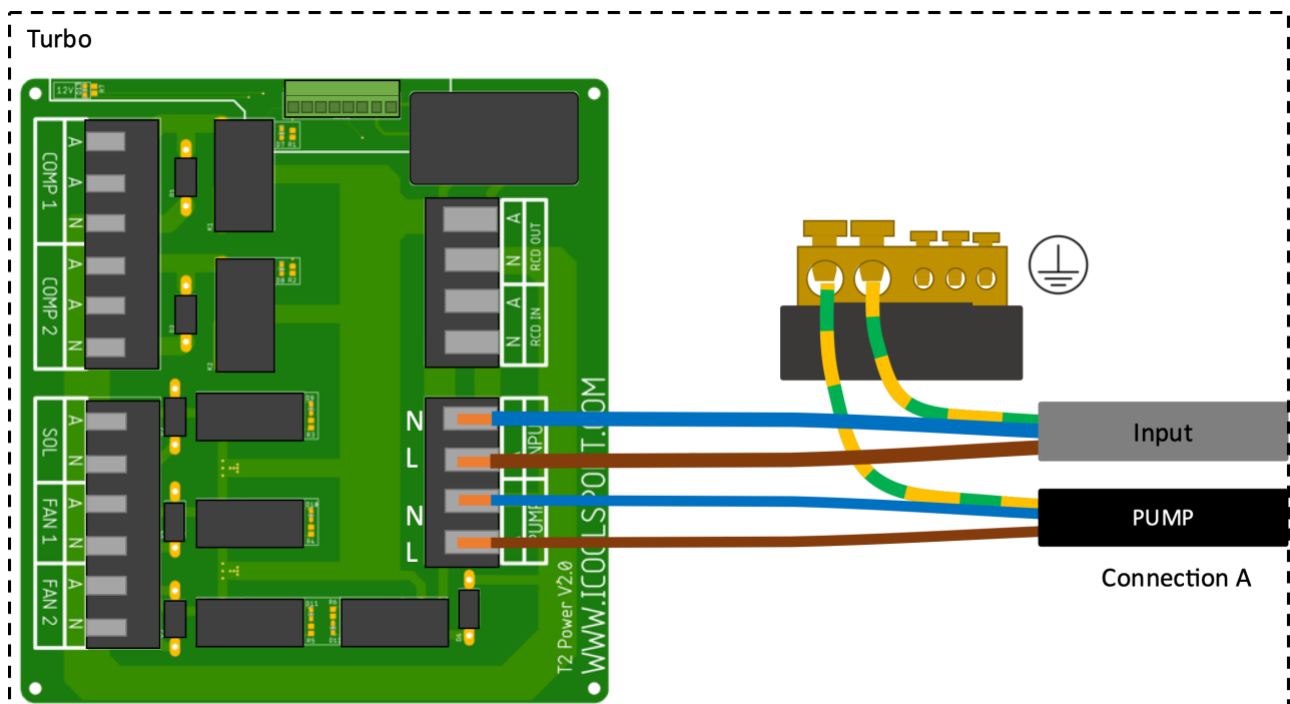
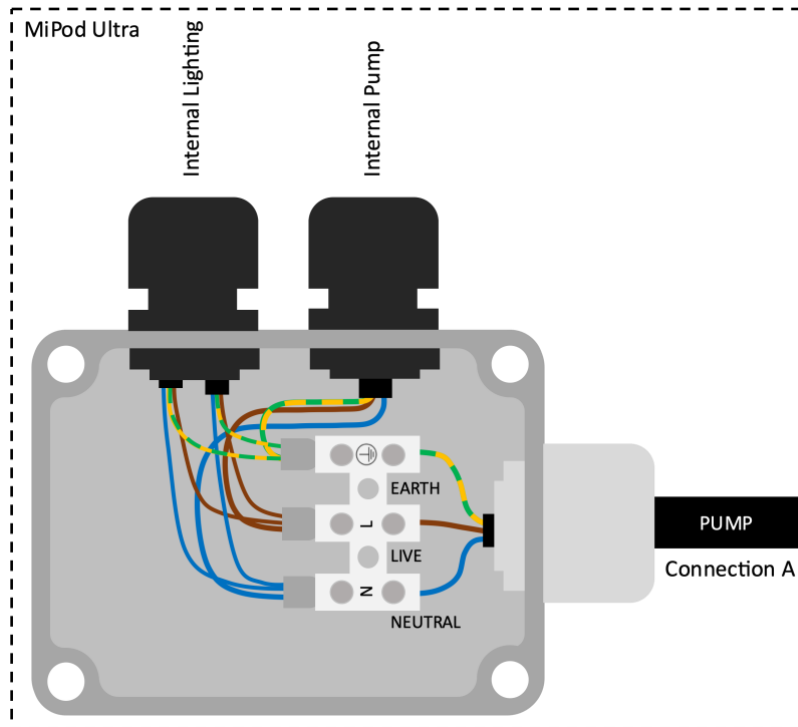
Wiring



All electrical and plumbing work must be completed by licensed technicians in accordance with all applicable standards and local regulations.

The MiPod Ultra Remote requires its internal pump to be wired directly to the pump output of your chosen iCoolSport heat pump for correct operation. The bath must be connected to the heat pumps earth to ensure the bath is correctly bonded to earth for protection.

The diagrams shown below outline the connections required to connect the MiPod Ultra Remote to the iCoolSport Turbo range. Complete a connection between points marked "Connection A" with a 3 core cable with a minimum gauge of 1mm². The junction box can be found under the front step.



Sealing Cedar Panelling

The MiPod Ultras come in the option of cedar cladding. iCoolSport source western redwood cedar sustainably for the use of cladding our Ultras. The cedar will arrive in a raw, untreated state which will allow you to decide on the finish to match your installation.

To ensure that this cedar lasts for the life of the unit, it is important that the cedar is given proper care for the chosen environment.

Untreated cedar or cedar coated in clear stains will suffer from a greying of the timber if left in UV light. Timber will darken in the UV light quickly and over years will eventually turn grey. To avoid this, it is essential for the cedar to be protected with a tinted stain or a wood oil.

iCoolSport does not recommend the use of anything that will leave a film on the wood, such as lacquers or paints. This is because the UV will break down these coatings and are very difficult to maintain long term.

It is recommended that a wood oil is used. It is important to follow the specific requirements of the product chosen for protecting the cedar, but typically wood oils require a 12 month follow up treatment and then retreatments every 3-5 years to protect it.

Avoid natural oils for protecting the cedar, such as linseed oil.

For more information on cedar and how to protect it, visit www.icoolsport.com.

Cedar Accessories

If a cedar floor mat is purchased as an additional accessory with your MiPod Ultra, do not seal this mat with any stains or oils. It is essential for the cedar to be left in its natural untreated state.

The cedar will work as a natural absorber of water when left in its natural state and will also give off a nice natural scent when wet. Cedar will naturally resist mould and mildew, keeping the area around your MiPod ultra clean!

Clean this cedar with water as needed. If the cedar becomes dirty, leave it to dry in the sun and then give it a light sand with 200 grit sandpaper to bring it back to its original finish.

Installation Checklist

- ☐ MiPod Ultra is placed on a level surface that is adequate to support the weight of the bath when filled.
- ☐ Cedar Panelling is sealed with a stain.
- ☐ Plumbing is connected to external filtration and iCoolSport heat pump, in the correct flow direction.
- ☐ Electrical connections between MiPod Ultra and external iCoolSport heat pump are complete.
- ☐ 32mm external drain connection is plumbed with external valve.
- ☐ All external plumbing is insulated.
- ☐ Bath has been filled with water and testing before enclosing unit.

2.4 First Start

On first start, the bath may require priming to remove trapped air in the lines. It may take a few starts to push this air out.

To help with the process, it is recommended to fill the bath up just below the top return fittings so that water returning into the bath can be seen visually.

If the bath is struggling to push out the air, it may be necessary to partially open the connections on the pump inside the unit or on any of the external equipment that has been plumbed in to help release the air as the pump starts.

Once water begins to flow, allow it to do so for some time and continually inspect all internal and external plumbing for signs of leaks.

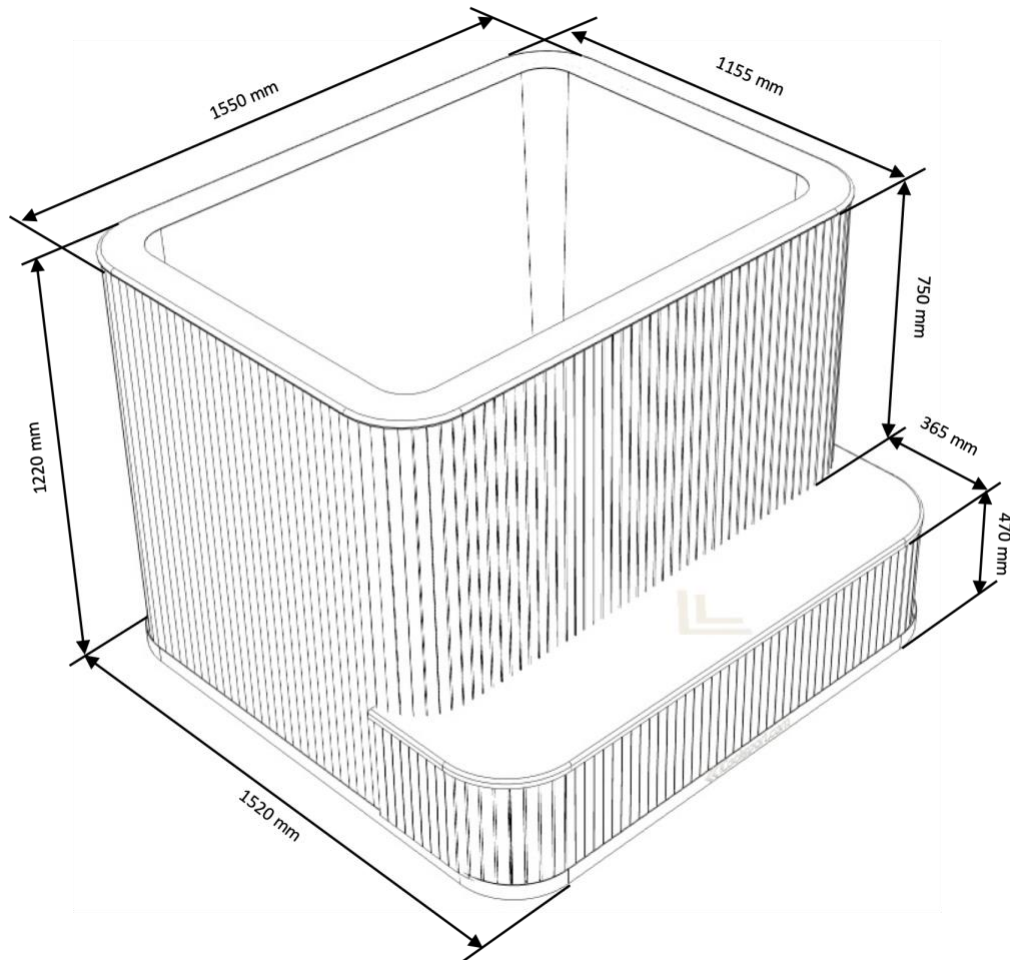
3. Technical Data

3.1 Specifications

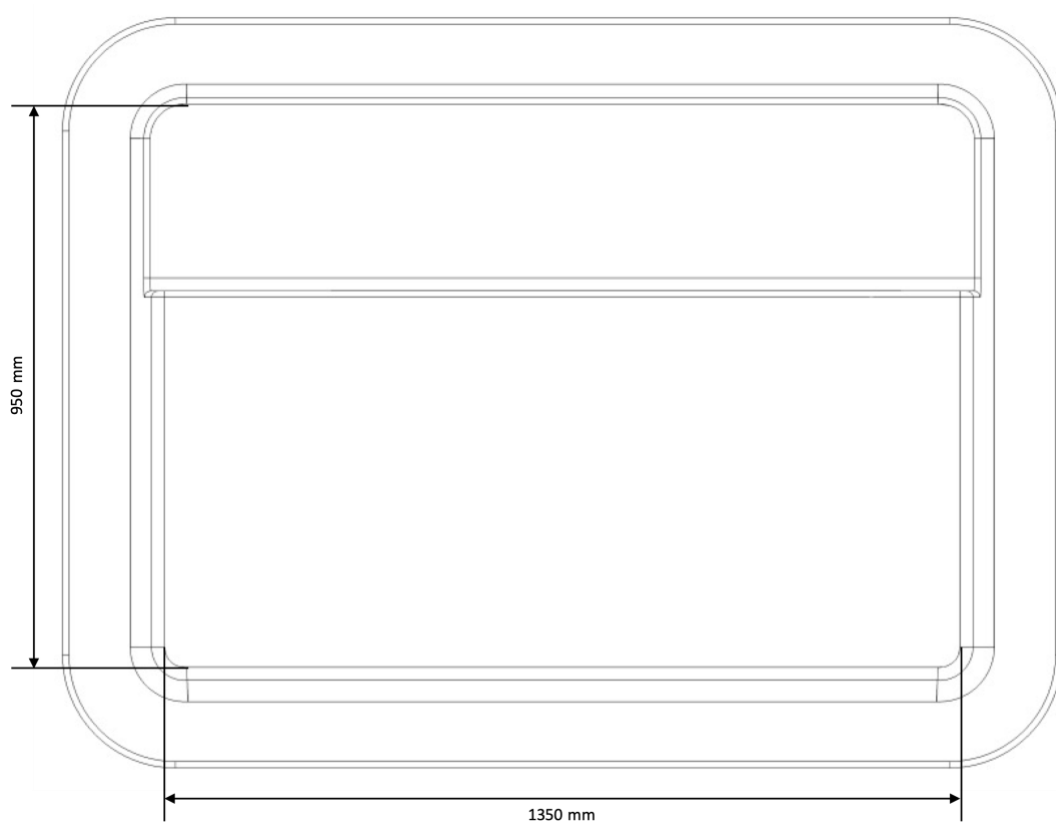
Specification		Unit	Value
Voltage ^{*1}		V	220-240
Frequency ^{*1}		Hz	50
Power ^{*1}		kW	0.43
Run Current		A	1.8
Start Current		A	5
Noise		dB(A)	56
Dimensions (L x W x H) ^{*2}		mm	1550 x 1520 x 1220
Water connection type	Inlet/Outlet	mm	40mm Class 12 Pressure
	Drain	mm	32mm
Weight		kg	
Water Volume		L	800
Water Temperature Range	Min	°C	2
	Max		40
Notes: *1: Based on Davey QB035-AMP pump. Values may differ if a custom pump is used. *2: Dimensions are within ±10mm.			

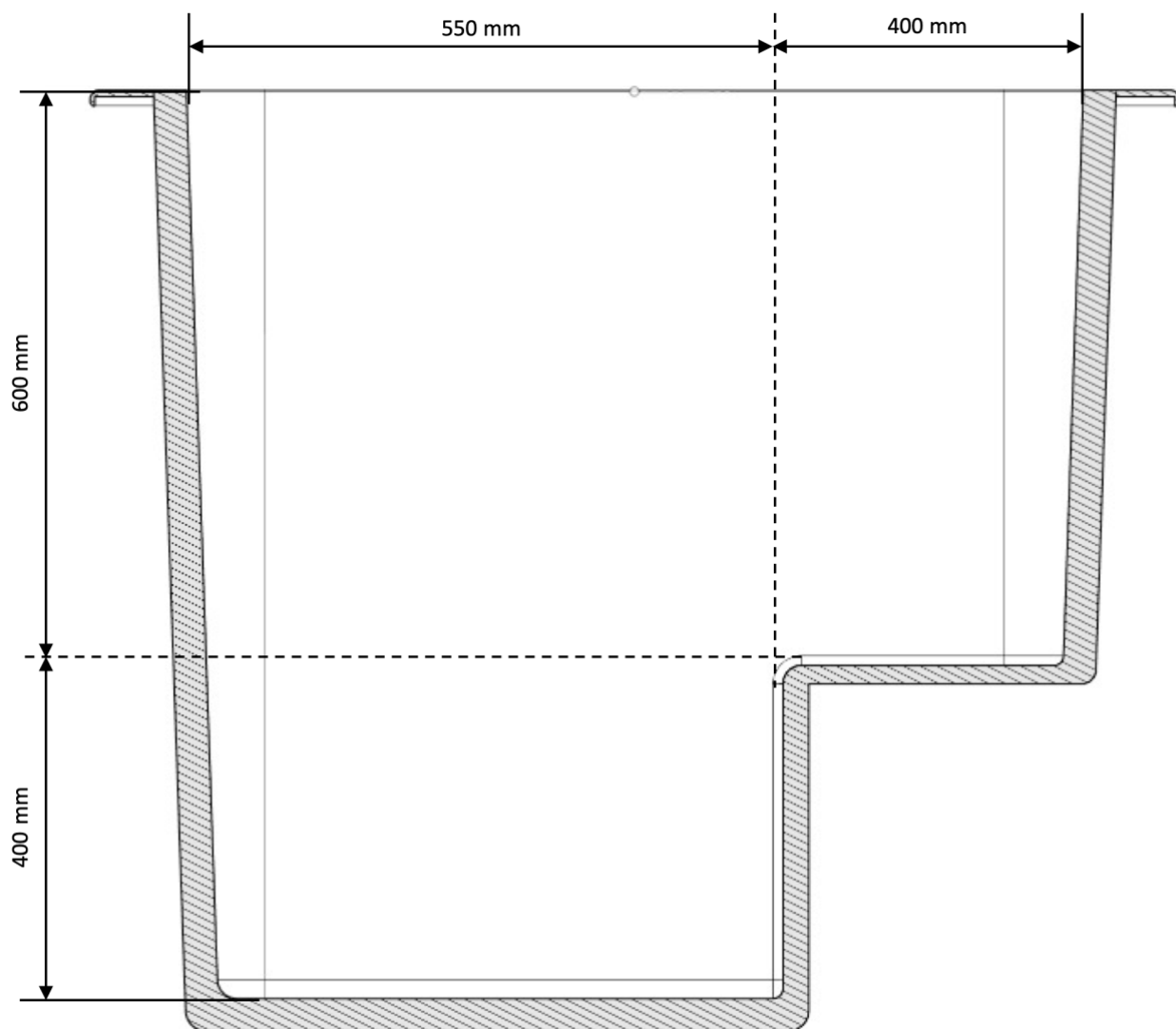
3.2 Dimensions

Outer



Inner





5. Operation

5.1 Pump

The MiPod Ultra Remote pump is controlled by the chosen external iCoolSport heat pump. All pump operation is done automatically this way.

5.2 Lighting

Under glow and internal water lights on the MiPod Ultra Remote will come on when the pump is turned on. If the pump is connected to an iCoolSport heat pump, lighting will remain on even when the water is at temperature, as long as the heat pump is in its started.

6. Maintenance

6.1 Water Quality

Never use bromine to maintain water quality in any iCoolSport bath. The use of bromine may result in permanent damage to external equipment.

To sanitise the water, there are many options available. It will also depend on external filters and sanitisation equipment that has been installed.

Generally, it may be required for small doses of chlorine to be used. iCoolSport recommend contacting a local pool shop to test a water sample and gain advice on chemicals to use to maintain water for the intended use of the bath. Alternatively, test strips can be purchased for testing manually.

For commercial use, the internal pump should be left running 24/7 through a filter. The filter should be cleaned weekly at a minimum and increased as required.

Often, local laws and regulations require constant testing and record keeping for commercial use.

The use of external sanitisation equipment, such as UV and ozone generators can help reduce the amount of chemicals required.

6.2 Cleaning

Inner Surface

To clean the surface of the bath and its fittings, use warm soapy water or non-abrasive household detergent with a soft cloth.

The suction fittings have a cover that can be removed to clean any build-up of hair or other debris. To remove the suctions, there is a Philips screw located on the front plate that needs to be removed. The cover will then fall away.

The recirculatory system should be flushed regularly with a spa system cleaner to remove a build-up of debris and oils.

It is important that the system is cleaned regularly and in line with all local laws and regulations.

Outer Cladding

To clean the cedar, follow the instructions given with the chosen product used to seal the cedar.

In general, the cedar can be cleaned by washing it down with water only. Avoid the use of any soaps or harsh chemicals as this can destroy the finish.

Never use any brushes or abrasives to scrub the cedar.

Follow the reapplication guidelines of the chosen protectant to ensure the cedar maintains its quality for the life of your MiPod Ultra.

6.3 Transportation

It is recommended that the MiPod Ultra Remote is transported in its original packaging to ensure that the bath is completely protected.

If the package is no longer available, it is recommended that the unit is placed in a crate for transportation with a courier. Otherwise, ensure that all sides and the top are wrapped with bubble wrap and moving blankets to ensure the best protection during transportation.

Be careful to not strap the unit around the cladding, as this is likely to result in permanent damage to the cedar.

6.4 Replacing Internal Parts



Warning: Relevant maintenance must be performed by all relevant certified trades. Do not open this unit without proper licensing in accordance with all local laws and regulations.



Warning: Isolate and disconnect all power before opening unit for servicing.

To replace any internal parts, please contact iCoolSport directly for information.

7. Troubleshooting

Problem	Reason	Solution