

# Dental Pod Pro<sup>®</sup>

ZIMADENTAL

The Ultimate Oral Appliance Cleaner



# Contents

Introduction	3
Technology	7
How to use	13
FAQs	21
Safety info	29



Our mission to offer premium, proven solutions for the challenges and inconveniences associated with oral appliances has earned us global recognition for transforming the oral appliance experience.

“This is how you  
do aligners right”

GQ

“My retainers looked  
better than ever”

Who What Wear

“I found the Dental  
Pod to be absolutely  
wonderful”

Ask the Dentist

“The Dental Pod offers  
a precise and effortless  
cleaning solution”

British Dental Association

# Never brush again

Through half a decade of research and innovation, we have made clinical hygiene accessible, revolutionizing oral appliance care for everyone.



## Remove plaque

The Dental Pod Pro is able to disrupt and destroy thick plaque biofilms that build up over time.



## Eliminate bacteria

The Dental Pod Pro kills bacteria through cavitation, free radical production, and sono-bactericide.



## Save time and effort

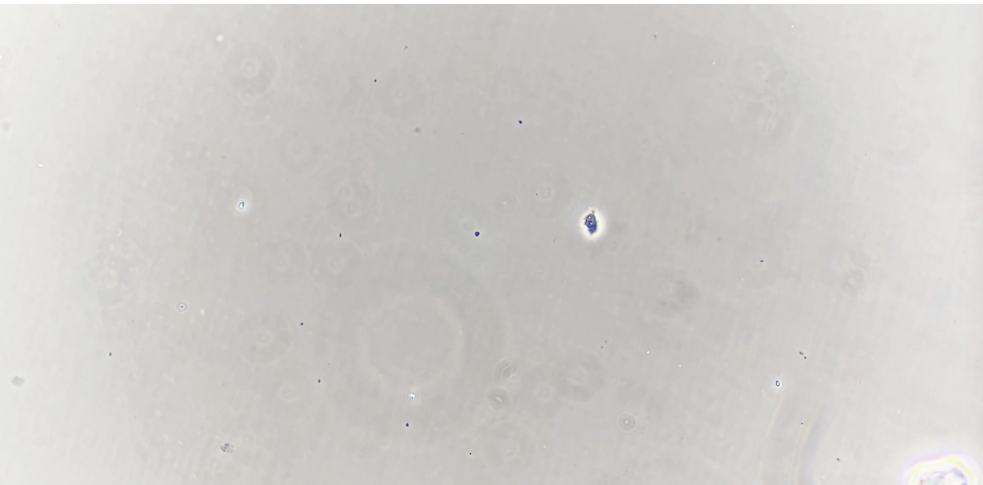
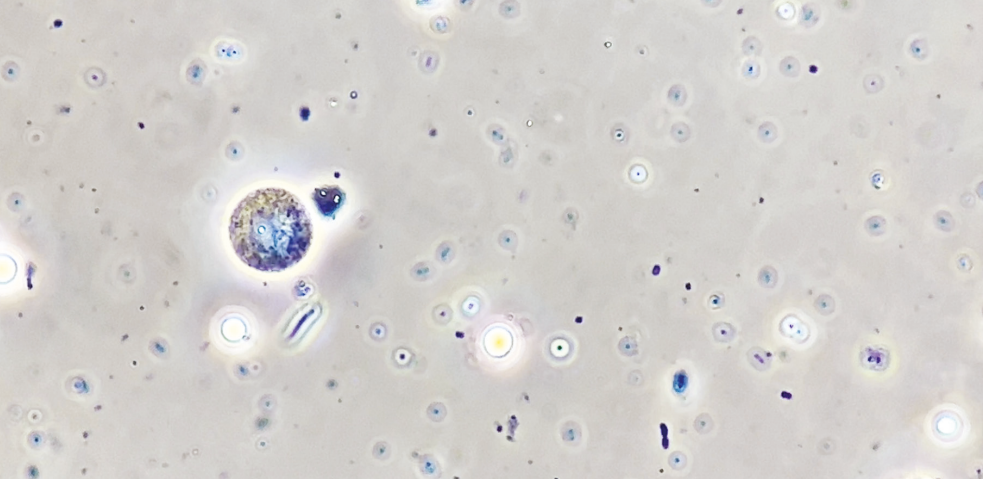
Set and forget. After activation, the Dental Pod Pro automatically stops after the thorough cleaning cycle is complete.



## Remove stains

The Dental Pod Pro effectively degrades food, drinks, and cosmetics stains leaving your appliance clearer after each use.





## Proven results

The Dental Pod Pro is clinically proven to effectively eliminate microorganisms, preserve appliance clarity, reduce odors and enhance oral health.

### New appliances

We recommend using the Dental Pod as early on into your oral appliance journey as possible. Starting a regular, reliable cleaning routine will prevent stains and plaque from building up, and will help to avoid potential oral health issues. The Dental Pod works particularly well when cleaning newer oral appliances, eliminating grime and bacteria with ease.

### Older appliances

Over time, stains and microorganisms can penetrate oral appliance materials like acrylic. For older appliances with stubborn stains, we suggest soaking with a Zima sterilizing tablet in the Dental Pod for 10 minutes, before running a "Max Clean" cleaning cycle. Repeating this regimen for two weeks can notably enhance the cleanliness of older oral appliances.

# How it works

The Dental Pod Pro generates ultrasonic waves within a dynamic frequency range of 42,000Hz to 45,000Hz.

In a process known as cavitation, ultrasonic waves generated by the Dental Pod create small bubbles within the cleaning solution. These bubbles rapidly collapse, generating miniature shockwaves with sufficient force to disintegrate microorganisms such as bacteria and dislodge stains and debris.

This unique process aids in the cleaning and sanitizing of your oral appliances, effectively removing microorganisms and eliminating stains, leaving them refreshed and clean.

The Dental Pod may generate some noise during the cleaning cycle. This is a normal result of the interaction between ultrasonic waves and various materials.







## Under the hood

Over 50 prototypes and 2 years of product development have informed the design and improved functionality of your Dental Pod Pro.

### Modular Design

The Dental Pod Pro's unique and innovative modular design allows for the easiest user experience.

### Increased Power

New patent-pending technology creates a higher cavitation pressure from the ultrasonic cleaning effect, resulting in a more powerful clean.

### Noise reduction

The Dental Pod's patent-pending sound reduction system permits a discreet hygiene experience.

### Dual Modality

The Dental Pod Pro provides Max Clean mode, more aggressively lifting stains and long-term plaque build up resulting in a more powerful clean.

### Dynamic feedback

The Dental Pod can automatically adjust cleaning frequency within a range for optimal cleaning efficacy and safety.

### Heat regulation

The Dental Pod actively dissipates heat to protect oral appliances.

# The Dental Pod Pro's Design

The Dental Pod Pro is the ultimate oral appliance cleaner, offering unparalleled cleaning efficacy for those who demand the best in oral hygiene.

This advanced model represents a significant technological evolution from its predecessor, introducing Max Clean mode, and an intelligent modular design for improved ease of use when refilling your Dental Pod, so you don't have to unplug your device with each use.

With its sophisticated technology and aesthetic design, the Dental Pod Pro sets a new standard in care and cleanliness for dental appliances.

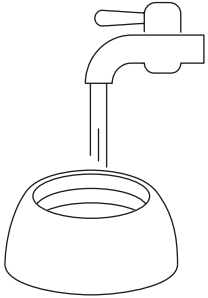
- ⚡ Dual cleaning modes
- ⚡ Enhanced cleaning
- 🔧 Modular design
- 🌡️ Improved heat regulation
- ↗️ Increased capacity
- 🛡️ Antibacterial steel tank



# How to use

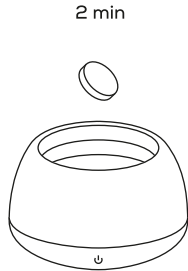
## Step 1

Remove the tank from the base and add cold water to the tank, filling to between the min and max lines.



## Step 2

Place a sterilizing tablet in the tank and place the tank back on the power base. Allow the tablet to dissolve for 2 minutes.



## Step 3

Submerge your oral appliance(s) in the tank, ensuring no air bubbles are trapped.



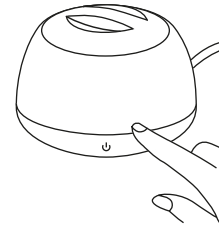
## Step 4

Replace the lid and connect the base to a power outlet using the provided cable. The base can be left connected to power in between cleans.



## Step 5

Select the cleaning cycle by tapping the power button once for a regular 5 minute cycle, or tap twice to activate the 15 minute, Max Clean mode.



## Step 6

Retrieve and rinse your clean appliance and discard the used solution.







1. Zima Dental. TRAD03 Study. 2023.
2. Lombardo L, et al. Prog Orthod. 2017; 18(1):26.

## What it can clean

Our data<sup>1</sup> and third-party studies<sup>2</sup> confirm that the Dental Pod is the most effective cleaning method for retainers, aligners, dentures, guards, and more.



### Retainers

Hawley, Essix, clear plastic and more.



### Aligners

All major clear aligner providers.



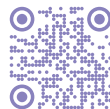
### Mouthguards

Snore and sleep apnea, grind, sports mouthguards and more.



### Dentures

Acrylic, cast metal, flexible dentures and more.



Scan the QR code to see what a Dental Pod can clean.

# Max Clean Mode

To combat accumulated plaque, thick bacterial biofilms, and persistent stains , Max Clean mode delivers a deeper clean to far exceed standard cleaning techniques

This advanced mode utilizes precise ultrasonic frequencies ranging from 42k to 45k during three 3-minute cycles, interspersed with two 3-minute periods of intensified ultrasonic bursts, specifically targeted at the most stubborn build-ups. Enhanced heat regulation ensures each 15-minute session optimally breaks down tough grime and bacteria, without damaging your appliance, redefining cleanliness for oral appliances.

These two types of ultrasonic cleaning methods complement each other well, one acting as a general scrubber of your appliance, while the other penetrates deeper into the debris, acting like a chisel to break down long term build up.

For older appliances, we recommend using Max Clean mode regularly to break down long term build up. To simply maintain your appliance, we recommend using the standard mode daily, and the Max Clean mode weekly, to prevent longer term stain build up.





## Sterilizing tablets

Our tablets are engineered to enhance the Dental Pod Pro's cavitation cleaning effect, removing 99.9% of bacteria and pathogens and giving a minty freshness to your appliance. Think of the Dental Pod as a toothbrush and the tablets as toothpaste.

Our ingredients have been carefully selected to ensure safety for you, your appliance, and your Dental Pod.

We recommend using tablets every time you wear your appliance for more than 6 hours, as studies<sup>1</sup> have shown that at this time point bacterial biofilms start to form on your appliance, which are significantly harder to clean.



Scan the QR code to order more tablets.

1. **Low B, et al. Eur J Orthod. 2011;33(5):577-83.**

# FAQs

## When should I use Max Clean mode?

If you have an older appliance, we recommend using the Max Clean mode regularly to break down long term build up. To simply maintain the cleanliness of your appliance, we recommend using the standard mode daily, and the Max Clean mode weekly to prevent longer term stain build up. Press the on button twice in quick succession to activate Max Clean mode. Max Clean mode takes 15 minutes.

## Can the Dental Pod Pro clean jewellery?

This is not what the Dental Pod was designed, engineered and tested to clean. However, many customers have let us know that they have had success cleaning jewellery. The underlying cleaning method of ultrasonic cavitation is something that has been used to clean jewellery by professionals for decades. We successfully tested cleaning precious metals in the Dental Pod to ensure customers with grills could clean their appliances safely and effectively.

## What if I get water on the base or tank power connector?

Mop up any water spillage with a dry cloth, ensuring there is no moisture left on the power base or on the metal connector before placing the tank back on. Do not run a cycle when there is water in the centre circle of the base (where the no water sign is located).

## What temperature water should I use?

Always use cold tap water in your Dental Pod. Using hot water when you start a cleaning cycle means there is a risk that the water temperature can rise above the recommended safe level for some oral appliance manufacturers. Please note that the Dental Pod has an active heat regulation system to help reduce this risk.

## Should I clean my oral appliance everyday?

Yes, daily cleaning of your oral appliance with the Dental Pod is recommended to ensure oral hygiene. Its ultrasonic method is safe for all appliance types and can be used regularly without causing any damage.

## Will the Dental Pod damage my dental appliance?

No, the ultrasonic cleaning method is completely non-abrasive. It creates millions of microscopic bubbles which gently but thoroughly clean the entire surface of the appliance causing no damage. The Dental Pod is designed to safely clean all kinds of materials ranging from metal to aligner plastic.

## Can I run multiple cleaning cycles?

Yes, you can run up to two consecutive cycles of the standard cleaning mode, ensuring that you have used cold water. If you'd like to run additional cycles or multiple cycles on Max Clean mode, you must replace the water and wait at least 5 minutes to ensure the longevity of your device and your appliance.

# FAQs

## Why do I need tablets too?

Our tablets are specifically engineered to enhance the cavitation cleaning effect of your Dental Pod, eliminating 99.9% of bacteria and pathogens, and leaving your oral appliance with a fresh, minty taste. Think of the Dental Pod as a toothbrush and the tablets as toothpaste. We recommend using a tablet every time you wear your appliance for more than 6 hours, as studies have shown that at this time point bacterial biofilms start to form on your appliance.

## Can I leave my appliance in the pod overnight?

The Dental Pod can act as a great storage solution for your appliance, but always pour away the solution before doing this for optimal hygiene.

## Can I use sterilizing tablets from other brands?

No, some other brands have been found to damage and sometimes break the Dental Pod. Our tablets are safe to use with the Dental Pod and are also specifically designed to enhance the cavitation cleaning effect of the device. For the safest and most effective cleaning experience, use Zima Dental's sterilizing tablets with the Dental Pod.

## What should I do if I get water in the power inlet?

Leave the Dental Pod unplugged in a warm and dry area. Wait at least 48 hours before plugging your device back in, and check that the inlet and cable are completely dry before use.

## Can you put two appliances in the Dental Pod at once?

Yes, the Dental Pod is designed to effectively clean a pair of appliances at the same time. We do not recommend cleaning appliances from multiple patients at the same time as this can increase the risk of infection.

## Can I share the Dental Pod with my family?

Yes, you can share your Dental Pod. However, please note that this can increase the risk of infection. To reduce this risk, change the water and clean the Dental Pod between uses. We also strongly recommend using our sterilizing tablets to prevent the transfer of bacteria and other pathogens between users.

## What if I see no visual results after a week?

If no aesthetic improvement is noticed after a week, pre-soak your oral appliance with a sterilizing tablet in the Dental Pod for 10 minutes. Then, conduct up to two cleaning cycles. This enhanced routine might need to be followed for a minimum of two weeks to observe visual changes. Even without visible results, the Dental Pod ensures removal and cleaning of microorganisms at a microscopic level.

## How do I clean the Dental Pod after use?

Clean the Dental Pod's stainless steel tank daily with a quick rinse with water and weekly using a soap and a damp soft cloth before rinsing. It's designed for easy and swift cleaning.



# In the box

Our industry-leading design and user-experience experts developed the Dental Pod Pro to be as easy to use as possible.

- 1 Lid
- 2 Ultrasonic tank
- 3 Power button
- 4 Cable
- 5 Power base



Box contents: Ultrasonic tank, power base, cable and sterilizing tablets.



## Zima Go®

While the Dental Pod delivers clinical hygiene at home, Zima Go provides on-the-go UV sterilization for 360 oral appliance care.

UVA and UVC light disinfect oral appliances in an extremely thorough sterilisation cycle, all at the touch of a button. Zima Go's smooth sliding mechanism allows one-handed use and its strong yet lightweight aluminium alloy shell (commonly used in medical and military applications) provides outstanding protection for your oral appliance.



Scan the QR code to learn more about the Zima Go.

# Safety info

1. Do not use or place the device near water sources.
2. Do not retrieve the device from water. If immersed, disconnect immediately.
3. Do not use the device while bathing.
4. Disconnect the device immediately after use.
5. Use only the provided power supply.
6. Do not insert foreign objects into the power outlet.
7. Store in a dry, safe place.
8. Do not leave the device unattended while powered.
9. Disconnect the device before refilling and avoid overfilling.
10. Devices are not suitable for children under the age of 18.
11. Follow intended use guidelines; do not use unapproved accessories.
12. Stop using if the device is damaged or malfunctioning.
13. Keep hands away from ultrasonic tank during operation.
14. The device may cause radio disruptions.
15. Avoid using the device if you have a pacemaker.
16. Keep the device away from hot surfaces.
17. Use the device in safe temperature conditions.
18. Only use cold water with the device.
19. Operate the device on solid surfaces.
20. Use the indicated amount of water in the device.
21. Do not run the device without water in the tank.
22. Alterations may affect functionality, void warranties and liabilities.
23. Dispose of the device responsibly as per local and national regulations.
24. Use only approved cleaning agents to prevent tank damage.
25. Design and specifications may be subject to change.

# Product info

Model	Dental Pod Pro
-------	----------------

Size	123*123*90mm
------	--------------

Weight	525g
--------	------

Case material	ABS / Silicone
---------------	----------------

Power supply	239V / 50Hz
--------------	-------------

Power input	DC 12V / 2A
-------------	-------------

Tank size	85 *85 *40mm
-----------	--------------

Tank volume	190ml
-------------	-------

Max water line	150ml
----------------	-------

Tank material	Anti-bacterial Stainless steel
---------------	-----------------------------------

Frequency	42,000Hz - 45,000Hz
-----------	---------------------

Cleaning cycle	5mins / 15mins
----------------	----------------

# Dental pod Pro®

Powered by Zima Dental®



## Support

For customer support please email:  
[support@zimadental.com](mailto:support@zimadental.com)



## Feedback

Share your experience by leaving  
a review on our website at  
[zimadental.com](http://zimadental.com)



## Connect

Follow us on social media for even more  
tips: [@zimadental](https://twitter.com/zimadental) on all platforms.



## Share

Share your experience with family  
and friends who wear oral appliances.