



*Your* ADVENTURE

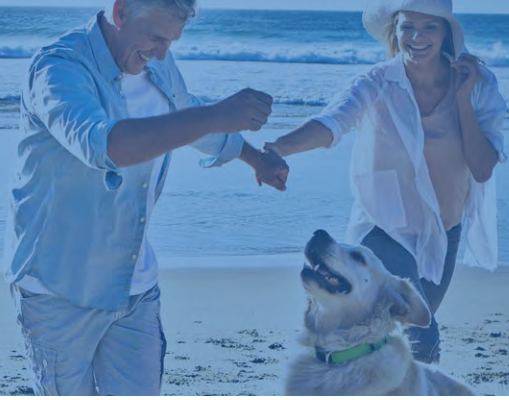
# MOTORHOMES

2018





Choose your...  
*adventure!*



## FREEDOM MOTORHOME

A fantastic first step into the motorhome lifestyle, with all the comfort you need at a very reasonable price. This lightweight, self-contained RV is an adventure waiting to be had. With enough power to get you wherever you're heading, the reliable Renault chassis makes driving there a real pleasure. A great option for people looking for a compact unit that's full of features.





# CONQUEST MOTORHOME

Our most popular range of motorhomes is perfect for the more experienced traveller and for those who have a spacious, feature-packed layout in mind. With over 40-years' experience, Jayco offers four refined, sleek and stylish layouts, making your decision an easy one.



Illustrations may show optional extras fitted to product





# OPTIMUM MOTORHOME

The Optimum Motorhome range raises the bar in luxury to the highest levels. This is the ultimate in on-the-road comfort and style. A head-turning exterior and an interior packed with comfort & quality features will inspire you to want to stay on the road for longer. The Optimum is a true home away from home, for extended travel, built on the powerful Iveco turbo diesel chassis.



Illustrations may show optional extras fitted to product



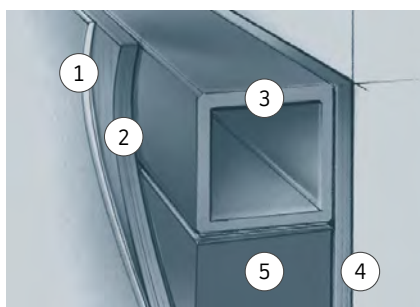


# JAYCO CONSTRUCTION



## TOUGH FRAME

Jayco's multilayered, vacuum-bonded walls are both stronger than those of conventional 'timber & tin' aluminium-clad caravans, and offer greater thermal and acoustic insulation. Motorhome models feature our 5-layer system, comprising internal wall ply, insulation, aluminium frame, external 3 mm ply and high-gloss fibreglass exterior, as illustrated.



- 1 Hail- and dent-resistant fibreglass exterior with a high-gloss, gel coat finish
- 2 External 3 mm plywood board to increase structural strength
- 3 Aluminium frame – not timber – for extra strength and longevity, plus galvanised plating for secure fitment of internal furniture
- 4 Internal 3 mm plywood board, CE-coated for maximum durability
- 5 Internal high-density polystyrene foam for superior insulation



At Jayco, we are committed to investing in newer, more advanced technology. This allows us greater flexibility in producing exciting new layouts. For example, our million-dollar investment in the custom Italian-built Double Edge banding machine allows us to maximise operational efficiency by edging two sides at once.

With over 12 CNC machines, Jayco has one of the most technologically advanced timber-processing facilities in the RV industry.

And to top it off, Jayco's lamination press is situated in a world-first, dust-free, temperature controlled room, allowing for optimal lamination of the highest quality.



# VEHICLE SPECS

- Standard
- Not available

	FREEDOM		CONQUEST				OPTIMUM
	RM.20-5 Renault Master	RM.23-4 Renault Master	FA.25-1 Fiat Ducato / Alko	FA.25-3 Fiat Ducato / Alko	IV.25-5 Iveco Daily 50c	FA.25-6 Fiat Ducato / Alko	IV.29-5 Iveco Daily 70c
Towing capacity (ball weight/braked) kg	250/2,500	230/2,300	100/1,500	100/1,500	300/3,000	100/1,500	300/3,000
Cab colour	White	White	White (opt black or iron grey)	White (opt black or iron grey)	White	White (opt black or iron grey)	White
Engine capacity (L)	2.3	2.3	2.3	2.3	3.0 Bi-turbo	2.3	3.0 Bi-turbo
Configuration	4 Cylinder	4 Cylinder	4 Cylinder	4 Cylinder	4 Cylinder	4 Cylinder	4 Cylinder
Power kW	110	110	130	130	150	130	150
Torque Nm	350	350	400	400	470	400	470
Gearbox	6 speed automated manual	6 speed automated manual	6 speed automated manual	6 speed automated manual	8 speed Hi-Matic automatic	6 speed automated manual	8 speed Hi-Matic automatic
Fuel tank capacity (L)	100	100	120	120	100	120	100
Driven wheels	Front	Rear	Front	Front	Rear	Front	Rear
Rear wheel configuration	Single	Dual	Single	Single	Dual	Single	Dual
Tyre size	225/65R16	195/75R16	225/75R16	225/75R16	195/75R16	225/75R16	225/75R16
Wheel type	Steel	Steel	Steel (alloy optional)	Steel (alloy optional)	Steel	Steel (alloy optional)	Steel w/chrome trim
Anti-lock brakes	●	●	●	●	●	●	●
4 wheel disc brakes	●	●	●	●	●	●	●
Traction control	—	—	●	●	●	●	●
Stability control	●	●	●	●	●	●	●
Driver and passenger air bags	●	●	●	●	●	●	●
Laminated windscreen	●	●	●	●	●	●	●
Power steering	●	●	●	●	●	●	●
Cabin seat finish	Cloth	Cloth	Cloth	Cloth	Cloth	Cloth	Leather
Driver & passenger swivel seats	Optional	●	●	●	—	●	—
Cabin floor carpet	●	●	●	●	●	●	●
Arm rests	●	●	●	●	●	●	●
Keyless central locking	●	●	●	●	●	●	●
Extra wide electric mirrors	—	●	●	●	●	●	●
AM/FM tuner with aux input	●	●	●	●	●	●	●
Bluetooth capabilities	●	●	●	●	●	●	●
Multifunction steering wheel	●	●	●	●	●	●	●
Air conditioning	●	●	●	●	●	●	●
Cruise Control	●	●	●	●	●	●	●
Satelite navigation system	—	—	●	●	●	●	●
Roadside assistance	●	●	●	●	●	●	●
Warranty period (years / km)	3 / 200,000	3 / 200,000	5 / 200,000	5 / 200,000	3 / 200,000	5 / 200,000	3 / 200,000

# JAYCO FEATURES

- Standard
- Optional
- Not available

Freedom  
Conquest  
Optimum

## Appliances

Air Conditioning Roof-Mounted	●	●	●
Cooktop - Smev 2-Burner (TH15 & RM20-5)	●	–	–
Cooktop - Dometic 4-Burner/Griller (RM23-4)	●	●	–
Cooktop - Thetford Induction & 2-Burner gas	–	–	●
Microwave	●	●	–
Microwave Convection	–	–	●
Fridge - Thetford N3185 3-way touch panel 174 L	●	●	–
Fridge - Dometic 8 Series 216 L 3-way	–	–	●
Generator Onan 3.6 kW	–	–	●
Rangehood 12 V with LED lights and twin fans	●	●	●
Satellite - Sphere 12 V System	–	○	●
Stereo Furrion CD/DVD/Radio with external speakers	●	●	●
TV Aerial Winegard	●	●	●
TV/DVD LED 12 V (Extra in Conquest FA25-1)(19")	19"	24"	24" & 32"
Solar System	120	160	160
Washing Machine Sphere 3 kg	–	●	●

## Comfort

Innerspring Pillowtop Mattress	–	●	●
Lift-up beds with orthopaedic bed slats	–	●	●
Upholstery - Fabric	●	●	–
Upholstery - Leather	○	○	●

## Construction

Aluminium-framed solid sandwich-panel floor	●	●	●
Aluminium frame in dinette seats and bed frames	●	●	●
Fibreglass fully insulated hail-resistant roof & walls	●	●	●

## Exterior General

Awning - Carefree Eclipse electric with LED light	–	○	●
Awning - Carefree Freedom electric box awning	23-4	●	–
Awning - Fiamma 4.0 m box	20-5	–	–
Electric Step (N/A RM20-5)	23-4	●	●

Freedom  
Conquest  
Optimum

External 240 V Double Power Point	●	●	●
External Entertainment Unit	–	○	●
External Fold-Out Table	○	○	●
External Under-floor baggage doors (N/A RM20-5)	●	●	●
Gas Bottle - 1 x 9 kg RM20-5	RM20-5	–	–
Gas Bottles - 1 x 4 kg & 1 x 9 kg	RM23-4	●	–
Gas Bottles - 2 x 4 kg (IV25-5 & Optimum)	–	●	●
Lockable Gas Bottle Compartment	●	●	●
LED Annex light	●	●	●
Slide-out Generator Provision (Honda2.0)	RM23-4	●	●

## Interior General

Additional Internal TV Point	○	●	●
Battery Management System Setec 12 V/240 V	●	●	●
Battery 100 Amp	1	1	2
Battery provision for second battery	RM23-4	●	–
Redarc battery solenoid switching device	●	●	●
Dometic LED Roof Hatch 400x400 (N/A 25-5)*	RM23-4	1	–
Dometic LED Roof Hatch 700x500 (IV25-5 x 2)*	1	1	2
Control Panel	●	–	–
JHUB Tablet Control Panel	–	●	●
LED Strip lights underneath overhead cupboards	●	●	●
Pull-out Pantry to kitchen	RM23-4	●	●
Windows double-glazed push-out with roller blinds	●	●	●
Water filter to sink	○	○	●
Slide-out electric 12 V bed/lounge (excl Conq 25-6)	–	●	●
Water Tank Capacity	80	125	240
Water Tank (Grey) Capacity	75	80	80

## Safety

Child restraints mounting points to rear seats	–	4-berth	4-berth
Rear-View Camera (N/A 20-5)	○	●	●
Roamsafe security door (N/A 20-5)	○	○	●
Solid ADR-approved main door with gas strut	RM23-4	●	●

\*LED N/A Freedom



## JHUB CONTROL PANEL

JHUB gives you total control of your RV. This all-in-one control panel brings together the next generation of RV technology in one central, easy-to-use interface. The control panel gives you easy access to all features of your Conquest & Optimum Motorhome's power, climate and water systems.

### You can:

- See, at a glance, how quickly your battery power is being used and what's using it
- Check current solar charge rates
- Change settings on the water heating and lighting systems
- Check the levels of the fresh and grey water tanks
- Monitor the Motorhome's temperature (N/A Freedom)



# JAYCO FLOORPLANS

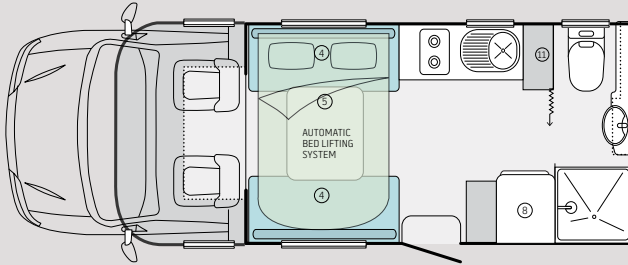
1. Extended lift-up bed
2. Bed
3. Overhead storage

4. Seat
5. Table
6. Club lounge

7. Microwave
8. Fridge
9. Pantry

10. Storage
11. Robe
12. Front boot
13. Washing Machine (Optional)

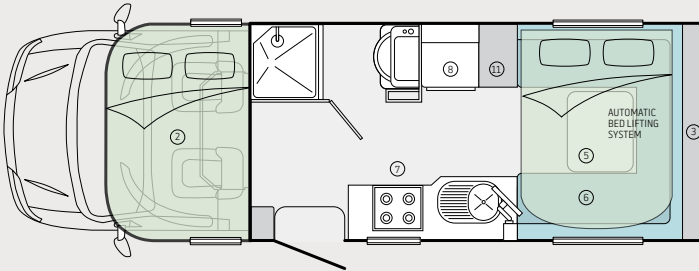
## FREEDOM MOTORHOME



RENAULT MASTER  
RM.20-5

License type	Passenger Vehicle
Luton peak	Low Roof
Seat belts	2
Body (L)	6,500
Width (inc awning)	2,310
Height (inc air con)	3,150
Fresh water (L)	80
Grey water (L)	45
GVM (kg)	3,510 (3,800 Swivel)

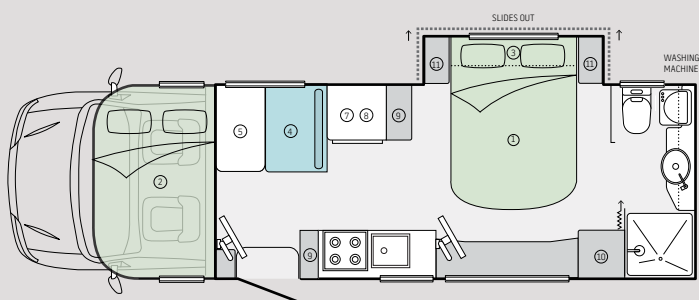
## FREEDOM MOTORHOME



RENAULT MASTER  
RM.23-4

License type	Passenger Vehicle
Luton peak	High Roof
Seat belts	4
Body (L)	7,200
Width (inc awning)	2,390
Height (inc air con)	3,200
Fresh water (L)	80
Grey water (L)	75
GVM (kg)	4,495

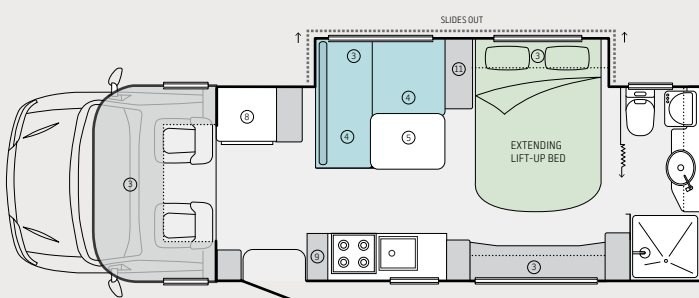
## CONQUEST MOTORHOME



FIAT DUCATO / ALKO  
FA.25-1

License type	Passenger Vehicle
Luton peak	High Roof
Seat belts	4
Body (L)	7,990
Width (inc awning)	2,390
Height (inc air con)	3,250
Fresh water (L)	125
Grey water (L)	125
GVM (kg)	4,495

## CONQUEST MOTORHOME

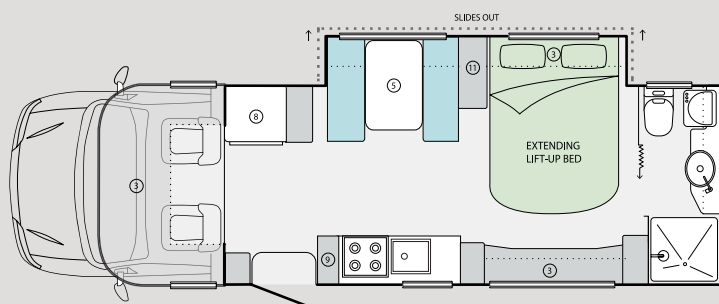


FIAT DUCATO / ALKO  
FA.25-3

License type	Passenger Vehicle
Luton peak	High Roof
Seat belts	2
Body (L)	7,990
Width (inc awning)	2,390
Height (inc air con)	3,250
Fresh water (L)	125
Grey water (L)	125
GVM (kg)	4,495



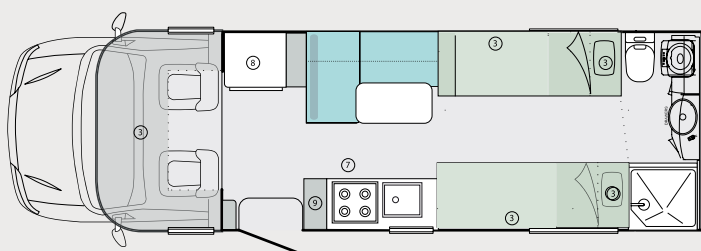
## CONQUEST MOTORHOME



IVECO DAILY  
IV.25-5

License type	Passenger Vehicle
Luton peak	High Roof
Seat belts	2 (opt 4)
Body (L)	7,930
Width (inc awning)	2,390
Height (inc air con)	3,300
Fresh water (L)	100
Grey water (L)	100
GVM (kg)	4,495

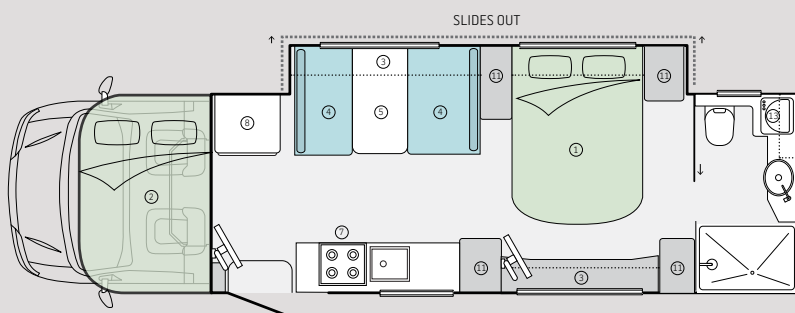
## CONQUEST MOTORHOME



FIAT DUCATO / ALKO  
FA.25-6

License type	Passenger Vehicle
Luton peak	High Roof
Seat belts	2
Body (L)	7,990
Width (inc awning)	2,390
Height (inc air con)	3,250
Fresh water (L)	125
Grey water (L)	125
GVM (kg)	4,495

## OPTIMUM MOTORHOME



IVECO DAILY  
IV.29-5

License type	Light Rigid
Luton peak	High Roof
Seat belts	4
Body (L)	9,000
Width (inc awning)	2,390
Height (inc air con)	3,470
Fresh water (L)	240
Grey water (L)	80
GVM (kg)	7,000



# JAYCO OPTIONS THAT ADD A PERSONAL TOUCH



**Personalise your journey with optional extras that make your motorhome as individual as you are. Here are just a few:**

**01** Carry two full-sized bicycles with lockable, easy-load bike racks (subject to rear overhang regulations).

**02** Add a high-gain Satellite Dish to your 25 ft Conquest, and your favourite free-to-air TV shows can go wherever you go.

**03** An external shower helps keep dirt and sand outside, where it belongs.

**04** A 160 W solar system with regulator gives your motorhome power to spare.

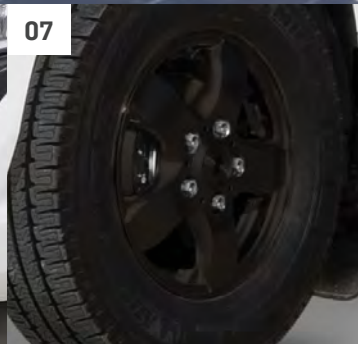
**05** A high-strength bull bar provides maximum front-end protection for your motorhome.

**06** Add extra front-end protection with a strong yet lightweight, low-profile nudge bar.

**07** Optional alloy wheels in silver or black gloss finish (only available on Fiat-based motorhomes).

## DON'T JUST CHOOSE YOUR OWN ADVENTURE...

...choose the individual touches that make your Jayco Motorhome your own, truly personal, home away from home. Each one of our feature-packed floor plans can be complemented with a selection of high-quality optional extras – all of them designed to integrate seamlessly with your Jayco, operate effortlessly, and look fabulous.





# CHOOSE JAYCO AND YOU'LL NEVER LOOK BACK.

ALL JAYCO RVs LET YOU ENJOY THE FEELING OF

*Adventure*

THE FREEDOM TO TRAVEL WHERE YOU WANT, WHEN YOU WANT, FOR HOWEVER LONG YOU WANT.

You're buying one of the best RVs available. A Jayco motorhome turns every trip into a great memory. It comes from the quality you feel in every kilometer you travel with an Australian-made Jayco, and it's why our motorhomes are the first and only choice for so many.

Your Jayco motorhome will hold its value better, for longer. And Jayco will always be there for you – through our comprehensive warranty, complimentary roadside assist service and the convenience of Australia's largest RV dealer network.



**Designed and made  
in Australia**



**2-Year Jayco manufacturer's warranty\*  
5-Year Jayco structural warranty\***



**Over 100 service agents  
nationwide**



**No. 1-selling RV brand  
in Australia**



**Great resale value**



**43-years' experience  
in RV manufacturing**

\*Applicable to Motorhome living component. Terms & conditions available at [jayco.com.au](http://jayco.com.au)



TO BE THE BEST,  
YOU NEED TO WORK WITH THE BEST



200,000+ UNITS BOUGHT, SOLD & SUPPORTED  
BY AUSTRALIA'S LARGEST MANUFACTURER



JAYCO.COM.AU | 1300 JAYCO RV

Jayco Corporation owns the copyright in this brochure. Unauthorised use, reproduction or adaptation is forbidden and will be prosecuted. Due to ongoing improvement, the specifications in this brochure are subject to change without notice. © JAYCO 2018 PO Box 636 Dandenong VIC Australia 3175.

