

User's Manual LED Touch Lights

Please read completely before use.

Remote +
touch version

I · Specifications

Input Power Supply:	5V 2A	Lumens :	120 LM(hex)/240LM(Tri)
Output Power:	5V	Remote Control Range:	5—8 Meters
Light Source:	RGB LED	Size of the Product:	(hex)10.3 x 9 x 3 CM/ (Tri) 15.2 x 13.2 x 3 CM
Power Consumption:	(hex)1.2W/(Tri) 2.4W	Length of USB Cable:	5 Feet/1.5 Meters

II . Cautions

1. Please only use a high-quality Adapter (Output 5V 2A) or the Lights will not work properly.
2. Do not connect more than twenty (12) LED Touch Lights on USB cable.
3. White LED Color consumes the most energy. Do not connect more than twelve (10) Lights when set to White.
4. The center of the Light responds best to the Touch function.
5. Always point the Remote Control toward the Lights, within the Range.

III · Remote Control Functions

Buttons	Functions	Buttons	Functions
ON/OFF	Turns On/Turns Off	Clock	Sets LED Lights on a Timer —Turns Off in 30 Minutes
FLASH	Makes All Colors Glow	Color Selections	Choice of Colors
FADE	Smoothly Shuffles Colors	Arrow Upward	Brightness Up (4-grade)
JUMP	Quickly Changes Colors	Arrow Downward	Brightness Down (4-grade)

IV · Installation Instructions

1. Place all Lights face-down. Insert PCB Boards to connect the Lights. Build a design shape of your choice.
--Keep the side of the USB board with 2 smaller arrows in the same aide of the face of the light.
2. Snap in the Connectors on the holes of the Lights to keep the unit sturdy.
3. Insert the USB Cable into the Adapter. Find the USB Port on the Light closest to the desired wall outlet.
—Connect the other end of the USB Cable to the LED Touch Light. Plug the Adapter into the wall outlet.
4. Remove the insulation to activate the Remote Control. Press ON while pointing at the Lights.
—Make sure every Light works. Try using different PCB Boards if any Lights don't work.
5. Unplug the Adapter, then place the Lights face-down on a flat surface.
—Peel the paper from the Double-Sided Adhesive, and paste one side in the circled back on the Lights.
6. Find a place to display the Lights. After cleaning and drying the area, press the Adhesive Tape to the wall.
—The PCB Boards are strong enough to further support the Lights on a Hook, Nail, or Screw (not included).
7. Plug the Adapter back into the wall outlet. Choose from the Colors or Mode Settings with the Remote Control.
—Touch the Lights to individually change the Colors or Mode Settings to customize your glow.
8. Free USB Ports on the Lights can be used to charge other devices.
—Please, DON'T supply power to any other device while the Lights are in White LED Color mode.
—If ever there are questions about proper electrical usage, consult a licensed technician.

V. How to use the stand:

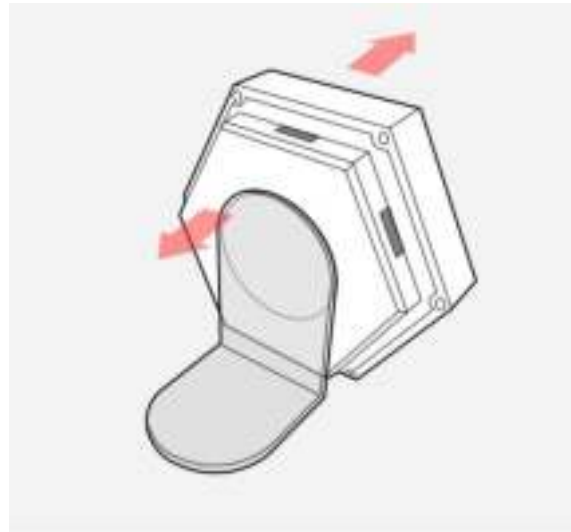
Use the plastic L shape stand to put the hexagon tiles on table.

1. Link the lights with correct USB connecting boards and triangle connectors according to your own design.
2. Connect the USB power cable to check if every light is working well, and then pull out the USB cable.
3. Put a sticker pad on the light you plan to make it the bottom one close to the table.
4. Peel the 2 protection films from the L stand, and make the shorter side of the L stand on table.
5. Put a side of the bottom light on table and hold it straight, push the L stand (shorter side on table) to the sticker on the back of the bottom light and stick them together sturdily.
6. Put another sticker pad on the shorter side of the L stand (facing the table).
7. Clean the place on table where you want to put the lights . And then put the stand with the lights there.

Tips of removing the stand from the table:



Pull or push from side slowly to remove the stand from the table.



Do not push or pull forward or backward, or the stand would be broken!