

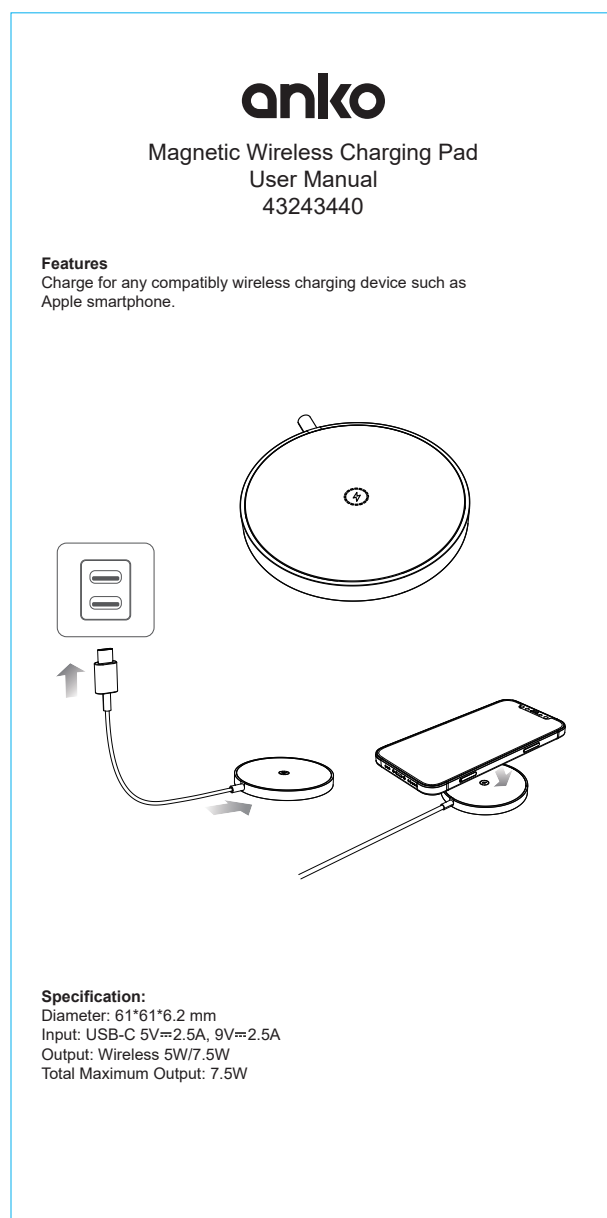
尺寸: 80x160mm  
 材料: 80g书写纸  
 颜色: 双面单色印刷  
 工艺: 不用折  
 备注: 青色裁切线不要印刷出来

正面

80mm

背面

160mm



Notes:

1. Do not disassemble or throw into fire or water, to avoid damage.
2. Do not use wireless charger in severely hot, humid or corrosive environments, to avoid circuit damage and occurs leakage phenomenon.
3. Do not place too close with magnetic stripe or chip card (ID card, credit cards, etc.) to avoid magnetic failure.
4. Please keep the distance at least 30cm between implantable medical devices (pacemakers, implantable cochlear, etc.) and the wireless charger, to avoid potential interference with the medical device.
5. To take care of the children, to ensure that they won't play the wireless charger as a toy

The magnetic wireless charging efficiency may be affected by some phone cases. Try to remove the phone cases or use suitable magnetic phone case if necessary. Make sure there is no metal foreign object between the charging pad and phone case when charging.

12 Month Warranty

Thank you for your purchase from Kmart.

Kmart Australia Ltd warrants your new product to be free from defects in materials and workmanship for the period stated above, from the date of purchase, provided that the product is used in accordance with accompanying recommendations or instructions where provided. This warranty is in addition to your rights under the Australian Consumer Law.

Kmart will provide you with your choice of a refund, repair or exchange (where possible) for this product if it becomes defective within the warranty period. Kmart will bear the reasonable expense of claiming the warranty. This warranty will no longer apply where the defect is a result of alteration, accident, misuse, abuse or neglect.

Please retain your receipt as proof of purchase and contact our Customer Service Centre on 1800 124 125 (Australia) or 0800 945 995 (New Zealand) or alternatively, via Customer Help at Kmart.com.au for any difficulties with your product. Warranty claims and claims for expense incurred in returning this product can be addressed to our Customer Service Centre at 690 Springvale Rd, Mulgrave Vic 3170.

Our goods come with guarantees that cannot be excluded under the Australian Consumer Law. You are entitled to a replacement or refund for a major failure and compensation for any other reasonably foreseeable loss or damage. You are also entitled to have the goods repaired or replaced if the goods fail to be of acceptable quality and the failure does not amount to a major failure.

For New Zealand customers, this warranty is in addition to statutory rights observed under New Zealand legislation.

Trusda 深圳市创世达实业有限公司

公差表				
	A	B	C	D
0-5	±0.07	±0.10	±0.15	±0.20
5-20	±0.10	±0.15	±0.20	±0.30
20-50	±0.15	±0.20	±0.30	±0.40
50-	±0.20	±0.30	±0.40	±0.60

产品编号	MC1	零件名称	说明书	零件料号	
产品名称	移动电源	图 号	MC1-M4262C	版 本	C
材 料		处理工艺		单 位	mm
比 例		客户编号		日 期	2022-11-10
制图:		审批:		批准:	

标记	修改前	修改后	修改日期
①		更正单词	2022-10-10
②		更改参数内容	2022-11-10

1

2

3

4