

BRAUN

Series 9

ブラウン シリーズ 9



91611495/IX-17

取扱説明書

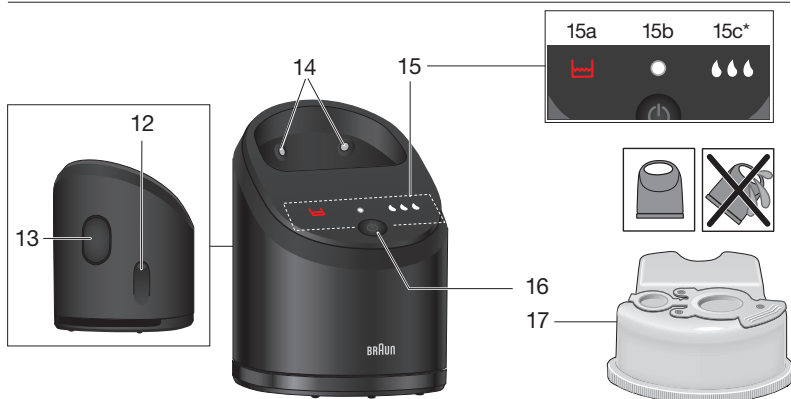
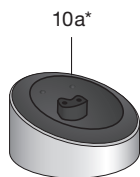
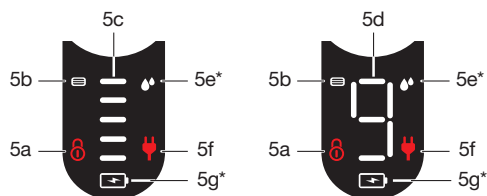
保証書付

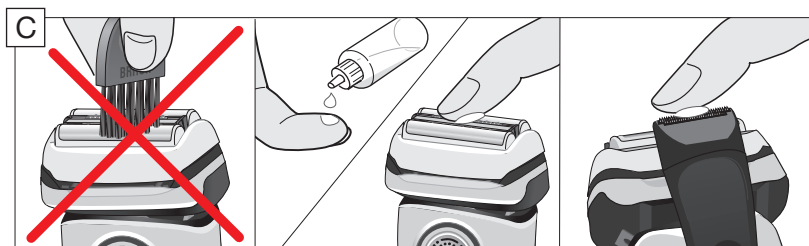
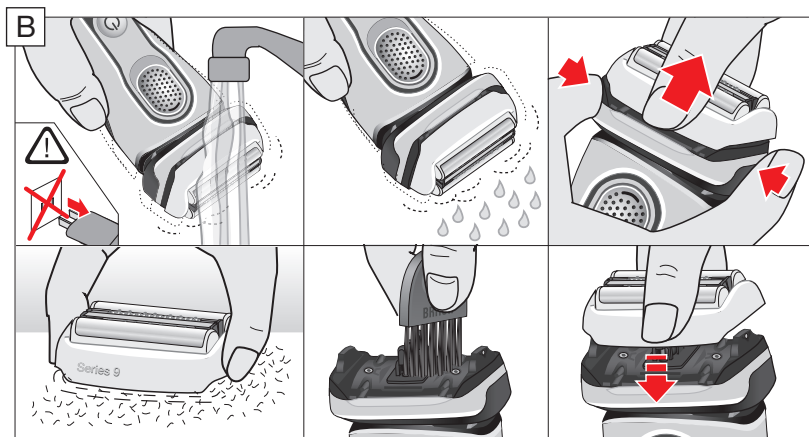
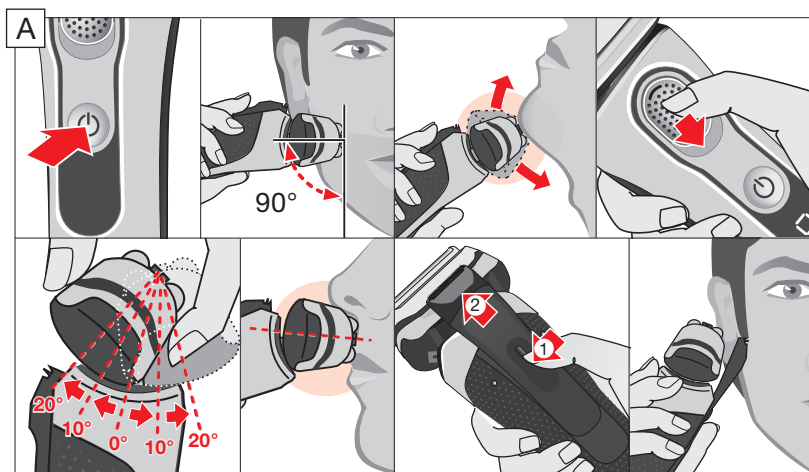
ご使用前に必ずお読みの上、正しくご使用ください。巻末に保証書が添付されておりますので、大切に保管してください。

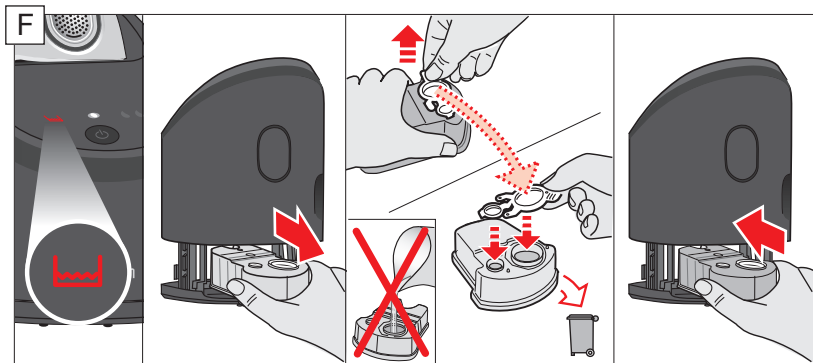
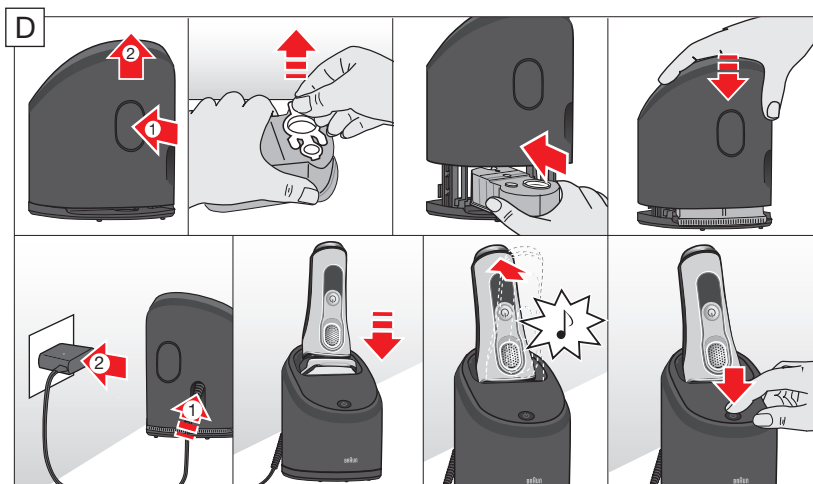
9395cc	9355s
9394cc	9350s
9390cc	9345s
9385cc	9340s
9384cc	9335s
9381cc	9330s
9380cc	9325s
9376cc	9399s
9375cc	
9370cc	
9365cc	
9360cc	

www.braun.com/jp

Type 5793





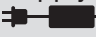


English

Our products are designed to meet the highest standards of quality, functionality and design. We hope you enjoy your new Braun product.

Read these instructions completely, they contain safety information. Keep them for future reference.

Important

Your appliance is provided with a power supply, which has an integrated transformer (Safety Extra Low Voltage). Do not exchange or tamper with any part of it, otherwise there is risk of an electric shock. Only use the power supply provided with your appliance. If the appliance is marked  C 492, you can use it with any Braun power supply 492-XXXX.



This appliance is suitable for cleaning under running water and use in a bathtub or shower. **For safety reasons, it can only be operated cordless.** Detach the shaver from the power supply before using it with water.

Do not use if the appliance, the foil or the power supply are damaged.

This appliance can be used by children aged from 8 years and above and persons with reduced physical, sensory or mental capabilities or lack of experience and knowledge if they have been given supervision or instruction concerning the safe use of the appliance and understand the hazards involved. Children shall not play with the appliance. Cleaning and user maintenance shall not be made by children unless they are older than 8 years and supervised.

Warning

Keep power supply, charging stand* and Clean & Charge Station* dry.

Clean&Charge Station*

To prevent the cleaning fluid from leaking, ensure that the Clean & Charge Station is placed on a flat surface. When a cleaning cartridge is installed, do not tip, move suddenly or transport the station in any way as cleaning fluid might spill out of the cartridge. Do not place the station inside a mirror cabinet, nor place it on a polished or lacquered surface.

The cleaning cartridge contains a highly flammable liquid so keep it away from sources of ignition. Do not expose to direct sunlight and cigarette smoking nor store it over a radiator.

Do not refill the cartridge and use only original Braun refill cartridges.

*not with all models

Shaver

- 1 Foil & Cutter cassette
- 2 Cassette release buttons
- 3 Multi Head Lock switch
- 4 On / off button
- 5 Shaver display**
- 5a Travel lock
- 5b Replacement indicator for Foil & Cutter cassette
- 5c Status segments
- 5d Minutes left display
- 5e Cleaning indicator*
- 5f Plug reminder
- 5g Battery icon*
- 6 Precision trimmer
- 7 Shaver-to-station contacts
- 8 Release button for precision trimmer
- 9 Shaver power socket
- 10 Power supply**
- 10a Charging stand*/**
- 11 Travel case

* not with all models (see display box)

** design can differ

For electric specifications, see printing on the power supply.

Basic operating information

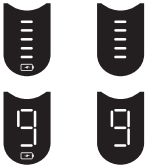
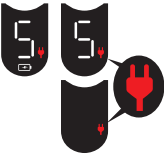



- A full charge takes 1 hour and provides up to 60 minutes of cordless shaving time. This may vary depending on your beard growth and ambient temperature.
- Recommended ambient temperature for charging is 5 °C to 35 °C, for storage and shaving it is 15 °C to 35 °C. The battery may not charge properly or at all under extremely low or high temperatures.
- Do not expose the appliance to temperatures higher than 50 °C for extended periods of time.
- When the shaver is connected to an electrical outlet, it may take some minutes until the display illuminates.

Charging

- Connect the shaver to an electrical outlet by snapping the power supply (10) into the power socket of the shaver (9) / the charging stand (10a). For cc models plug into the station power socket (see chapter «Clean & Charge Station»).
- For first-time charge, charge continuously for at least 1 hour.
- The actual charge status is shown on the display.

Display

- The display information is dependent on the model.
- Some models only show icons during charging or operation. On other models a series of icons is also shown after the shaver has been turned off.
- The table below shows the icons that can appear on the shaver display.

Battery status	
	<p>The battery status is shown with segments and additionally in digits (for some models also with a battery icon).</p> <ul style="list-style-type: none"> • The status segments appear / disappear gradually with the status of the battery power. • The digital number shows the remaining shaving time in minutes.
Plug reminder (low charge / cordless operation only)	
	<ol style="list-style-type: none"> 1. <u>Flashing</u>: Battery is in low charge, i.e. 5 minutes shaving time are left. 2. <u>Fast flashing</u>: This appliance can only be operated cordless. Disconnect the shaver from the power supply before turning it on.
Travel lock	
	<p>When the travel lock icon appears on the display, the shaver is locked.</p>
Replacement indicator for Foil & Cutter cassette	
	<p>The replacement indicator shows the usage of the Foil & Cutter cassette. The status segments disappear gradually with the numbers of shaves*.</p>
Cleaning indicator (with Clean & Charge station usage only)	
	<p>The cleaning indicator lights up after each shave as a reminder that the shaver should be cleaned in the Clean & Charge Station.</p>

*not with all models

Usage

Make sure that the shaver is disconnected from the power supply. Press the on / off button (4) to operate the shaver.

Tips for a perfect shave

1. Position the shaver at the right angle (90°) to your skin.
2. Stretch your skin slightly with your hand.
3. Shave against the direction of your beard growth.

Multi Head Lock switch (head lock)

The shaver head can be locked in five positions to shave hard-to-reach areas (e.g. under the nose).

- Slide the Multi Head Lock switch (3) down to lock the shaver head.
- Move the shaver head manually to your desired position.
- For automatic cleaning in the Clean & Charge Station the head lock needs to be released.

Precision trimmer

The trimmer can be used to trim sideburns, moustache or beard.

- Press the release button (8) and slide the trimmer (6) upwards.

Travel lock

The shaver can be locked to avoid unintended starting of the motor (e.g. for storing in a suitcase).

- Press the on / off button (4) for 5 seconds to lock / unlock the shaver. This is confirmed by a beep sound and the lock icon appearing / disappearing on the display.

Foil replacement

To maintain 100% shaving performance, replace the Foil & Cutter cassette (1), when the foil replacement indicator lights up (and no status segments are visible).

- To remove the Foil & Cutter cassette press the release buttons (2).
- Press the on / off button for 10 seconds to reset the counter.
- Afterwards you need to unlock the shaver (see chapter «Travel lock»).
- On some shaver models the replacement indicator will reset automatically after 7 shaves.

Cleaning

Cleaning under running water

Especially important after foam or gel usage

- **Switch on the shaver cordless and rinse the shaver head under hot running water until all residues have been removed.** You may use liquid soap without abrasive substances. Rinse off all foam and let the shaver run for a few more seconds.
- Next, switch off the shaver, press the release buttons (2) to remove the Foil & Cutter cassette (1) and let it dry.
- If you regularly clean the shaver under water, apply a drop of light machine oil on top of the Foil & Cutter cassette once a week.

The shaver needs to be cleaned under running water after each foam or gel usage!

Cleaning with a brush

- Switch off the shaver. Remove the Foil & Cutter cassette (1) and tap it out on a flat surface. Using the brush, clean the inner area of the pivoting head. Do not clean the cassette with the brush as this may damage it!

Clean & Charge Station (C & C)*

The Clean & Charge Station has been developed for cleaning, charging, lubricating, disinfecting, drying and storing your Braun shaver.

- 12 Station power socket
- 13 Lift button for cartridge exchange
- 14 Station-to-shaver contacts
- 15 Clean & Charge Station display
- 15a Level indicator
- 15b Status light
- 15c Cleaning program indicators*
- 16 Start button
- 17 Cleaning cartridge

* not with all models (see display box)

C & C Installation

- Remove the protection foil from the C & C display.
- Press the lift button (13) at the rear side of the C & C to lift the housing.
- Hold the cleaning cartridge (17) down on a flat, stable surface (e.g. table).
- Carefully remove the lid from the cartridge.
- Slide the cartridge from the rear side into the base of the station until it snaps in.
- Slowly close the housing by pushing it down until it locks.
- Using the power supply (10), connect the station power socket (12) to an electrical outlet.

C & C Usage

Important: The shaver needs to be dry and free from any foam, gel or soap residue!

- Insert the shaver in the C & C upside down, with the front showing and head lock (3) released.
- The contacts (7) on the back of the shaver need to align with the contacts (14) in the C & C. Push the shaver backwards in the correct position. A beep sound confirms that the shaver sits properly in the C & C.
- Only C & C with cleaning program selection: The C & C analyses the hygiene status. The status is shown by the cleaning program indicators (15c) in the C & C display (15).

Charging the shaver in the C & C

Charging will start automatically when the shaver has been inserted properly.

Cleaning the shaver in the C & C

When the cleaning indicator lights up on the shaver display, insert the shaver into the C & C, as described above.

Cleaning programs (not with all models)

- 💧 short / economical cleaning
- 💧💧 normal level of cleaning
- 💧💧💧 intensive cleaning

Each cleaning program consists of several cycles, where cleaning fluid is flushed through the shaver head.

Automatic cleaning

Start the cleaning process by pressing the start button (16). If status light (15b) does not shine (C & C switches to stand-by after ca. 10 minutes), press start button twice. Otherwise, cleaning will not start.

Depending on your model and/or program selected, the cleaning time takes up to 3 minutes and afterwards a fan runs. During this time the status light (15b) blinks.

After cleaning, drying and charging is completed, all indicators turn off.

Removing the shaver from the C & C

Hold the C & C with one hand and tilt the shaver slightly to the front to release it.

Cleaning cartridge / replacement

When the level indicator (15a) lights up permanently red, the remaining fluid in the cartridge is sufficient for about 3 more cycles. When the level indicator blinks red, the cartridge needs to be replaced – about every 4 weeks when used daily.

After having pressed the lift button (13) to open the housing, wait for a few seconds before removing the used cartridge to avoid any dripping. Before discarding the used cartridge, make sure to close the openings using the lid of the new cartridge, since the used cartridge will contain contaminated cleaning solution.

The hygienic cleaning cartridge contains ethanol or isopropanol (specification see cartridge), which once opened will naturally evaporate slowly. Therefore, each cartridge, if not used daily, should be replaced after approximately 8 weeks. The cleaning cartridge also contains lubricants for the shaving system, which may leave residual marks on the outer foil frame and the cleaning chamber of the C & C. These marks can be removed easily by wiping gently with a damp cloth and do not impact the shaver and its performance in any way.

Accessories

Braun recommends changing your shaver's Foil & Cutter cassette every 18 months to maintain your shaver's maximum performance.

Available at your dealer or Braun Service Centres:

- Foil & Cutter cassette: 92S/92M
- Cleaning Cartridge: CCR
- Braun Shaver cleaner spray

Environmental notice

Product contains batteries and/or recyclable electric waste. For environment protection, do not dispose of in household waste, but for recycling take to electric waste collection points provided in your country.



The cleaning cartridge can be disposed of with regular household waste.

Subject to change without notice.

Trouble-Shooting

Problem:	Possible reason:	Remedy:
Shaver		
Shaver does not start when pressing the on / off button.	<ol style="list-style-type: none"> 1. The shaver can only be operated cordless. 2. Travel lock is activated. 	<ol style="list-style-type: none"> 1. Unplug the shaver 2. Press the on / off button for 5 seconds to unlock the shaver.
Charging does not start when connected to power socket or put in the Clean & Charge Station.	<ol style="list-style-type: none"> 1. Sometimes charging starts delayed (e.g. after long storage). 2. Ambient temperature is out of valid range. 3. Power supply is not plugged into the shaver properly. 4. Shaver is not placed properly in the Clean & Charge Station. 	<ol style="list-style-type: none"> 1. Wait a few minutes. Charging will start automatically. 2. Recommended ambient temperature for charging is 5 °C to 35 °C. 3. Power supply needs to snap in. 4. Contacts of the shaver need to align with contacts in the Clean & Charge Station.
Shaver does not charge completely and keeps blinking.	Ambient temperature is out of valid range.	Recommended ambient temperature for charging is 5 °C to 35 °C.
Unpleasant smell from the shaver head.	<ol style="list-style-type: none"> 1. Shaver head is cleaned with water. 2. Cleaning cartridge is in use for more than 8 weeks. 	<ol style="list-style-type: none"> 1. When cleaning the shaver head with water only use hot water and from time to time some liquid soap (without abrasive substances). Remove Foil & Cutter cassette to let it dry. 2. Change cleaning cartridge at least every 8 weeks.
Battery performance dropped significantly.	<ol style="list-style-type: none"> 1. Foil and cutter are worn which requires more power for each shave. 2. Shaver head is regularly cleaned with water but not lubricated. 	<ol style="list-style-type: none"> 1. Renew Foil & Cutter cassette. 2. If the shaver is regularly cleaned with water, apply a drop of light machine oil on top of the foil once a week for lubrication.
Shaving performance dropped significantly.	<ol style="list-style-type: none"> 1. Foil and cutter are worn. 2. Shaving system is clogged. 	<ol style="list-style-type: none"> 1. Renew Foil & Cutter cassette. 2. Soak the Foil & Cutter cassette into hot water with a drop of dish liquid. Afterwards rinse it properly and tap it out. Once dry apply a drop of light machine oil on the foil.
Shaver head is damp.	<ol style="list-style-type: none"> 1. Drying time after automatic cleaning was too short. 2. Drain of the Clean & Charge station is clogged. 	<ol style="list-style-type: none"> 1. Wait until the drying process has been completed. 2. Clean the drain with a wooden toothpick.

Clean & Charge Station

Cleaning does not start when pressing the start button.	<ol style="list-style-type: none"> 1. Shaver is not placed properly in the Clean & Charge Station. 2. Cleaning cartridge does not contain sufficient cleaning fluid (display blinks red). 3. Appliance is in stand-by mode. 	<ol style="list-style-type: none"> 1. Insert shaver into the Clean & Charge Station and push it to the rear side of the station (contacts of the shaver need to align with contacts in the station). 2. Insert new cleaning cartridge. Press the start button again. 3. Press the start button again.
Increased consumption of cleaning fluid.	Drain of the Clean & Charge station is clogged.	<ul style="list-style-type: none"> – Clean the drain with a wooden toothpick. – Regularly wipe the tub clean.

無料修理規定

- 1.取扱説明書、本体添付ラベル等の注意書に従った使用状態で保証期間内に故障した場合には、無料にて修理をさせていただきます。
- 2.保証期間内に無料修理をお受けになる場合には、製品と保証書をご持参、ご提示のうえ、お買い上げ販売店またはブラウンリペアセンターにお申し付けください。
- 3.ご転居の場合は、事前にお買い上げの販売店、またはブラウンリペアセンターにご相談ください。
- 4.ご贈答などで、本保証書に記入してあるお買い上げ販売店に修理がご依頼できない場合には、ブラウンリペアセンターにご相談ください。
- 5.保証期間内でも次の場合は有料修理になります。
 - 使用上の誤り及び不当な修理や改造による故障ならびに損傷。
 - お買い上げ後の移動、輸送、落下等による故障ならびに損傷。
 - 火災、地震、水害、落雷、その他の天災地変、異常電圧、指定外の使用電源（電圧や周波数）等による故障ならびに損傷。
 - 一般家庭以外（業務用等での長時間利用等）に使用された場合の故障ならびに損傷。
 - 保証書の提示がない場合。
 - 保証書にお買い上げの年月日、お客様名、販売店名の記入または販売店から発行される同等の証明書のない場合、あるいは字句を書き換えられた場合。
 - 消耗品の磨耗や損傷。
 - 当社が認可していない店舗等で修理を行った場合。
- 6.保証書は再発行いたしませんので紛失しないよう大切に保管してください。

修理メモ

- ※ この保証書は、保証書に明示した期間、条件のもとにおいて無料修理をお約束するものです。従ってこの保証書によって、保証を発行している者（保証責任者）、およびそれ以外の事業者に対するお客様の法律上の権利を制限するものではありません。保証期間経過後の修理について不明の場合は、お買い上げの販売店またはブラウンリペアセンターにお問い合わせください。
- ※ 保証期間経過後の修理・補修用性能部品の保有期間について詳しくは「保証とアフターサービス」の頁をご覧ください。

ブラウン シリーズ9 保証書

持込修理

本書は、無料修理規定の内容で無料修理を行うことをお約束するものです。お買い上げの日から下記期間中に故障が発生した場合は本書をご提示のうえ、お買い上げの販売店に修理をご依頼ください。お客様にご記入いただいた保証書の記載内容は、保証期間内のサービス活動及びその後の安全点検活動のために利用させていただきます場合がございますので、ご了承ください。

品 名	電気カミソリ		
型 番	9395cc/9394cc/9390cc/9385cc/9384cc/9381cc/9380cc/9376cc/9375cc/9370cc 9365cc/9360cc/9355s/9350s/9345s/9340s/9335s/9330s/9325s/9399s		
保 証 内 容	対 象 部 分	期 間 (お買い上げの日より)	
	シェーバー本体 電源コード (但し、網刃・内刃カセット刃及び付属品は除く) アルコール洗浄システム アルコール洗浄システム付きモデルのみ (但し専用洗浄液カートリッジは除く)	1 年	
お買い上げ日	年 月 日		
お客様 お名前・ご住所			
販売店・住所			

(販売店及びお買い上げ日の記入なきものは無効です)

プロクター・アンド・ギャンブル・ジャパン株式会社

BRAUN

9395cc/9394cc/9390cc
9385cc/9384cc/9380cc/9381cc
9376cc/9375cc/9370cc/9385cc
9360cc/9355s/9350s/9345s/9340s
9335s/9330s/9325s/9399s

Japan/UK