



BIG BEAR POWER

GX COMMERCIAL LLC

4301 S VALLEY VIEW BLVD. STE 10 AND 11

LAS VEGAS, NV 89103

725-274-6171

BBC62 ASSEMBLY MANUAL



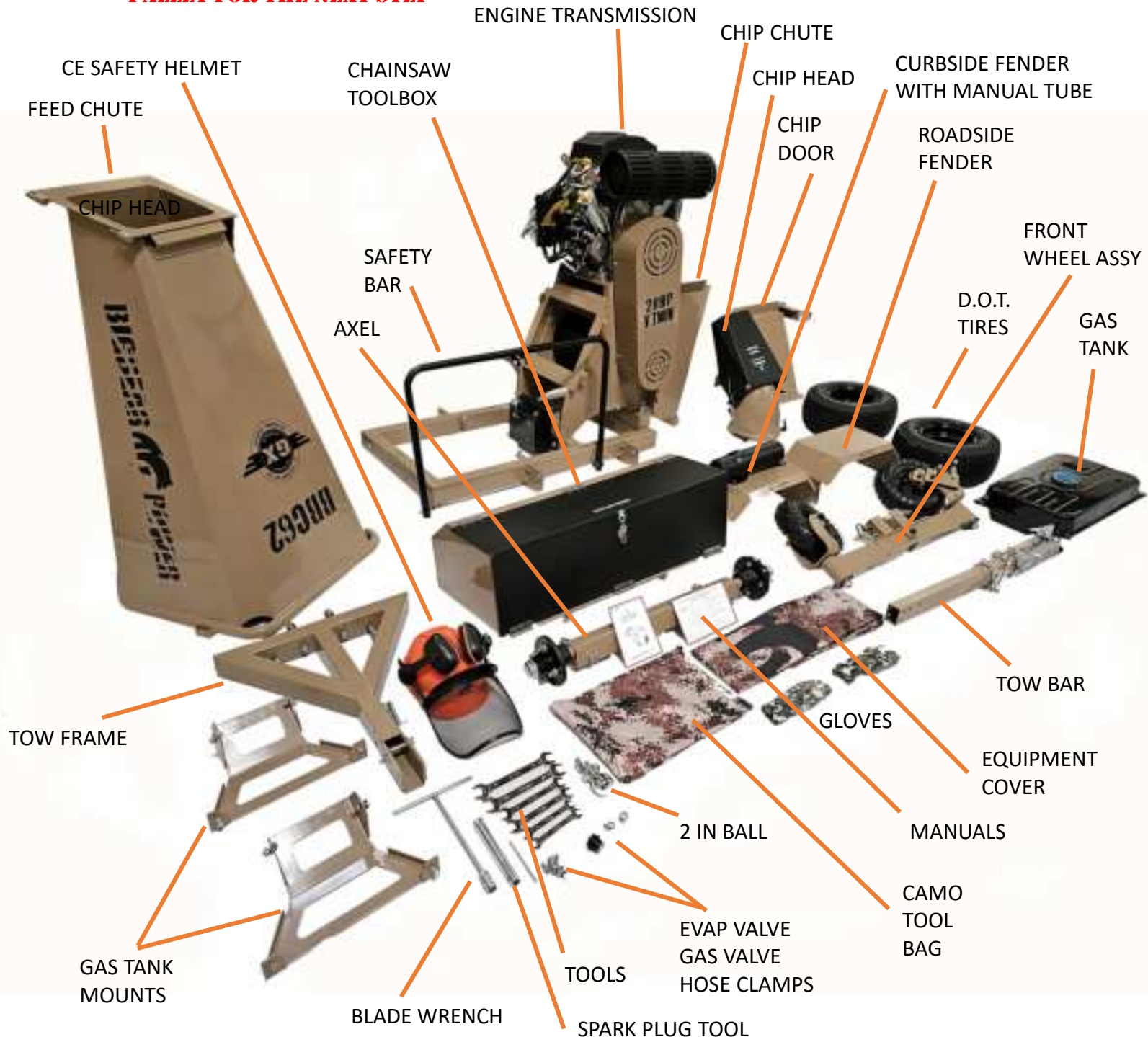
REVISED 06-23-2024

STEP 1

PART INSPECTION

1. REMOVE THE TOP AND SIDES AND PARTS FROM THE CRATE
2. UNPACK ALL PARTS AND CHECK THAT YOU HAVE EVERYTHING.
3. **LEAVE THE HEAVY ENGINE TRANSMISSION ON THE PALLET**
3. MISSING PARTS? CALL 725-274-6171 GX COMMERCIAL PARTS DEPT

LEAVE THE HEAVY ENGINE TRANSMISSION ON THE PALLET FOR THE NEXT STEP



STEP 2

PRE-DEPLOYMENT

- 1. LEAVE THE ENGINE TRANSMISSION ON THE PALLET**
- 2. WE RECOMMEND YOU ENLIST A HELPER TO ASSEMBLE THIS MACHINE**



MISSING PARTS? CALL 725-274-6171 GX COMMERCIAL PARTS DEPT

STEP 3

INSTALL FEED CHUTE

1. **PLACE FEED CHUTE TO SIDE OF MACHINE AS SHOWN AND LIFT**
2. **ALIGN PINS INTO HINGES – 2 PERSONS ARE RECOMMENDED FOR THIS STEP AS THIS FEED CHUTE IS HEAVY AND THEY CAN HELP ALIGN THE HINGES**
3. **CLOSE THE FEED CHUTE AND LATCH**
4. **HOLDING THE CHUTE ROTATE THE ASSEMBLY 90 DEGREES EXTENDED OFF THE PALLET AS SHOWN**

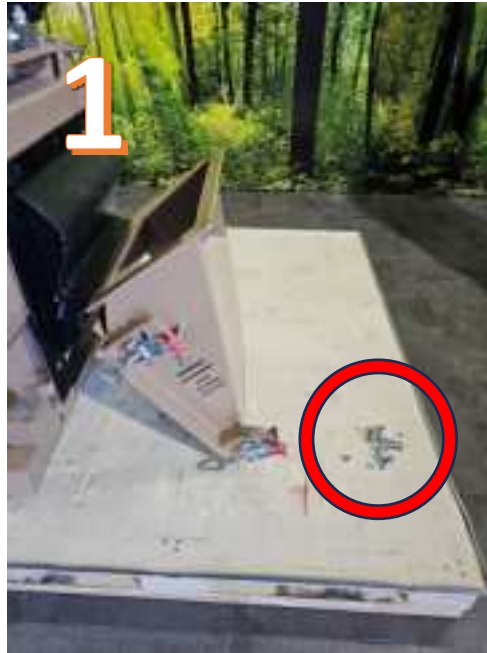


MISSING PARTS? CALL 725-274-6171 GX COMMERCIAL PARTS DEPT

STEP 3

INSTALL CHIP DOOR

- 1. IMPORTANT REMOVE NUTS AND BOLTS FROM DOOR BEFORE MOUNTING. THIS PREVENTS HARDWARE BEING DROPPED INTO THE CUTTING DRUM DURING STEP 4. REMOVE NUTS AND BOLTS AND LAY ASIDE.**
- 2. INSTALL THE CHIP DOOR ONTO THE HINGES**
- 3. CLOSE AND LATCH**



MISSING PARTS? CALL 725-274-6171 GX COMMERCIAL PARTS DEPT

STEP 4

INSTALL HIGH VELOCITY DEPLOYMENT CHIP CHUTE

- 1. IMPORTANT – DO NOT DROP HARDWARE INTO CHUTE DURING THIS STEP**
- 2. PLACE CHIP CHUTE ONTO CHIP DOOR THEN LOOSELY ASSEMBLE HARDWARE**
- 3. SQUARE UP CHUTE ON THE DOOR AND SECURELY TIGHTEN ALL HARDWARE**

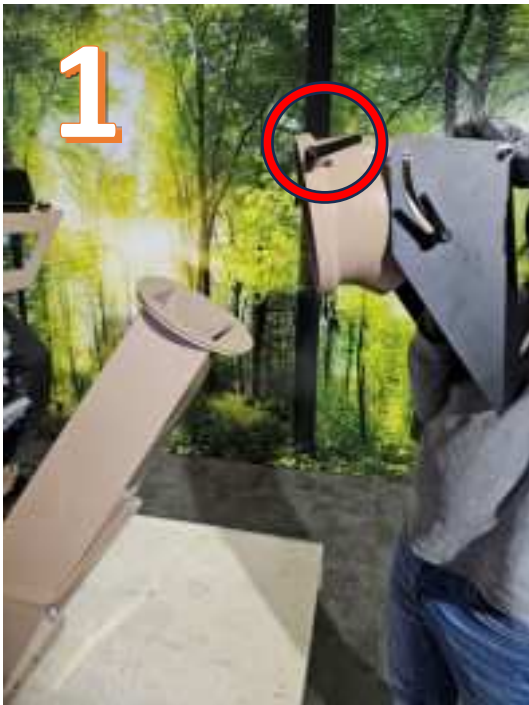


MISSING PARTS? CALL 725-274-6171 GX COMMERCIAL PARTS DEPT

STEP 5

CHIP HEAD ASSEMBLY

- 1. LOOSEN 3 TOOLESS CLAMPS**
- 2. MOUNT CHIP HEAD ONTO THE DEPLOYMENT CHUTE AND TIGHTEN CLAMPS**
- 3. TIGHTEN CHIP SHIELD ADJUSTING CLAMPS**



MISSING PARTS? CALL 725-274-6171 GX COMMERCIAL PARTS DEPT

STEP 6

INSTALL AXEL – 2 PERSONS RECOMMENDED FOR THIS STEP AS THE MACHINE NEEDS TO BE BALANCED FORWARD HELD SECURELY DURING AXLE INSTALLATION

- 1. TIP THE MACHINE FORWARD NOT TO FAR – PROTECT THE LATCH FROM BEING BENT ON THE PALLET FLOOR.**
- 2. POSITION AXEL WITH MOUNTING HOLES IN POSITION SHOWN**
- 3. LOOSELY INSTALL BOLTS TO ONE SIDE – NUT ON THE BOTTOM**
- 4. INSTALL OTHER SIDE**
- 5. TIGHTEN ALL BOLTS AND SEAT NUTS ONTO LOCK WASHERS SECURELY**



WARNING
PROTECT LATCH FROM BEING BENT ON THE PALLET FLOOR.



MISSING PARTS? CALL 725-274-6171 GX COMMERCIAL PARTS DEPT

STEP 7

MOUNTING THE WHEELS

- 1. REMOVE THE WHEEL NUTS FROM THE AXLE SPINDLES**
- 2. INSTALL THE WHEEL WITH THE NUT TAPER TOWARD THE RIM**
- 3. TIGHTEN THE RIM NUTS**
- 4. REPEAT FOR THE OTHER WHEEL**
- 5. LOWER WHEELS TO THE GROUND AND TIP THE UNIT BACK**
- 6. REMOVE THE PALLET FROM THE WORK AREA**



MISSING PARTS? CALL 725-274-6171 GX COMMERCIAL PARTS DEPT

STEP 8

INSTALL TOW FRAME – 2 PERSONS RECOMMENDED

1. **ASSEMBLY HELPER SECURELY KEEPS UNIT TIPPED BACK**
2. **OPEN CHIP CHUTE TO PROVIDE FRONT WORKING SPACE. **BE CAUTIOUS OF DRUM BLADES AT ALL TIMES.****
3. **READY THE TOW FRAME NOTE BOLT DIRECTION AND OPEN CHANNEL UP**
4. **BOLT THE TOW FRAME IN PLACE – **BE CAUTIOUS OF DRUM BLADES AT ALL TIMES****



MISSING PARTS? CALL 725-274-6171 GX COMMERCIAL PARTS DEPT

STEP 9

INSTALL THE FLIP AND STOW TOW BAR

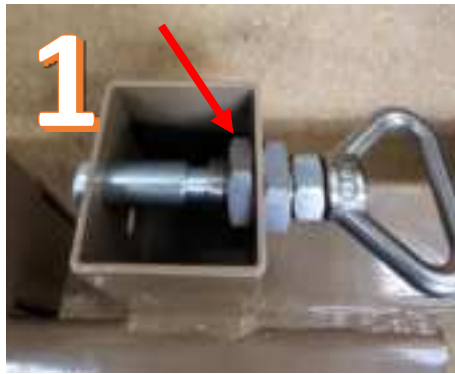
- 1. PULL THE TOW BAR PIN AND REAR BOLT FROM THE TOW FRAME CHANNEL**
- 2. INSTALL THE TOW BAR – REINSTALL THE BOLT AND PIN LOCK**
- 3. TIGHTEN THE LOCK NUT**
- 4. CLOSE AND LATCH THE CHIP CHUTE**



MISSING PARTS? CALL 725-274-6171 GX COMMERCIAL PARTS DEPT

STEP 10 INSTALL FRONT AXLE WHEELS 2 PERSONS REQUIRED

- 1. ENSURE NUTS ARE TIGHTENED ON SPRING PULLS**
- 2. CHECK BOTH PINS FOR SMOOTH OPERATION**
- 3. PREPARE THE AXLE ASSEMBLY**
- 4. LIFT AXLE INTO PLACE AS SHOWN**
- 5. ALIGN PULL PINS WITH HOLES IN FRAME AND LOCK IN PLACE**
- 6. INSTALL LONG BOLT INTO REAR HOLE AS SHOWN AND TIGHTEN**
- 7. PULL PINS AND DROP WHEELS INTO DOWN LOCKED POSITION**



STEP 11

INSTALL FENDERS

1. **INSTALL CURB SIDE FENDER – NOTE THE MANUAL HOLDER IS PRE-INSTALLED. **DO NOT INSTALL THIS FENDER ON THE ROADSIDE.** THE FEED CHUTE WILL INTERFERE WITH THE MANUAL HOLDER WHEN UNLATCHED AND OPENED.**
2. **INSTALL 2 BOLTS IN THE REAR**
3. **INSTALL 2 BOLTS IN THE FRONT**
4. **REPEAT FOR THE ROADSIDE FENDER**



MISSING PARTS? CALL 725-274-6171 GX COMMERCIAL PARTS DEPT

STEP 12

INSTALL ELECTRICAL CONNECTIONS

1. DURING THIS PROCEDURE REMOVE THE KEY FROM KEY START AND CLOSE AND LOCK ALL CHUTES. DISCONNECT THE SPARKPLUG WIRE.
2. LOCATE THE MAIN WIRES FROM THE ENGINE AND POSITION AS SHOWN
3. CONNECT THE SAFETY BAR SHUT OFF UNTIL THE PLUGS LOCK TOGETHER
4. CONNECT RED POSITIVE + AND GREEN GROUND
5. TIGHTEN THE RED TERMINAL **DO NOT** ALLOW THE WRENCH TO TOUCH METAL TO GROUND
6. TIGHTEN THE GROUND GREEN WIRE
7. THE HOUR METER RUNS OFF THE SPARK PLUG WIRE. ONLY ONE WIRE CONNECTION IS REQUIRED, THE OTHER WIRE HAS NO CONNECTION.
8. CONNECT THE SPARKPLUG WIRE AND REINSERT YOUR ENGINE KEY



STEP 13

INSTALL CHAINSAW TOOLBOX

1. **REMOVE ALL MOUNTING HARDWARE FROM TOOLBOX AND POSITION AS SHOWN**
2. **INSTALL 1 SIDE LOOSELY**
3. **INSTALL 2ND SIDE LOOSELY**
4. **INSTALL 2 BOLTS IN REAR OF TOOLBOX TO THE FRAME**
5. **TIGHTEN ALL BOLTS SECURELY**



STEP 14

PREPARE THE GAS TANK FOR MOUNTING

1. **READY PARTS – EVAP VALVE, GAS VALVE, HOSE CLAMPS**
2. **INSTALL EVAP VALVE – ORIENT HOSE TUBE AS SHOWN – PRESS VALVE INTO PLACE ON THE TANK**
3. **INSTALL GAS VALVE AND ORIENT GAS CONNECTION TUBE AS SHOWN BEFORE TIGHTENING**



STEP 15

INSTALL TANK MOUNTS TO THE ENGINE

- 1. INSTALL THE RIGHT-HAND AND LEFT-HAND GAS TANK BRACKETS TO THE ENGINE AS SHOWN**



STEP 16A

ROUTE THE EVAP HOSE

- IF YOUR EVAP HOSE NEEDS TO BE ROUTED HERES HOW TO DO IT
- SOME UNITS ARE ALREADY PRE-ROUTED IN PRODUCTION.

1. REMOVE THE FRONT TOP ENGINE PANEL
2. FIND THE EVAP HOSE AND ROUTE IT TO THE MUFFLER SIDE OF ENGINE
3. EXIT THE HOSE AS SHOWN
4. AFTER THE TANK IS INSTALLED, THE HOSE WILL CONNECT TO THE VALVE.

1

FRONT
COVER



2



3

EVAP WITH
WHITE
CONNECTOR



4

USE
EXTENSION
HOSE
PROVIDED

16B

INSTALL TANK TO THE ENGINE

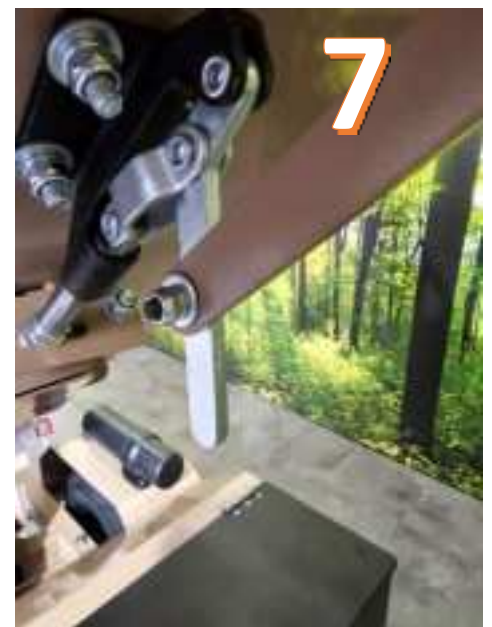
1. **INSTALL TANK EVAP VALVE TOWARD THE **CHIP CHUTE** SIDE**
2. **CONNECT ALL 4 MOUNTING CORNERS AND TIGHTEN ALL BOLTS**
3. **ATTACH THE EVAP HOSE TO THE VALVE ON TOP OF THE TANK**
4. **INSTALL GAS LINE AND HOSE CLAMPS**
5. **TIGHTEN ALL TANK BRACKETS TO THE ENGINE TO SECURE THE TANK**



STEP 17

INSTALL SHUT OFF BAR

1. HANG BAR AS SHOWN
2. ATTACH BROWN BAR TO ROADSIDE OF SILVER BAR
3. TIGHTEN BOLT TO ALLOW MOVEMENT
4. SWING UP BAR ATTACH TO LT SIDE – NYLON WASHERS AGAINST BAR
5. ATTACH BAR TO RT SIDE – KEEP NYLON WASHERS AGAINST BAR
6. TIGHTEN BOTH SIDES SNUG BUT ALLOW MOVEMENT OF BAR
7. TEST THE BAR, PRESSING DOWN BAR SHOULD LOCK IN PLACE AND SILVER TRIP BAR WILL POINT DOWNWARD AFTER BAR INSTALLATION



FINISH LINE

CONGRATULATIONS ON A GREAT JOB ASSEMBLING !

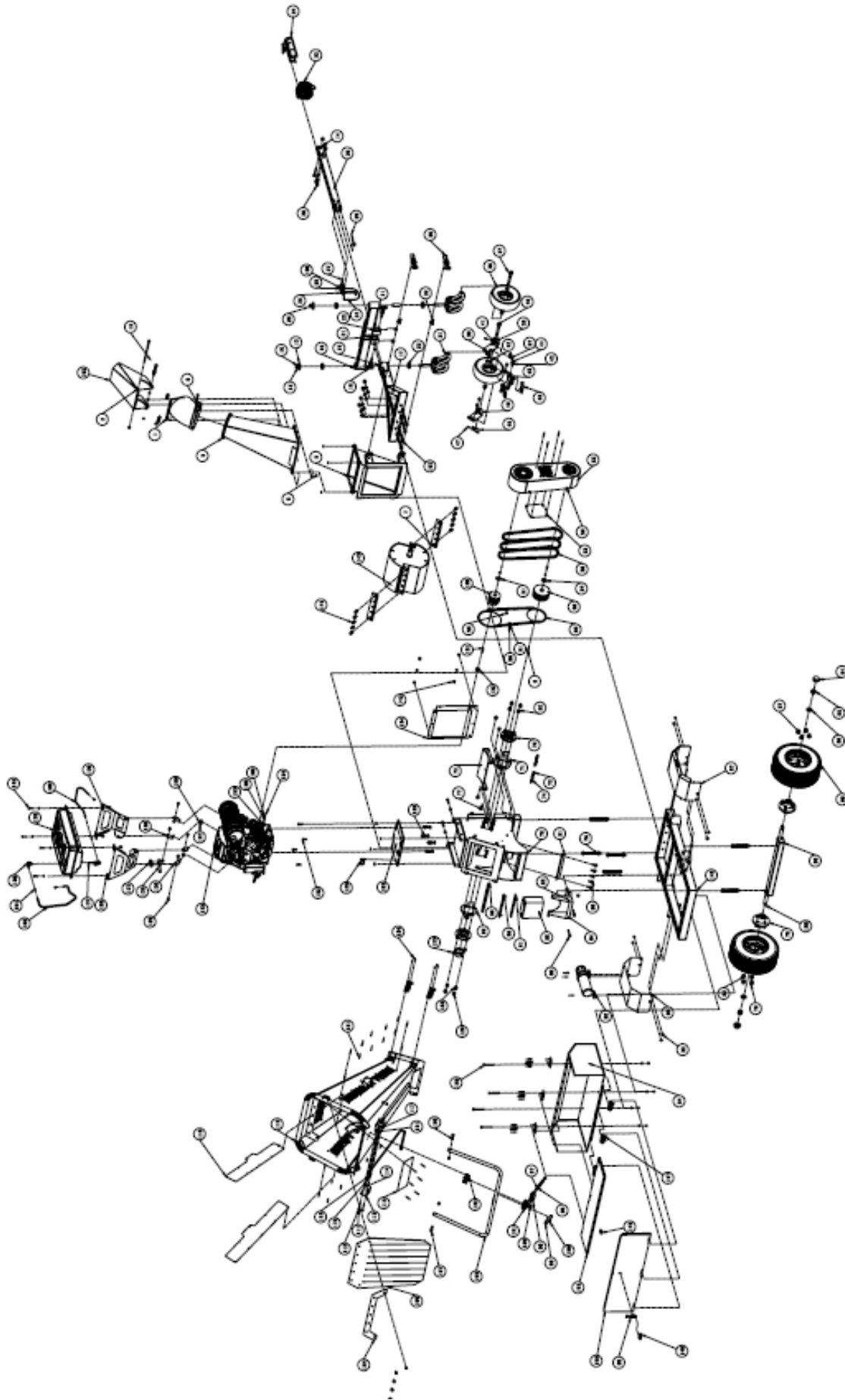
- 1. CHECK YOUR BOLTS ON YOUR CHIPPER BEFORE EACH USE**
- 2. CHECK YOUR OSHA COMPLIANT SAFETY SHUT OFF BAR BEFORE EACH OPERATION**
- 3. USE 10W-30 1.6L FOR YOUR ENGINE OIL API SERVICE LEVEL SJ**
- 4. CHECK YOUR OIL LEVEL ON LEVEL GROUND, REINSERT THE DIP STICK WITHOUT SCREWING IT IN TO CHECK THE OIL LEVEL. CHANGE YOUR OIL AFTER FIRST 20 HOURS. THEN EVERY 250 HOURS THEREAFTER.**
- 5. USE ONLY BIGBEAR OEM PARTS. ONLY BIGBEAR HIGH PERFORMANCE TORNADIC BLADES FIT BIGBEAR CHIPPERS. CALL 725-274-6171 FOR PARTS IN LAS VEGAS, NV.**
- 6. USE HIGH GRADE GASOLINE IN THIS TWIN CYLINDER ENGINE**
- 7. REPLACE YOUR BLADES AND DRIVE BELTS ONCE PER YEAR**
- 8. ALL DRUM BEARINGS AND WHEEL BEARINGS ARE PREPACKED AT FACTORY, GREASE ONCE PER YEAR WITH AXEL AND BEARING GREASE.**
- 9. FOLLOW YOUR MAINTENANCE SCHEDULE IN THE ENGINE MANUAL AND KEEP RECORDS**
- 10. THE INTENDED USE OF THIS CHIPPER IS TO CHIP TREES ONLY.**
- 11. TOW YOUR MACHINE AT 45MPH MAX AND SLOW TO 20MPH FOR TURNING**
- 12. FOLLOW ALL THE SAFETY RULES RECOMMENDED BY OSHA AND THE SAFETY WARNINGS ON THIS EQUIPMENT.**
- 13. DO NOT MODIFY THIS EQUIPMENT IN ANY WAY**
- 14. KEEP THOSE AROUND YOU A SAFE DISTANCE WHEN RUNNING THIS MACHINE**
- 15. DO NOT OPERATE THIS CHIPPER UNDER THE INFLUENCE OF MEDS DRUGS OR ALCOHOL**
- 16. WEAR PROTECTIVE SAFETY HEAD GEAR, LONG PANTS, WORK BOOTS, GLOVES**



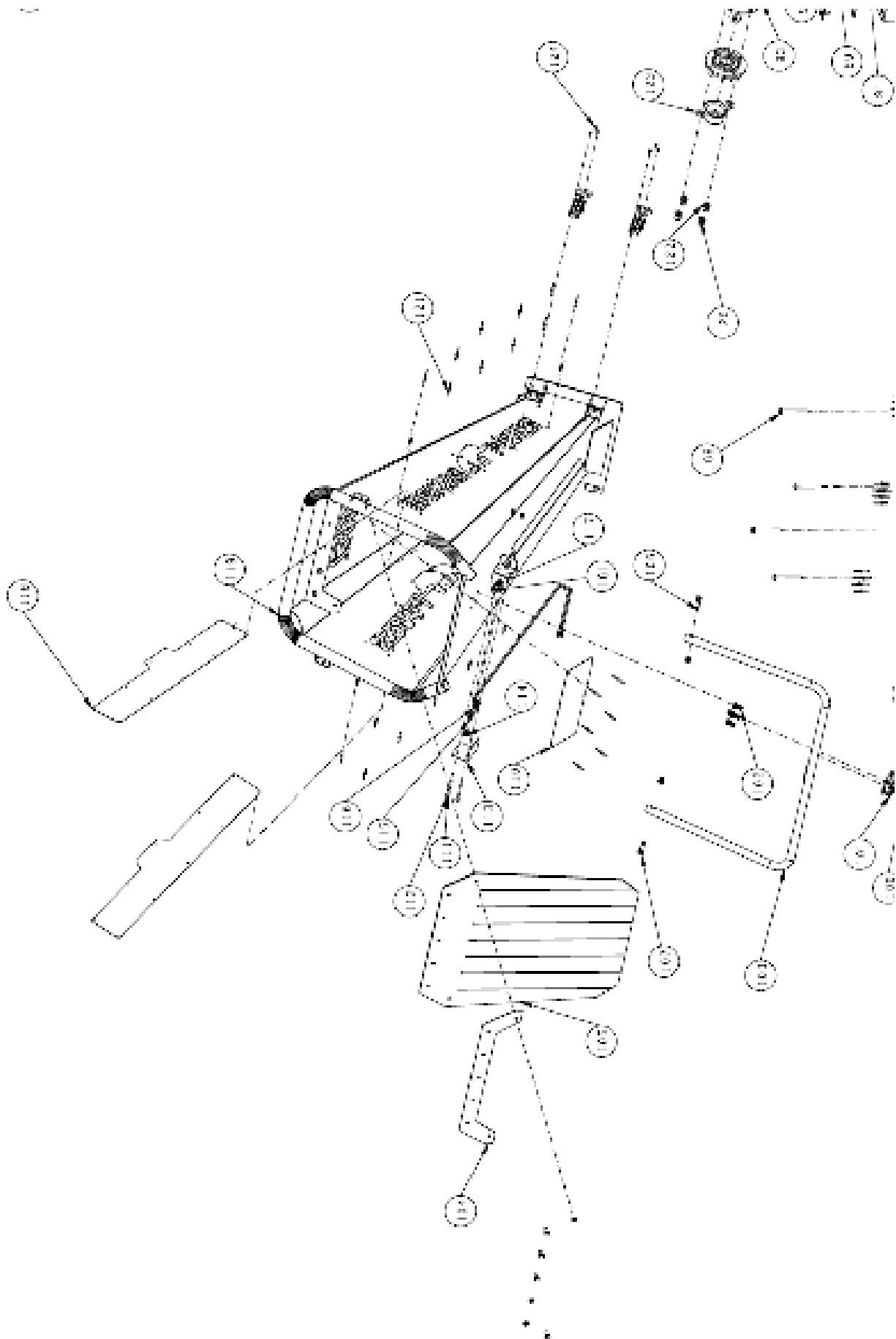
BBC62 PARTS LIST

NO	Name	NO	Name	NO	Name
1	Upper discharge	58	Roll M2025	114	Twisted step nut
2	Washer	59	Roller Nut	115	Steel connection nut
3	Metal bushing	60	Roll cover inner plate	116	Roller
4	Top plate	61	Roll cover inner plate gasket	117	Block washer 10
5	Key 8*10*20	62	Roll 2412	118	Lower cover plate
6	Roller	63	Roll M2024	119	Pin 10x1
7	Quick lock screw M5	64	Roll cap	120	Spring 10
8	Lower discharge	65	Roller nut	121	Adjusting screw
9	Roll M1212	66	Washer 25*15*3	122	Washer 12
10	Roll M1015	67	Washer	123	Rolling seat cover
11	Roll M1015	68	Roller M2025-2	124	Roll M2022
12	Washer 10	69	Roller	125	Pin 10x1
13	Front axle cover	70	Rolling 70302	126	Roll M10150
14	Spring 10	71	Lower shaft bolt policy side cover	127	Roller nut
15	Spring 10	72	Roll M10001	128	Roll M2020
16	Front wheel main frame	73	Lower connecting plate and plate	129	Flange fastener
17	Twisted frame main frame	74	Roll	130	Roll support adjusting block
18	Roller bolt	75	Pin 10x1	131	Key 6*10*100
19	Screw	76	Roll M10155	132	Roller policy spacer
20	Roll M10	77	Roll M10020	133	Roller engine
21	Roll M10150	78	Roller	134	Disc spring rubber cushioning pad
22	Roller	79	Roller	135	Roller front bearing plate
23	Washer 10	80	Roll M10020	136	Roller bolt bracket and wheel fairing block
24	Roll M10020	81	Roller bolt and roller plate	137	Roller
25	Roller 15	82	Spring 10	138	Roller roller with
26	Roller 15	83	Roll 2	139	Roller roller
27	Roll	84	Roller bolt	140	Roll M2020
28	Roll M10000	85	Roller 25x100	141	Roll M12020
29	Roller	86	Roller pin 10x1	142	Roller roller
30	Roller 10	87	Roller and roll	143	Roller
31	Roller roller 10x1	88	Roll M2020	144	Roll 10x10
32	Roll M1015	89	Roller plate	145	Roll M2020
33	Roller	90	Roller block	146	Roller roller
34	Roller 10x1	91	Roller roller roller	147	Roller
35	Roller	92	Roller cap	148	Roller
36	Roller 10x1	93	Roller roller roller roller	149	Roller roller roller roller
37	Roll M2020	94	Roller roller	150	Roller roller roller
38	Roll M2020	95	Roller roller	151	Roller roller roller
39	Roll M2020	96	Roll M10100	152	Roll M10100
40	Roll M2020	97	Roller roller roller roller	153	Roller roller roller
41	Roller roller roller	98	Roller roller roller roller roller	154	Roll M1010
42	Roller roller roller roller	99	Roller roller roller roller	155	Roller roller
43	Roller roller roller roller	100	Roller roller	156	Roller roller
44	Roller roller roller roller	101	Roller roller	157	Roll M1010
45	Roller roller roller roller	102	Roller roller	158	Roller roller
46	Roller roller roller roller	103	Roller roller roller roller	159	Roller roller roller roller
47	Roller roller roller roller	104	Roller roller roller roller	160	Roller roller roller roller
48	Roller roller roller roller	105	Roller roller roller roller	161	Roller roller roller roller
49	Roller roller roller roller	106	Roller roller roller roller	162	Roller roller roller roller
50	Roller roller roller roller	107	Roller roller roller roller	163	Roller roller roller roller
51	Roller roller roller roller	108	Roller roller roller roller	164	Roller roller roller roller
52	Roller roller roller roller	109	Roller roller roller roller	165	Roller roller roller roller
53	Roller roller roller roller	110	Roller roller roller roller	166	Roller roller roller roller
54	Roller roller roller roller	111	Roller roller roller roller	167	Roller roller roller roller
55	Roller roller roller roller	112	Roller roller roller roller	168	Roller roller roller roller
56	Roller roller roller roller	113	Roller roller roller roller	169	Roller roller roller roller

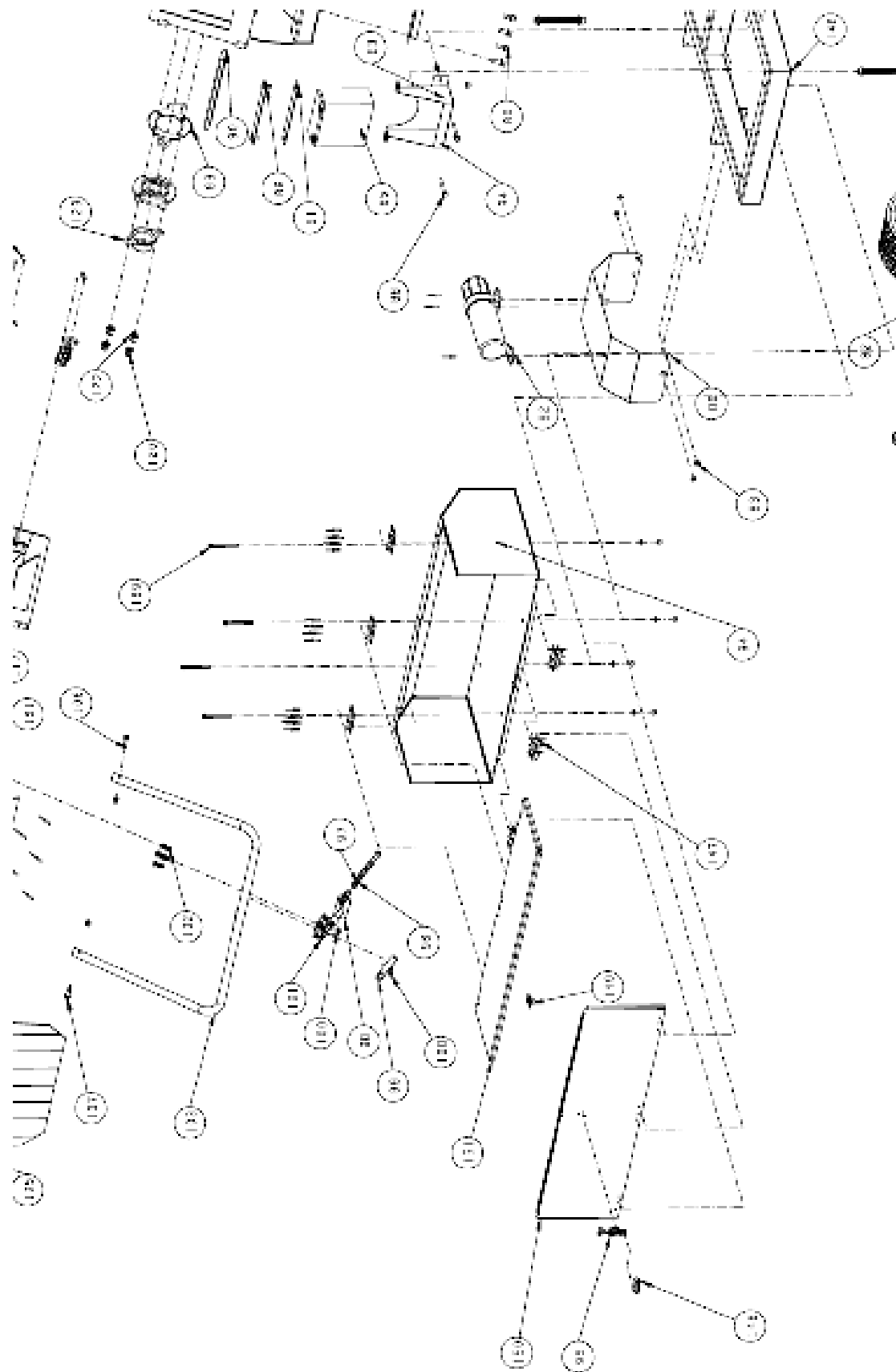
BBC62 PARTS DRAWING



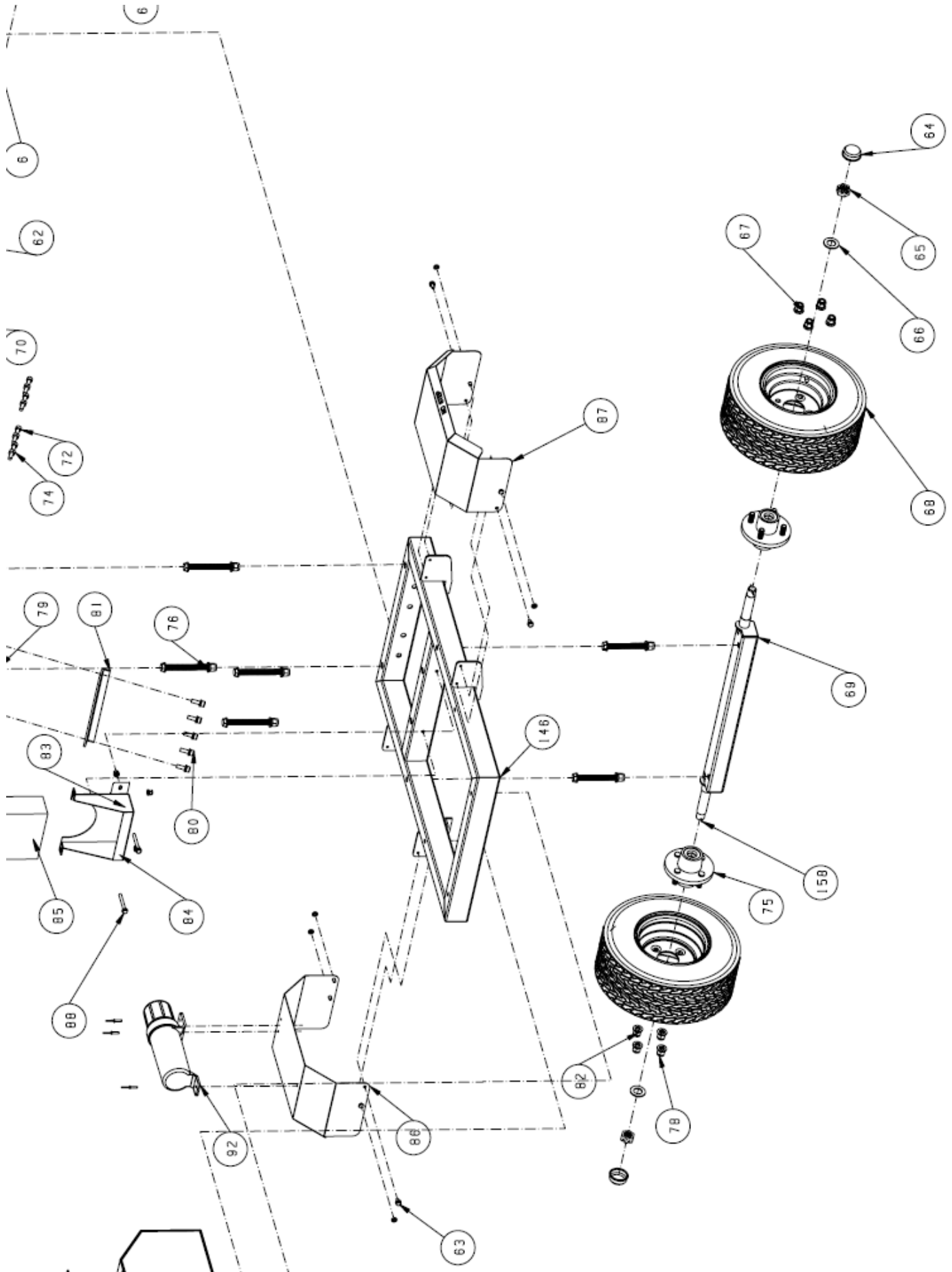
BBC62 PARTS DRAWING



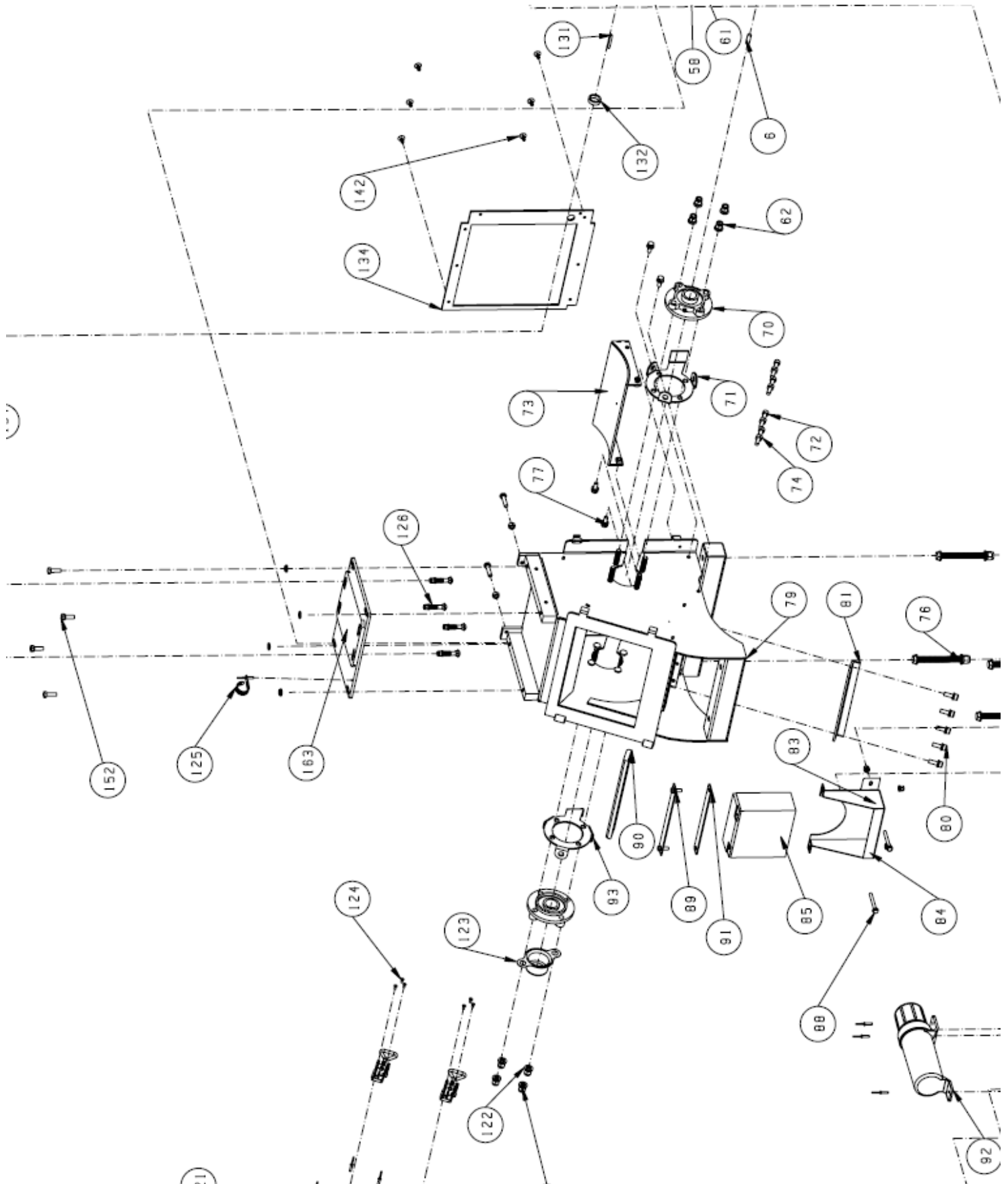
BBC62 PARTS DRAWING



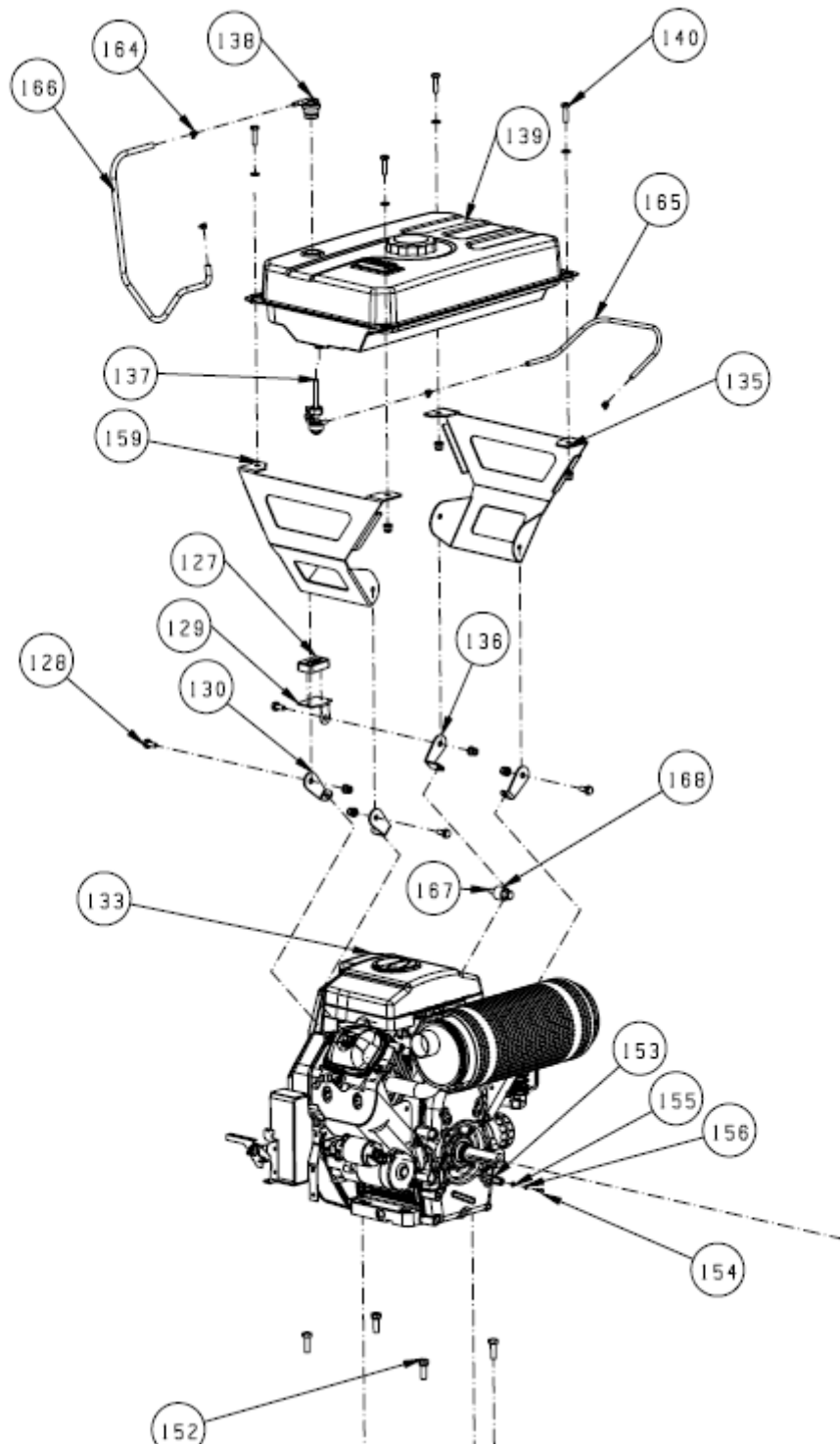
BBC62 PARTS DRAWING



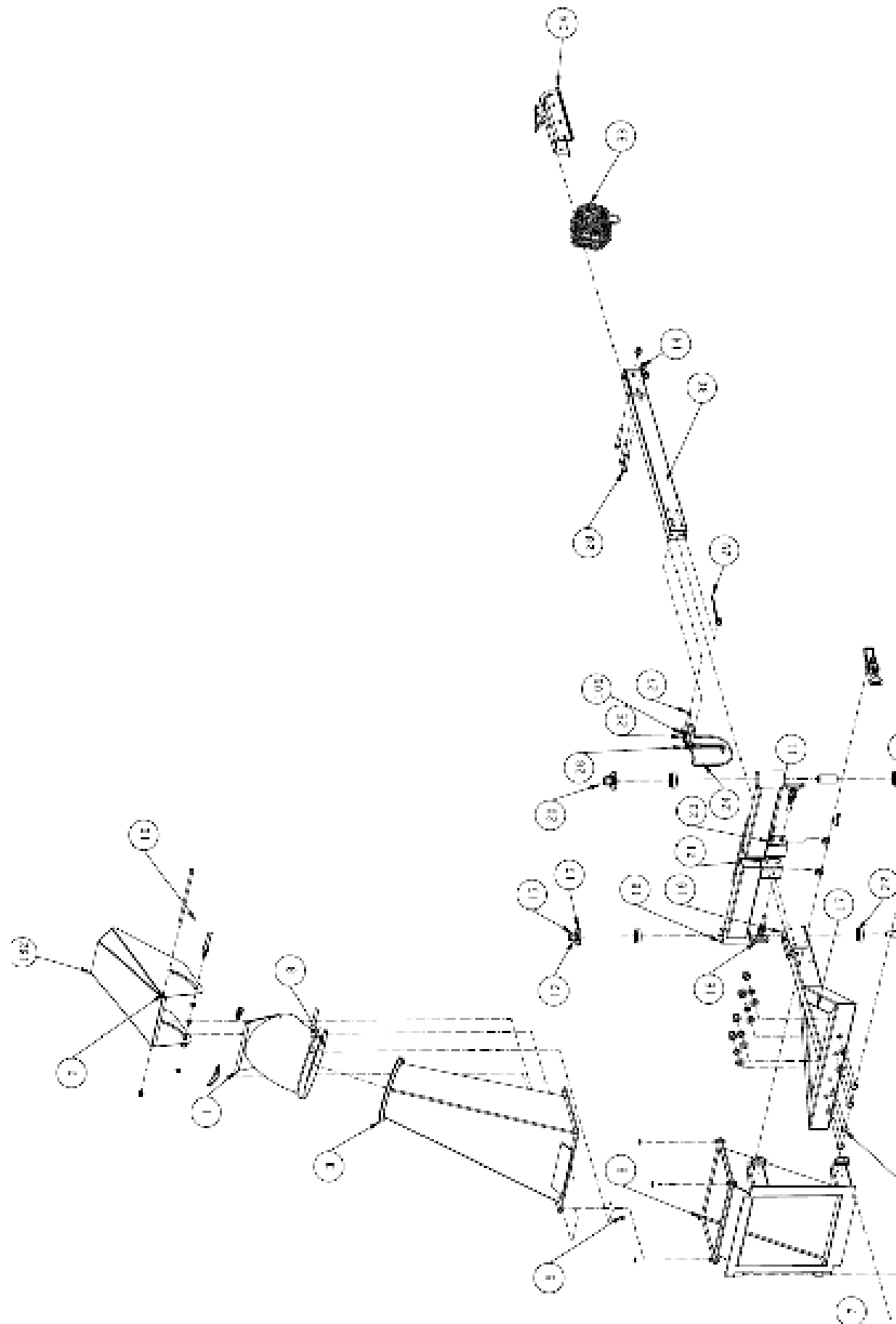
BBC62 PARTS DRAWING



BBC62 PARTS DRAWING



BBC62 PARTS DRAWING



This diagram shows an exploded perspective view of a mechanical assembly. The components are numbered as follows: 1, 2, 3, 4, 5, 6, 7, 8, 9, 10, 11, 12, 13, 14, 15, 16, 17, 18, 19, 20, 21, 22, 23, 24, 25, 26, 27, 28, 29, 30, 31, 32, 33, 34, 35, 36, 37, 38, 39, 40, 41, 42, 43, 44, 45, 46, 47, 48, 49, 50, 51, 52, 53, 54, 55, 56, 57, 58, 59, 60, 61, 62, 63, 64, 65, 66, 67, 68, 69, 70, 71, 72, 73, 74, 75, 76, 77, 78, 79, 80, 81, 82, 83, 84, 85, 86, 87, 88, 89, 90, 91, 92, 93, 94, 95, 96, 97, 98, 99, 100. The assembly includes a base (1), a central shaft (11), a motor (12), a gear (13), a pulley (14), a belt (15), a roller (16), a spring (17), a bracket (18), a housing (19), a cover (20), a door (21), a handle (22), a latch (23), a lock (24), a key (25), a pin (26), a screw (27), a nut (28), a washer (29), a bolt (30), a rivet (31), a clip (32), a pin (33), a screw (34), a nut (35), a washer (36), a bolt (37), a rivet (38), a clip (39), a pin (40), a screw (41), a nut (42), a washer (43), a bolt (44), a rivet (45), a clip (46), a pin (47), a screw (48), a nut (49), a washer (50), a bolt (51), a rivet (52), a clip (53), a pin (54), a screw (55), a nut (56), a washer (57), a bolt (58), a rivet (59), a clip (60), a pin (61), a screw (62), a nut (63), a washer (64), a bolt (65), a rivet (66), a clip (67), a pin (68), a screw (69), a nut (70), a washer (71), a bolt (72), a rivet (73), a clip (74), a pin (75), a screw (76), a nut (77), a washer (78), a bolt (79), a rivet (80), a clip (81), a pin (82), a screw (83), a nut (84), a washer (85), a bolt (86), a rivet (87), a clip (88), a pin (89), a screw (90), a nut (91), a washer (92), a bolt (93), a rivet (94), a clip (95), a pin (96), a screw (97), a nut (98), a washer (99), a bolt (100).



BIG BEAR POWER

**GX COMMERCIAL LLC
4301 S VALLEY VIEW BLVD. STE 10 AND 11
LAS VEGAS, NV 89103**

EXTENDED 5YR LIMITED WARRANTY

- GX COMMERCIAL LLC WARRANTS THIS WOODCHIPPER FOR MANUFACTURES DEFECTS FOR 5 YEARS BOTH ENGINE AND CHASSIS AS FOLLOWS.
- GX COMMERCIAL LLC WILL PROVIDE PARTS AND LABOR WITHIN THE FIRST 30 DAYS AT NO COST TO THE ORIGINAL PURCHASER. GX COMMERCIAL LLC WILL REPAIR OR REPLACE AT OUR OPTION THE DEFECTIVE EQUIPMENT.
- AFTER 30 DAYS GX COMMERCIAL LLC WILL PROVIDE TO THE ORIGINAL PURCHASER FOR 5 YEARS REPLACEMENT PARTS FOR DEFECTIVE PARTS INCLUDING ENGINE AND ALL CHASSIS COMPONENTS.
- ITEMS NOT COVERED BY THIS WARRANTY AFTER 30 DAYS ARE REPAIR LABOR, BLADES, BELTS, TIRES, CUTTING BARS, NUTS AND BOLT HARDWARE AND BATTERIES.
- CUSTOMER ACCEPTED FREIGHT DAMAGE IS NOT COVERED BY WARRANTY.
- MINOR SCRATCH AND DENTS FROM SHIPPING IS NOT COVERED.
- RATO ENGINES ARE 1 YEAR WARRANTY, A 4 YEAR OEM COMMERCIAL EXTENDED WARRANTY IS INCLUDED AT NO EXTRA COST. GX COMMERCIAL LLC WILL REPAIR OR REPLACE RATO ENGINES AT OUR CHOICE FROM 5 YEARS FROM PURCHASE DATE. WARRANTY NOT TRANFERABLE.
- THIS EXTENDED WARRANTY APPLIES TO BOTH RESIDENTIAL AND COMMERCIAL USE OF THE EQUIPMENTS BASED ON PROPER MAINTENACE AND RECORDS OF PROVEN REGULAR SCHEDULED OIL CHANGES, FILTERS AND SPARK PLUG MAINTENACE. NON-INTENDED USE OR MISUSE OF EQUIPMENT IS NOT COVERED.
- DEFECTIVE EQUIPMENT UNDER WARRANTY IS REQUIRED TO BE REPAIRED BY A LICENCED MECHANIC. PARTS WILL BE SENT TO THE REPAIR SHOP OF THE CUSTOMERS CHOICE AT NO COST DURING THE WARRANTY PERIOD.