

Meter Insights

QR code feature Quick start guide

Unlock the capabilities of your PowerLogic™ PM5000 meter with the QR code feature:

- Detailed energy use patterns
- Trends in energy consumption
- Alarms for possible issues

View information from your meter:

- See all previous QR scans
- See notifications of possible issues and improvements you can make
- Share information with colleagues



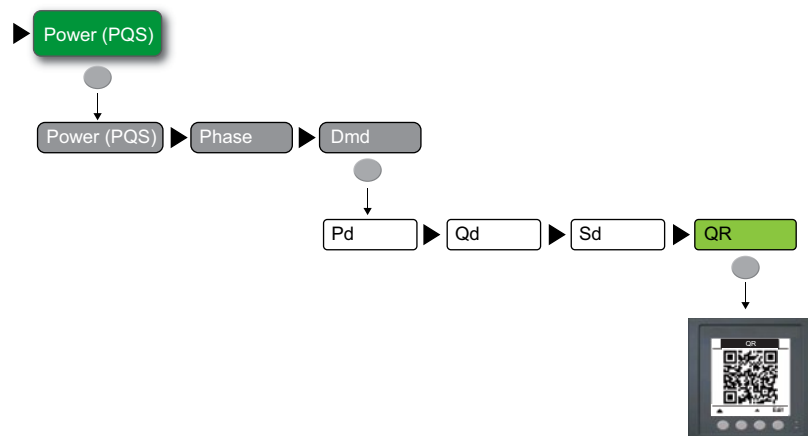
Step 1

Find your QR code

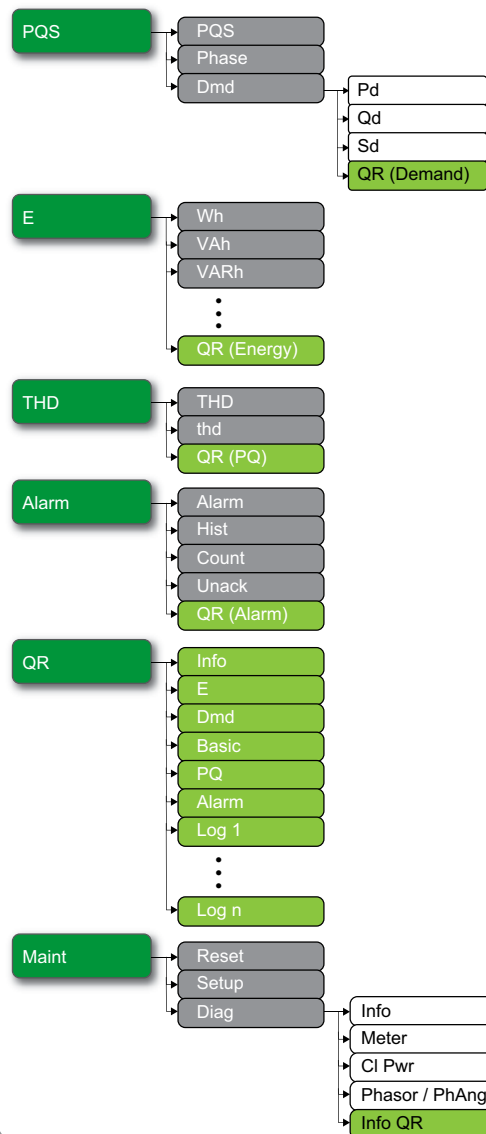
Navigate through your meter's display to the screen with the QR code for the information you want to view.

For example, to retrieve demand values:

1. Press ► to scroll through your meter's main display screens.
2. Press the selection button (●) under **Power (PQS)** then press the selection button under **Dmd**.
3. Press ► to scroll through the demand screens then press the selection button under **QR** to display the Dmd QR code.



PM5100 / PM5300 / PM5500



QR code Information

| QR code | Information |
|----------------------|---|
| Info | <ul style="list-style-type: none"> • Power system configuration • Nominal frequency • Total alarm counter • CT primary and secondary • VT primary and secondary • Total power factor • Communications settings |
| Basic | <ul style="list-style-type: none"> • Per phase and average current • Average voltage L-L or L-N • Total active, reactive and apparent power |
| PQ | <ul style="list-style-type: none"> • THD values • Current and voltage unbalance • Power factor |
| Dmd (Demand) | <ul style="list-style-type: none"> • Peak demand value with timestamp for active, reactive and apparent power • Date of last power peak demand reset |
| E (Energy) | <ul style="list-style-type: none"> • Active, reactive and apparent energy delivered and received • Date of last power peak demand reset |
| Alarm | Information about any active alarms and records from the alarm history log, including timestamps |
| Log 1 – Log n | Values from the log or logs available on the meter |

Step 2

Scan the QR code



Use a QR app and the camera on your smartphone or tablet to read the selected QR code on the display.

Best practices:

- Use a device with a camera resolution of 8 megapixels or higher
- Hold the camera steady and straight at the QR code (not at an angle)
- Fill as much of the frame as possible with the QR code
- Be aware of the ambient light – you may need to shade the camera from sources of bright light
- Be sure that the meter's display contrast is set high enough

The data embedded in the QR code is displayed in your phone's web browser (you may need to allow your QR app to access the website). Your meter's data is sent to our web server where it is analyzed and turned into information you can act on, such as notifications about possible issues and system configuration.

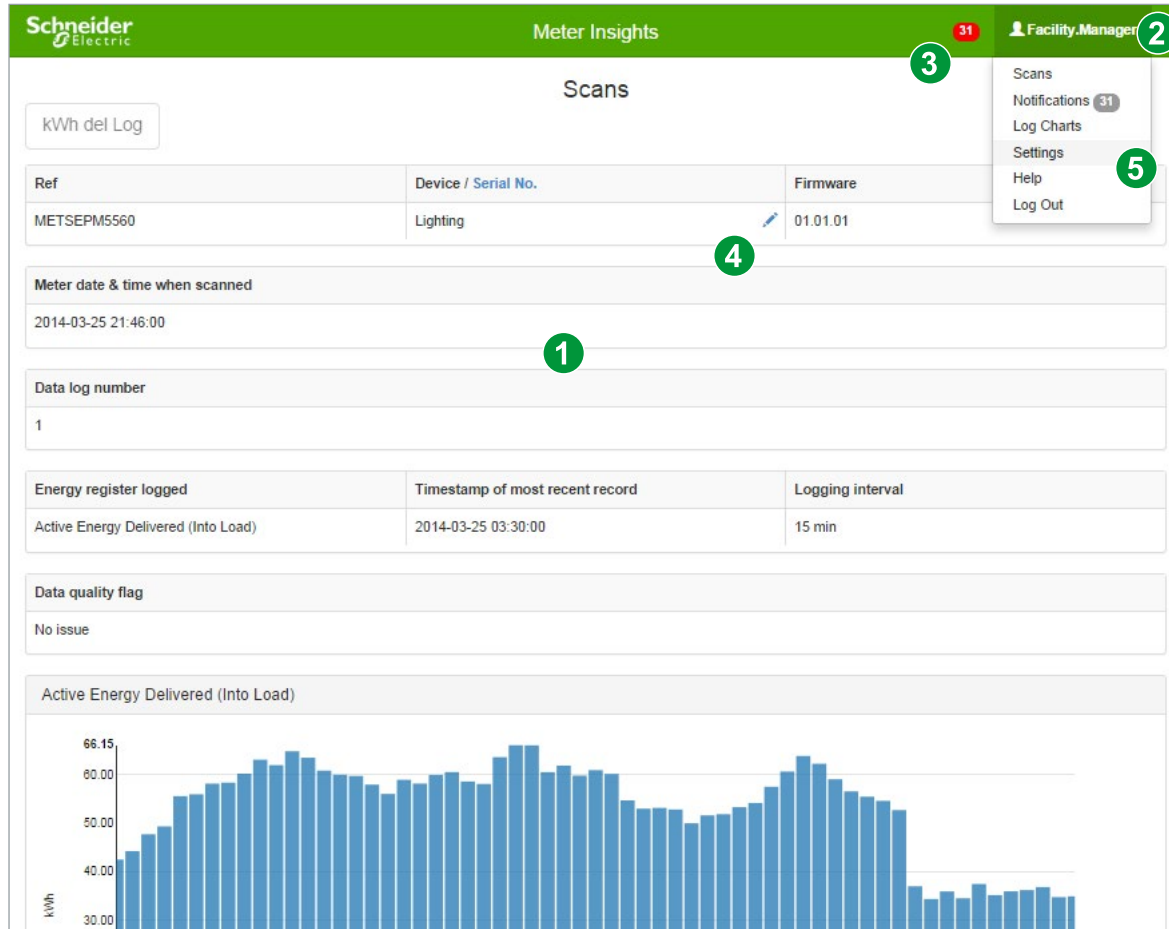
The information is also stored by Schneider Electric so you can view consolidated historical information.



QR reader apps are readily available from app stores, such as the iTunes App Store or Google Play. Search for "QR code".

Step 3

View your meter's data



After you register, you can also go to meterinsights.schneider-electric.com on your computer or mobile device to view information from past scans for all meters you have scanned, in addition to any existing notifications and tips

- 1 View data from your QR code scan
- 2 Register so you can build a record of your QR code scans, allowing you to access past scans, chart data over time and see notifications that compare current scans with data from previous scans
- 3 View notifications with tips for troubleshooting your system and improving your energy efficiency (this requires that you register)
- 4 Tap the pencil icon to set up a custom name for the meter. After a custom name is set up, tap the icon to toggle between the name and serial number.
- 5

| Page | Description |
|---------------|---|
| Scans | See all the QR scans for your meter(s) |
| Notifications | View any notifications resulting from the analysis of information from your meter(s) |
| Charts | View information from current and historical scans of log information in a chart |
| Settings | <ul style="list-style-type: none">• User: edit your user information (for example, name and address)• Devices: change meter settings (for example, meter name and scan visibility)• Notifications: enable / disable notifications |
| Help | Get more information on notifications and using Meter Insights |

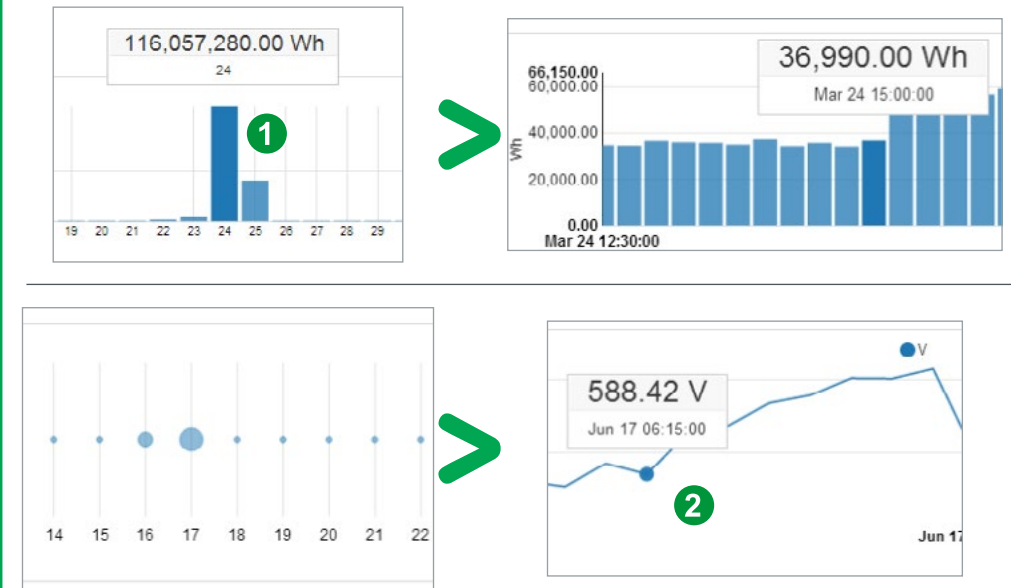
Navigating scan, chart and notification lists

- 1 Sort columns by tapping column title (for example, tap Scanned to sort by date and time)
- 2 Type a word in the search field to filter the scans or charts
- 3 Tap the sort icon to reverse the sort order
- 4 View a scan or notification by tapping on the title and view a chart by tapping on the meter name

The image shows three overlapping screenshots from a mobile application. The 'Scans' list has columns for Device, Age, and Scanned. The 'Log Charts' list has columns for Device and Last Scanned. The 'Notification' list has columns for Device, Notification, and Scanned. Numbered annotations indicate: 1. Tapping a column title to sort. 2. Using the search field to filter. 3. Tapping a sort icon to reverse order. 4. Tapping a notification title to view details.

Viewing chart information

- 1 Tap on a bar (bar graph) or point (line chart) to see more information
 - 2 Tap a bar or point to view the associated value
- ★ Data is only available for times when the meter was scanned. For example, if the meter was scanned on the 11th, 20th and 31st day of the month, only those days have bars or points.



Setting scan visibility

You can set who can view the information scanned from meter QR codes:

- 1 Go to **Settings > Devices**.
- 2 Set the Global Visibility to apply the setting to all meters, or Click a specific meter and set Meter Visibility to apply the setting to that one meter.

- ON: Other users scans of your meter(s) are visible to you and added to your scan history.
- OFF: Other users scans of your meter(s) are not visible to you.