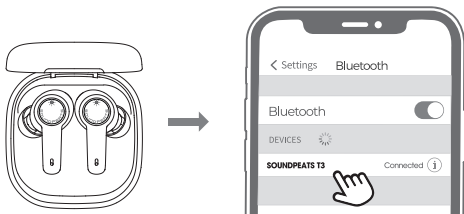


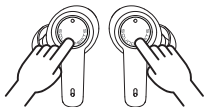
First Time of Using



1. Open the cover of the charging case, take out the two earphones, remove the insulation film on them separately, and then put both earphones back into the charging case. By this time, the left and right earphones will automatically enter the TWS mutual pairing state. After successful mutual pairing, the blue light in the right earphone will flash slowly and the blue light in the left earphone will always be on, and the two earphones will enter the pairing mode.
2. Then go to Bluetooth settings of your device, and choose SOUNDPEATS T3.

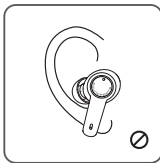
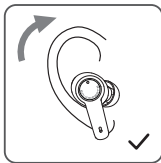
Reset

1. Clear the pairing data from your device.
2. Take out the two earphones from the charging case, press and hold the multifunctional buttons for 10s until the blue indicator lights in both earphones flash for three times and then go out. At this time, the earphones are off, and then press and hold the multifunctional buttons of both earphones again for 10s until the blue indicator lights flash twice, and the reset is completed.
3. Place the earbuds back into the charging case and close the case lid, waiting for seconds, and then open it again. The earphones are activated successfully.

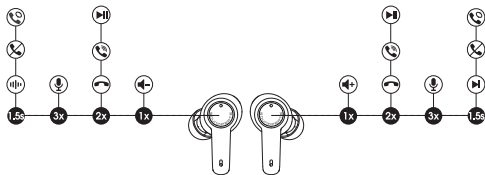


Wearing methods

1. Identify the left earphone and the right earphone.
2. Adjust the earphones to fit your ears.



Product Diagram



Control

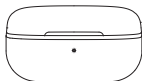
Power On	Auto: Open the charging case Manually: Press and hold the multifunctional button for 1.5s
Power off	Auto: Place the earbuds back into the charging case and close the case lid Manually: Press and hold the multifunctional button for 10s
Play/Pause	Double-tap on the multifunctional button
Volume-	Single-tap on the left multifunctional button
Volume+	Single-tap on the right multifunctional button
Next Track	Press and hold the right multifunctional button for 1.5s
Answer/Hang Up a Phone Call	Double-tap on the multifunctional button
Reject a Phone Call	Press and hold the multifunctional button for 1.5s
Switch Between Two Active Calls	Press and hold the multifunctional button for 1.5s
Manual Pairing	Take out the two earphones from the charging case while they are connected to your device, and then press and hold the multifunctional buttons for 6s.
Activate the Voice Assistant	Press the multifunctional button for three times
ANC/Transparency mode	Press and hold the left multifunctional button for 1.5s

Q&A

Q1: What does the indicator of the charging case display?

1) The battery life of the charging case:

100%—50%	Green
49%-10%	Yellow
<10%	Red



2) Charging status of the charging case:

<10%	Stay on Red
11%-49%	Stay on Yellow
50%-99%	Stay on Green
100%	Off

Q2: How to charge the charging case?

1. Connect the charging case to a Type-C charger. (The current does not exceed 1A).
2. If the earphones stay idle for an extended period of time, charge them at least every three months to prevent the battery from being damaged.

**Q3: Why are the earphones still connected to the phone when they are put back to the charging case and the case lid is closed?**

1. Check whether the charging case has battery power. If it has run out of battery, closing it will not disconnect the earphones from the device.
2. Make sure the headphones are properly placed in the charging case and the charging metal sheet and PIN are both clean. And wiping clean the contact points on the earphones and the charging case should fix this issue.