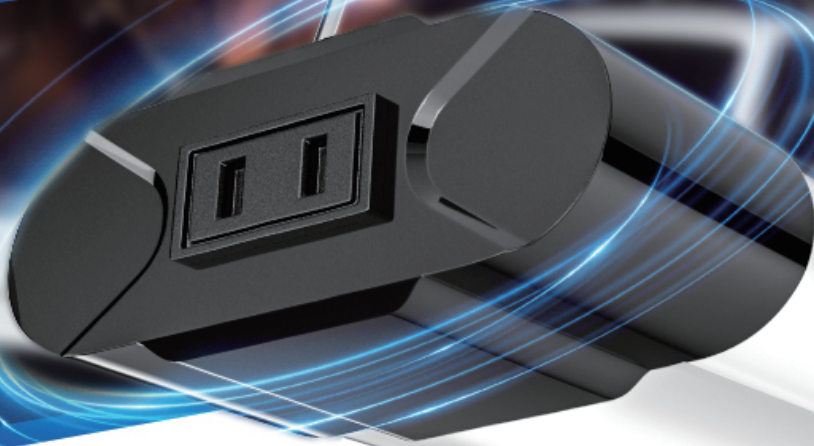


LED SHOP LIGHT USER MANUAL



Product Description



4400
Lumens



D-Shaped
Light Tube



6500K
Daylight White



5-Year
Warranty



250W
Equivalency



4 Lights
Linkable

SAFETY INFORMATION

IMPORTANT:

Read all safety precautions and installations carefully before installing this fixture.

RISK OF FIRE

- 1 Only 4 lights can be connected in series at a time. If more than 4 lights are connected, the temperature of the wires will rise which may lead to fire issue.
 - 2 Connection to external high-power devices is strictly prohibited. It may also cause fire.
 - 3 Keep the flammable articles away from lights.
-

RISK OF ELECTRIC SHOCK

- 1 All electrical connections must be in accordance with local and National Electric Code Standards.
 - 2 Do not handle electrified fixture with wet hands while standing on a wet or damp surface or in water.
 - 3 Turn off the switch and circuit breaker before installing the fixture.
 - 4 Do not alter, relocate or remove the wiring during installation.
-

RISK OF INJURY

- 1 Wear gloves and safety eyeglasses when installing the fixture or performing the maintenance.
 - 2 Avoid direct eye exposure to the light source while it is on.
-

INSTALLATION TIPS

- 1 Assure that the fixture is mounted onto a structurally sound surface that will support the fixture.
- 2 Maximum distance to the receptacle is determined by the length of the cord provided.
- 3 The fixture is intended to be installed directly beneath a ceiling-mounted receptacle. Excess cord should be secured to one of the supporting chains with a cable tie to keep it out of the work space.





WARNING:

Failure to comply with these instructions could result in a potentially fatal electric shock and property damage.

COMPONENTS

Each light contains the following parts

Check that there is no shortage before starting the installation

			
x 2	x 3	x 3	x 3
Hanging Chain with Hook	Plastic Dry Wall Anchor	Screw	Ceiling Hook

⚠ Note:

The unit is intended to be installed directly beneath a ceiling-mounted receptacle. If there is excess cord, bind with string or a cable tie to keep it out of work space.

INSTALLATION

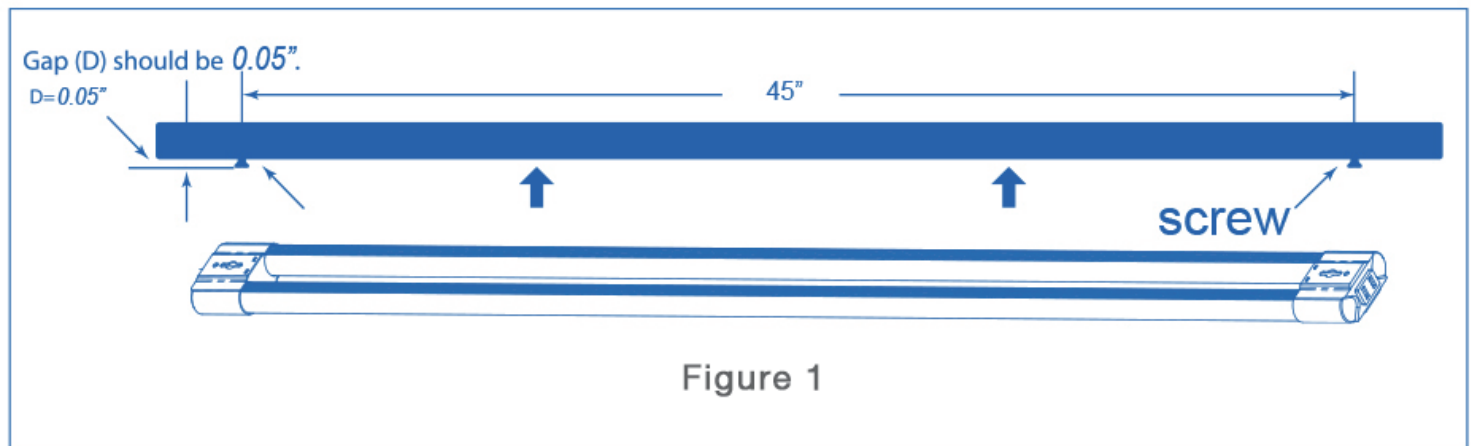
CEILING INSTALLATION

Required Accessories

X2 Screw / X2 Ceiling Hook / X2 Plastic Dry Wall Anchor

Install fixture flushmount using screws

- 1 Install two screws on mounting surface, spacing between screws should be 45" (4ft lamp), 33" (3ft lamp), 21" (2ft lamp).(Figure 1)



- 2 Lift fixture up to screws and slide to one side to secure into place. Fixture should be firmly fixed against screws. (Figure 2)

- 3 Plug in power cord to outlet.

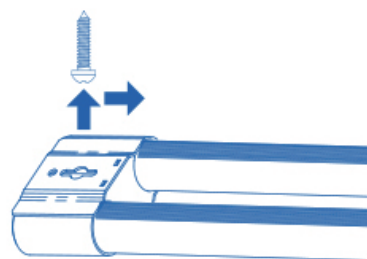


Figure 2

Suspending Installation

Required Accessories

X2 Hanging Chain with Hook / X2 Ceiling Hook / X2 Plastic Dry Wall Anchor

Attach the ceiling hooks

- 1 Choose desired location of light fixture making sure it is within reach of an outlet. Use a pencil to place a mark on the ceiling where each ceiling hook should go. Screw hooks in place until secure. (Figure 3)



Figure 3

- 2 Hook the hanging chain with lamp. (Figure 4)

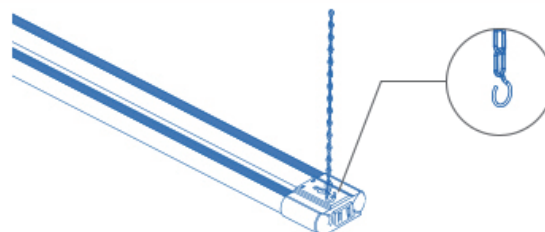


Figure 4

- 3 Hook the hanging chain with ceiling hook (Figure 5)
- 4 Plug in power cord to outlet.

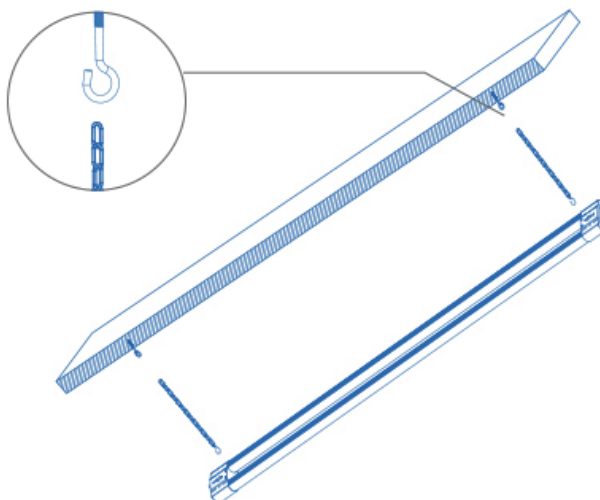


Figure 5

INSTALLATION PRECAUTIONS

1

If multiple lights are to be installed, make sure the distance from the end of front light to the head of next one is less than the 5' long power supply cord.

2

Plug the power cord into the receptacle from front light to next one (Figure 6)

3

Plug power cord into an outlet and use pull chain to power each light on. (Figure 6)

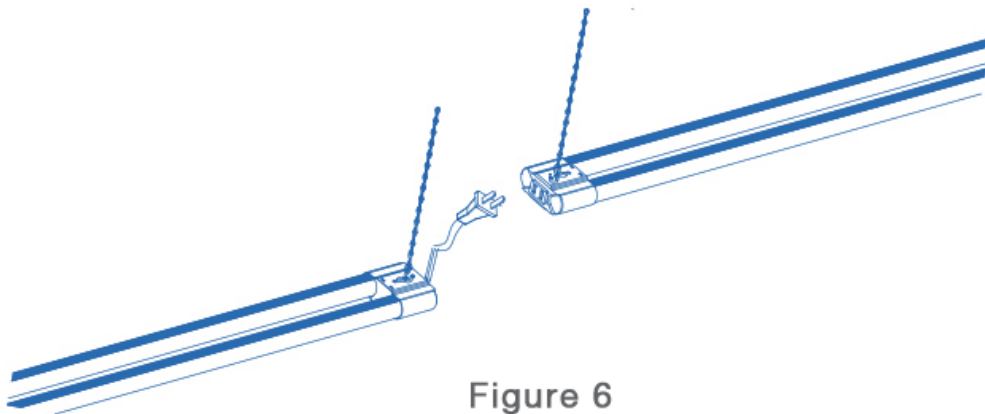


Figure 6

⚠ NOTE:

To preclude the risk of fire: only 4 lights can be connected in series at a time, connection to external high-power devices is strictly prohibited.