



**A6 Single-Use Injector with
*AT.Smart Cartridge Set**

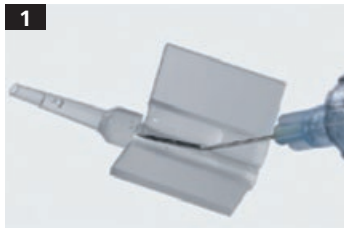
Handling instructions for
non-preloaded ZEISS MICS IOLs



We make it visible.

A6 Single-Use Injector with *AT.Smart Cartridge Set

Preparing the non-preloaded ZEISS MICS IOLs for use.



Fill the barrel halfway with viscoelastic substance, preferably with hypromellose. Put two lines of viscoelastics to the plane of the cartridge. Do not touch the tip of the cartridge.



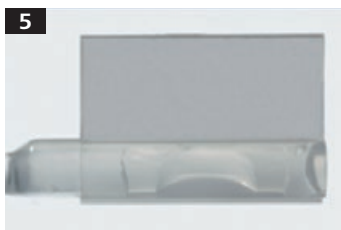
Pull the lens gently from its holder using a forceps with fine tips. Do not let the IOL dry up. Do not use the fluid from the bottle for ocular irrigation.



Place the lens in the center of the opened cartridge.



Hold optic down, center the IOL on the loading deck of the cartridge. Close the cartridge without clamping the lens.



Control the position of the lens within the channel of the closed cartridge. Haptic must move freely.



Injector A6 with groove for introduction of the *AT.Smart cartridge.



Push the loaded cartridge from the front into the groove until stop position.



Lock cartridge by holding the tip and rotating the injector.



Gently push plunger forward and check regular and continuous forward movement of the lens.

Please refer to our webpages for diopter range applicable for each MICS IOL.



*AT.Smart Cartridge



Single-use injector A6 with silicone tip

EN_32_022_00251
Single injector A6 is a reference of MDJ (CE 120). The contents of the brochure may differ from the current status of approval of the product in your country. Please contact our regional representative for more information. Subject to change in design and scope of delivery and as a result of ongoing technical development. Printed on elemental chlorine-free bleached paper.
© 2015 by Carl Zeiss Meditec AG. All copyrights reserved.



Carl Zeiss Meditec AG
Goeschwitzer Str. 51–52
07745 Jena
Germany
www.zeiss.com/iol
www.zeiss.com/med/contacts



AT.Smart Cartridge Set

