

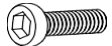

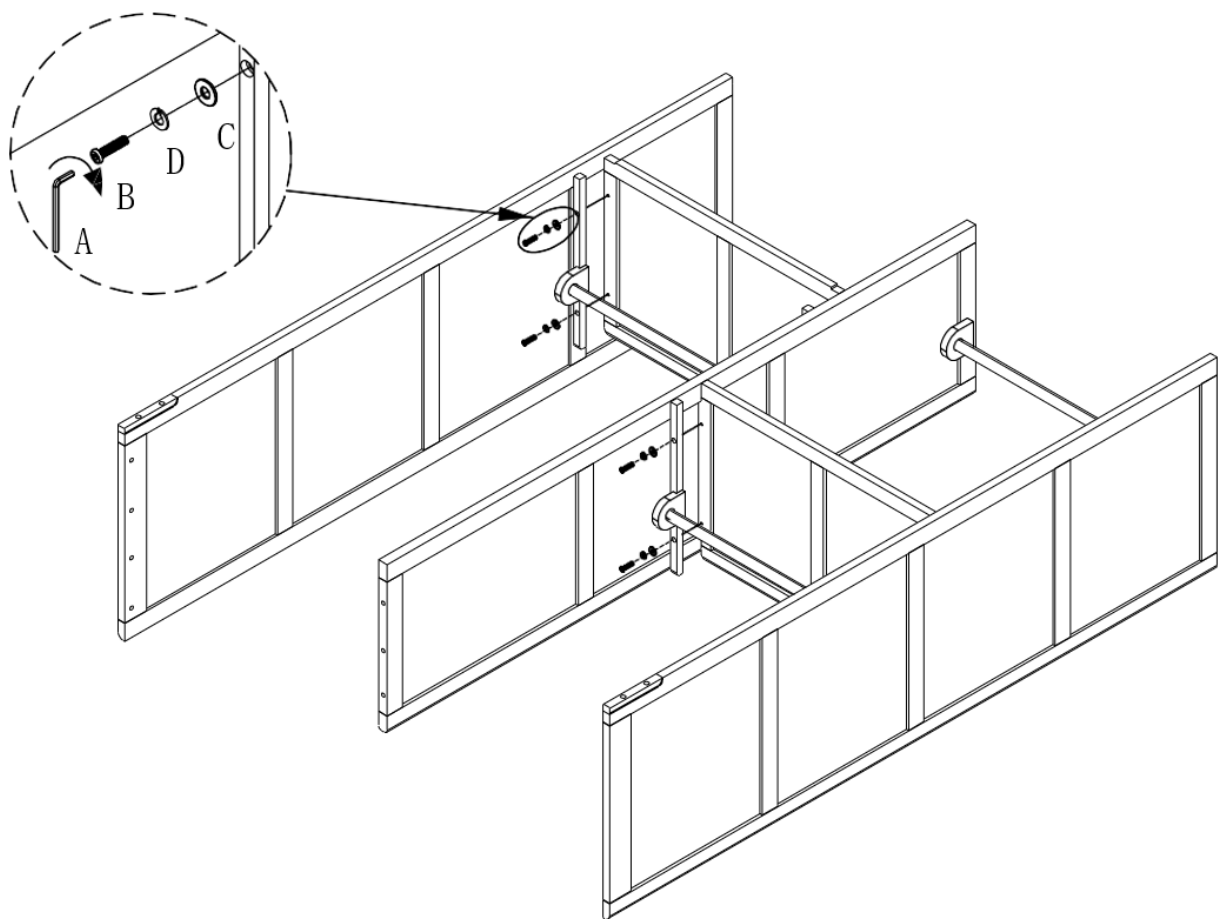
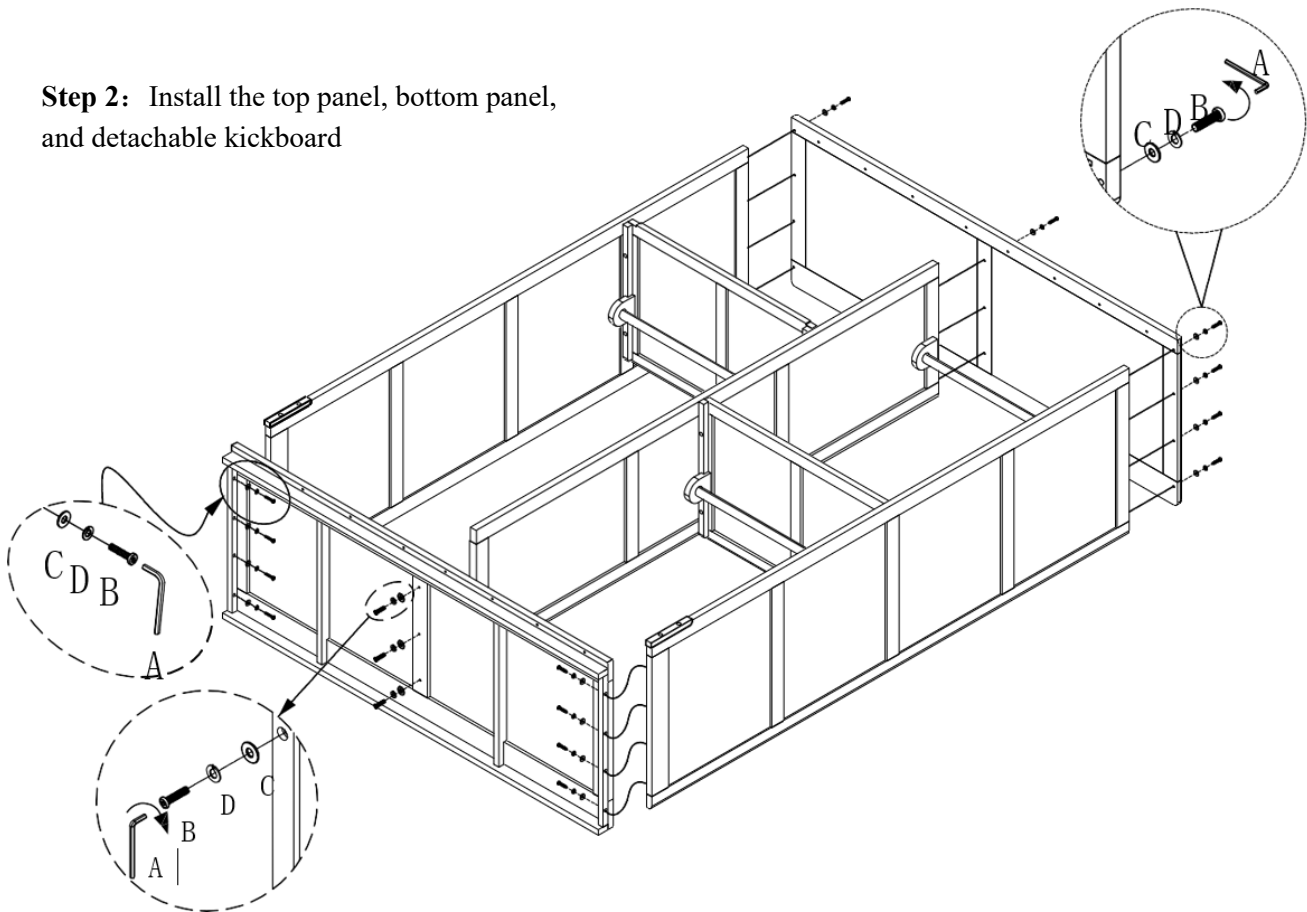

A. 4# = 2	B. M6*30= 50	C. Ø6*14=50	D. Ø6*12=50
			
E. M3.5×30=19	F. Adjustable Levelling Foot=4	G. M6×25=4	H. Felt Pads =6

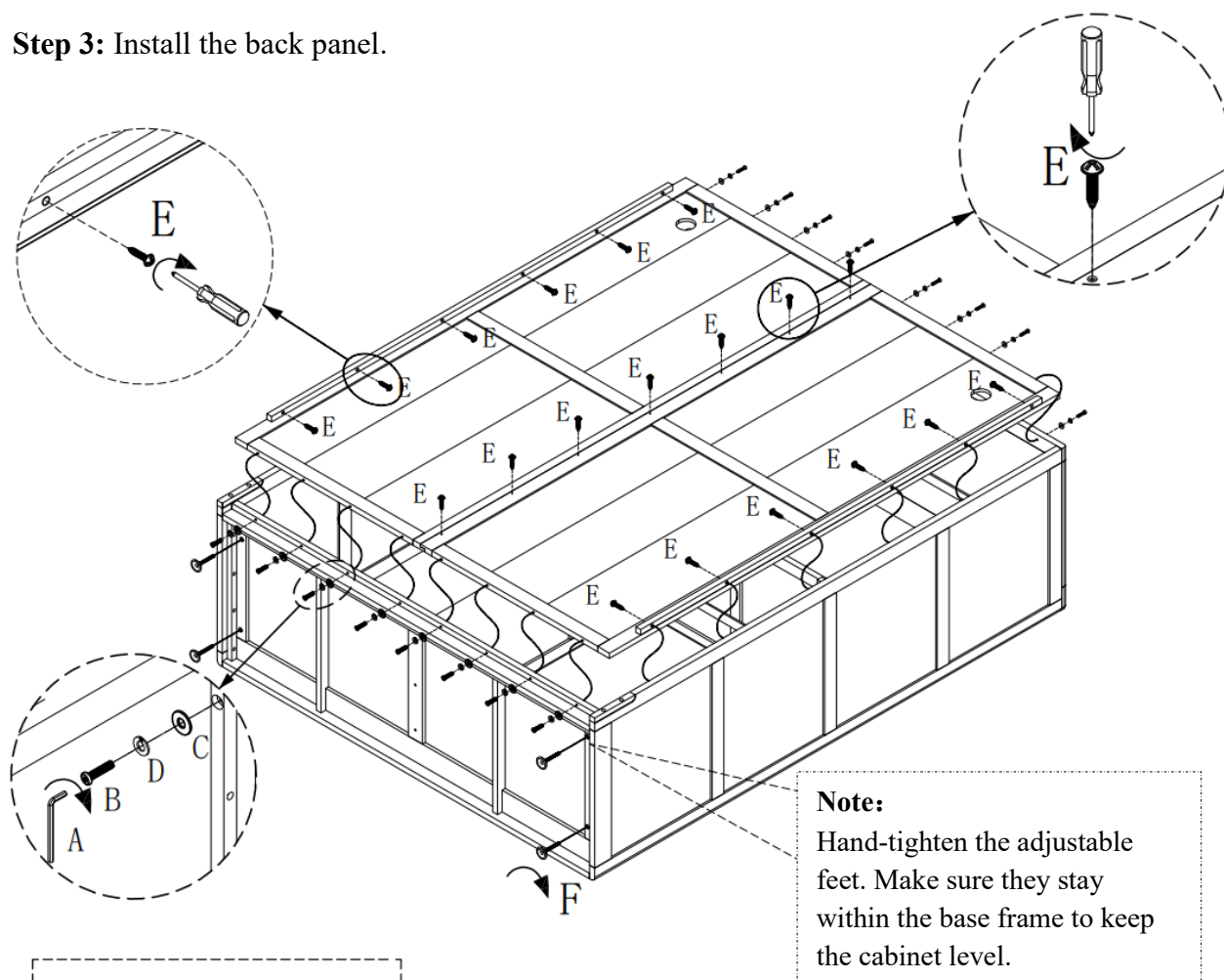
Step 1: Attach the side panels, internal dividers, and clothes rails.



Step 2: Install the top panel, bottom panel, and detachable kickboard

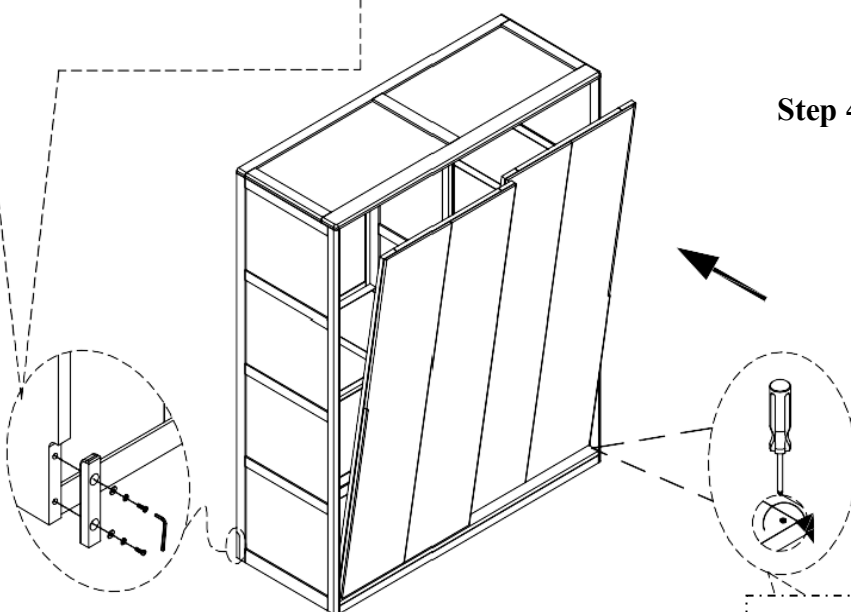


Step 3: Install the back panel.



Note:
Remove the skirting board with Allen key (A), if needed.

Step 4: Install the wardrobe doors.



Use the adjustment holes at the four corners of the wardrobe base to level the cabinet.