



# NSA310

## Support Note

Version 1.00

July, 2011



Share and Learn. Join ZyXEL Forum Now !

<http://forum.zyxel.com>

uub3v1o1durszyxer.com

# Content

Chapter 1 Applications .....	3
1. NAS Starter Utility .....	3
2. Auto Upload Service.....	11
2.1 Auto-upload pictures to Flickr .....	11
3. Package Management.....	17
Chapter 2 FAQ .....	21
1. What is RAID?.....	21
2. What kind of RAID is supported in NSA310?.....	21
3. What is the file system supported in NSA320?.....	21
4. Which kind of the multimedia server does NSA310 support?.....	21
5. Does NSA320 support DLNA media server? .....	21
6. Which kinds of video file format are supported by NSA310?.....	21
7. Which kinds of audio file format are supported by NSA310?.....	21
8. Which kinds of image file format are supported by SA310?.....	21
9. What is the feature “Wake On LAN”?.....	22
10. Which kinds of web browsers are supported by NSA310?.....	22


# Chapter 1 Applications

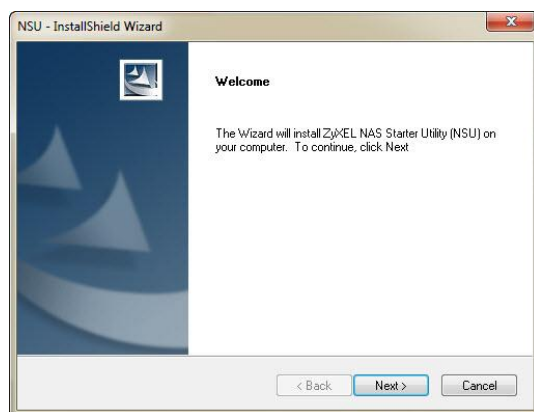
# 1

## 1. NAS Starter Utility

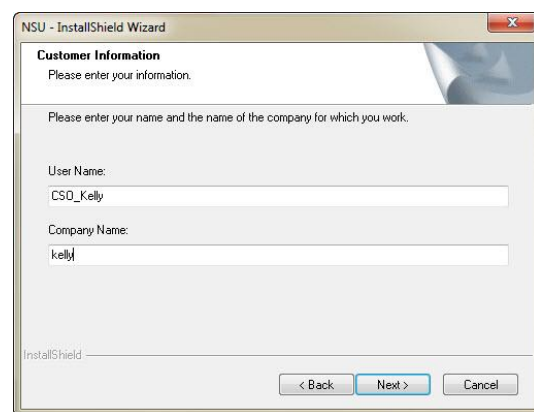
### 1. 1.1 NAS Starter Utility Installation

After you install a new hard drive on the NSA310, please make sure to use the NAS Starter Utility to discover and access the NSA310 to assign an IP address by DHCP or a static IP. The steps are as below.

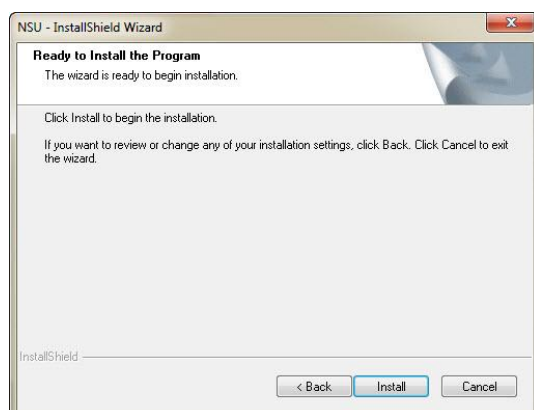
- Double-click setup.exe.  NSU\_2.02\_build\_1029\_Eng.exe
- Click “Next” to begin the installation.



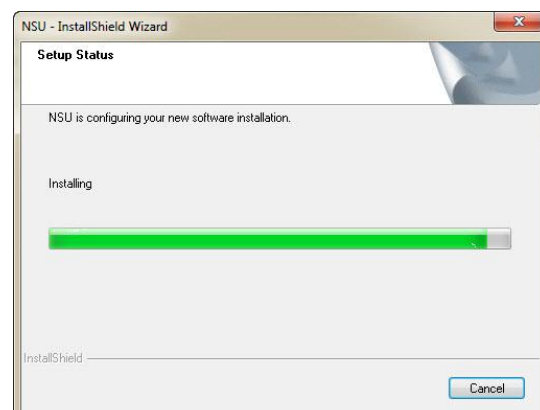
**Figure 1.** Click “Next”



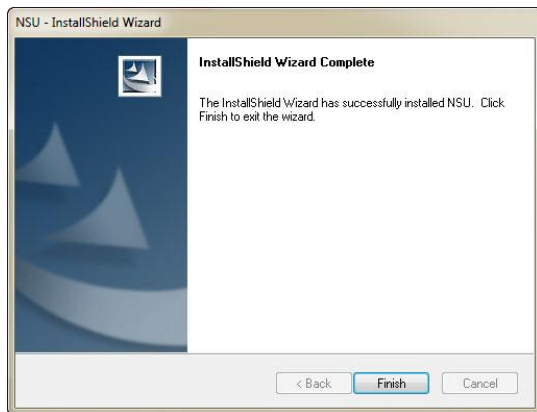
**Figure 2.** Select a folder to install the utility.



**Figure 3.** Click “Install”



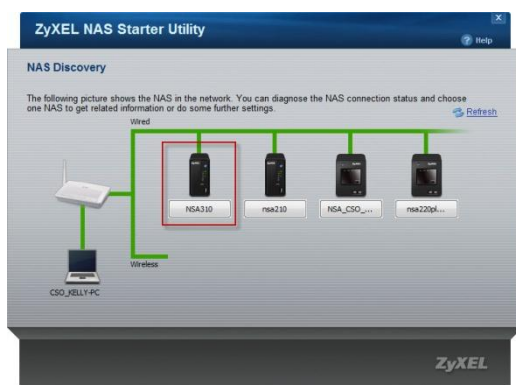
**Figure 4.** NSU Installation is processing.



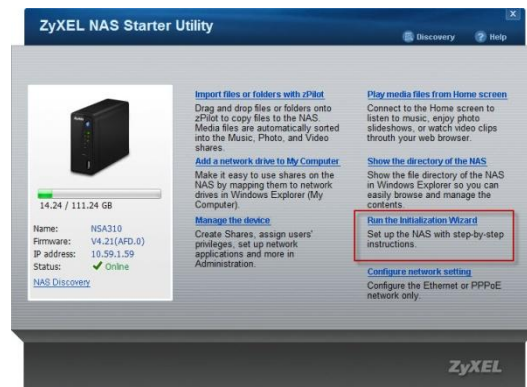
**Figure 5.** Installation is finished.

## 2. 1.2 NSA310 Initialization

After successful installation, click the “NAS Starter Utility”. The first screen of NSU shows the result of NSA Discovery. Click your NSA310’s button and click **Run the Initialization Wizard** to set up the NAS310. If the connection is green, it means this NAS is able to be reached by the PC shown in the screen. If the connection is red, this NAS is not able to be accessed by the PC.

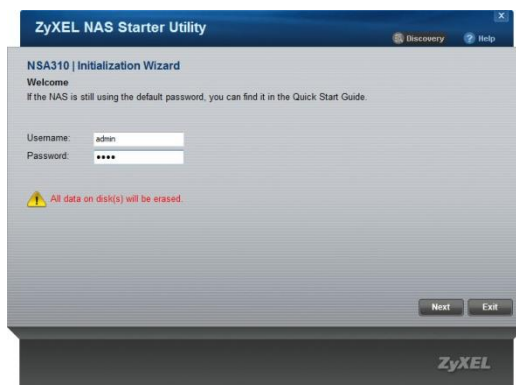


**Figure 6.** NAS Discovery.



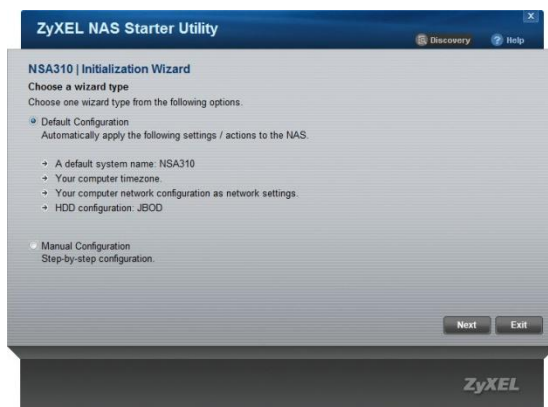
**Figure 7.** Run Initialization

Then enter the username and password to start the initialization. The default username is **admin** and the password is **1234**. These two words are case sensitive.

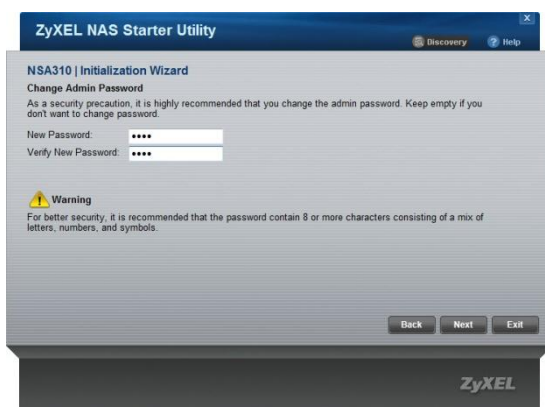


**Figure 8.** Enter username and password.

Choose **Default Configuration** or **Manual Configuration** and then click **Next**. Here, we recommend users use **Default Configuration**. For security issue, we suggest users change the admin's password.



**Figure 9.** Choose a wizard type

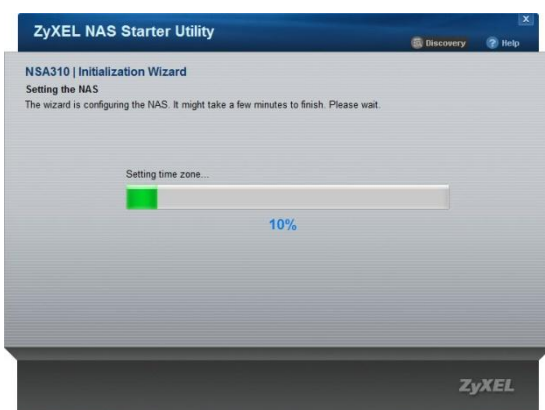


**Figure 10.** Change the password.

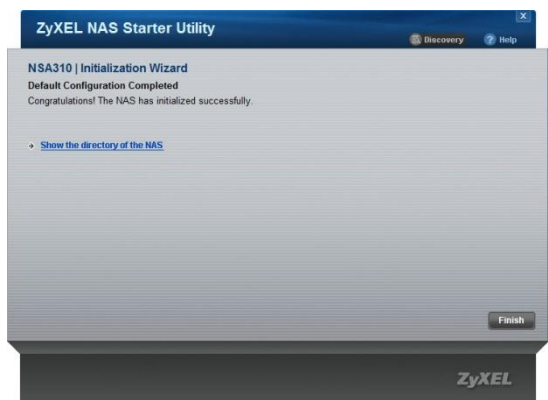
Check if the settings are correct and click **Next** to begin configuring NSA310.



**Figure 11.** Confirm settings.



**Figure 12.** NAS is under setting.



**Figure 13.** Configuration is finished.

### 1.3 Network Setting

After successful initialization, go back to the NSU main menu and click **Configure network setting** to start configuring. You can assign a new hostname of this NSA310 and configure an IP for NSA310.

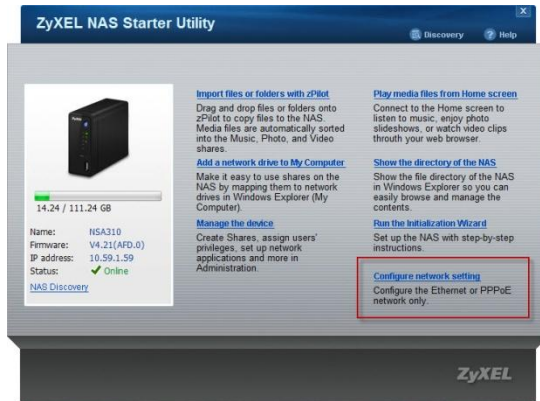


Figure 14. NSU main menu.

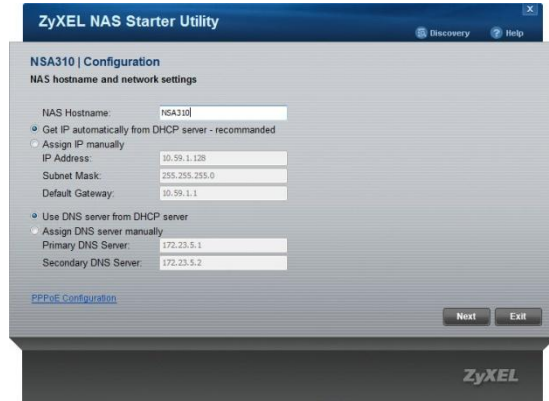


Figure 15. Configure an IP for NSA310.

### 1.4 zPilot

Click **Import files or folders with zPilot** to launch zPilot. When you would like to upload files to NSA310, just drag files onto zPilot icon. The files will be automatically uploaded and sorted based on their types: Music, Photo and Video. The files which are not the categorized in Music, Photo or Video will be uploaded to the Public folder.

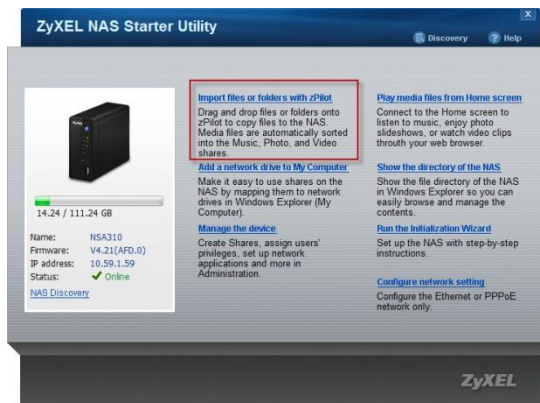


Figure 15. NSU main menu.

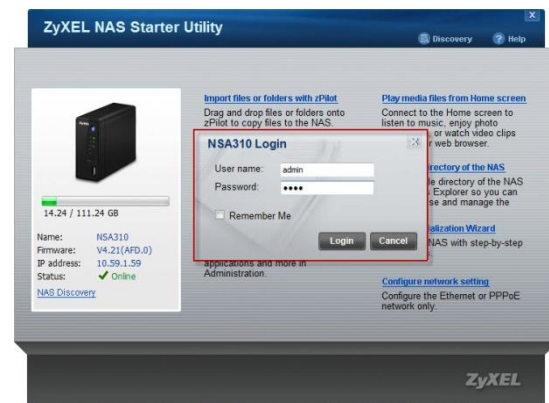
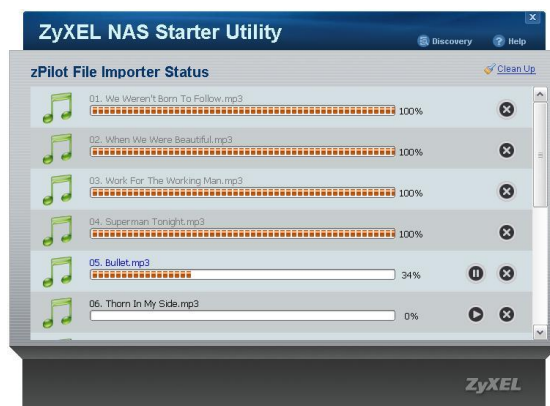


Figure 16. Enter the username and password to login.



Figure 17. zPilot icon

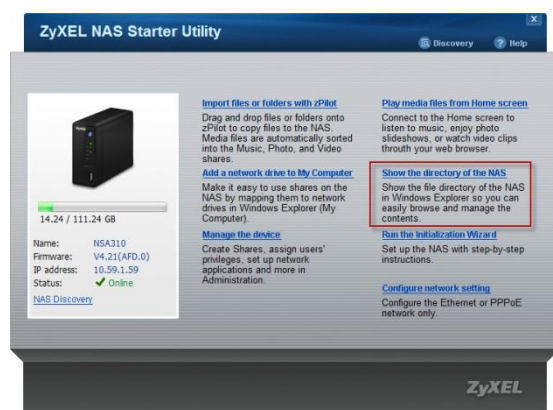
When users double click on the zPilot icon, the detail status of zPilot will be shown as follows. Click **Clean Up** to clear finished tasks.



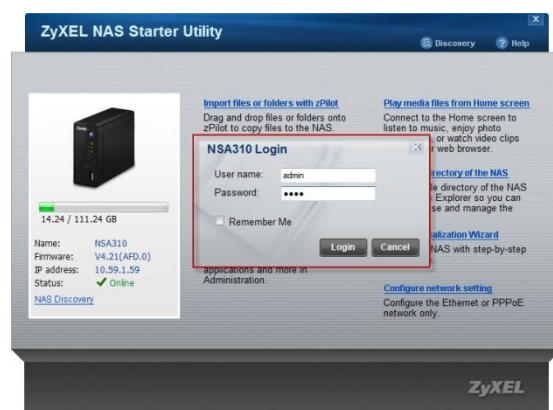
**Figure 18.** The zPilot is transferring files to NSA310.

## 1.5 Directory

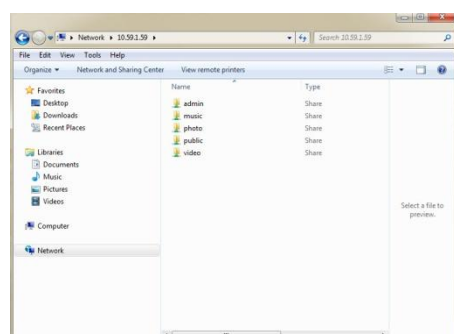
Click **Show the directory of the NAS** and enter your username and password. Then the directory of NSA310 will pop up. You will see the files you uploaded through zPilot are automatically categorized by their types.



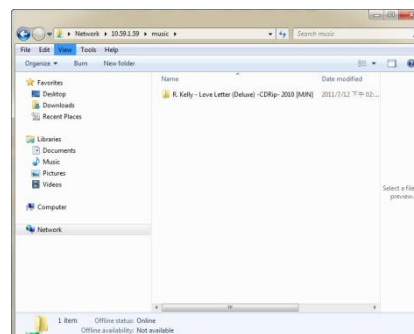
**Figure 19.** NSU main menu.



**Figure 20.** Enter the username and password to login.



**Figure 20.** Directory of NSA310.



**Figure 21.** You can check the files which you uploaded to NSA310 through zPilot before.



## 1.6 Device Management

Click **Manage the device** and enter admin's username and password to access NSA310's GUI. Then the administrator can manage the device and change the configurations.



Figure 19. NSU main menu.

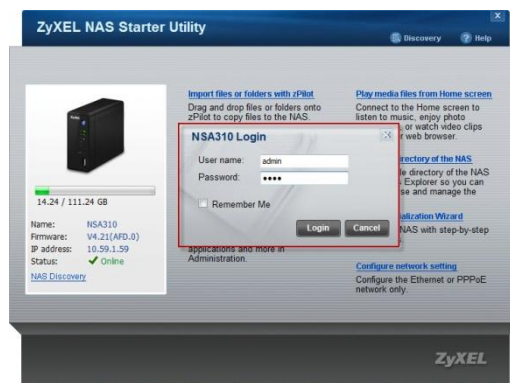


Figure 20. Enter admin's username and password to login GUI.

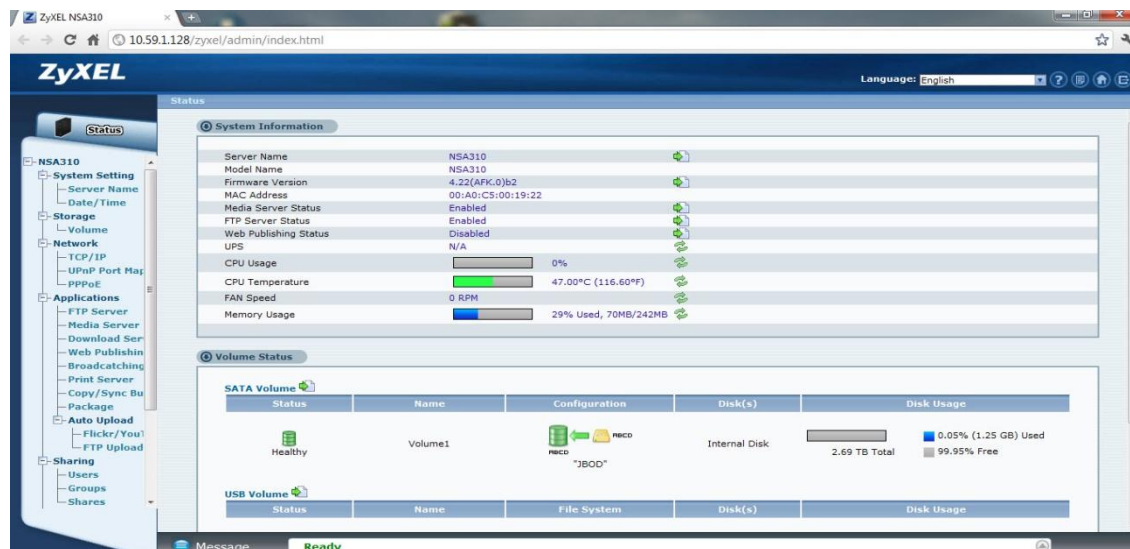


Figure 21. NSA310's GUI.



## 1.7 Play Media Files from Home Screen

Click **Play media files from home screen** to enjoy the music, video, and photos through the web browser.

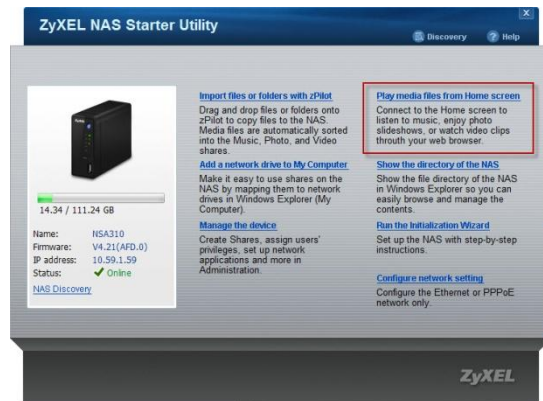


Figure 22. NSU main menu.

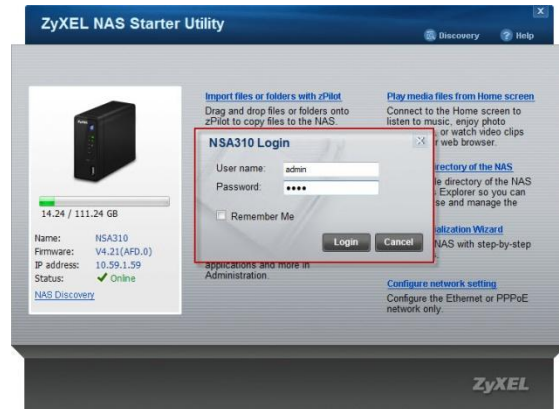


Figure 23. Enter the username and password.  
The username can be admin or other regular users.

The Home screen displays. You can click on the icon to listen to the music, watch the movies or enjoy the photos stored in the NSA310.

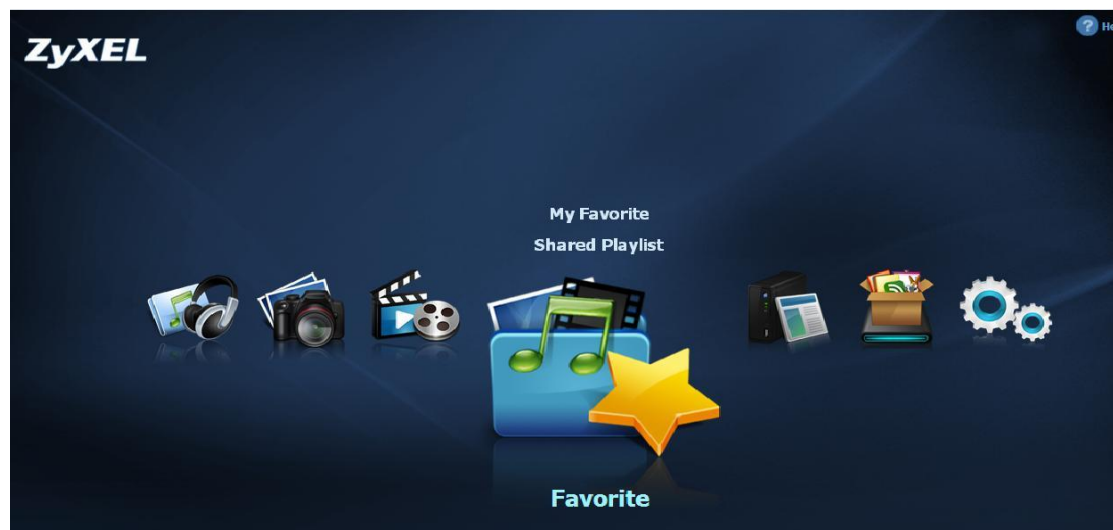


Figure 24. NSA310 Home Screen.

You can select one category in the list to play the music.

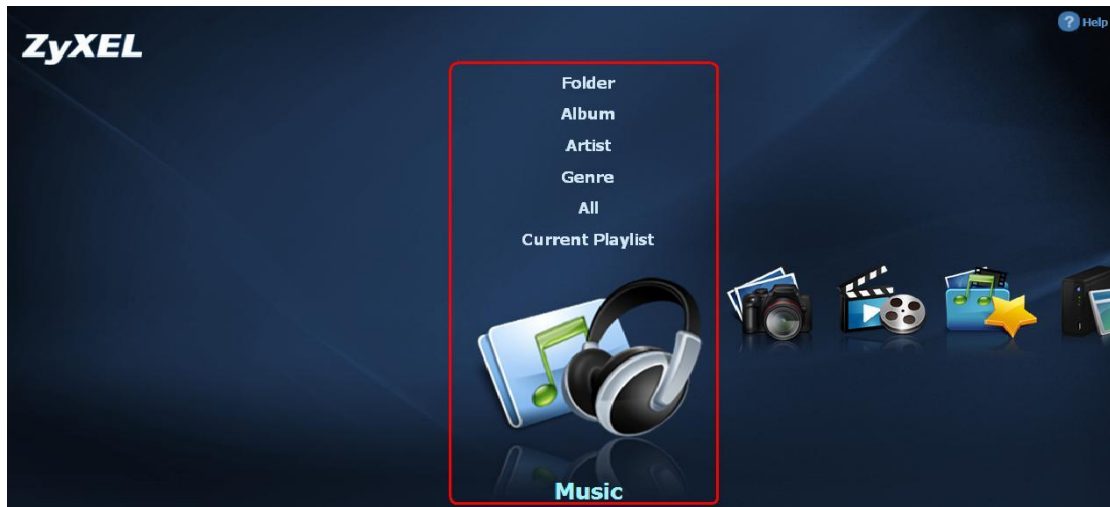


Figure 25. Play the music by selecting the category.

Just click on the song to start playing the music.



Figure 26. Music Folder.

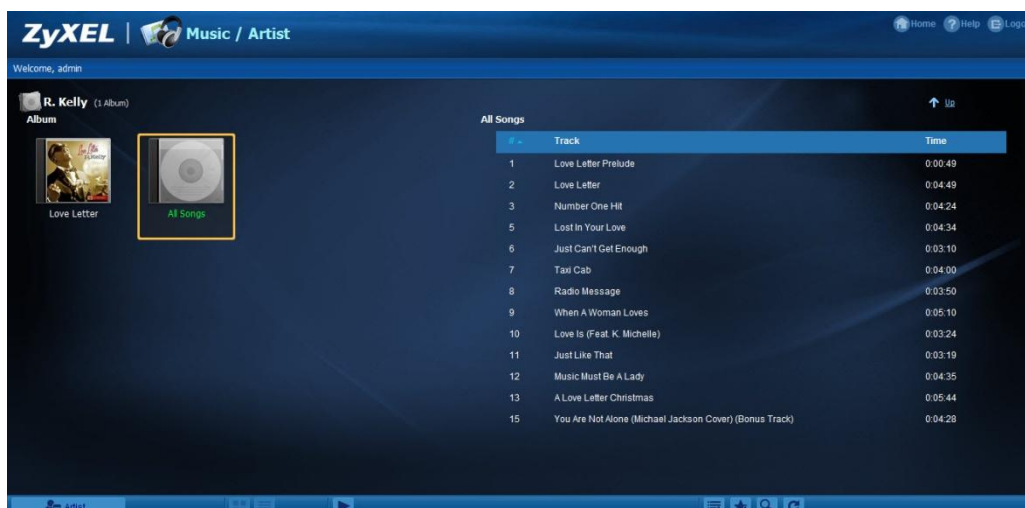


Figure 27. Music List.

If you find that the media files can't display correctly, please check the status in Applications > Media Server, or click "Rebuild Database". Usually, you will some time to see the photos displayed.

## 2. Auto Upload Service

ZyXEL NSA310 provides users to automatically upload their pictures to Flickr website (<http://www.Flickr.com>) and video files to You Tube website (<http://www.youtube.com>). Additionally, automatically FTP uploading is supported in NSA310. To use this feature, you need to download the same package as NSA210's.

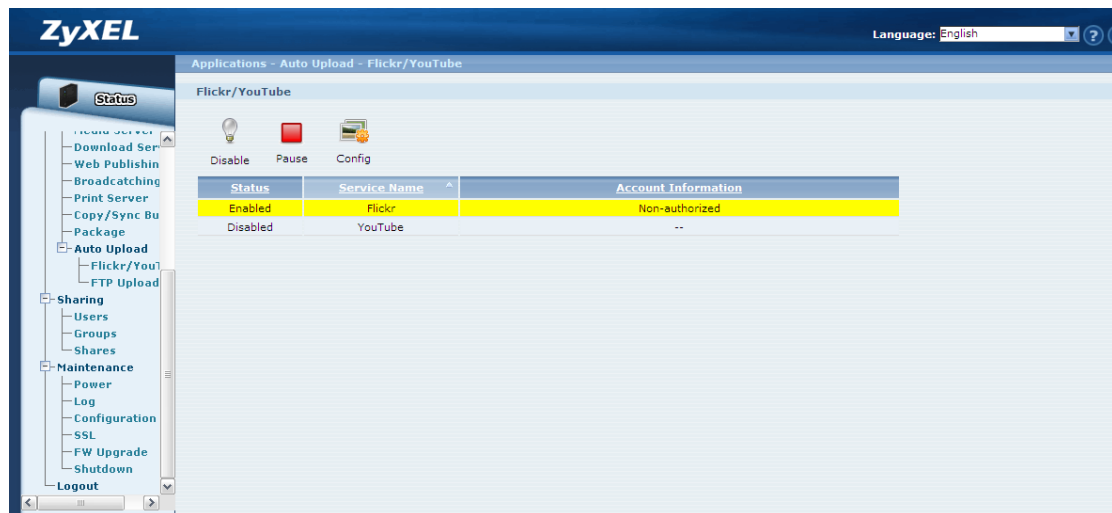
### 2.1 Auto-upload pictures to Flickr

For sharing pictures in Flickr website (<http://www.Flickr.com>), NSA310 supports automatically uploading pictures in given folder in NSA310.

#### Configuration Procedure:

- Enable auto-upload in Flickr service.
- Configure the account Flickr account information.
- Link your NSA310 with your Flickr account.
- Specify the folders which you want NSA310 to automatically upload your pictures.
- Specify the grace period and other options in auto upload function.
- Move pictures to the folders you specify in previous step.
- Check the result in Flickr website.
- Check the system log in NSA310.

First, log into the web GUI page in NSA310, go to Auto Upload >Flickr/YouTube. Then, enable Flickr service as following figure. After enabling the Flickr service, you will see two more icons in the same page.

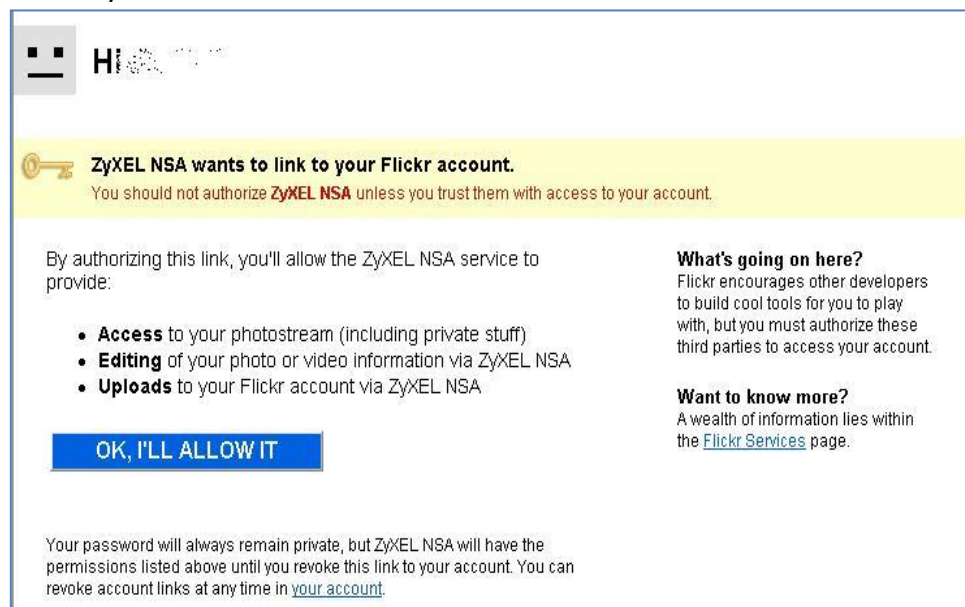


**Figure 28.** Enable Flickr service.

Press “config” icon to set more detail configuration. There will be several system notification to warn that you are going to link to Flickr website. In the meanwhile, please make sure you have Flickr account information.

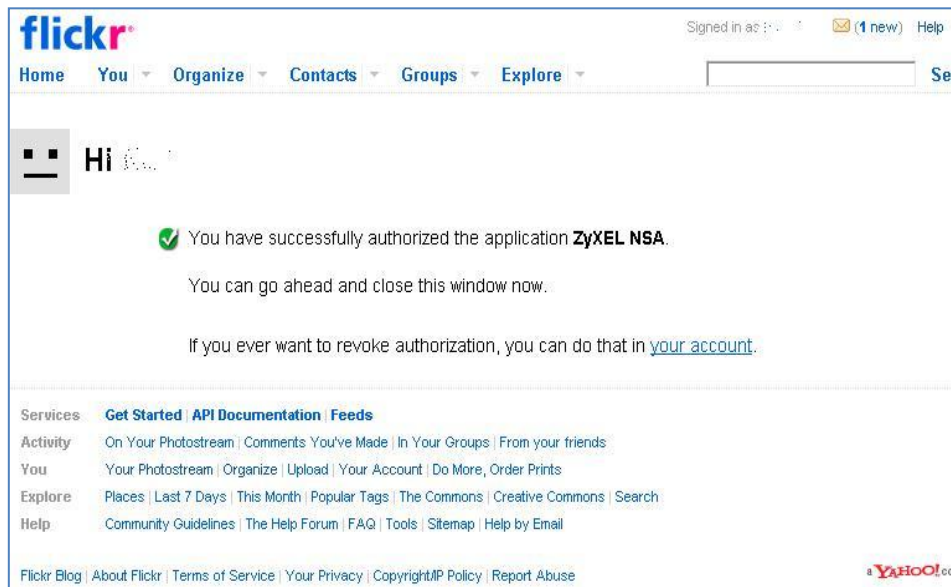
After configuring the account information, system will warn you that the connection to Flickr.

In the following popup browser, you need to authorize the connection between your account and your NSA310.



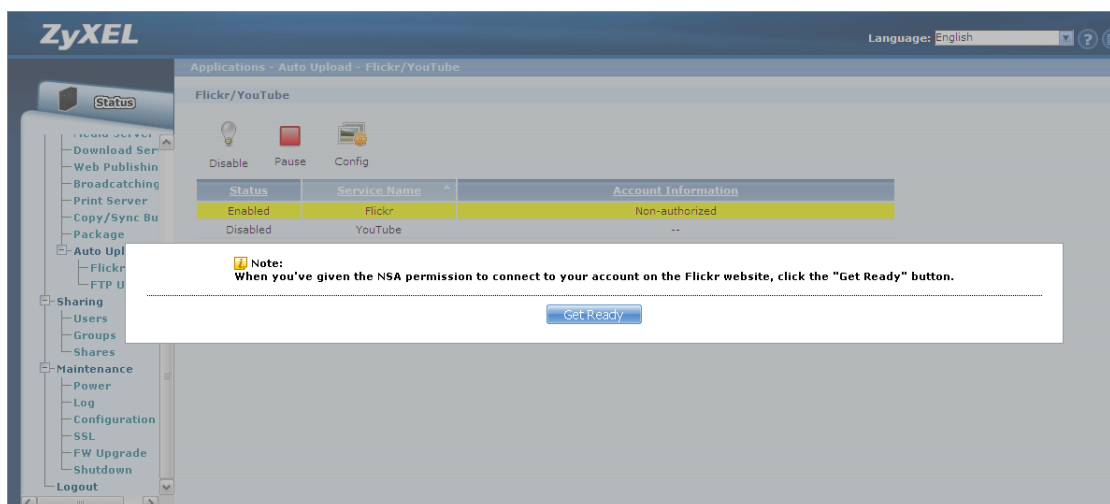
**Figure 29.** Authorization between your account and NSA310.

The following figure shows that you agree this link after press “OK” button.



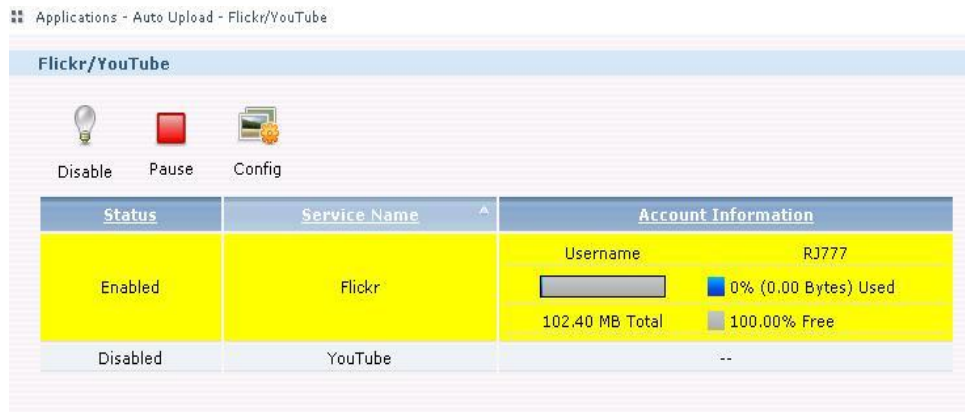
**Figure 30. Successful Authorization.**

After allowing the agreement in Flickr page, please also press the “Get ready” button in NSA310.



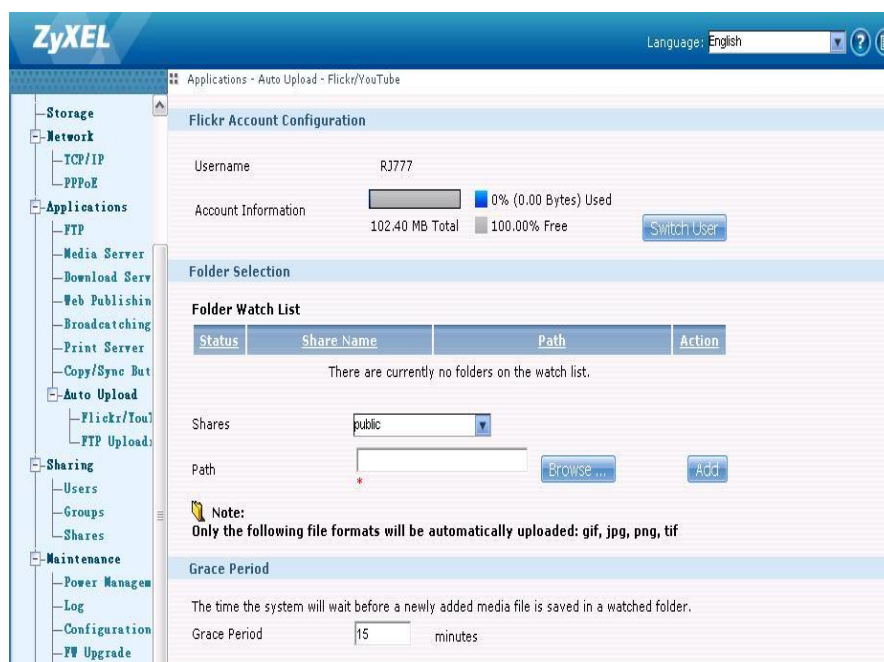
**Figure 31. Press “Get Ready”.**

You also can check the service status in NSA310 under Auto Upload > Flickr/YouTube. In this case, we can see the storage status in your Flickr account.



**Figure 32.** Monitor the service status.

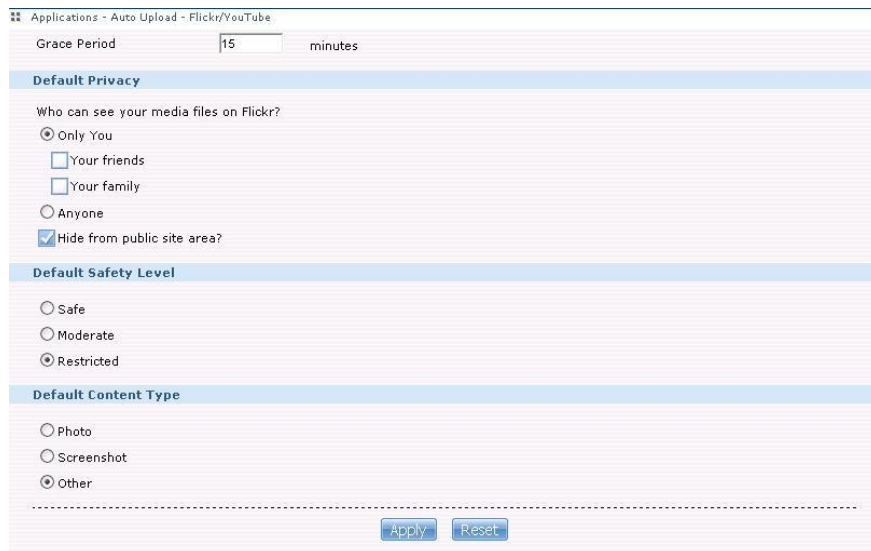
Afterwards, users need to set which folder(s) in your NSA310 will be monitored and uploaded to Flickr website. In this example, we are going to set folder named as “2009\_SpaceTraveling” under public folder to be monitored and uploaded all the pictures to Flickr website.



**Figure 33.** Configure “Grace Period” in the GUI.

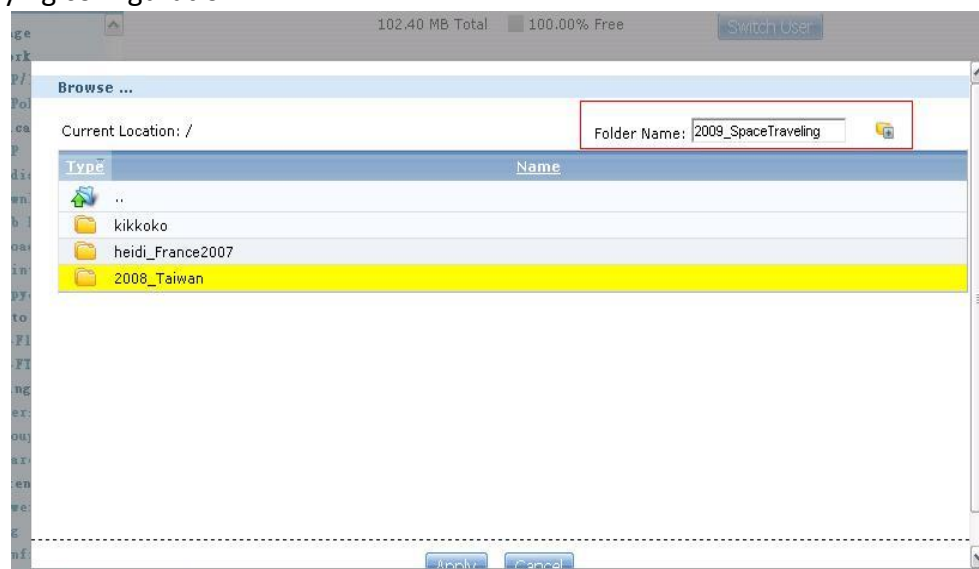
In this example, we configure the grace period as two minutes. This means that NSA310 will upload any new added pictures in the folder you specify after 15 minutes since you press apply button.





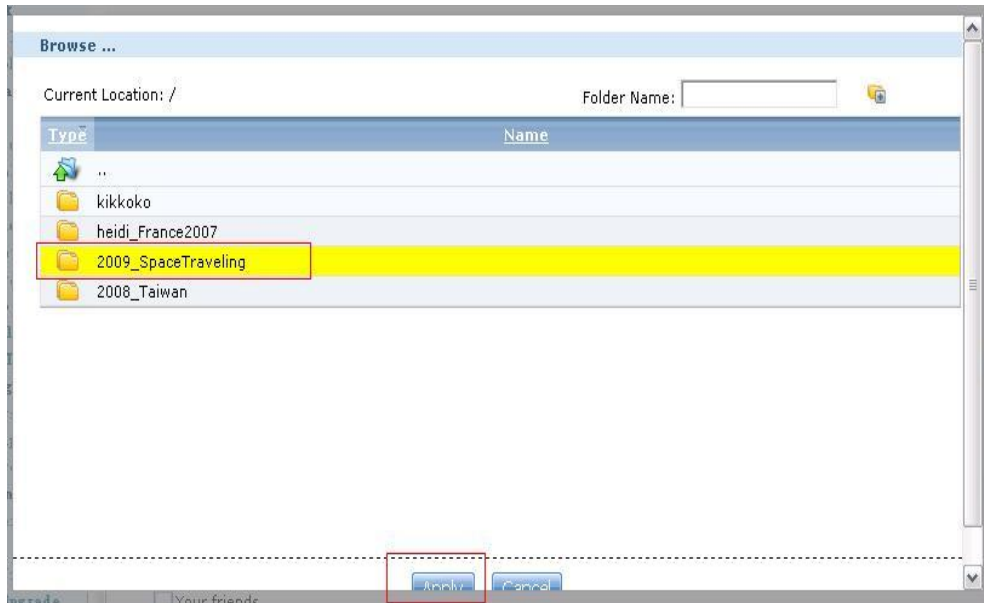
**Figure 34.** Configure “Grace Period” in the GUI.

Please specify the given folder that NSA310 will watch and upload the pictures after applying configuration.



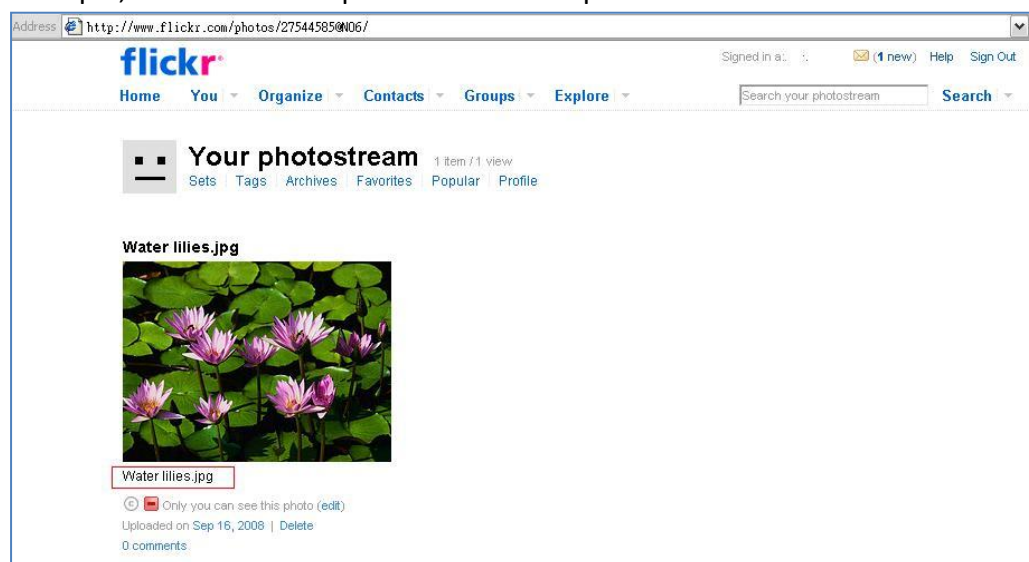
**Figure 35.** Specify the folder.

Please remember to press “APPLY” button after specifying the given folder. NSA310 will monitor any need added pictures in the folder you assigned after you press apply button.



**Figure 36.** Press “Apply” after specifying the folder.

After 15 minutes, NSA310 will upload new added photos to Flickr website. In this example, we can see one picture has been uploaded to Flickr website.



**Figure 37.** Uploaded photo.

### 3. Package Management

Package management is used to set up more useful applications in NSA310. This feature enables user to use the following applications: BackupPlanner, DyDNS, Gallery, NFS, PHP-MySQL-phpMyAdmin, SMART, SqueezeCenter, Wordpress and eMule.

Firstly, click **Applications > Package Management** to display the screen. Then the applications are listed as below.

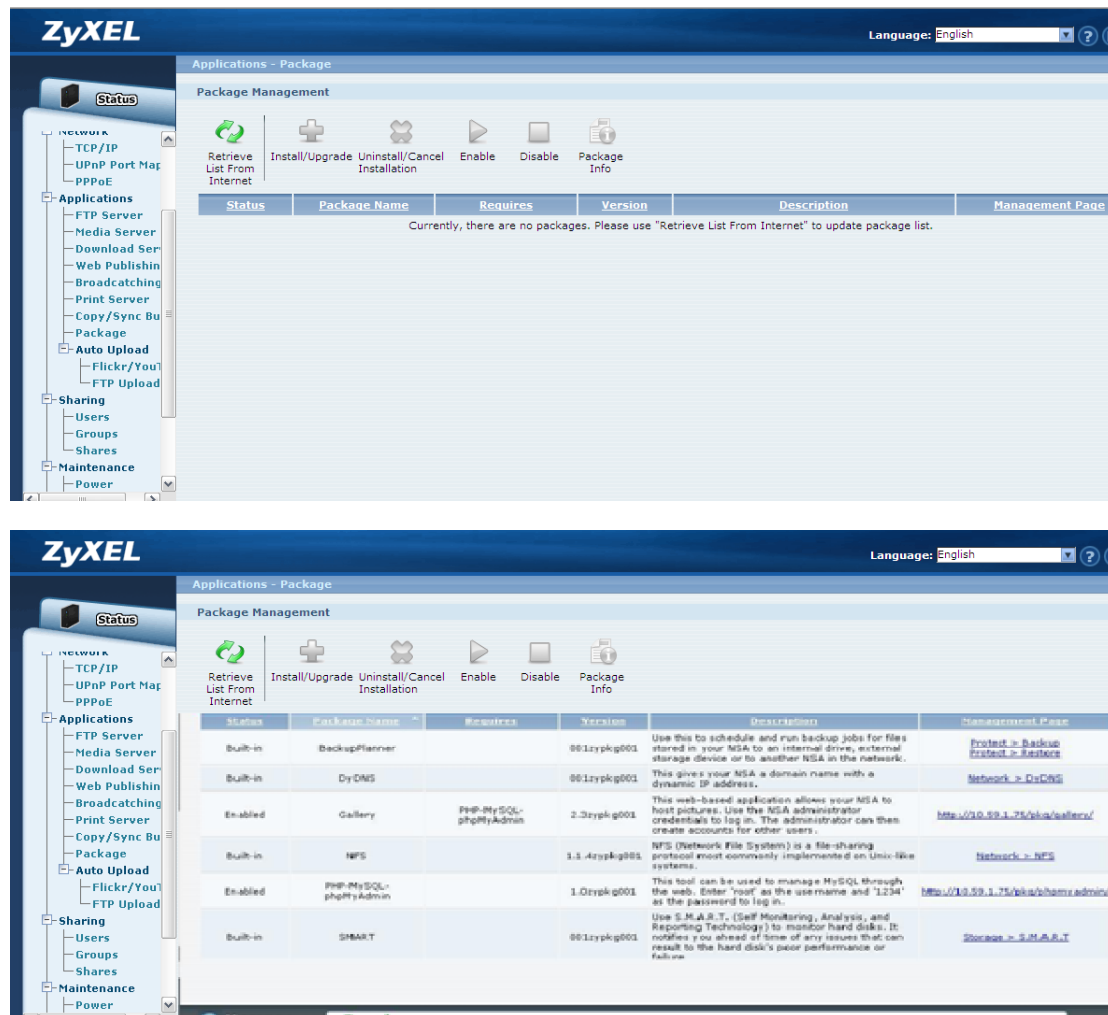
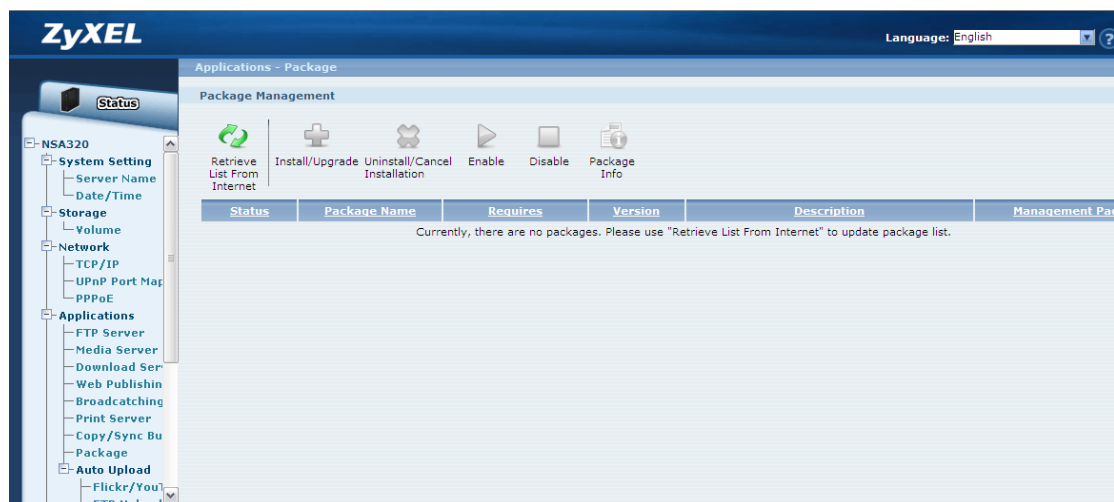


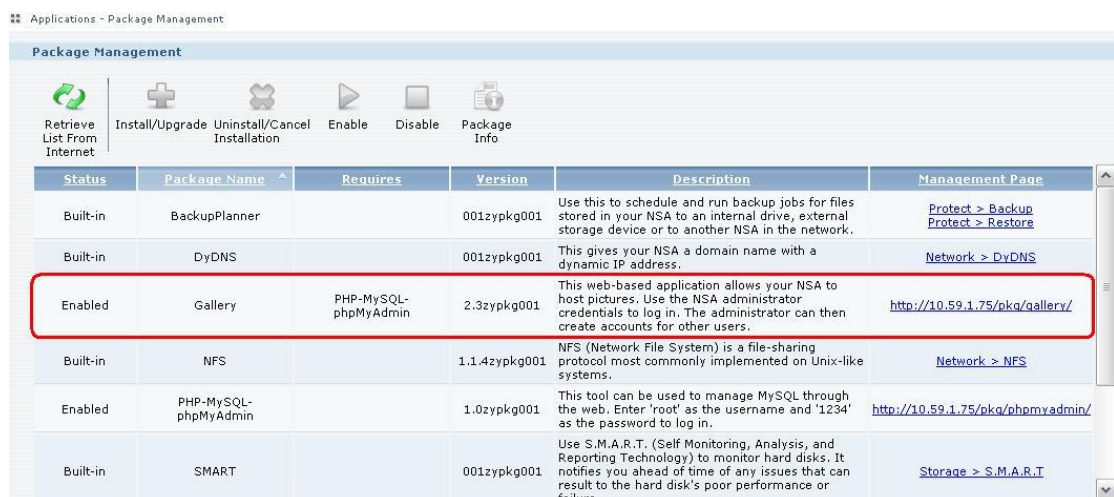
Figure 38. Applications > Package Management

After you finished install an application and enable it, additional links display in the navigation panel. For example, you can see SMART, DyDNS, NFS and eMule.



**Figure 39.** Original navigation panel before applications installed.

For Gallery, PHP-MySQL-phpMyAdmin, SqueezeCenter and Wordpress, you can access the applications' web configurators through the Package Management screen or enter the IP address shown in the GUI in your web browser.



### 3. 3.1 Gallery

Gallery is a web-based application that allows NSA310 to host photos. You can upload photos in the local computers or stored in NSA310. Use the administrator account of NSA310 to log in to the Gallery GUI.

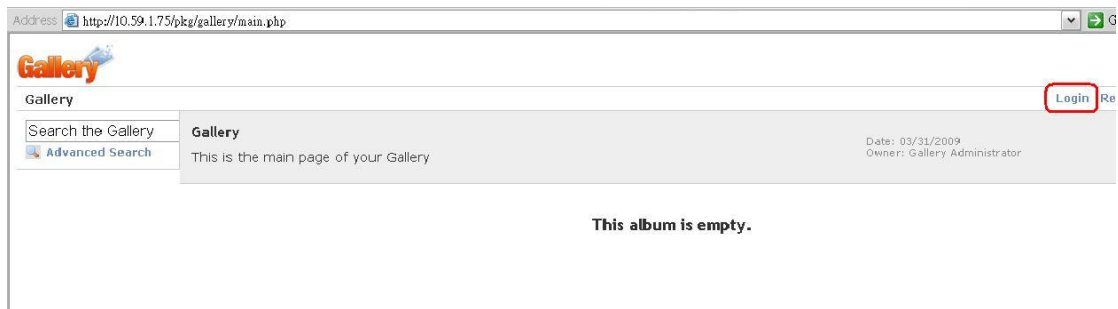


Figure 41. Enter Gallery GUI.

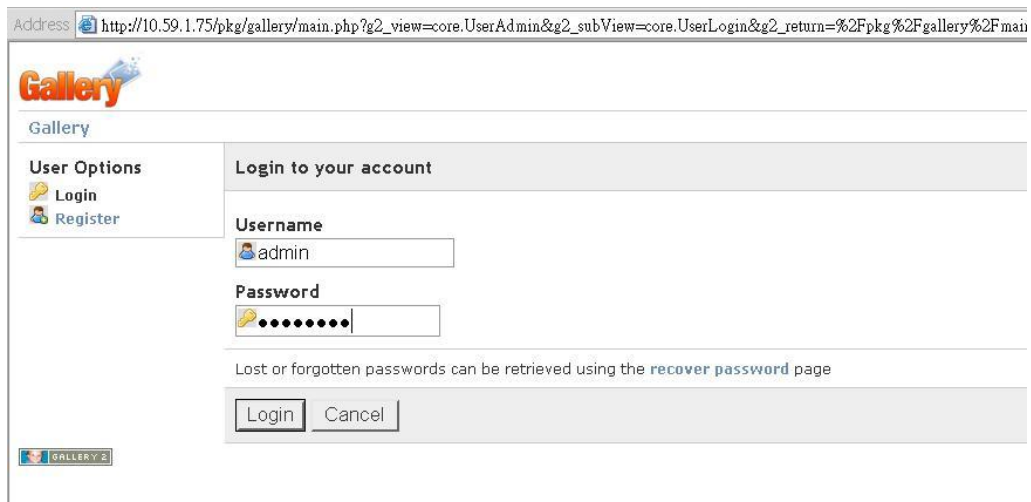


Figure 42. Use Admin account to log in.

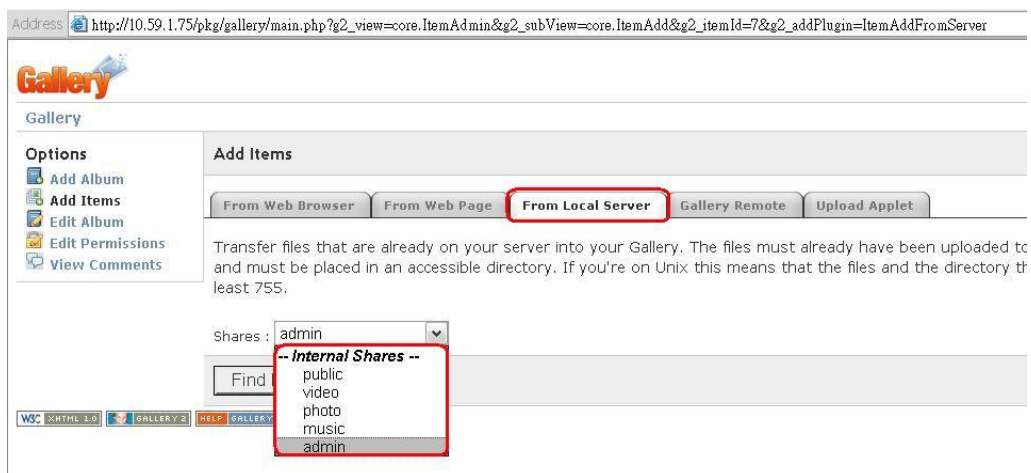


Figure 43. Upload photos from NSA310.

Edit Album  
Edit Permissions  
View Comments

Transfer files that are already on your server into your Gallery. The files must already h and must be placed in an accessible directory. If you're on Unix this means that the file least 755.

Directory: /photo

	File name	Type	Size	Use Symlink
<input checked="" type="checkbox"/>	IMG_0063.JPG	Photo	5961162 bytes	<input type="checkbox"/>
<input checked="" type="checkbox"/>	IMG_0066.JPG	Photo	5904765 bytes	<input type="checkbox"/>
<input checked="" type="checkbox"/>	IMG_0069.JPG	Photo	5919973 bytes	<input type="checkbox"/>
<input type="checkbox"/>	IMG_0086.JPG	Photo	5737059 bytes	<input type="checkbox"/>
<input type="checkbox"/>	IMG_0087.JPG	Photo	6099382 bytes	<input type="checkbox"/>
<input type="checkbox"/>	(Un)check all known types	(Un)check symlinks for selected items		<input type="checkbox"/>

Copy base filenames to:  
☒ Title ☐ Summary ☐ Description

**Thumbnails**  
Gallery can create thumbnails at upload time, or create them the first time you want to thumbnail once and save it, but if you create them at upload time it makes viewing albu upload time.

☒ Create thumbnails now

Add Files
Start Over

**Figure 44.** Add selected files.

Then you can view the uploaded photos and edit photos in the screen.

Address <http://10.59.1.75/pkg/gallery/main.php>

Site Admin Your Account

Search the Gallery  
Advanced Search

Add Album  
Add Comment  
Add Items  
Delete Items  
Edit Album  
Edit Captions  
Edit Permissions  
Rearrange Items  
View Latest Comments  
View Slideshow

**Gallery**  
This is the main page of your Gallery

Date: 03/31/2009  
Owner: Gallery Administrator  
Size: 2 items

Item actions

**IMG\_0063**  
Date: 08/04/2009

Item actions

**IMG\_0066**  
Date: 08/04/2009  
Views: 1

Page: 1

**Figure 45.** Uploaded photos.



## 1. What is RAID?

RAID stands for **R**edundant **A**rray of **I**nexpensive **D**isks. It takes two or more hard disks to achieve greater levels of performance, reliability and/or larger volume of data size.

## 2. What kind of RAID is supported in NSA310?

NSA310 supports Raid 1, JBOD, or RAID0.

## 3. What is the file system supported in NSA310?

Internal file system: XFS or EXT4.

External file system: FAT32, FAT16, EXT2, EXT3 and Reiser FS.

## 4. Which kind of the multimedia server does NSA310 support?

NSA310 supports Squeeze Center, DLNA server, UPnP AV Server, iTunes Server.

## 5. Does NSA310 support DLNA media server?

Yes. NSA310 supports DLNA 1.5 compliant media server.

## 6. Which kinds of video file format are supported by NSA310?

NSA310 supports the following video formats: MPEG-1/MPEG-2, MPEG-4, AVI, DivX, Motion JPEG, Quick Time Video, RealMedia, Ogg, Matroska, ASF, Windows Media Video and ISO. Subtitle is also supported by NSA310.

## 7. Which kinds of audio file format are supported by NSA310?

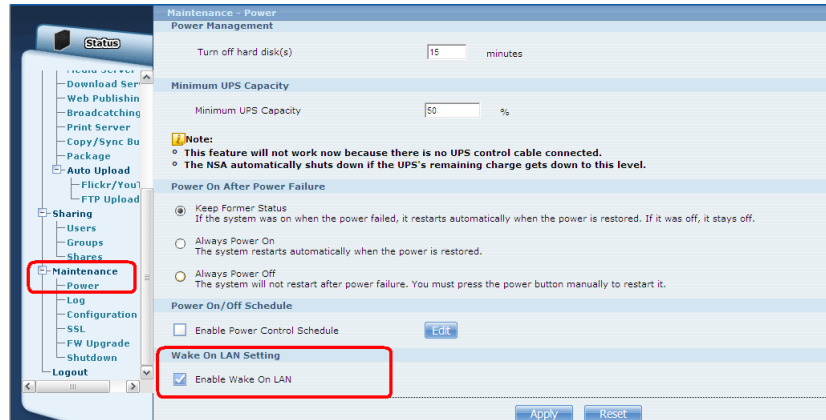
NSA310 supports the following audio formats: MP3, Ogg Vorbis, RealMedia, WAVE, Windows Media Audio, Matroska, Monkeys Audio, MP1, MP4, PCM, LPCM, DTS, AC3, Free Lossless Audio Codec, Au, AAC, 3GPP, AIFF, RIFF-based MIDI and Playlist.

## 8. Which kinds of image file format are supported by NSA310?

NSA310 supports bitmap, JPEG and PNG.

## 9. What is the feature “Wake On LAN”?

You can turn on the NSA310 through its wired Ethernet connection after enabling Wake On LAN. To use Wake On LAN from a computer on your LAN, install a program such as Wake On LAN EX or other Wake On LAN programs that support sending magic packets. You can also use Wake On LAN from a remote location if the router in front of the NSA310 supports sending magic packets.



## 10. Which kinds of web browsers are supported by NSA310?

NSA310 supports Internet Explorer 6.0 and later versions, and Firefox 2.00 and later versions. Currently, NSA310 cannot support Safari now.