

**NOTE:** Before every use, empty and flush the mixing hose and water tank to prevent stagnant water from being mixed.

SUITABLE FOR OUTDOOR USE & HOUSEHOLD USE ONLY

**WARNING**  
TO REDUCE THE RISK OF FIRE, ELECTRIC SHOCK, OR INJURY, READ ALL THESE INSTRUCTIONS BEFORE USE.

- [illegible]

- **INGESTION HAZARD:** This product contains a button cell or coin battery.
- **DEATH** or serious injury can occur if ingested.



Caution: Any changes or modifications to this plan have not been approved by the party responsible for doing so and could void the plan's authority to execute the transaction.

IC START:

1. This does not mean that we have been successful in our investigation. It only means that we have not yet found a solution.
2. It is also possible that we have not yet found a solution because we have not yet found a solution.

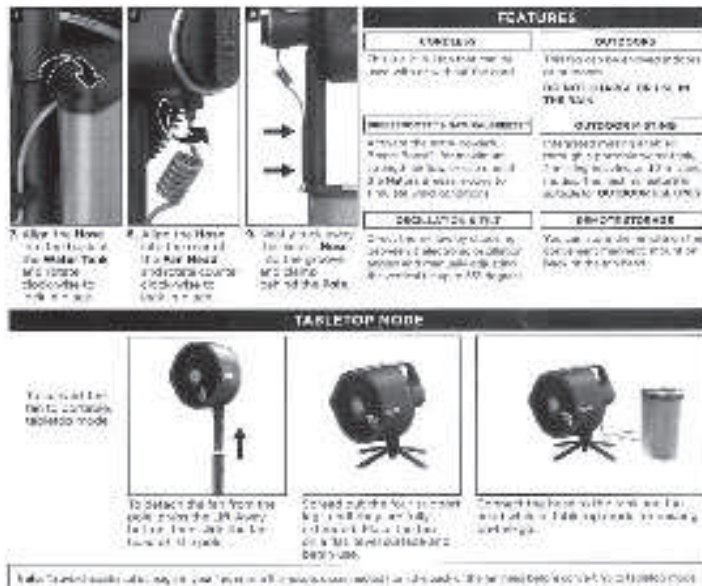
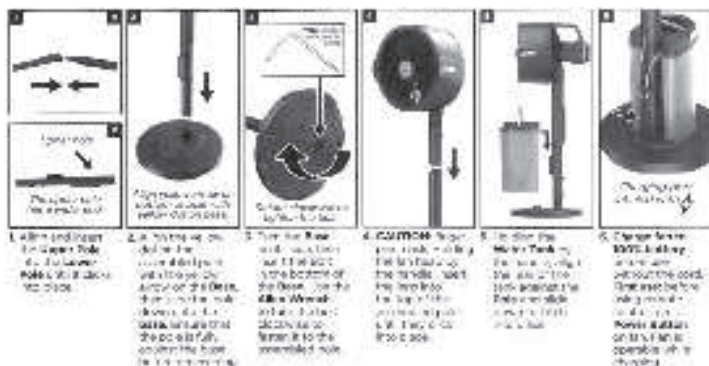
**READ AND SAVE THESE INSTRUCTIONS**



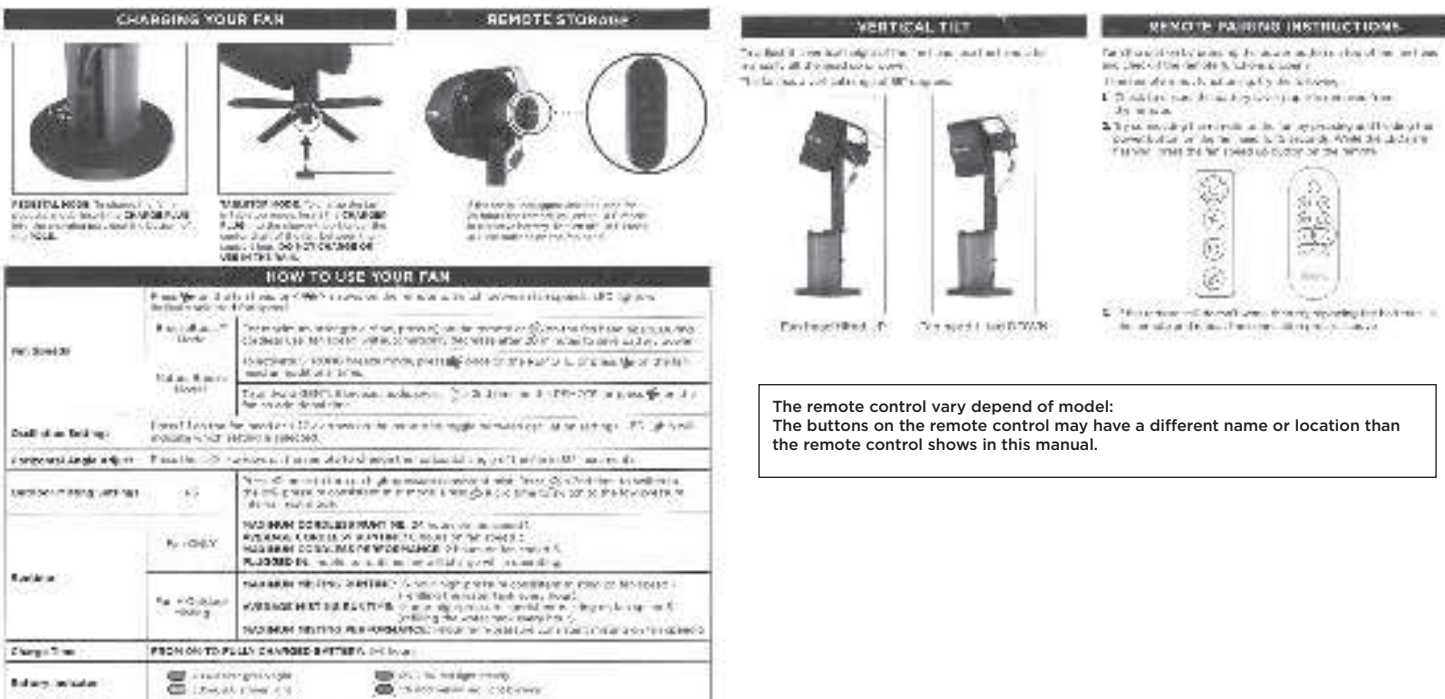
# ASSEMBLING YOUR FAN

INCLUDES: • All of the parts • 1 x Fan Head • 1 x Motor Unit • 1 x Base • 1 x Tabletop Node • 1 x Charging Cable • 1 x Remote Control

NOTE: Accessories may vary depending on the model.



The images shown here are for illustrative purposes only and may be subject to change.



The remote control vary depend of model:  
The buttons on the remote control may have a different name or location than the remote control shows in this manual.



8 1 4 1 0 0 5 3 7

PRINTED IN MEXICO / Elbrd: A.M. SC: 07-31-2025\_2P  
SHNMDL: FA302\_B / ADD: FA302C\_FA302QDV\_FA302QGN /  
OBPN: FA302\_QSG\_MP\_MV12\_241108