

F I S H E R & P A Y K E L

REFRIGERATOR FREEZER

RB36S25MKIW 1 FP US

PRODUCT CODE: 25281-A

PARTS MANUAL

US

INTRODUCTION

BRAND	VOLTAGE	MODEL	PRODUCT CODE
Fisher & Paykel	110-120 60Hz	RB36S25MKIW 1 FP US	25281-A

MODELS

The models covered by this manual are listed on the front cover.
The information detailed in this manual is subject to change without notice. The latest version is indicated by the reprint date and replaces any earlier editions.

KIT PARTS

Where a part number is shown against the descriptions for kit components, they are also available as separate items. In addition, some parts may be supplied with these kits that are not available as separate items, and are therefore either not listed, or a part number is not shown against the part description in this manual.

PARTS LIST KEY

NI	As a part reference, indicates the part is not illustrated on the diagram.
NOT USED	As a part number, indicates the diagram part reference is not used in this manual.
NS	As a part number, indicates the part is not servicable.

US

Fisher & Paykel Appliances Inc.
695 Town Centre Drive, Suite 180
Costa Mesa
CA 92626-1902
USA

e-mail: usa.customercare@fisherpaykel.com
tel: 888 936 7872
Fax: (714) 372-7003

CA

Fisher & Paykel Appliances Canada Inc
2900 - 595 Burrard Street
Vancouver
BC, V7X 1J5
Canada

e-mail: usa.customercare@fisherpaykel.com
tel: 888 936 7872

CONTENTS

INTRODUCTION	1
DRAWER COMPONENTS & ELECTRONIC CONTROL	3
CABINET INTERIOR STORAGE COMPONENTS	5
CABINET INTERIOR MAIN TRAY COMPONENTS	7
FAN, COVERS AND EVAPORATOR ASSEMBLY	11
COMPRESSOR, CONDENSER & CONTROL MODULE	13
REAR DUCT ASSY	15
CABINET PANELS AND FITTINGS	17
INSTALLATION & MISCELLANEOUS COMPONENTS	19

Fisher & Paykel
appliances

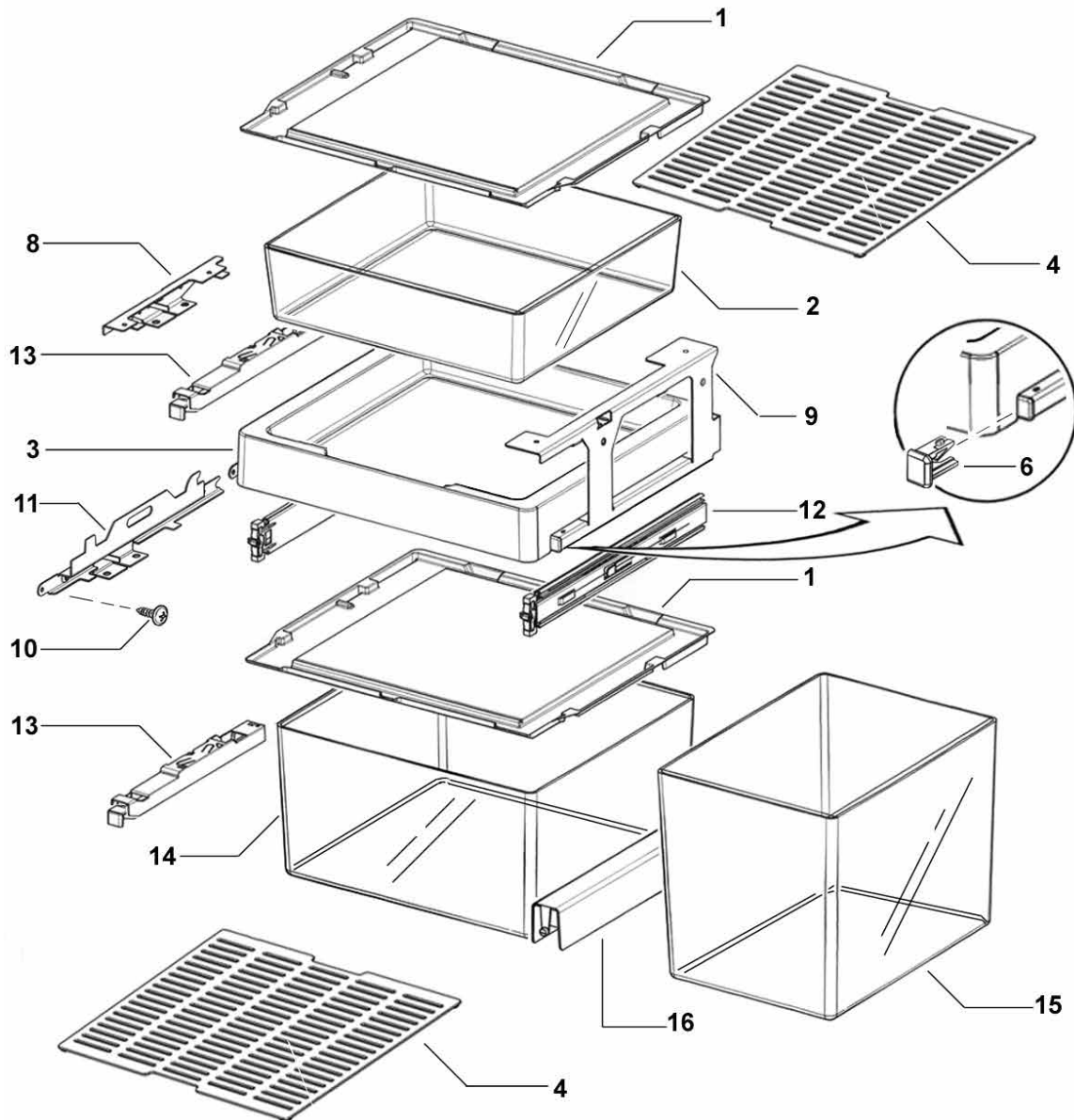
customer care



DRAWER COMPONENTS & ELECTRONIC CONTROL

REFERENCE	PART NUMBER	PART DESCRIPTION
1	840683	KIT ENDCAP UI
	Includes	ENDCAP UI BLW RH
	Includes	ENDCAP UI BLW RH
2	840684P	DOOR FOAMED 900 ASSY
	Includes	BRACKET DOOR CORNER RH (2)
	Includes	BRACKET DOOR CORNER LH (2)
	Includes	PANEL DOOR OUTER 9 640
	Includes	PANEL DOOR INNER 9 640
	Includes	HOUSING LIGHT DRAWER
3	840341	COVER DOOR CORNER RH
	840463	COVER DOOR CORNER LH
4	840511	STOP SUBTRAY DOOR
5	840843P	MODULE UI CHAM DRAW LOG ROHS
	Includes	GLASS CONTROL PANEL
	Includes	RETAINER RF MOD UI
	Includes	HARNESS SPEAKER RF MOD UI
	Includes	HARNESS RF MOD UIS
	Includes	SPRING FR MOD UI OD43
	Includes	CLIP RFI EARTH CHAM
	Includes	COVER DOOR END 9 UI
	Includes	LIGHT GUIDE RF MOD UI 21X19
8	840480	MODULE LIGHT STRIP CHAM
9	840087	DIFFUSER LIGHT DRAWER 9
10	840085P	GASKET DOOR 9 640
OPTIONAL - DOOR FRONT COMPONENTS		
11	840545	SKIN DOOR RB90S SX
	Includes 840611	HANDLE D2 866 BRUSHED
	Includes 840620	SCREW M5X30 CSK PZ ZN (2)
	Includes	ADJUSTER SKIN DOOR ASSY (3)
	Includes	SCREW TWINTHREAD 8GX19 (6)
	Includes	INSERT THREADLOCK M5 (3)
	Includes	HOOK DOOR SKIN ADJUSTER (3)
	Includes	SCREW SET M5X15 HEX (3)
12	840620P	SCREW M5X30 CSK PZ ZN (2)
13	840611P	HANDLE D2 866 BRUSHED
	Includes 840620	SCREW M5X30 CSK PZ ZN (2)
14	527679	OUTER CORNER DOOR FLAT
15	527678	CLIP CORNER FLAT DOOR

CABINET INTERIOR STORAGE COMPONENTS



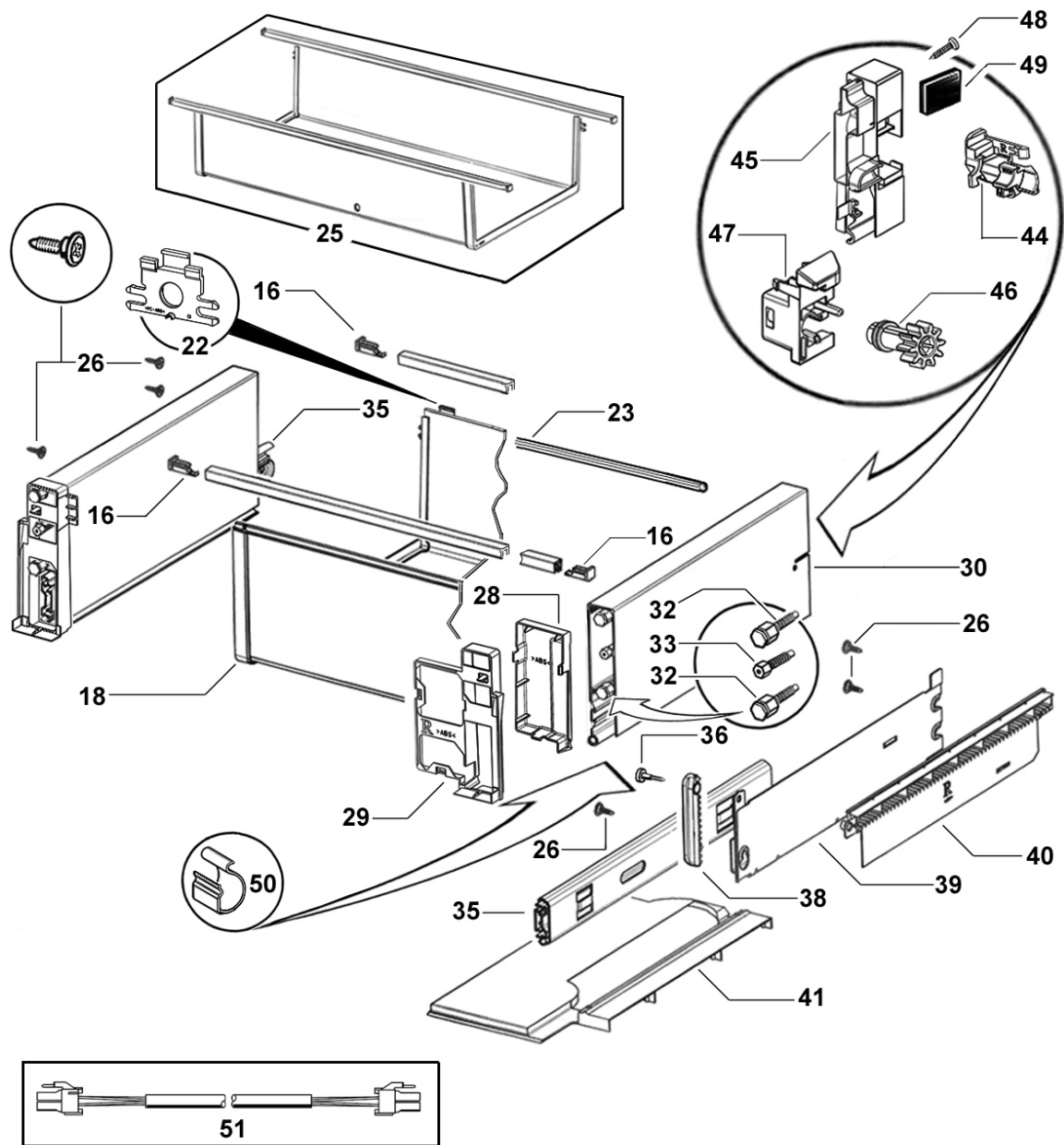
DWG001438 4 JULY 2008

DWG 001438

CABINET INTERIOR STORAGE COMPONENTS

REFERENCE	PART NUMBER	PART DESCRIPTION
1	840448	LID HUMIDIITY BIN
2	840445	BIN SMALL
3	840444	SUBTRAY
4	840401	SCREEN VEGE
6	840478	PLUG BRACKET SUBTRAY
8	840603	BRACKET HCL SUBTRAY LH WH
9	840602	BRACKET SLIDE SUBTRAY RH WH
10	840371P	SCREW 8GX16 MUSH WASHER HD (PKT 10)
11	840604	BRACKET SLIDE SUBTRAY LH WH
12	840367	SLIDE TRAY
13	840486	CONTROLLER HCL ASSY
	Includes	SLIDE OUTER HCL CTRL
	Includes	LATCH HCL CTRL
	Includes	SPRING RETURN HCL CTRL (2)
	Includes	SLIDE INNER HCL CTRL
	Includes	HOUSING HCL CTRL
14	840446	BIN MEDIUM
15	840447	BIN TALL
16	840443	DIVIDER TRAYER DRAWER

CABINET INTERIOR MAIN TRAY COMPONENTS

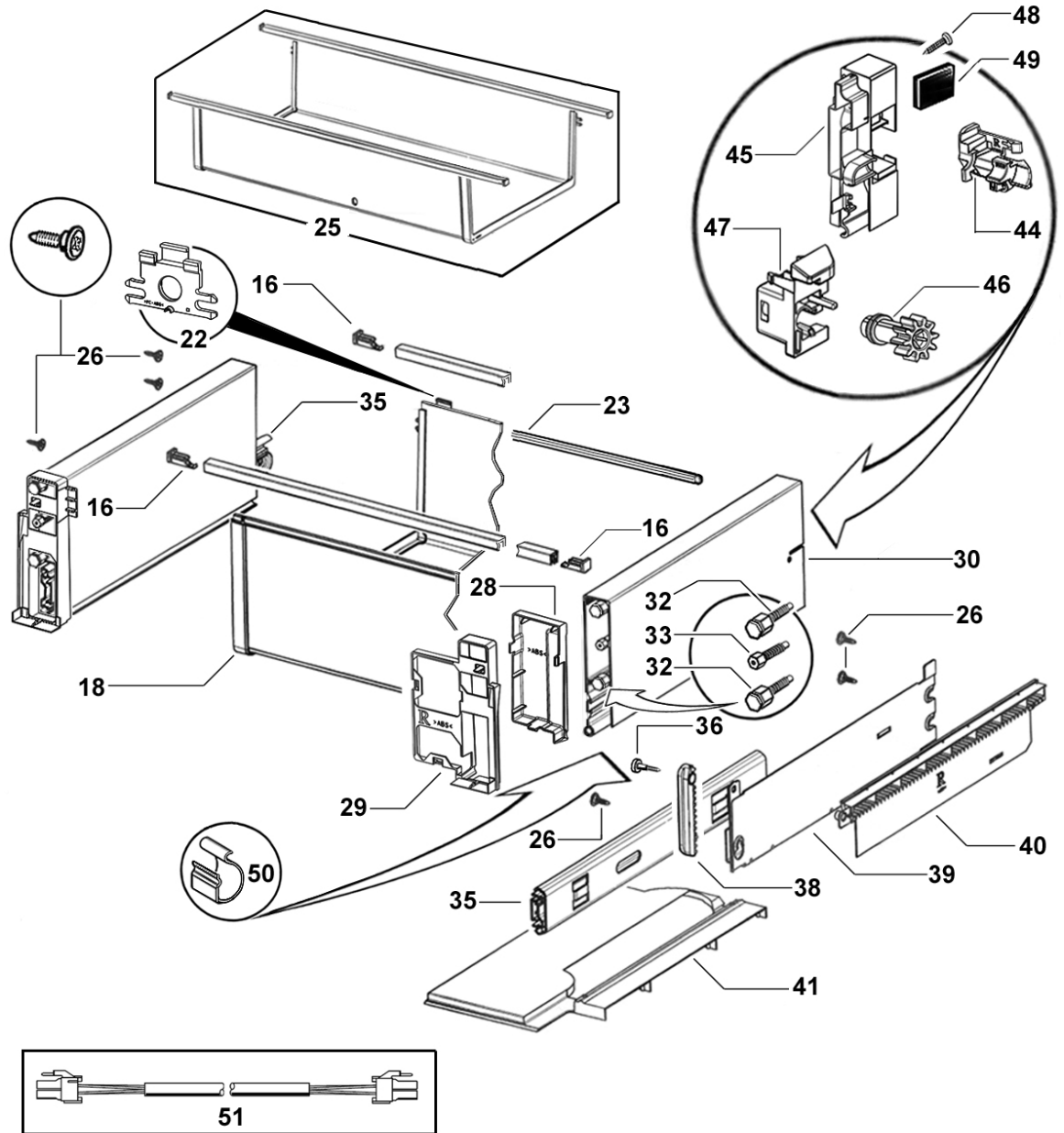


DWG001476 4 JULY 2008

CABINET INTERIOR MAIN TRAY COMPONENTS

REFERENCE	PART NUMBER	PART DESCRIPTION
16	840674	ENDPLUG TRIM TRAY
18	840464	ENDCAP TRAY DRAWER
22	840441	CLIP LOCKING TRAY
23	840435	BAR ANTI-RACK DRAWER 9
25	840677	TRAY 9 ASSEMBLY
	Includes	TRAY DRAWER 9
	Includes	TRIM TRAY DRAWER 9 (2)
	Includes 840440	ENDPLUG TRIM TRAY (4)
	Includes 840464	ENDCAP TRAY DRAWER (2)
	Includes 840441	CLIP LOCKING TRAY (2)
26	840421P	SCREW ST 8X15 PH SHOULDER ZNPL (PKT 10)
28	840373	COVER CONNECTOR DOOR
29	840374	COVER DOOR ATTACHMENT RH
	840375	COVER DOOR ATTACHMENT LH
30	821048	RAIL SLIDE LH/RH DRAWER KIT
	Includes 840384	RAIL SLIDE DRAWER RH
	Includes 840385	RAIL SLIDE DRAWER LH
32	840475	SCREW DOOR ATTACHMENT
33	840476	SCREW DOOR LOCK
35	840329	SLIDE DRAWER
36	840433P	SCREW ST 8X24 PH SHOULDER ZNPL (PKT 10)
38	840386	LEVER OVEREXTENSION RH
	840387	LEVER OVEREXTENSION LH
39	840600	BRACKET SLIDE DRAWER RH WH
	840601	BRACKET SLIDE DRAWER LH WH
40	840376	RACK DRAWER RH
	840377	RACK DRAWER LH
41	840391	GUIDE HARNESS DRAWER
44	840382	LOCK ANTI-RACK RH
	840383	LOCK ANTI-RACK LH
45	840378	CHASSIS ANTI-RACK RH
	840379	CHASSIS ANTI-RACK LH
46	840390	PINION ANTI-RACK DRAWER

CABINET INTERIOR MAIN TRAY COMPONENTS



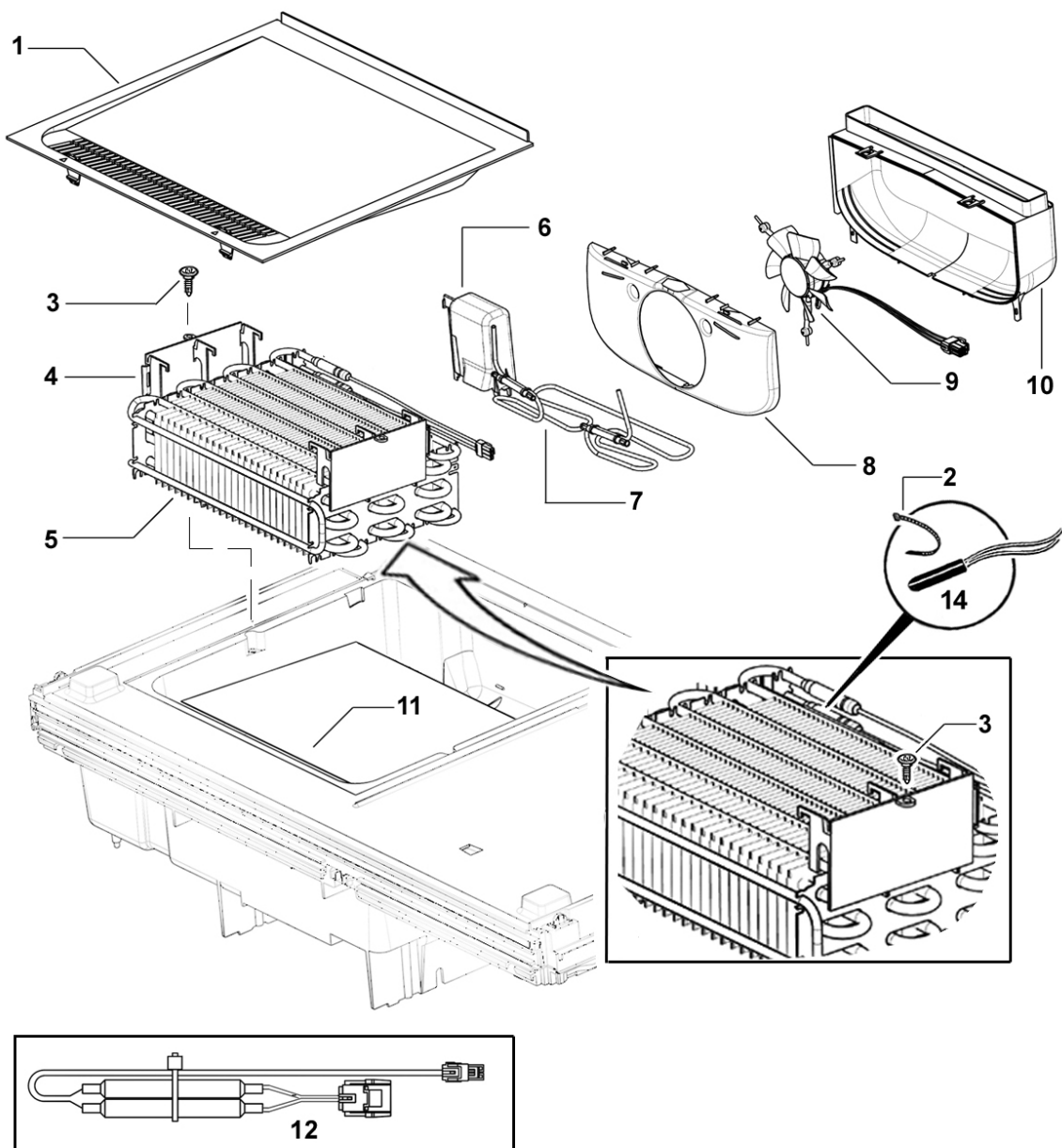
DWG001476 4 JULY 2008

CABINET INTERIOR MAIN TRAY COMPONENTS

REFERENCE	PART NUMBER	PART DESCRIPTION
47	840380	BEARING ANTI-RACK RH
	840381	BEARING ANTI-RACK LH
48	840503P	SCREW 6X25 PH PAN ZNPL (PKT 10)
49	883315	MAGNET DOOR SWITCH ST4
50	840533	CLIP HARNESS DRAWER
51	840126	CABLE SUPPLY DRAWER

FAN, COVERS AND EVAPORATOR ASSEMBLY

Fisher's Paykel
customerCARE



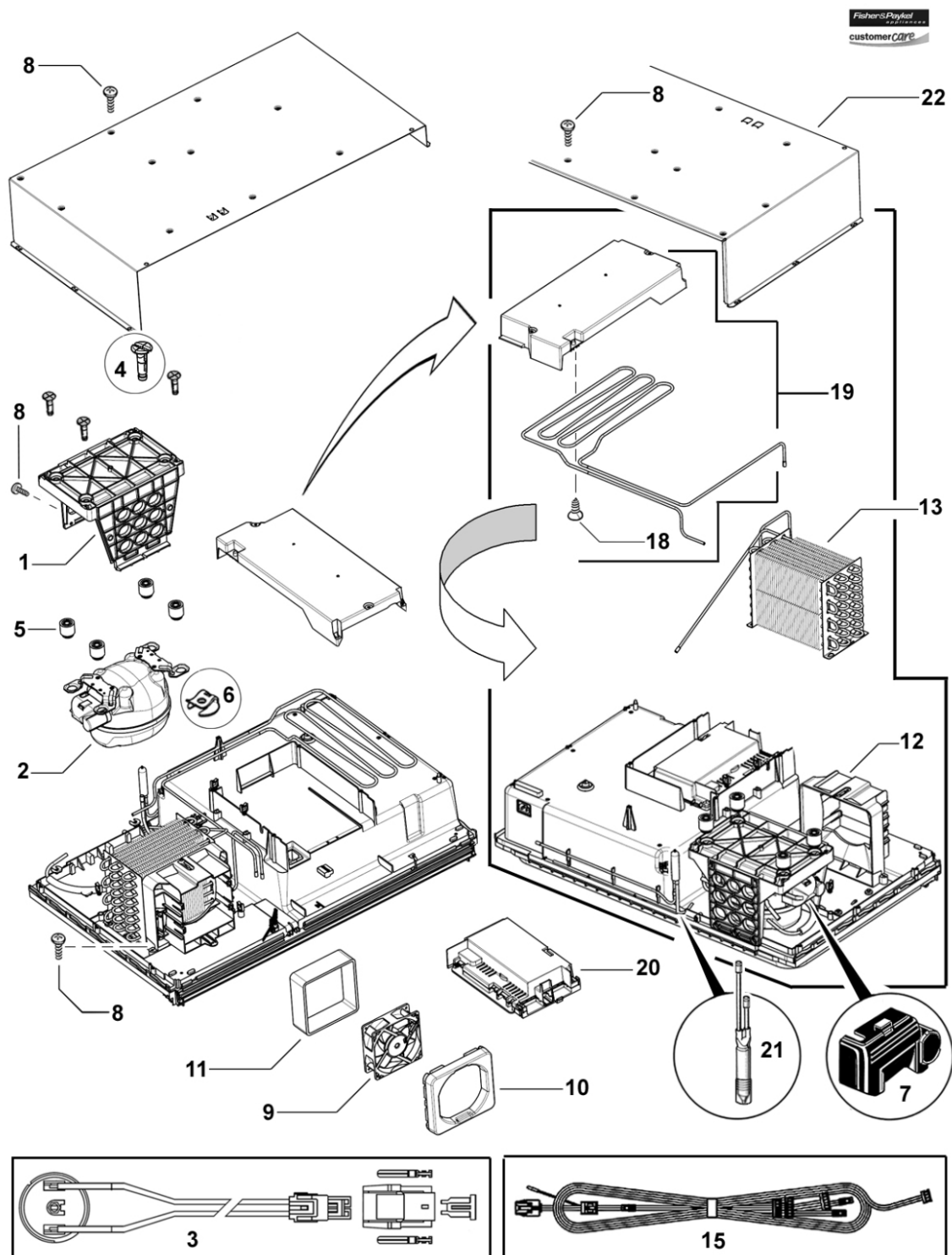
DWG001439 4 JULY 2008

DWG 001439

FAN, COVERS AND EVAPORATOR ASSEMBLY

REFERENCE	PART NUMBER	PART DESCRIPTION
1	840318	COVER EVAPORATOR 9
2	621954P	TIE T30R 150X3.5 HAMER (PKT 10)
3	840532P	SCREW ST 12X12PL PH PAN ZN TV (PKT 10)
4	840351	BRACKET EVAPORATOR
5	840361	EVAPORATOR 9 115V
	Includes	HEATER DEFROST EMBEDDED
6	840229	COVER CONNECTOR FLOOD
7	840578	HEATER DEFROST AUX 9 115V BENT
8	840344	HOUSING FAN EVAP 9 BLW
9	840357P	FAN EVAPORATOR SPARES KIT
10	840014	DUCT EVAPORATOR 9
11	840257	PANEL HEAT SHIELD
12	840517	HARNESS THERMAL FUSE 900
14	813822	THERMISTOR SENSOR KIT
	Includes	SENSOR THERMISTOR
	Includes	CONNECTOR IDC UP3 3M (2)
	Includes	INSTRUCTION SHEET

COMPRESSOR, CONDENSER & CONTROL MODULE



DWG001441 12 AUGUST 2008

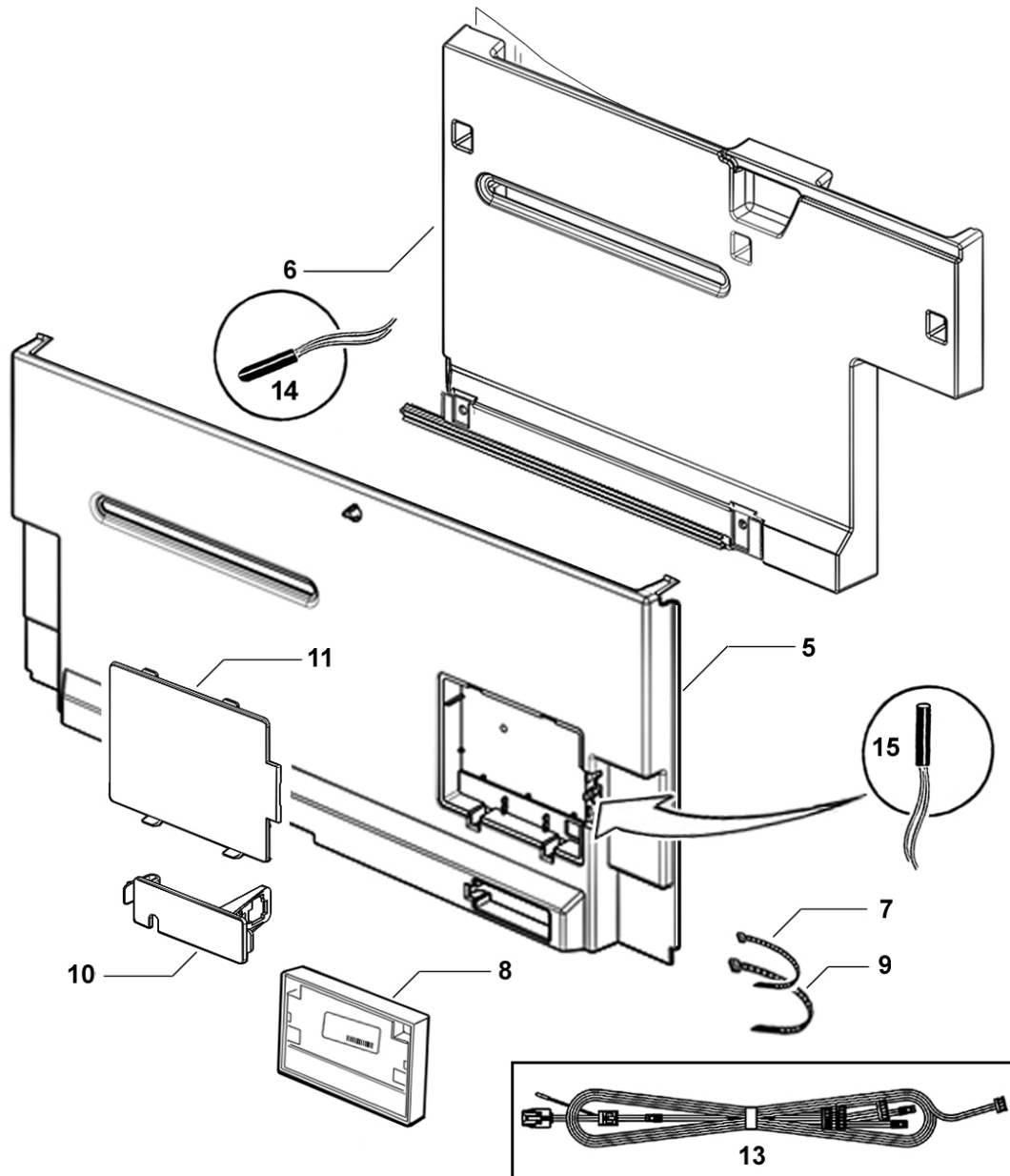
DWG 001441

COMPRESSOR, CONDENSER & CONTROL MODULE

REFERENCE	PART NUMBER	PART DESCRIPTION
1	840301	BRACKET COMPRESSOR MOUNT
2	840422P	COMPRESSOR MAT ENI57C13DGH
	Includes	COMPRESSOR MAT EN57C13DGH
	Includes 813421	PIN COMPRESSOR MOUNT 33MM (4)
	Includes 840557	GROMMET MAT 33MM GD038670 (4)
	Includes 855270	CLIP FOOT COMPRESSOR (4)
	Includes 840521	COVER OVERLOAD MAT EN57
	Includes 840530	HARNESS OVERLOAD ASSEMBLY
	Includes 881578	FILTER DRYER DUAL 4A-XH7 5GR
3	840530	HARNESS OVERLOAD ASSEMBLY
	Includes	OVERLOAD PANASONIC MM3-71CCQ
	Includes	HARNESS ASSY
	Includes	CONNECTOR JST YLP -02V-WG
	Includes	CONNECTOR JST YLS-02V
	Includes	TERMINAL JST SYF-41T-PO.5A
	Includes	RETAINER JST YLS-02V
4	813421	PIN COMPRESSOR MOUNT 33MM
5	840557	GROMMET 33MM MAT GD038670
6	855270P	CLIP FOOT COMPRESSOR (PKT 4)
7	840521	COVER OLOAD MAT ENI57
8	840532P	SCREW 12X12 PL PH PAN ZN TV (PKT 10)
9	840343P	FAN CONDENSER SPARES KIT
10	840482	SHROULD FAN CONDENSER
11	840419	SEAL FAN CONDENSER
12	840306	HOUSING FAN CONDENSER
13	840307	CONDENSER 9
15	840121	HARNESS (COMPRESSOR) HOT SIDE 900
18	815236P	SCREW 12X12 TAB CSK PH STS TV (PKT 10)
19	840670	KIT EVAPORATION TRAY
	Includes	HEATER TRAY BLW
	Includes	TRAY EVAPORATION
	Includes 815236	SCREW 12X12 TAB CSK PH STS TV
20	840324P	MODULE CONTROL CHAM 120V SVC
21	881578	FILTER DRYER DUAL 4A-XH7 5GR
22	840396	PANEL CHASSIS 9
NI	610210P	SCREW MC M4X08 PAN PH MS ZNPL (PKT 10)
NI	900453P	SCREW #10X32X9.5 TYP 1 PAN PH ST (PKT 10)

REAR DUCT ASSY

Fisher & Paykel
customer care



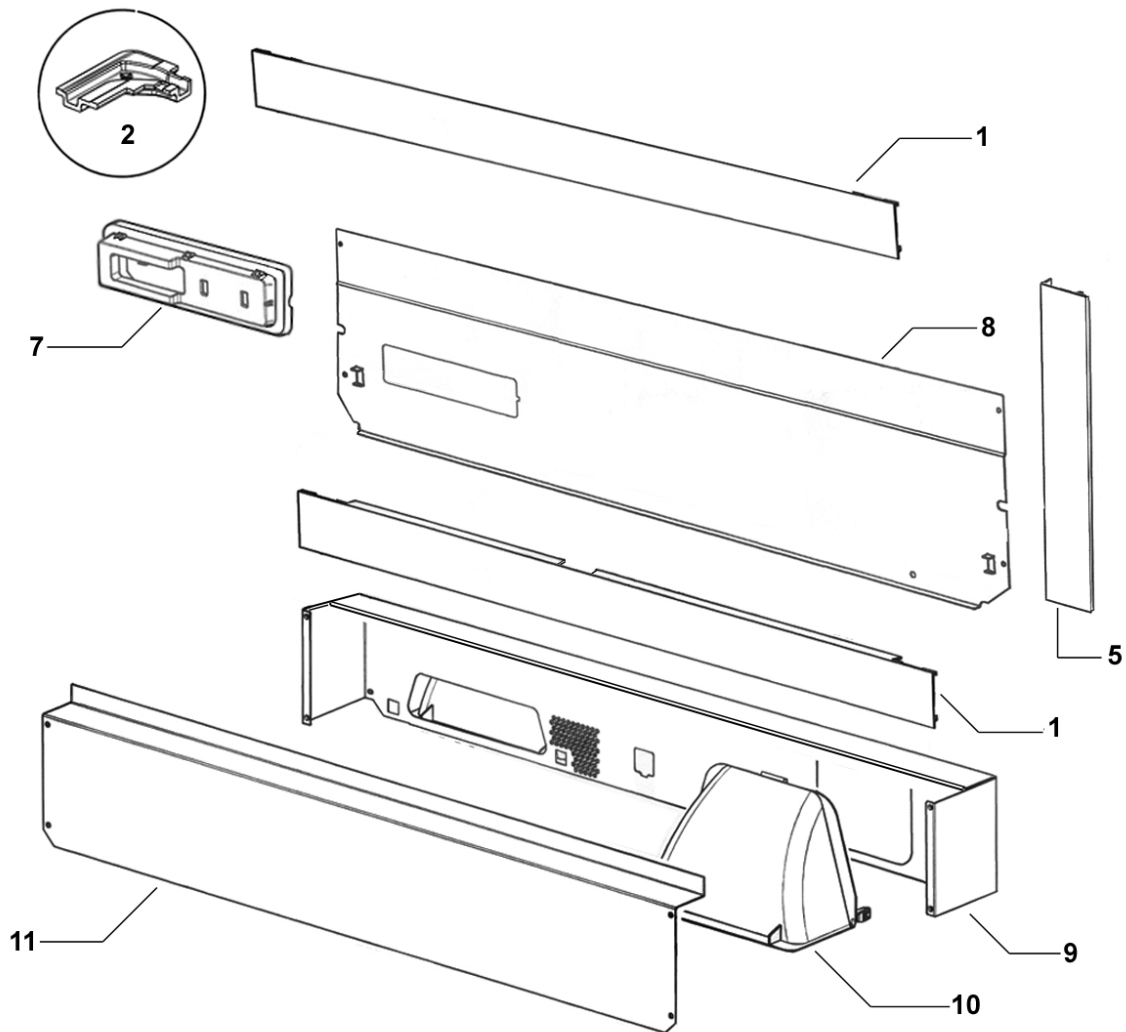
DWG001440 27 MARCH 2009

DWG 001440

REAR DUCT ASSY

REFERENCE	PART NUMBER	PART DESCRIPTION
5	840335	COVER DUCT DEL 9 640
6	840676P	DUCT DELIVERY 9 ASSY
	Includes	DUCT DELIVERY 9 640
	Includes	FILM BACKING DUCT
	Includes	PIN ADAPTOR DUCT (2)
	Includes	ADAPTOR DUCT DELIVERY
7	621954P	TIE 30R 15X3.5 HAMER (PKT 10)
8	840196P	MOD SUBCTRL RFMOD MASTER SVC
9	822156P	TIE 100MM Y1.8R (PKT 10)
10	840325	RETAINER CABINET HARNESS
11	840337	COVER CABINET SERVICES
13	840129	HARNESS DUCT DRAWER
14	813822	THERMISTOR SENSOR KIT
	Includes	SENSOR THERMISTOR
	Includes	CONNECTOR IDC UP3 3M (2)
	Includes	INSTRUCTION SHEET
15	814443P	SWITCH REED FIELD FIX KIT ST4
	Includes	HEATSHRINK 1/8" MW ADHESIVE LINED

CABINET PANELS AND FITTINGS



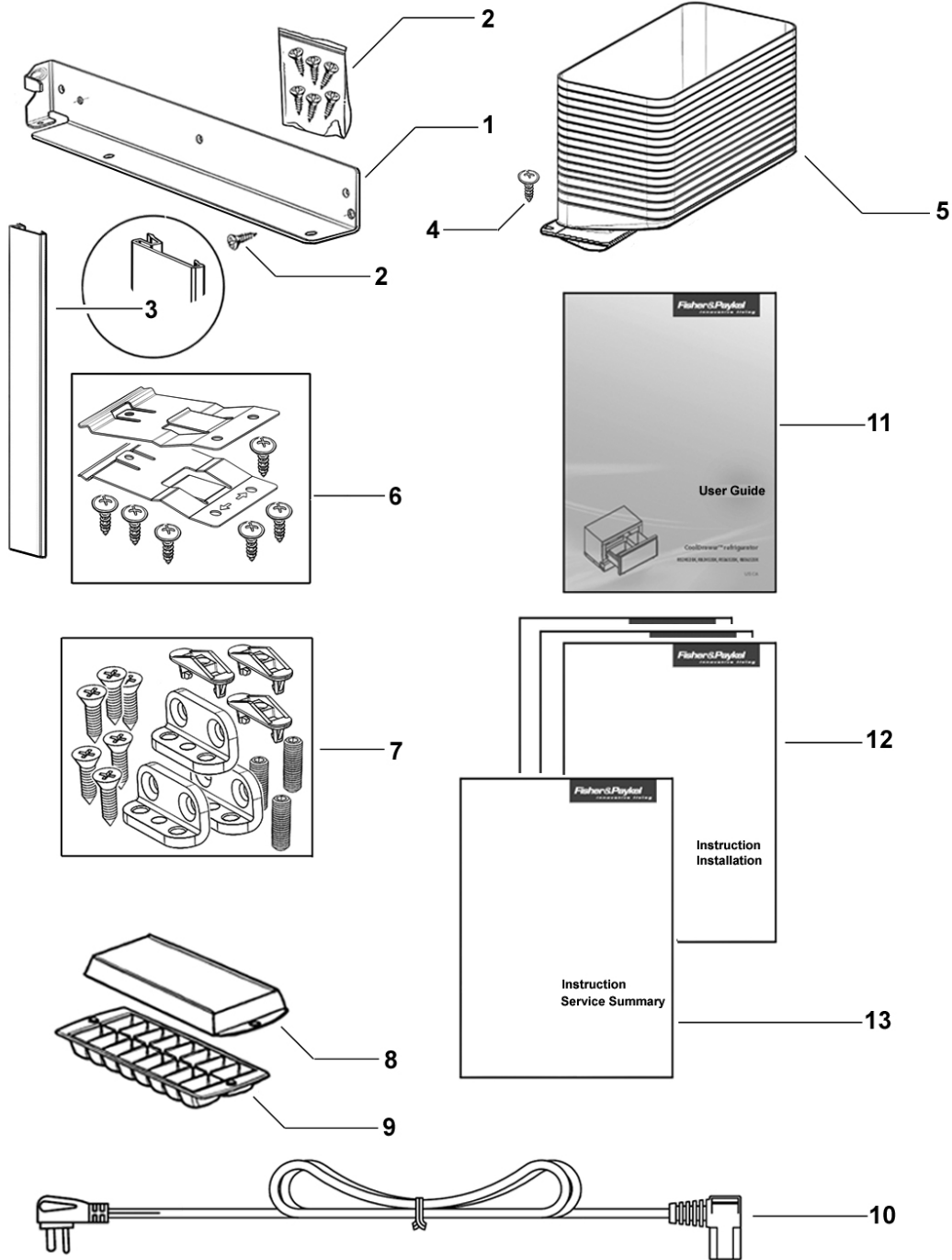
DWG001437 4 JULY 2008

DWG 001437

CABINET PANELS AND FITTINGS

REFERENCE	PART NUMBER	PART DESCRIPTION
1	840260	TRIM CAB CEILING RB9
2	840245	SEAL TRIM RH
	840246	SEAL TRIM LH
5	840251	TRIM CABINET 60 640
7	840308	GUARD POWER CORD
8	840451	TIE BEAM REAR RB9
9	840315	TIE BEAM FRONT RB9
10	840311	DUCT OUTLET CABINETRY
11	840605	COVER CHASSIS FRONT RB9 LT GY
NI	610210P	SCREW MC M4X08 PAN PH MS ZNPL (PKT 10)
NI	900453P	SCREW #10X32X9.5 TYP 1 PAN PH ST (PKT 10)

INSTALLATION & MISCELLANEOUS COMPONENTS



DWG001444 4 JULY 2008

INSTALLATION & MISCELLANEOUS COMPONENTS

REFERENCE	PART NUMBER	PART DESCRIPTION
1	840452	BRACKET INSTALL BLW RH
	840453	BRACKET INSTALL BLW LH
2	840613	SCREW ST 6X3/4 T23 CSK PH ZNPL (PKT 6)
3	840264P	TRIM INSTALLATION 640 (PKT 2)
4	840371	SCREW 8GX16 MUSH WASHER HD
5	840312	DUCT OUTLET TRANSFER
6	840633	INSTALLATION TRIM BRACKET KIT
	Includes	SCREW 8GX16 MUSH WASHER HD (14)
	Includes	BRACKET INSTALLATION TRIM (4)
7	840586	KIT ADJUSTER DOOR SKIN
	Includes	ADJUSTER SKIN DOOR ASSY (3)
	Includes	SCREW TWINTHREAD 8GX19 (6)
	Includes	INSERT THREADLOCK M5 (3)
	Includes	HOOK DOOR SKIN ADJUSTER (3)
	Includes	SCREW SET M5X15 HEX (3)
8	874108	TRAY ICE LID
9	874107	TRAY ICE BASE
10	840268	CORD SUPPLY 120V USA
11	821385	USE & CARE GUIDE COOLDRAWER
12	840661	LEAFLET INSTAL COOLDRWR PAC US
	Includes	LEAFLET INSTAL FRAMED ENG
	Includes	LEAFLET INSTAL FRMLES ENG
	Includes	LEAFLET INSTAL FRAMED ESPA
	Includes	LEAFLET INSTAL FRMLES ESPA
	Includes	LEAFLET INSTAL FRAMED FRENCH
	Includes	LEAFLET INSTAL FRMLES FRENCH
13	840680	LEAFLET SERV SUMARY RB36S US

FISHERPAYKEL.COM

© Fisher & Paykel Appliances LTD 2018. All rights reserved.

The product specifications in this booklet apply to the specific products and models described at the date of issue. Under our policy of continuous product improvement, these specifications may change at any time. You should therefore check with your Dealer to ensure this booklet correctly describes the product currently available.

US

PRODUCT CODE: 25181-A 04.18