



KIDS RANGE ROVER- INSPIRED RIDE-ON CAR

KARDRVCRPKA, KARDRVCRWHA & KARDRVCRBKA

SAFETY & WARNINGS

- The product should be assembled correctly by an adult before use.
- The car contains small components, which is not suitable for children less than 3 years old.
- Please charge up the battery before using the car. The charging should be performed by an adult.
- Ensure the battery is fully charged for 10 hours before using the car for the first time otherwise the battery will get damaged permanently and cannot be repaired.
- Please do not drive the car in dangerous places such as the public roads, streets and place with various obstacles.
- The car is limited to one child, overloading is not allowed. Maximum load capacity is 30kg.
- Please fasten the seat belt and make sure the child always sits in the car. Do not let the child stand or perform dangerous actions while driving.
- Please do not suddenly switch the forward/backward button while the car is in motion.
- To prevent damaging valuables and the car, please do not drive it in narrow spaces.
- Please check the car, the charger, the plug, the electric wire, the outer casing and other components regularly for any evidence of damage. Please stop operating the car immediately if it is damaged. Please turn off the power supply and unplug the battery connector if you do not use it for a long time.
- Children should always be supervised when driving the car.
- The remote control must be operated by an adult but not the children.
- The charging stand is at the right side of the car, please turn open the charging cover first, insert the plug into the charging hole, then plug the charger into a power outlet to charge. This should be done by an adult, do not let your children touch the power supply.
- When the driving speed of the car has slowed down significantly, please charge the car immediately. It should be fully charged for 8-10 hours. (Do not exceed 10 hours)
- It is normal for the charger or battery to get hot during charging. (Below 60°C)
- It must be used with a special charger and battery which are equipped with the car to avoid damage to the charger, battery and electrical cable.
- Please do not operate the car while charging.
- Please check if the cable connection is correct before charging.

- If there is a non-rechargeable battery in the remote control, do not attempt to charge it. If it is a rechargeable battery, the charging should be done by the adult. Please do not use different types of batteries in the remote control. Please do not use old and new batteries at the same time.
- The battery should be placed on the correct electrode.
- Please take out the battery from the remote control when it is used up.

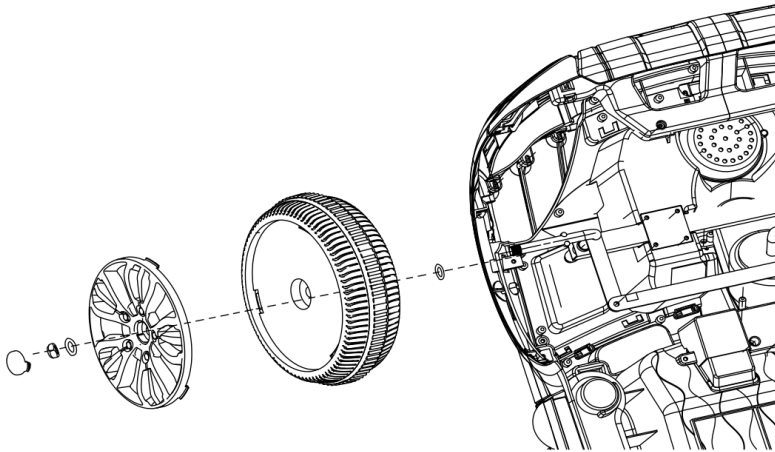
Warnings on the Car

1. The car contains small components which are not suitable for the children less than 3 years. Suitable age: 37 months - 96 months.
2. Maximum load capacity: 30kg.
3. Children should always be supervised when driving the car.
4. Do not drive the car in a public area or dangerous place, it is better to drive on flat ground.

ASSEMBLY

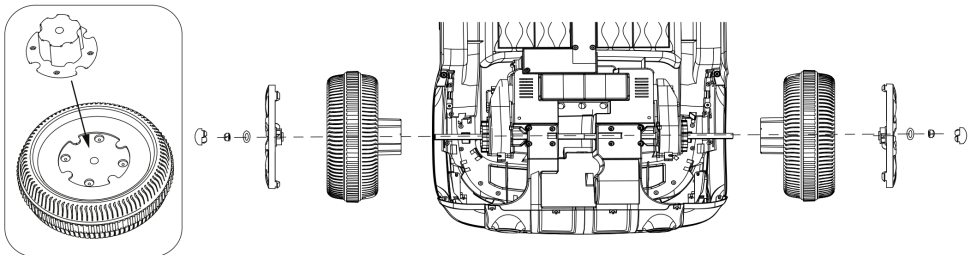
1. Front Wheel

Set the gasket into the front axle and then put the wheel on it. Next, insert the gasket on the wheel and lock them with the locknut. Finally, affix the wheel cover.



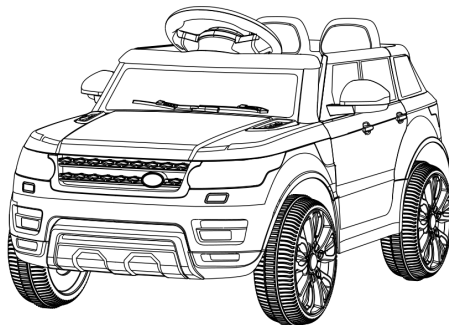
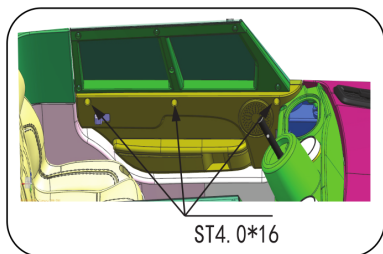
2. Rear Wheel

Place the gear on the rear wheel and attach it with 4pc ST4 0x16 screws. Next, turn the car over, insert the wheel into the rear axle then put the gasket on it and attach them with the screws. Finally, cover the wheel with a cap.



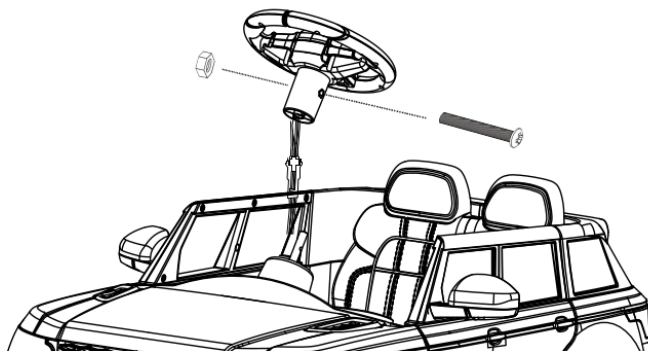
3. Wind Shield

Take out the windshield carefully from the box, then insert the windshield into the slot. It is assembled correctly when you hear a click.



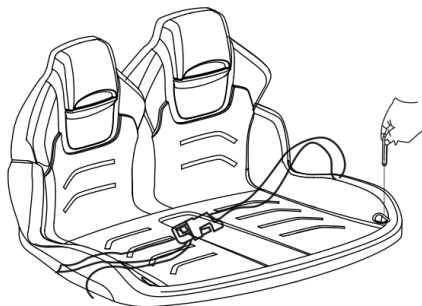
4. Steering Wheel

Connect the connector on the steering wheel with the one on the car, then insert the steering wheel into the pillar on the dashboard. Finally, attach the steering wheel with a screw.



5. Car Chair

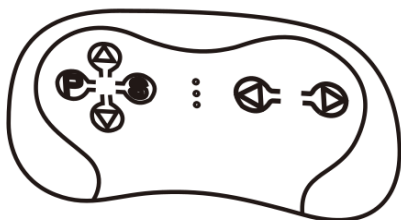
Connect the positive pole of the power supply before installing the car chair. The hook of the seat should be aligned in the slot, then tighten the fixing holes on both sides and the front of the seat with screws turning clockwise. Insert the charger into the charging hole for charging. Do not operate the car while charging.



6. Adding Batteries to the Remote Control

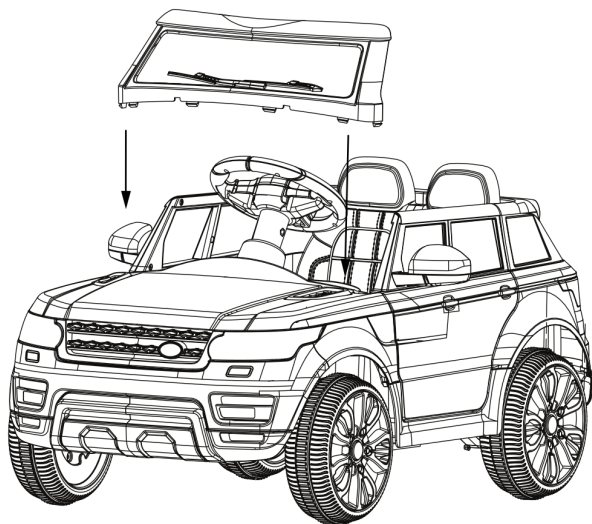
Remove the screw on the battery cover with a screwdriver and then remove the battery cover, insert the 2 AAA 1.5V batteries. It needs to match the frequency to control the car.

Refer to the remote control section of this user guide for pairing instructions.



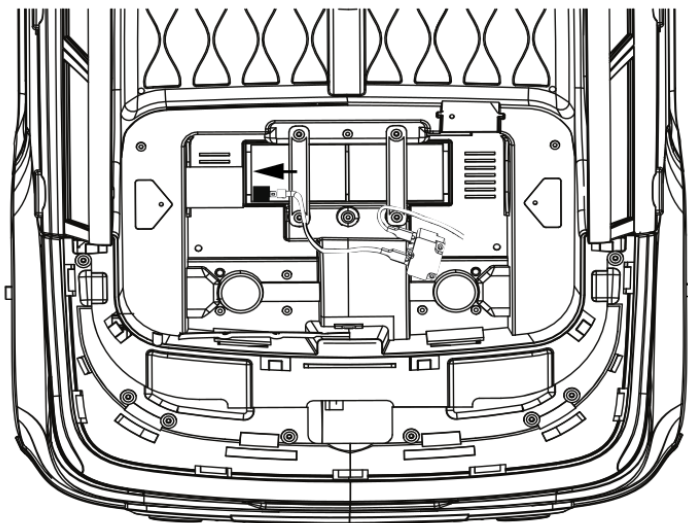
7. Windshield

Remove the windshield carefully from the box, then insert the windshield into the slot: it will click into place.



9. Battery

Connect the red wire to the storage battery as indicated below:



10. Wheels

i. Place the gasket on the wheel axle.



ii. Place the wheel and then the nut on the axle.



iii. Place the cap on the wheel.



Function details

1. Turn on the ignition, the car starts with lights on. The display on the car will show the voltage of the car when the car starts.
2. Switch the Forward/Backward button to the forward position, then step on the footswitch, the car goes forward. Switch the Forward/Backward button to the backward position and then step on the footswitch, the car moves backwards.
3. There are a horn button and music button on the steering wheel.
4. On the dashboard, there is a Mode button, Pause/Play button, Next/+ button, Prev/- button, SPK button. MP3 interface, TF card interface and USB interface.
5. Press the Mode button, the car will play music. Holding down the Next/+ and Prev/- volume controls on the music player changes the overall volume for all audio effects with the car, including the horn/SPK
6. Please turn off the power switch and disconnect the battery if the car is not operated for a long time and ensure that the car is recharged once a month.



Music Console



REMOTE CONTROL

When using the unit for the first time, you must pair the frequency of the remote with the car.

1. Take out the remote control and install the battery.
2. Press and hold the frequency button for 2-4 seconds: the LEDs will flash slowly.
3. Turn on the power of the car and the LEDs will turn solid when pairing is successful.
4. If the remote and car do not pair, (the LEDs will continue flashing), remove the battery and repeat steps 1-3.
5. The indicator LED will turn off 10 seconds after the last input to save power.



SPECIFICATIONS

Battery	2x6V 4.5Ah
Motor	12V 30W,12V 15W
Charger	Input: AC220V-240V, 50Hz-60Hz Output: DC 12V, 1A
Maximum load	30kg
Working hour	Recharge hour 8-12 hour, Working hour: 1-2 hour
Speed	3-5km/hr
Age	37 months-96 months
R/C Battery	AAA 1.5Vx2
R/C Distance	15±5m

IN THE BOX

Electric car	1 piece
Steering wheel	1 piece
Chair	1 piece
Car Wheel/Cap	4 pieces
Charger	1 piece
MP3 connector	1 piece
User manual	1 piece
Remote control	1 piece

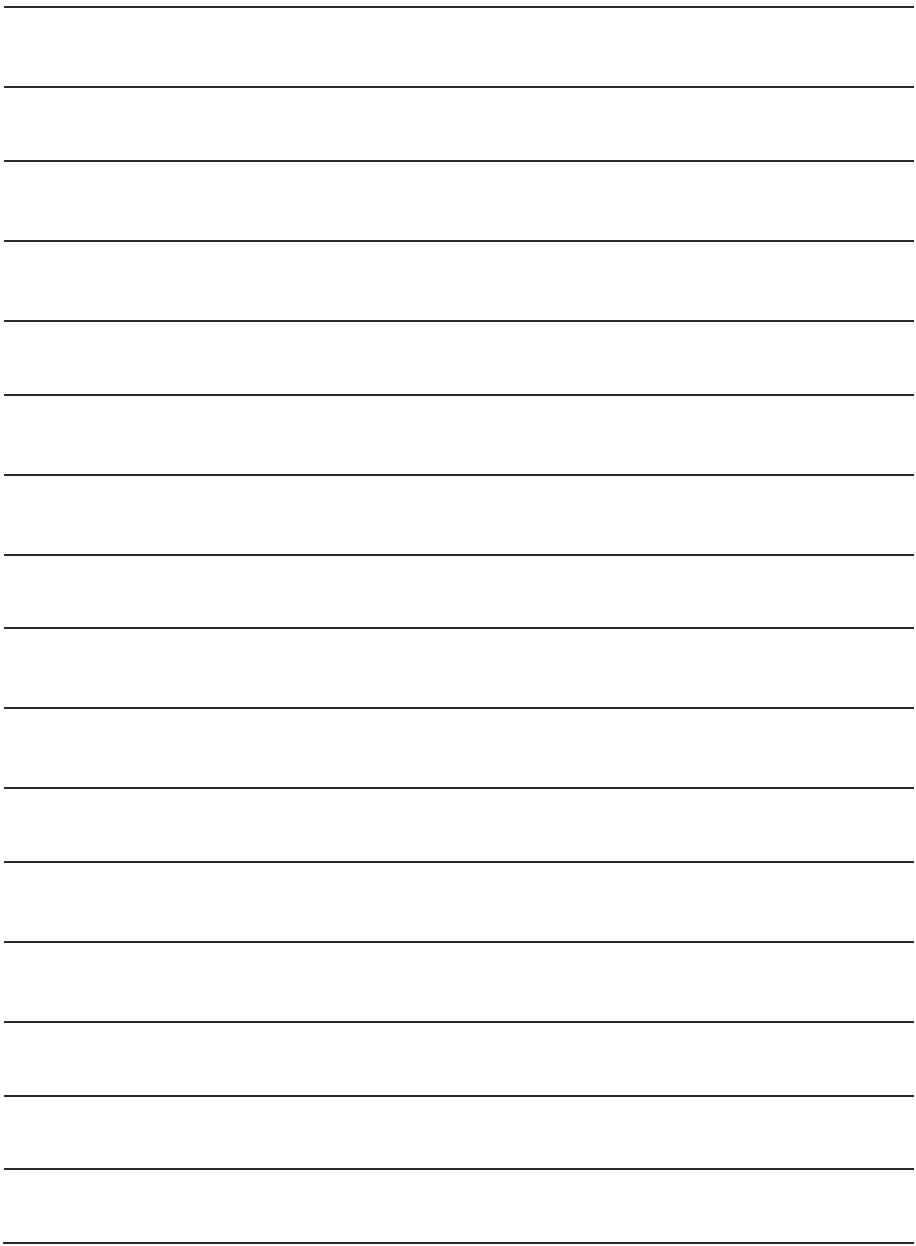
TROUBLESHOOTING

Before attempting to use the car, make sure the battery is connected under the seat as per the instructions in assembly.

Malfunction	Analysis	Solutions
Car cannot run	Low battery voltage	Charge the battery
	Battery damage	Replace new battery
	Cable connectors are off	Reconnect the connectors
	Motor damage	Replace new motor or repair it
	Wheel latch is lost	Equip with new wheel latch
	Fuse damage	Replace new fuse
	The power supply is off	Turn on the power switch
	Battery not connected	Follow Assembly instructions
The car is running slowly	The battery is not fully charged	Battery should be fully charged
	Motor damage	Replace new motor
	The car is overloaded	Reduce the load capacity
	The battery is used up	Replace new battery
The battery cannot be charged	Charger/battery damage	Replace a new charger or battery
	Charger socket damage	Replace new socket
Running time is short	The battery is not fully charged	Battery should be fully charged
	The battery is used up	Replace new battery
Car shaking while driving	Poor motor contact	Reconnect the circuit
Wheels falling off	Wheels not fully connected	Follow Assembly instructions
The car is noisy while driving	Gearbox damage	Replace new gearbox

NOTES

[illegible]



Need more information?

We hope that this user guide has given you the assistance needed for a simple set-up. For the most up-to-date guide for your product, as well as any additional assistance you may require, head online to **help.kogan.com**

kogan