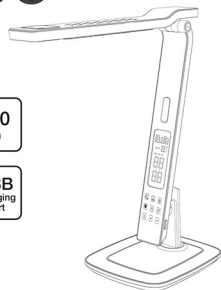


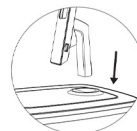
# Tempo

10W LED Task Lamp

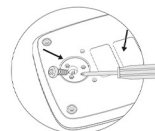


PLEASE RECYCLE ALL PACKAGING MATERIAL SUPPLIED WITH THIS PRODUCT

## Installation:



1. Place lamp body into base.



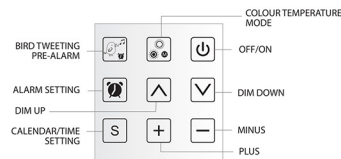
2. Fasten screws on the base to secure.



3. Insert plug adaptor into the back of the lamp.

USB PORT

## Operation:



## Tempo Speaker Lamp Instructions

**Product Name:** Tempo

**Model #:** A19911

**Description:** LED Task Lamp

### Please note the following safety precautions:

This appliance is not intended for use by young children or infirm persons unless they have been adequately supervised by a responsible person to ensure that they can use the appliance safely. Young children should be supervised to ensure that they do not play with the appliance.

If the supply cord is damaged, it must be replaced by the manufacturer, its service agent or similarly qualified persons in order to avoid a hazard.

To prevent damage to the appliance do not use alkaline cleaning agents when cleaning. Use a soft cloth and a mild detergent. Always switch off before cleaning.

Failure to maintain the lamp in a clean condition could lead to deterioration of the surface that could adversely affect the life of the appliance and possibly result in a hazardous situation.

This product is not repairable. If any parts are broken, the whole unit should be replaced.

**WARNING:** THE MAXIMUM OUTPUT OF THIS USB CHARGER IS 5V 1A. THIS PRODUCT IS NOT SUITABLE FOR CHARGING HIGH POWERED PRODUCTS SUCH AS TABLETS. THE CONNECTION OF ANY DEVICE REQUIRING MORE THAN THE MAXIMUM AVAILABLE OUTPUT MAY CAUSE DAMAGE TO THE PRODUCT OR THE DEVICE IN USE.

## Specifications:

Driver Input	100-240V~ 50Hz
Driver Output	12VDC, Max 1A
Power Consumption	10W
Globe Type	7.5W LED
Lumens	450lm
Colour Temperature	
Audio Input	3.5mm AUX Cable
USB Output	5VDC, 1A

## Smart Alarm Settings (Gradual Wake Up)

This task lamp is equipped with a smart pre-alarm setting. This pre-alarm will go off before the main alarm and replicates birds tweeting and gradually turns on the light. This pre-alarm can be set at 2, 5, 10 or 15 minute intervals before the alarm, and will continue to sound each minute before the main alarm. See instructions below:

- After the alarm has been set, press the "BIRD TWEETING ALARM" button on the light control panel to begin setting gradual alarm.
- Tap between the settings below, and adjust using the "PLUS" and "MINUS" buttons.

0 (No tweeting or gradual light)	2	5	10	15
----------------------------------	---	---	----	----

- Press the "BIRD TWEETING PRE-ALARM" button again to confirm pre-alarm.
- The music icon on the screen will be blinking when the pre-alarm is active, and will continue to sound daily.
- When the pre-alarm rings, turn off by pressing the "CALENDAR / TIME SETTINGS" button on the control panel.
- To cancel the pre-alarm, press the "BIRD TWEETING PRE-ALARM" button.

## Using your Tempo Task Lamp

To turn on the lamp, gently tap the "OFF / ON" switch.

## Dimmable Lamp and Colour Changing Modes

- To adjust the brightness, gently tap and hold the "DIM DOWN" and "DIM UP" buttons located on the light control panel.
- To adjust the colour temperature settings, tap the "COLOUR CHANGE CONTROL" button located on the light control panel. Tap between the settings below.

3500K (Warm Light)	5000K (Daylight)	6500K (Cool Light)
--------------------	------------------	--------------------

## Calendar Settings

- To adjust the calendar settings, press the "CALENDAR / TIME SETTINGS" button to begin time setting mode.
- Tap between the settings below, and adjust using the "PLUS" and "MINUS" buttons.

Year	Month	Day	Hour	Minute	Exit Calendar Setting
------	-------	-----	------	--------	-----------------------

## Alarm Settings

- Press the "ALARM SETTING" button on the light control panel to begin setting alarm.
  - Tap between the settings below, and adjust using the "PLUS" and "MINUS" buttons.
- |      |        |                    |
|------|--------|--------------------|
| Hour | Minute | Exit Alarm Setting |
|------|--------|--------------------|
- Press the "ALARM SETTING" button to confirm alarm.
  - The alarm icon on the screen will be blinking when the alarm is active, and will continue to sound daily.
  - When the alarm rings, turn off by pressing the "CALENDAR / TIME SETTINGS" button on the control panel.
  - To cancel alarm, press the "ALARM SETTING" button.