



4FT/5FT/6FT LED FRIDGE LIGHTS

WARNING, CAUTION, SAFETY AND INSTALLATION INSTRUCTIONS

WARNING

- Installation, service, and maintenance of luminaries should be performed by a qualified licensed electrician.
- Keep these instructions for future reference.

CAUTION

- Consult a qualified electrician to verify that the branch circuit conductor is appropriate for the installation, in compliance with the National Electrical Code (NEC).
- Installation of this fixture requires a person familiar with the construction and operation of the refrigeration system's electrical system and the hazards involved. If not qualified, do not attempt installation. Contact a qualified electrician.
- Refrigeration system wiring, power supply, or other electrical parts may be damaged when drilling for installation or retrofit kit hardware. Inspect wiring and components for damage.
- This fixture can be installed in wet areas (IP54).
- Do NOT install the product near heat sources.
- The wiring has to be prepared with supplementary insulation before the fixture can be connected. When the input wire is connected into the terminal or power supply, the connection must be double insulated.
- Install this fixture only in the refrigeration system that has the construction features and dimensions shown in the photographs and/or drawings and where the input rating of the retrofit kit does not exceed the input rating of the fixture.
- Only make or alter the open holes as indicated in the photographs and/or drawings during kit installation. Do not leave any other holes in the wiring enclosure or electrical components.
- The retrofit kit is accepted as a component of a refrigeration system where the suitability of the combination shall be determined by authorities having jurisdiction.
- The light source of this retrofit kit is not replaceable. When the light reaches the end of its life, the entire fixture must be replaced.

NOTICE

- Do NOT touch the fixture body when the light is in use or within 10 minutes of turn off power.

Installation Instructions

1. Turn off power to the refrigeration unit being retrofitted.
2. To connect the fixtures one by one, do not exceed the maximum amount.

Size	D (Vertical Hole Distance)	Linkable (Maximum)
4 Foot	43.5" (1105mm)	18 pcs
5 Foot	55.31" (1405mm)	15 pcs
6 Foot	65.75" (1670mm)	12 pcs

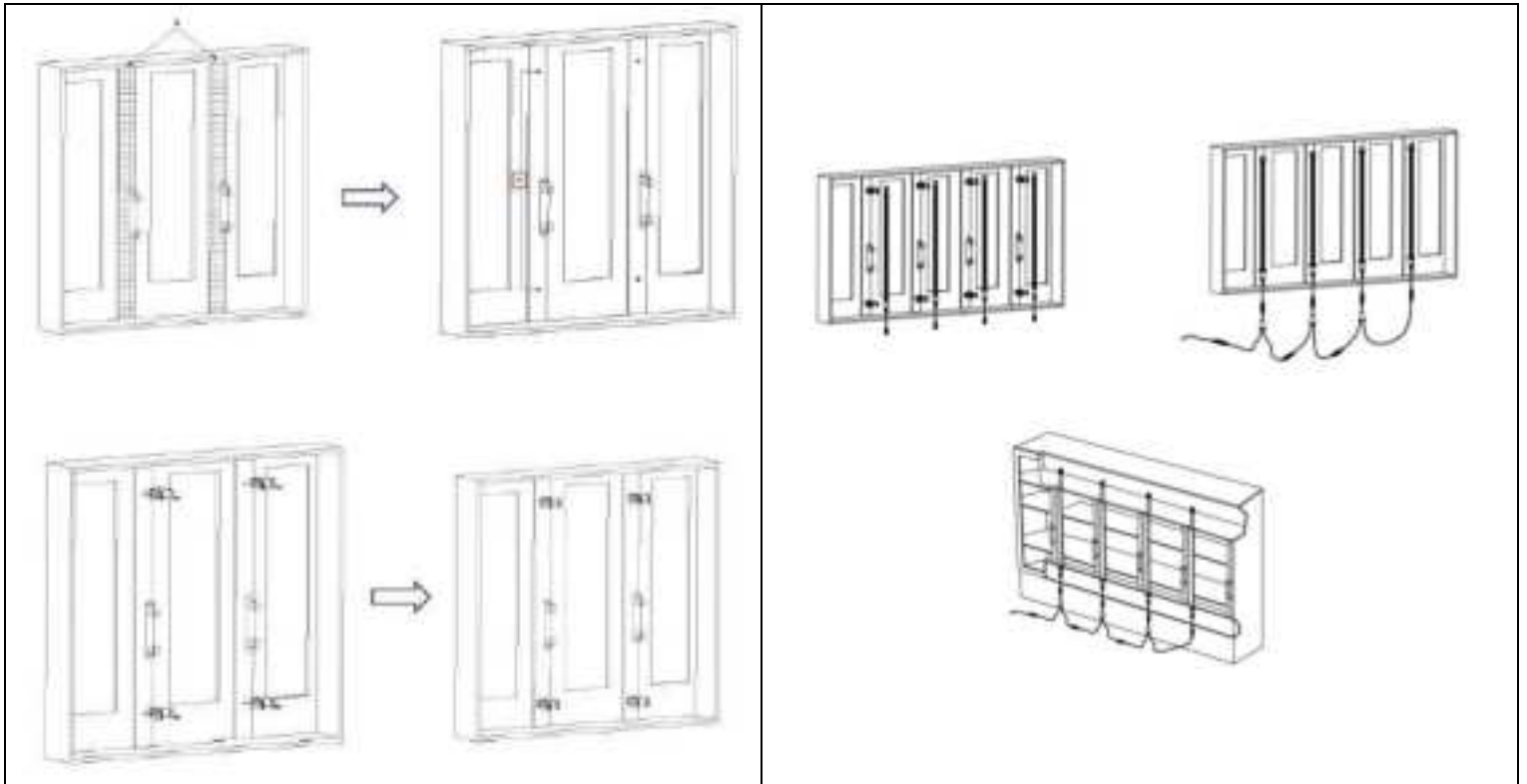
3. Using a drill bit, drill two holes into the frame or ceiling of the refrigerators, spacing them according to the 'D Vertical Hold Distance' based on the tube size specifications chart above.
4. Secure a clip into each hole using a self-drilling screw, making sure the clips are positioned horizontally and facing upward to allow the tube to snap on easily.
5. Snap the tube lamp body into each clip, ensuring they are securely fitting in place, then make all connections according to the wiring diagram.



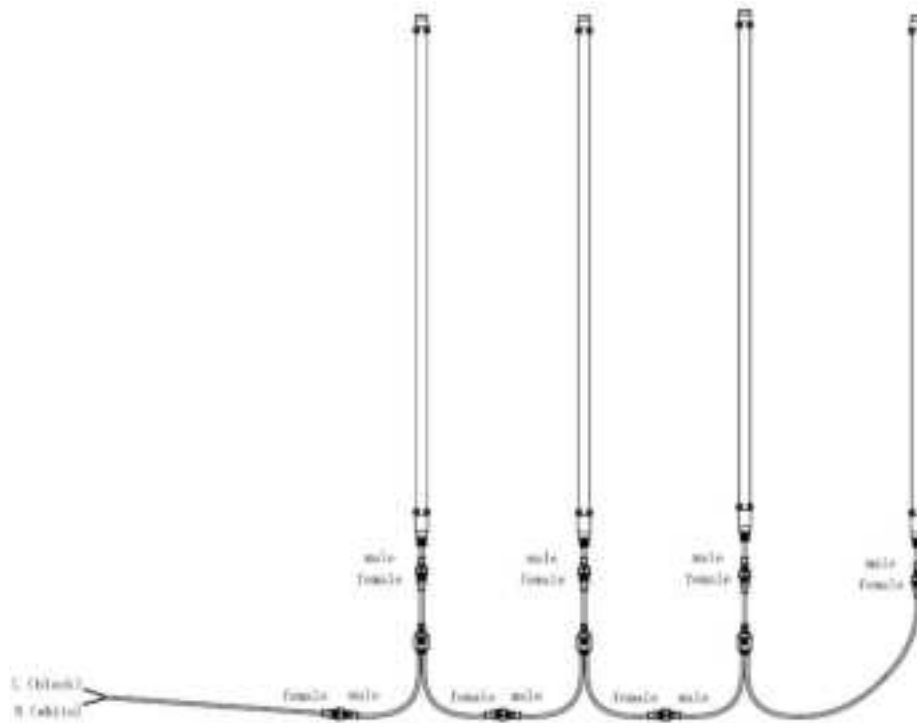


4FT/5FT/6FT LED FRIDGE LIGHTS

WARNING, CAUTION, SAFETY AND INSTALLATION INSTRUCTIONS



Wiring Diagram



**⚠ WARNING**

- Before installing, servicing, or performing routine maintenance upon this equipment, follow these general precautions.
- To reduce the risk of death, personal injury, or property damage from fire, electric shock, falling parts, cuts/abrasions, and other hazards, read all warnings and instructions included with and on the fixture box and all fixture labels.
- Proper grounding is required to ensure safety.
- Power must be turned off at the breaker before installation or maintenance.
- This product must be installed in accordance with the applicable installation code by a person familiar with the construction and operation of the product and the hazards involved.
- Wear gloves and eye protection at all times while installing, servicing, or performing maintenance on the luminaire, and avoid direct eye exposure to the light source while it is on.
- To prevent wiring damage or abrasion, do not expose wiring to edges of sheet metal or other sharp objects.
- Do not install damaged product. Inspect luminaire for damage that may have occurred during transit. If damaged, contact the manufacturer immediately.
- These instructions do not purport to cover all details or variations in equipment nor to provide every possible contingency to meet in connection with installation, operation, or maintenance. Should further information be desired or should particular problems arise which are not covered sufficiently for the purchaser's or owner's purposes, contact the manufacturer.

⚠ ADVERTENCIA

- Antes de instalar, reparar o realizar el mantenimiento de rutina de este equipo, siga estas precauciones generales.
- Para reducir el riesgo de muerte, lesiones personales o daños a la propiedad por fuego, descarga eléctrica, caída de piezas, cortes / abrasiones y otros peligros, lea todas las advertencias y instrucciones incluidas con y en la caja del dispositivo y todas las etiquetas del dispositivo.
- Se requiere una conexión a tierra adecuada para garantizar la seguridad.
- Se debe apagar la energía en el disyuntor antes de la instalación o el mantenimiento.
- Este producto debe ser instalado de acuerdo con el código de instalación aplicable por una persona familiarizada con la construcción y operación del producto y los peligros involucrados.
- Utilice guantes y protección para los ojos en todo momento durante la instalación, el servicio o el mantenimiento de la luminaria, y evite la exposición directa de los ojos a la fuente de luz mientras está encendida.
- Para evitar daños o abrasiones en el cableado, no exponga el cableado a bordes de láminas de metal u otros objetos afilados.
- No instale un producto dañado. Inspeccione la luminaria en busca de daños que puedan haber ocurrido durante el tránsito. Si está dañado, comuníquese con el fabricante de inmediato.
- Estas instrucciones no pretenden cubrir todos los detalles o variaciones en el equipo ni proporcionar todas las posibles contingencias a cumplir en relación con la instalación, operación o mantenimiento. Si desea obtener más información o si surgen problemas particulares que no están suficientemente cubiertos para los propósitos del comprador o propietario, comuníquese con el fabricante.