

## HOLDER Car Mount

MAKE YOUR LIFE SIMPLE



SCAN THE CODE TO  
WATCH USING VIDEO

### Specifications

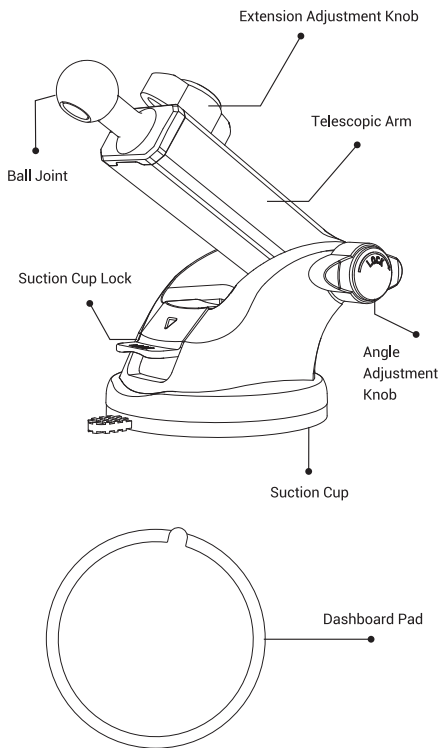
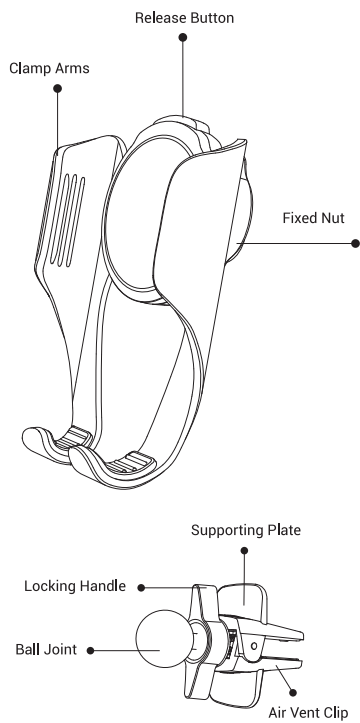
Product Name	Car Mount
Model	CTEZB08
Applicable Places	Dashboard/ Windshield/ Air Vent/ Desktop
Compatible Devices	4.7-7 Inches Phone
Package List	Car Mount ×1, Suction Cup ×1, Dashboard Pad ×1, Air Vent Clip ×1, User Guide ×1

The parameters above are derived from the laboratory of VICSEED. The actual parameters may differ from product to product or other factors. All images shown here are for reference only.



RoHS

### Overview



### Attentions

1. Please install the car mount in a suitable place before starting the journey, do not operate and adjust the car mount while driving.
2. Do not install the car mount in a position that interferes with the operation of the airbag or hinders driving.
3. Keep the car mount away from children.

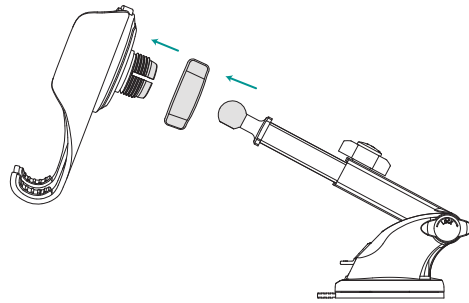
### Tips for Suction Cup

1. If the surface is flat and smooth, you can use the suction cup on the dashboard directly. While the surface is flat but not smooth, please use the suction cup on the dashboard pad.
2. Do not stick the suction cup to curved surfaces, plush fabric or uneven surfaces. Otherwise it would not be attached securely.
3. It is not recommended to attach the suction cup to the surface of leather, wall or glass film, because the suction cup with strong viscosity and attractiveness, which may cause surface damage.
4. If the suction cup is frequently used in high temperature, low temperature or humid conditions, the suction force will decrease; Please avoid direct exposure to the sun for a long time.
5. After using it for a while, if the suction is not sticky enough, please take down the suction cup and wash it with warm soap water. It will be sticky again after drying.
6. Please protect the suction cup with plastic wrap when not in use.

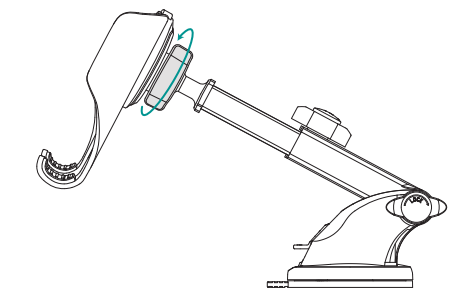
### Installation Steps

#### Method 1 – Use with the Suction Cup

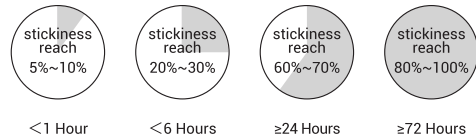
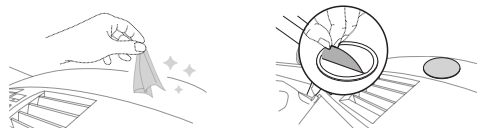
1. Unscrew the fixed nut completely, let the ball joint pass through the fixed nut (The thread must face to the groove). Push the ball joint firmly into the groove on the back of the car mount.



2. Tighten the fixed nut.

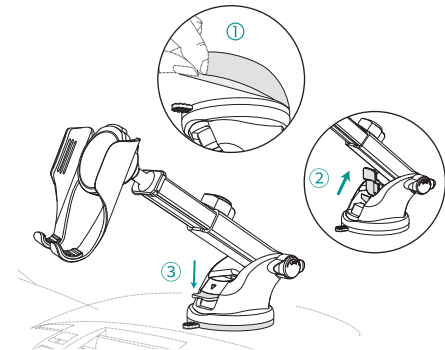


3. Choose a flat surface on the dashboard, and clean the surface where you need to install the car mount with a wet cloth. Wait it to dry, and then install the dashboard pad. (Tear off the red protective sticker of dashboard pad, stick the pad to the position where you want to install the car mount. Press it firmly for 1 minute to fix it. Let it sit for 24 hours before installing the car mount.)

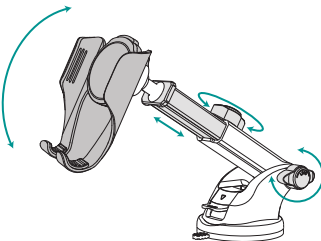


The dashboard pad is disposable. Once pasted, it's hard to remove. Once applied, it cannot be used again. Please choose the appropriate position to install the dashboard pad.

4. Attach the suction cup to the windshield/dashboard hard and press the suction cup lock to bottom position(not the middle position) to secure the car mount.



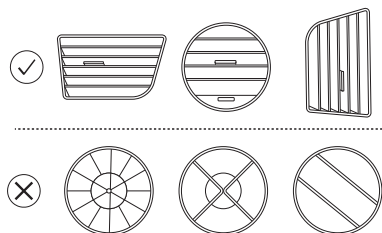
5. Adjust the angle of the car mount to fit your view. (Twist the extendable arm adjusting nut to adjust the length of the arms. Twist the extendable arm retaining nut to change the angle of the arms.)



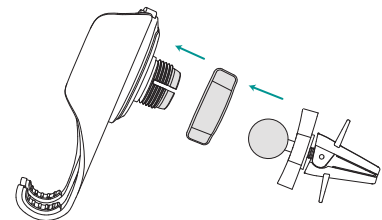
### Method 2 – Use with Air Vent Clip

#### • Suitability for Car Air Vents

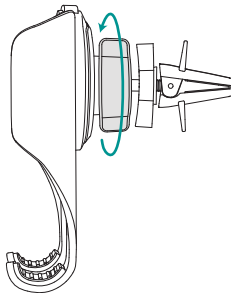
Compatible with horizontal and vertical air vents, not for round vents.



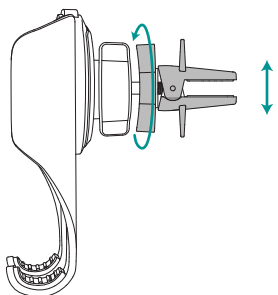
1. Unscrew the fixed nut on the back of the car mount, pass the ball joint through the fixed nut. Push the ball joint into the groove hard until it falls into the socket.



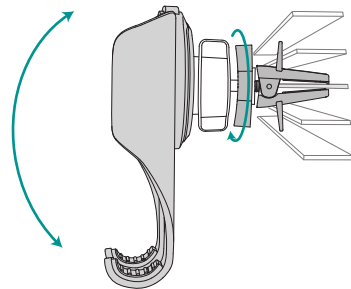
2. Tighten the fixed nut.



3. Twist the locking handle to adjust the opening size of the air vent clip.

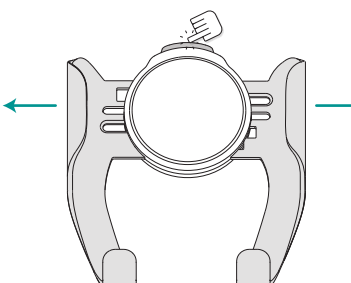


4. Insert the vent clip into car air vent blades totally, so they will attach together securely. Then twist the locking handle to secure the car mount and adjust the angle of the car mount to fit your view.

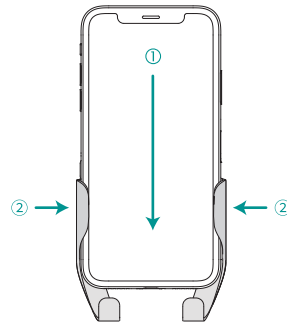


### Using Steps

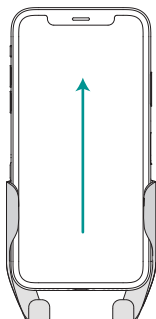
1. Press the release button to release clamp arms.



2. Slide in your cell phone then press the clamp arms with force to adjust the width.



3. Easily slide phone out or press the release button to take out your phone.



### Customer Service



12-month limited warranty



Lifetime technical support



support@vicseed.com



@vicseedglobal

For more information, please visit:  
[www.vicseed.com](http://www.vicseed.com)

SHENZHEN HONGMI TECHNOLOGY CO., LTD.  
Add : RM1503, BLK C, Zhantao Technology BLDG, Minzhi Avenue,  
Minzhi ST, Longhua DIST, Shenzhen, China  
Email : support@vicseed.com  
Web : www.vicseed.com  
Shenzhen Hongmi Technology Co., Ltd. All Rights Reserved.

Made in China