

1D Barcode Scanner User Manual

**Barcode Scanner Quick
Set-up
V2.0**

Notices:

- All softwares(including firmwares) within the scanner packages are protected by the copyright of our company.
- Manufacturer claims to have the right to upgrade the software(including the firmwares) in the target of promoting the stablization or other functions of scanner.
- If the contents of brochure corrected, we will not inform you in advance.
- The standard package contains: One Laser Scanner, One USB Wire, and a User Manual
- Optional Accessory: 1 Stand

Brief Introduction:

Our series scanner has powerful light source and enhanced long distance scanning technology so that it is able for us to quickly recognize damaged dusted and bad printing barcode. Industrial time-enduring quality guarantees its privilege of stable function and long bearing. High volume buzzer provides another way to confirm in chaotic industrial environment.

Strengths:

- Enhanced water proof and dust proof capability to IP-54 Industrial Level, especially for use in moist and hazy environment.
- Manual Trigger/ Continuous Scan/ Self-induction mode(Optional), ultra comfortable operating
- Strong barcode identify strength, which could scan colored barcode, plastic covered barcode, non-white background barcode.
- Recognize, set and update software from remote distance.
- Up to 10,000 hours laser life, French press key with life of 3 million pressing times.
- 1.8m Free Fall down to concrete ground. Satisfy 24 hours long time using.
- Support RS232,usb,and USB-COM.
- Flexible, harmony shape reduces overfatigues, level up working efficiency.

Applications:

- Suitable for commercial use(3C, Publishing, Fabrics, Medicine, Cosmetics,etc),Retailing, Post, Telecom, Warehouse, Express, Police, Customs, Banks, Hospitals.
- Compatible with Windows98 and above, Android, Linux, operating systems. Plug-in use, no need for installation. Compatible with all kinds of POS, Tablet, Cash Drawer, Tax Control Machines. Also work with various retailing, ERP, warehouse management,Invoking softwares.
- Multinational Keyboard Language

Laser Scanner Standard:

Technical Parameters

Scan Mode: Single line Bi-directional

Light Source: 650(visible laser)

CPU: 32 digits ARM

Scan Speed: 200 line/sec

Depth of Scan: 2.5mm-600mm

Width of Scan: 18cm

Print Contrast: 20% minimum

Corner: +/- 30°

Elevation: +/- 45°

Deflection: +/- 60°

Decode Capacity: UPC/EAN,UPC/EAN(include complement code), Code 128,UCC/EAN128,Code39, Code39 Full ASCII, Code128 Full ASCII, Codabar,Interleaved 2of5,Code93,MSI, Code11, ISBN, ISSN, China Postage,etc.

Bit Error Rate: 1/5 million

Resolution:3 mil

Prompt:buzzer, Led Light

Scan Mode: Handheld/ automatical scanning mode

Press key Life:10 million

Laser Life: 10,000 hours

Interfaces: RS232,USB-COM,USB

Wire Length:2m(30m optional)

Working Conditions

Working Temperature: 32°F to 104°F/0°C to 40°C

Storage Temperature: -40°F to 140°F/-40°C to 60°C

Humidity: 5% to 95% relative humidity (no condensation)

Ruggedness: Resist about 6 times drops from 1.5m to concrete ground

Ambient Light Immunity: Under normal office and factory ambient lighting conditions, or exposed to the sun it won't take any effect.

Electrostatic discharge: In line with 15KV air discharge and 8KV contact discharge requirements

Related Regulations

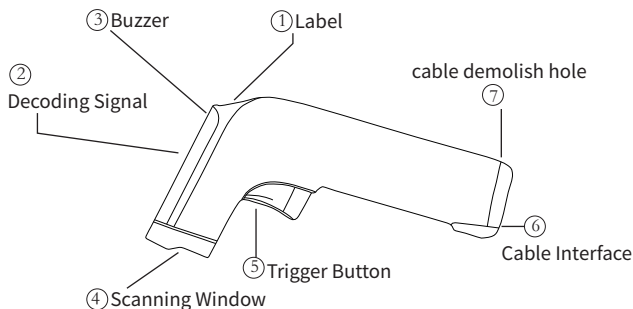
Electrical safety: In accordance with UL1950、CSA C22.2 No.950、

EN60950/IEC950 EMI/RFI: FCC Part 15 Class B、

European Union EMC Directive、Taiwan EMC、

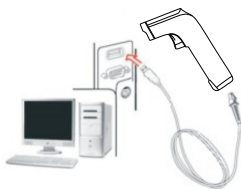
Environment Terms: In accordance with RoHS directive 2002/95/EEC

Outlook



Wire Installation

USB Wire Installation

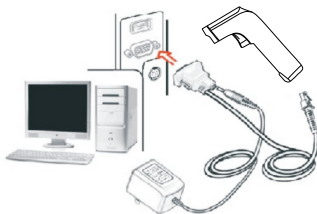


One USB Wire optional, as the above picture shows. Notice:
The host could provide power for the scanner through USB wire.
Scanner does not need additional power supply.

Installation process is as follows:

1. Plug the RJ45 end to the tail of the scanner.
2. Connect the other end to the PC USB interface.
3. The buzzer and LED light will give a signal if connected right.
4. Windows will detect the USB device automatically.

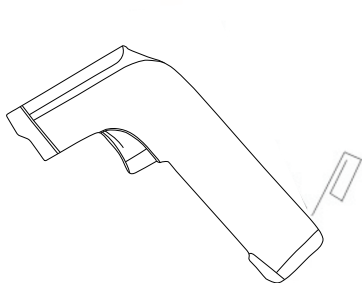
Installation of RS232 Wire



The scanner can choose one RS-232 optional, its connection is as shown in the picture. The installation method is as follows:

1. Shut down the power
2. Connect the crystal end to the tail of the scanner.
3. Connect the other end to the host's 9-pin interface.
4. If the host (Ninth pin of the serial interface) doesn't supply electricity, you will need an additional 5V power supply.
5. Turn on the power supply, the buzzer and LED light will give out signal if connected right.

Demolition of the wire



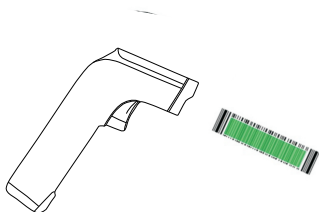
The demolition method is as follows:

1. Find the hole close to the end of the scanner
2. Put a thin needle into the hole, softly drag the wire out

Scanning

Handheld Scanning

1. Guarantee the connection is all right.
2. Press the key, the red laser came out. Let the line covers the barcode, when the beep sound rises, the green led vanishes, than the barcode is read and the data transmitted to the host.



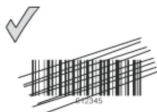
Manual Mode



Autosense

Auto mode:

1. In some applications, we will need auto function. The auto mode has 'continuous function' and 'autosense function'.
2. The stand should be adjusted right to get a good reading distance



General Configuration

Note: After scanning the Defaults Barcode, you will reset configuration to defaults

Reset Configuration to Defaults



Check Version:



Working Mode:



Trigger Mode



Continuous Scanning



Automatic flash



Turn on IR Self-induction



Turn off IR Self-induction

End Mark Set:



Add CR



Start New Line of All Barcodes



Cancel End Mark

Sound Set:



Turn on Sound



Turn off Sound

Interface Settings:



Serial Port



USB Keyboard



USB Virtual Serial Port

Serial Transmit Set:



baud rate 600bps



baud rate 1200bps



baud rate 2400bps



baud rate 4800bps



baud rate 9600bps



baud rate 19200bps



baud rate 38400bps



baud rate 57600bps



baud rate 115200bps

Capital and Lowcase Switch:



Turn off Switch



Lowcase Set



Capital Set



Capital and Lowcase Switch

Forward and Reverse:



Forward Image Recognition



Reverse Image Recognition

Set Prefix and Suffix

A :Scan the "Allow for Prefix Adding" or "Allow for Suffix Adding" setting barcode



Allow for Prefix Adding



Allow for Suffix Adding

B:Select the desired contents of prefix or suffix (Appendix A)

C.Scan "Exit add prefix and suffix mode" Setting-up Barcode



Exit add prefix and suffix mode

D.If you need remove both the prefix and suffix, please scan "remove all prefix" or "remove all suffix"



remove all prefix



remove all suffix

Language Setting:



America (English)



Canada (French)



Dutch



Spanish



Argentina
(Latin American)



Brazil
(Portuguese)



Danish



English



Italian



France (French)



German



Norway
(North sami)



Swedish



Slovak



Portuguese



Czech



Belgium(Dutch)



Turkish-F



Turkish-Q



Polish



Switzerland(German
,French)



Croatian



Hungarian



Japanese



Russian



Arabic

Turn on Various Types of Barcode



turn on code39



turn off code39



turn on code39FullASCII



turn off code39
FullASCII



turn off code39 MOD43
Check Digit



turn on code39 MOD43
Check Digit



turn on code39 check
digit



turn off code39 check
digit



turn off code32



turn on code32



Set code39 Minimum
Length to 1



Set code39 Minimum
Length to 2



Set code39 Minimum
Length to 3



turn on UPC-A



turn off UPC-A



turn on UPCA transfer to
EAN13



turn off UPCA transfer to
EAN13



turn on UPCA check
digit



turn off UPCA check
digit



UPCA not hide system
digit



UPCA hide system
digit



turn on UPC-E



turn off UPC-E



turn on UPCE transfer
to UPCA



turn off UPCE transfer
to UPCA



turn on EAN13



turn off EAN13



transmit EAN13 check
digit



not transmit EAN13
check digit



turn on EAN13 transfer
to ISBN



turn off EAN13 transfer
to ISBN



turn on EAN13 turn
on ISSN



turn off EAN13 turn
on ISSN



turn on EAN8



turn off EAN8



Transmit EAN8 check digit



not transmit EAN8
check digit



EAN8 hide system
digit



EAN8 not hide system
digit



turn on 5 bits extra-code



turn on 2 bits
extra-code



turn on 2 and 5 bits
extra-code



turn off extra-code



turn on code93



turn off code93



turn on 93code MOD47



turn off 93code MOD47



turn on code128



turn off code128



turn on codabar



turn off codabar



set codabar minimum
length to 4



turn on codabar start
and stop character



turn off codabar start
and stop character



turn on Interleaved 25



turn off Interleaved
25



set Interleaved 25
minimum length to 4



turn on Industrial
25 code



turn off Industrial
25 code



set Industrial 25 minimum
length to 3



turn on MSI code



turn off MSI code



set MSI minimum
length to 4



turn on Plessey code



turn off Plessey
code



set Plessey minimum
length to 3



turn on code11



turn off code11



Code11 minimum
length to 4



Code11 automatical
CK check



Code11 C check



Code11 CK check



turn on Matrix 25 Code



turn off Matrix 25
Code



set Matrix 25 Code
minimum length to 2



set Matrix 25 Code
minimum length to 3



turn on Postal
25 Code



turn off Postal 25
Code



Set Postal 25 Code
minimum length to 5



Set Postal 25 Code
minimum length to 7



turn on aviation
25 code



turn off aviation
25 code



Set aviation 25 Code
minimum length to 7



all EAN transfer to ISSN



turn off compulsory
transfer EAN to ISSN



all EAN transfer to
ISBN



turn off compulsory
transfer EAN to ISBN

Appendix A:



SOH



ETX



ENQ



BEL



TAB



VT



CR



SI



DC1



DC3



STX



EOT



ACK



Backspace



LF



FF



SO



DLE



DC2



DC4



NAK



ETB



EM



ESC



GS



US



!



#



%



SYN



CAN



SUB



FS



RS



SPACE



"



\$



&



“



”



+



-



/



1



3



5



7



(



*



,



.



0



2



4



6



8



9



;



=



?



A



C



E



G



I



K



:



<



>



@



B



D



F



H



J



L



M



O



Q



S



U



W



Y



[



]



N



P



R



T



V



X



Z



\



^



-



a



c



e



g



i



k



m



b



d



f



h



j



l



n



r



o



q



s



u



w



y



{



}



Delete



p



r



t



v



x



z



|



~



F1



F2



F4



F6



F8



F10



F12



HOME



Delete



Page down



F3



F5



F7



F9



F11



INSERT



Page up



END



Right arrow



Left arrow



Down arrow



Up arrow

