

Teltonika TAT140 Setting up using SMS commands

In the first instance I would recommend watching the ExploreVan Video and then using these instructions.

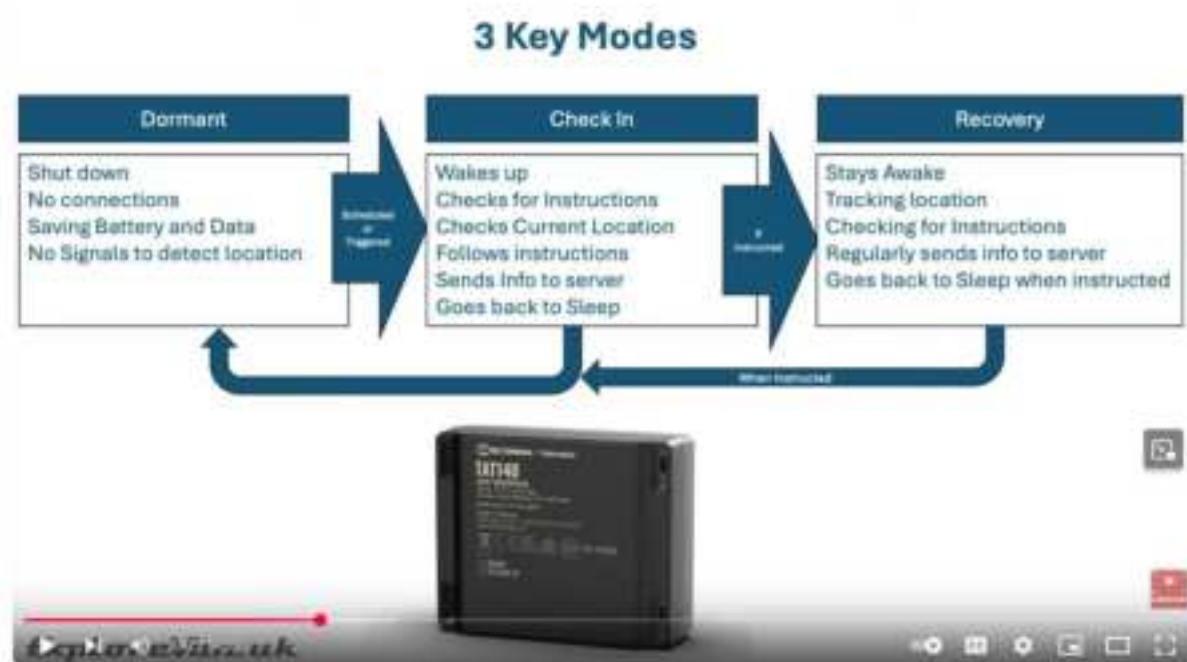
<https://www.youtube.com/watch?v=p9WWJHHBc2E>



- Battery powered (up to 3 years life)
- Replaceable Battery
- GNSS/2G/4G
- Passive / Dormant until needed
- Waterproof
- Compact
- Professional Solution
- Configurable for your needs
- Pick your own Data SIM
- Choice of Tracking App or SMS communication
- Set up by Windows App or SMS
- Expandable to include additional sensors

The TAT140 is designed to be dormant most of the time, which means it won't give away its location to a thief using electronic equipment to find the unit, only waking up for short periods of time.

There are lots of professional configurations but the purposes of this guide are for a simple set-up in your caravan, motorhome, campervan, car, or other vehicle. You simply add your own data SIM; it uses a very small amount of data so a simple PAYG solution with a little bit of credit will go a long way. You can use additional sensors too. This guide is for users that wish to set the tracker up with SMS commands, ideal for MAC users where the configurator tool won't work.



Useful Links:

Teltonika Wiki

<https://wiki.teltonika-gps.com/view/TAT140>

Easy Set-up guide by Louise Barrett (Windows PC)

<https://solwise.co.uk/downloads/files/Teltonika-TAT140-easy-set-up-guide.pdf>

User Manual

https://wiki.teltonika-gps.com/view/TAT140_Manual

Full list of Parameter Settings

https://wiki.teltonika-gps.com/view/TAT140_Parameter_list

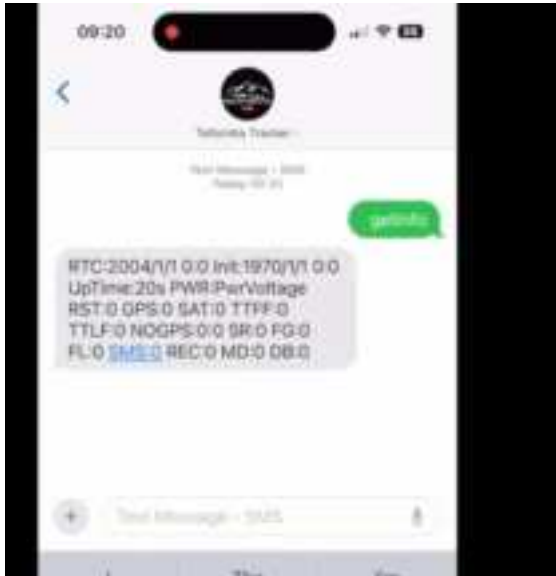
Full list of SMS Commands

https://wiki.teltonika-gps.com/view/TAT140_SMS/GPRS_Commands

Setup using SMS text messaging, without a computer

Initial set-up by SMS – Connecting the network

- Install SIM card, do this with the unit switched off. Once the SIM has been installed, turn the unit on and a green LED will start flashing. Ensure you have the SIM phone number saved in your phone contacts.
- Whilst the LED is flashing send a text to test the unit
<2 blank spaces followed by>getinfo



- Next you need to set the Username and Password
<2 spaces>setparam 3003:<username>;3004:<password> (in the example below e is the username and v is the password)

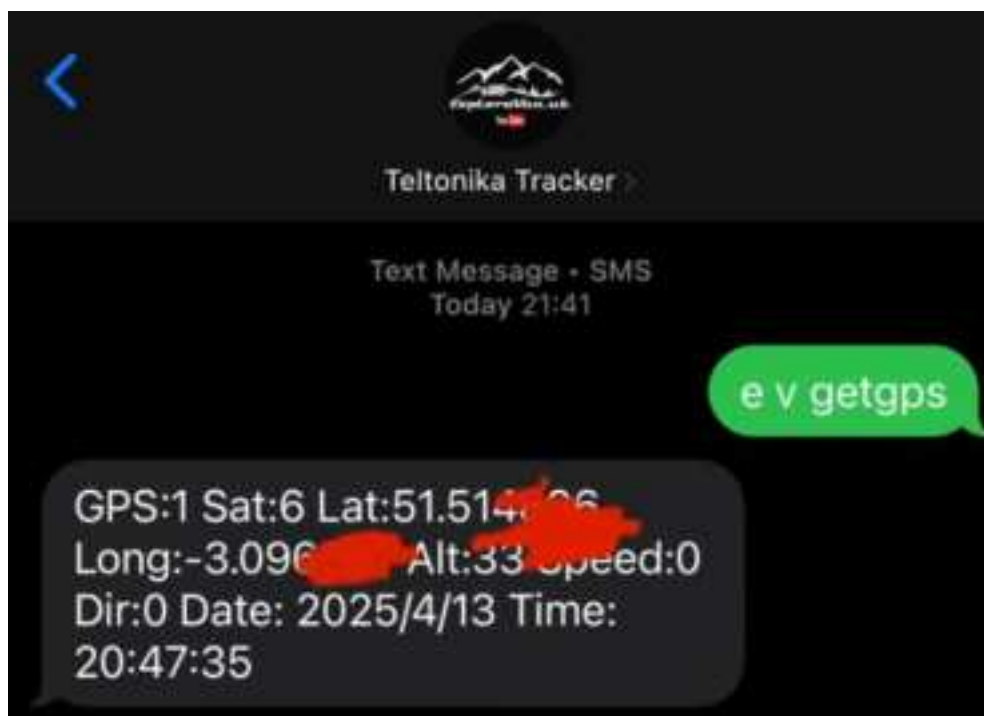


If the LED stops flashing you need to turn the unit off and back on again to wake it up.
Going forward you always need to include the username and password in your commands.

Getting the trackers location via SMS

To request the tracker to send its location you send your username and password along with getgps and when it wakes up it will send you its location

<username><password> getgps



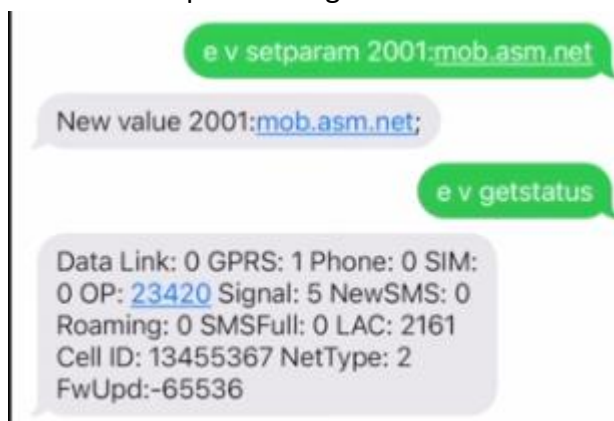
Setting the APN for your SIM

If you want to use online tracking you need to get the device connected to the internet. You will need to set the APN for your SIM.

- Set network APN – to connect to internet
<username><password>setparam 2001:<APN> (the example below is for a SMARTY SIM, you will need to include the APN for your provider)



- You can test this is working
<username><password>getstatus



Setting up the tracker to use with a tracking app

There are a number of options available, our tracker is using Ruhavik and Explorevan use the same service. Mike at Explorevan agreed it is easy to set up and has a range of subscriptions to suit most folks needs. Mike used the free option.

Set up an account - <https://ruhavik.com/en>

Single account for multiple applications

gps-trace.com

RUHAVIK
Create your Account

Email
info@explorevan.uk

☐ I agree with [Terms of use](#) and [Privacy policy](#)

Next

[Forgot password?](#)

Ruhavik will then provide you with the DNS Server Host and Port you need to set the tracker to connect to. Don't copy what you see below, you will be provided with your own settings.

Device Type	Teltonika TAT140	
ID		
DNS server Host	11249.flespi.gw	i
IP server Host	185.213.2.30	i
Port	20856	i

If the tracker has gone to sleep or you switched it off, turn it back on.

Set the DNS Server

To set the DNS Server host send an SMS with the DNS address, ensure you use the one that Ruhavik provide to you

<username><password>setparam 2004:<DNS Server>

e v setparam
2004:11249.flespi.gw

Set the Port Number

To set the Port send the next SMS with the Port details, again, ensure you the one that Ruhavik provide to you

<username><password>setparam 2005:<Port>

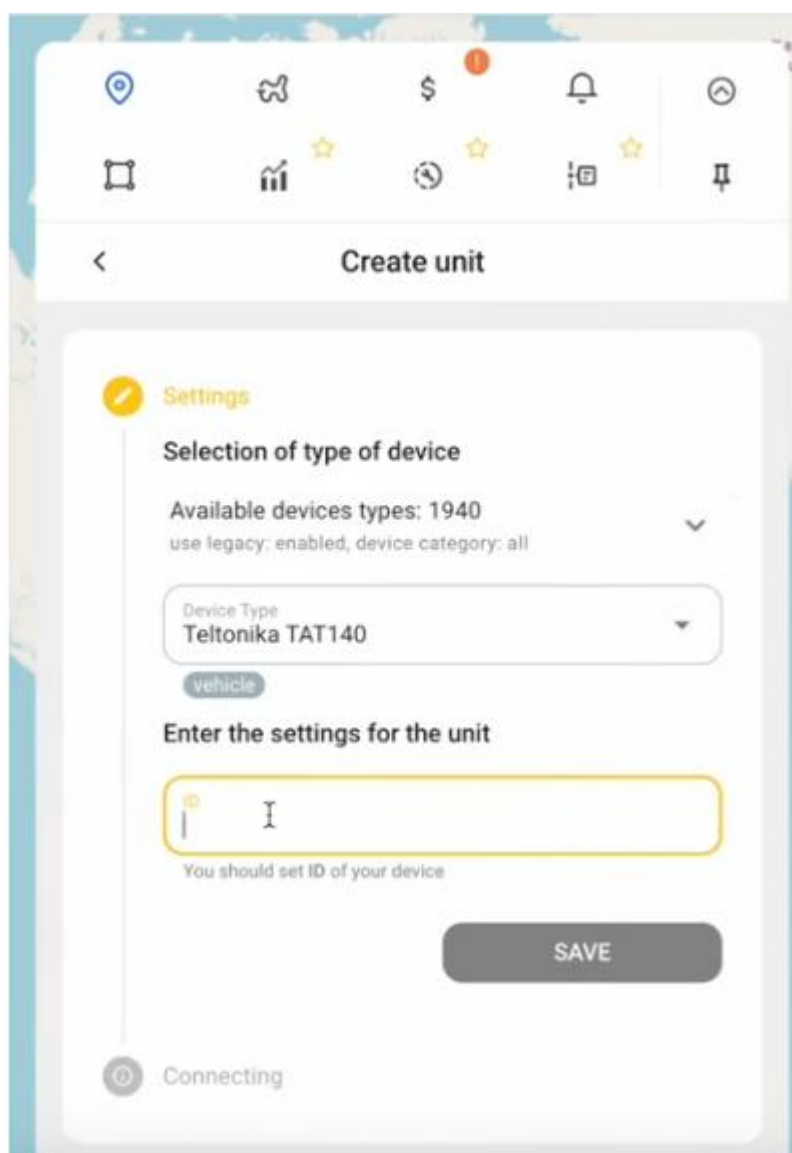
e v setparam 2005:20856

You should then receive a confirmation that both have been set



Add Tracker ID to Ruhavik App

You then set the ID number from your tracker in the Ruhavik app or via their website, it will then update to show the tracker location.



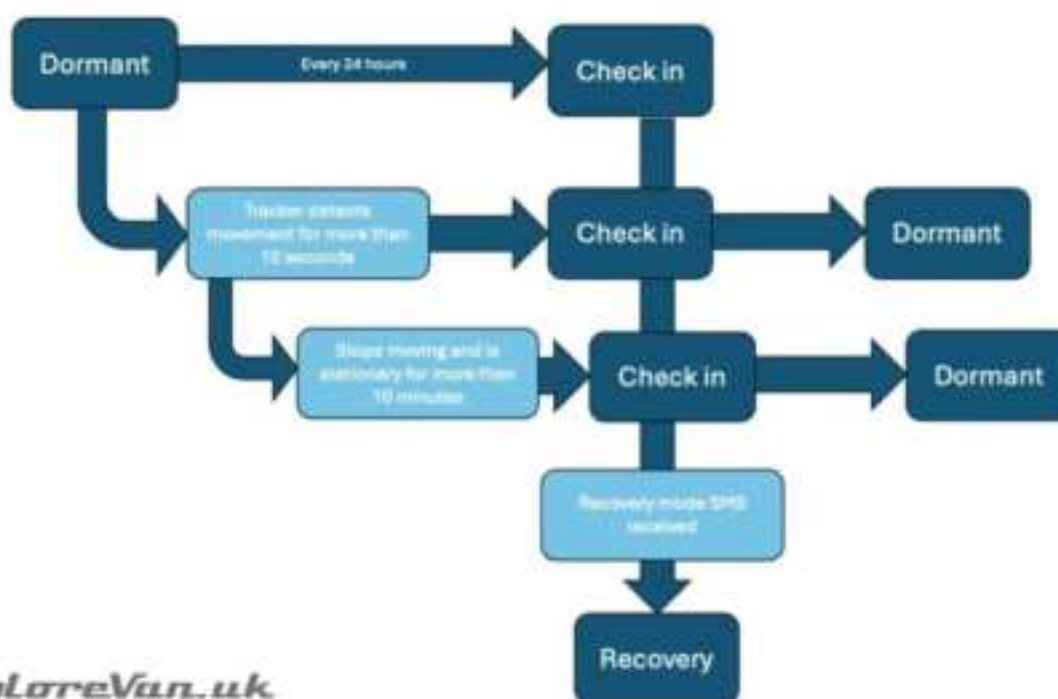
The free option of the app allows one tracker and one geofence plus a dynamic security fence called a security zone that you can switch on when you want. The additional subscriptions offer more functionality

but to be honest the free one will be enough for what most people need. You could consider the £0.99 option as this will give you two geofences, ideal if you work and live in places a bit further away from each other.

Going forward you can create various modes but it is worth noting the less it wakes up and updates its location the longer the battery life is preserved.

For the purposes of these instructions the plan is to check and report in once a day. Having said this, using the accelerometer if the unit detects motion for more than 10 seconds it will check in and then go back to sleep. If it is stationary after moving for more than 10 minutes it will check in again, unless we have told it to go into recovery mode when it would send its location regularly. The default is 180 seconds but you can set this to however many seconds you would like, Explorevan used 30 seconds.

Example use case



ExploreVan.uk

To create the above settings:

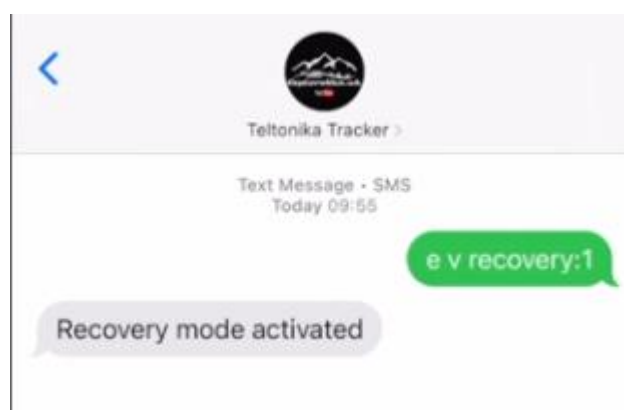
- Enable Periodic Tracking
<username><password> setparam 184:1
- Enable on Move Event Sending
<username><password> setparam 239:1
- Enable on Stop Event Sending
<username><password> setparam 237:1



Recovery Mode Command

<username><password> recovery:1

The next time the vehicle stops for more than 10 minutes the tracker will check in and the recovery mode will be activated. It will stay online and update the location regularly, every 180 seconds by default.



Once these settings are all in place you can live track the vehicle in the Ruhavik app as it moves, should it be stolen. The app updates the live tracking every 30 seconds.

To deactivate recovery mode:

<username><password>:0



Now you are good to go. If you find any settings additional to these that you think others would find useful please do get in touch and we can update the user guide.

support@solwise.co.uk