



CREAMi® DELUXE

RECIPE BOOK NOT INCLUDED

IMPORTANT SAFETY INSTRUCTIONS

PLEASE READ ALL INSTRUCTIONS BEFORE USE • FOR HOUSEHOLD USE ONLY

	Read and review instructions for operation and use.
	Indicates the presence of a hazard that can cause personal injury, death, or substantial property damage if the warning included with this symbol is ignored.
	For indoor and household use only.
When using electrical appliances, basic safety precautions should always be followed, including the following:	

WARNING

To reduce the risk of injury, fire, electrical shock or property damage, basic safety precautions must always be followed, including the following numbered warnings and subsequent instructions. Do not use appliance for other than intended use.

- Read all instructions prior to using the appliance and its accessories.
- Carefully observe and follow all warnings and instructions. This unit contains electrical connections and moving parts that potentially present risk to the user.
- Take inventory of all contents to ensure you have all parts needed to properly and safely operate your appliance.
- Turn the appliance **OFF**, then unplug the appliance from the outlet when not in use, before assembling or disassembling parts, and before cleaning. To unplug, grasp the plug by the body and pull from the outlet. **NEVER** unplug by grasping and pulling the flexible cord.
- Before use, wash all parts that may contact food. Follow washing instructions covered in this instruction manual.
- Before each use, inspect Deluxe Creamerizer™ Paddle for damage. If paddle is bent or damage is suspected, contact a service center.
- DO NOT** use this appliance outdoors. It is designed for indoor household use only.
- This appliance has a polarized plug (one prong is wider than the other). To reduce the risk of electric shock, this plug will fit in a polarized outlet only one way. If the plug does not fit fully in the outlet, reverse the plug. If it still does not fit, contact a qualified electrician. **DO NOT** modify the plug in any way.
- DO NOT** operate any appliance with a damaged cord or plug, or after the appliance malfunctions or is dropped or damaged in any manner. Contact a service center.
- This appliance has important markings on the plug. The entire supply cord is not suitable for replacement. If damaged, please contact a service center.
- Extension cords should **NOT** be used with this appliance.
- To protect against the risk of electric shock, **DO NOT** submerge the appliance or allow the power cord to contact any form of liquid.
- DO NOT** allow the cord to hang over the edges of tables or counters. The cord may become snagged and pull the appliance off the work surface.
- DO NOT** allow the unit or the cord to contact hot surfaces, including stoves and other heating appliances.
- ALWAYS** use the appliance on a dry and level surface.
- DO NOT** allow children to operate this appliance or use as a toy. Close supervision is necessary when any appliance is used near children.
- This appliance is **NOT** intended to be used by people with reduced physical, sensory, or mental capabilities, or lack of experience and knowledge, unless they have been given supervision or instruction concerning use of the appliance by a person responsible for their safety.
- ONLY** use attachments and accessories that are provided with the product or are recommended by SharkNinja. The use of attachments not recommended or sold by SharkNinja may cause fire, electric shock, or injury.
- NEVER** place the Deluxe Creamerizer™ Paddle on the motor base without it first being attached to the outer bowl lid and the lid being attached to the outer bowl.
- Keep hands, hair, and clothing out of the container when loading and operating.
- During operation and handling of the appliance, avoid contact with moving parts.
- DO NOT** fill containers past the **MAX FILL** lines.
- DO NOT** operate the appliance with an empty container.
- DO NOT** microwave the containers or accessories provided with the appliance, except the CREAMi® Deluxe Pint. The pint can be microwaved.
- DO NOT** microwave the pint for more than 8 minutes at a time. Wait until cooled before microwaving again.
- NEVER** leave the appliance unattended while in use.
- DO NOT** mix hot liquids. Doing so may result in pressure buildup and steam exposure that can pose a risk of the user being burned.
- DO NOT** process dry ingredients without adding liquid to the pint. It is not intended for dry blending.
- DO NOT** perform grinding operations.
- NEVER** operate the appliance without lids in place. **DO NOT** attempt to defeat the interlock mechanism. Ensure the container and lid are properly installed before operation.
- Before operation, ensure all utensils are removed from containers. Failure to remove utensils can cause containers to shatter and potentially result in personal injury and property damage.
- Keep hands and utensils out of containers while mixing to reduce the risk of severe personal injury or damage to the unit. A scraper may be used **ONLY** when the processor is not running.
- DO NOT** carry the unit by the handle of the outer bowl. Hold the unit by grasping both sides of the unit under the head.
- DO NOT** process hard, loose ingredients or ice. This appliance is not intended to process loose frozen fruit, a block of solid ice, or ice cubes.

35 DO NOT freeze the pint at an angle. Pints must be placed on a level surface in the freezer. Pints frozen at an angle should **NOT** be processed.

36 The maximum rating wattage can be achieved with the following recipe: Set the freezer to -16°C and let the freezer stabilize. Whisk 1 box of instant chocolate pudding powder (165 grams) with 3 cups of milk for 2 minutes. Pour base into an empty CREAMi® Deluxe Pint up to the MAX FILL line. Place the pint in the freezer for 17.5 hours. Process the base using the RE-SPIN program.

SAVE THESE INSTRUCTIONS

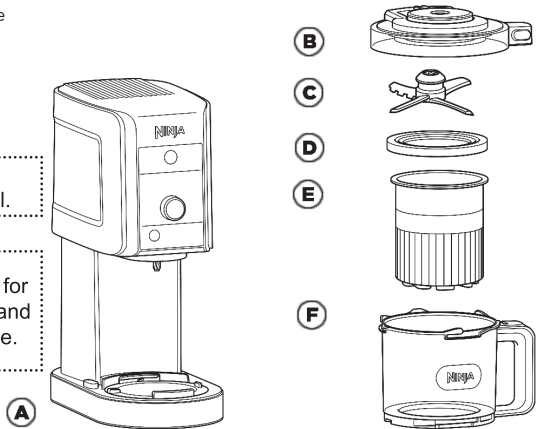
PARTS

- A** Motor Base
(attached power cord not shown)
- B** Outer Bowl Lid
- C** Deluxe Creamerizer™ Paddle
- D** CREAMi® Deluxe Lid
- E** REAMi Deluxe Pint
- F** Outer Bowl

NOTE: Unit color, number of pints, and programs may vary by model.

Accessories may vary depending on the model.

The image shown here is for illustrative purposes only and may be subject to change.



BEFORE FIRST USE

IMPORTANT: Review all warnings before proceeding.

NOTE: All attachments are BPA free. Accessories are top-rack dishwasher safe and should **NOT** be cleaned with a heated dry cycle. Ensure the paddle, pint, outer bowl, and lids are all separated before placing in the dishwasher.

DID YOU KNOW?

You can use the outer bowl to carry the CREAMi Deluxe Pint after removing it from the freezer.

- Remove all packaging materials from the unit.
- Wash containers, lids, and paddle in warm, soapy water. Use a dishwashing utensil with a handle to clean the paddle.
- Thoroughly rinse and air-dry all parts.
- Wipe control panel with a soft cloth.

FEATURES

Use the Power button to turn the unit on or off.

INSTALL LIGHT

Light will illuminate when unit is not fully assembled for use. If light is blinking, ensure the bowl is properly installed. If light is solid, check that the paddle is installed.

COUNTDOWN TIMER

Counts down remaining program time.

ENJOY LIGHT

When processing is complete, light will illuminate.

PROCESSING MODE

Select processing mode prior to selecting a program. To process the whole Deluxe Pint, press FULL. To process just the top half, press TOP. To process the remaining half of the Deluxe Pint, press BOTTOM.

NOTE: TOP and BOTTOM modes are not available with DRINKABLE programs.

ONE-TOUCH PROGRAMS

Each One-Touch Program is intelligently designed to whip up delicious creations. Programs vary in length and speed depending on the optimal settings to get perfectly creamy results for that type of recipe.

NOTE: To stop an active program, press the dial again.

NOTE: In order to ensure the highest possible standard for refurbished items, all units are thoroughly inspected as part of the process. For this item, water may be used during the refurbishing process and so; you may notice some condensation in the water reservoir. It is recommended to rinse the water reservoir with fresh water prior to its first use.

TECHNICAL SPECIFICATIONS

Voltage: 120V~, 60Hz

SCOOPABLE PROGRAMS ICE CREAM

Designed for traditionally indulgent recipes. Great for turning dairy and dairy-alternative recipes into thick, creamy, and scoopable ice creams.

LITE ICE CREAM

Designed for health-conscious consumers to make ice creams that are low in sugar or fat or use sugar substitutes. Choose when processing keto or paleo recipes.

SORBET

Transform fruit-based recipes with high water and sugar content into creamy delights.

GELATO (not available on all models)

Creates custard bases for Italian-style ice cream.

FROZEN YOGURT

Easily transform your favorite store-bought yogurts into healthy, creamy frozen treats with the touch of a button. When making frozen yogurt, ensure you are using full-fat yogurt with added sugar. Do not process nonfat yogurt or yogurt with no added sugar in the unit.

MIX-IN

Designed to fold in pieces of candies, cookies, nuts, cereal, or frozen fruit to customize a just-processed base or store-bought treat.

NOTE: Mix-ins work best if they are added in the middle of the Deluxe Pint. After processing, use a spoon to create a 1 1/2-inch-wide hole that reaches the bottom of the processed portion of the Deluxe Pint. Add chopped or broken mix-ins to the hole and process again using the MIX-IN program.

RE-SPIN

Designed to ensure a smooth texture after running one of the preset programs. RE-SPIN is often needed when the base is very cold (below -7°F) and the texture is crumbly rather than creamy.

NOTE: Do not RE-SPIN before using the MIX-IN program.

FREEZING TIPS

- For best results, set your freezer between 9°F and -7°F. The CREAMi® Deluxe is designed to process bases within this range. If your freezer is within this range, your pint should reach the appropriate temperature.
- DO NOT** freeze the Deluxe Pint at angle. Place the Deluxe Pint on a level surface in the freezer.
- Upright freezers work best. A chest freezer is not recommended, as they tend to reach extremely cold temperatures.
- Freeze the base for at least 24 hours. While it may be frozen, the base needs to reach an even colder temperature before it can be processed.
- Make the most of your time by prepping several CREAMi Deluxe Pints at once. Keep these Deluxe Pints in your freezer to Creamify™ on demand whenever the craving strikes.

Don't want to wait 24 hours? Customize store-bought ice cream with mix-ins or make a milkshake. To customize store-bought ice cream, scoop the ice cream into a Deluxe Pint and skip to step 11a in the Using the Creami Delux section.

This is NOT a blender.

DO NOT process a solid block of ice or ice cubes.

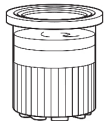
DO NOT make a smoothie or process hard, loose ingredients.

Fruit must be crushed to release its juice or combined with other ingredients and frozen before processing.

USING THE CREAMi DELUXE

IMPORTANT: Review all warnings before proceeding.

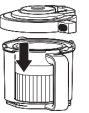
- Add ingredients to the CREAMi Deluxe Pint. **DO NOT** add ingredients past the MAX FILL line. For recipe inspiration, choose from hundreds of recipes at ninjacreami.com.



- If the recipe requires the ingredients to be frozen, snap the lid on the Deluxe Pint and freeze for at least 24 hours.

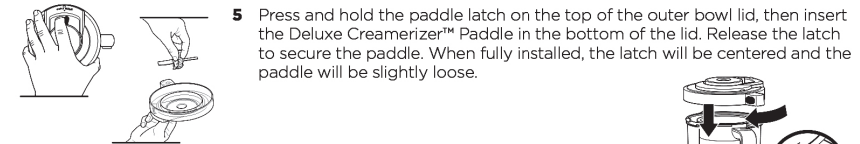
NOTE: The unit must be plugged in before assembly. The unit will not run if the outer bowl is installed before the unit is plugged in.

- Plug in the unit and place on a clean, dry, level surface such as a countertop or table.
- When the base is prepped or frozen, remove the Deluxe Pint lid and place the Deluxe Pint in the outer bowl.

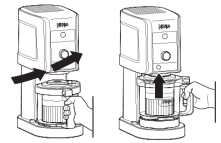


NOTE: DO NOT process the Deluxe Pint if ingredients have been frozen at an angle or if the Deluxe Pint has been scooped out of and then refrozen unevenly. Always smooth out the surface of a processed treat before refreezing. If frozen unevenly, put the Deluxe Pint in the fridge to allow the ingredients to melt. Then whisk to combine ingredients. Refreeze, ensuring to place the Deluxe Pint on a level surface in the freezer.





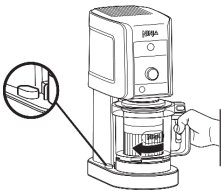
6 Position the tab of the lid just slightly to the right of the outer bowl handle so the lines on the lid and handle align. Rotate the lid clockwise to lock.



8 Press the power button to turn on the unit. If the outer bowl is properly installed, the control panel will illuminate and the unit will be ready for use. Press TOP, FULL, or BOTTOM, then use the dial to select the program that matches your base. The program will automatically stop when complete.



- NOTES:**
- TOP and BOTTOM modes are not available with DRINKABLE programs.
 - If the install light is illuminated, the unit is not fully assembled for use. If the light is blinking, ensure the bowl is properly installed. If the light is solid, check that the paddle is installed. Ensure to plug the unit in before installing the bowl.



10 To remove lid, press the lid unlock button and twist the lid counterclockwise.



- NOTE:** The unit does not allow One-Touch Programs to be run back to back. Between programs, lower the bowl and check the results before proceeding.



11a If adding mix-ins, use a spoon to create a 1 1/2-inch-wide hole that reaches the bottom of the processed portion of the Deluxe Pint. Add chopped or broken mix-ins to the hole in the Deluxe Pint and repeat steps 6-10 to process again using the same processing mode and the MIX-IN program.

MIX-IN TIPS

Add 1/4 cup of crushed candies, frozen fruits, chopped nuts, chocolate pieces, and more. When adding several different types of mix-ins, do not exceed 1/4 cup in total. Adjust the quantity of mix-ins to taste, ensuring the outer bowl lid can still comfortably close over the Deluxe Pint.

Hard mix-ins will remain intact.

Mix-ins like chocolate, candy, and nuts will not be broken down during the MIX-IN program. Use mini chocolate chips and candies or pre-chopped ingredients.

Soft mix-ins will get broken down. Mix-ins like cereal, cookies, and frozen fruit will end up smaller after the MIX-IN program. Use bigger pieces of soft ingredients.

For ice cream and gelato, **fresh fruit, sauces, and spreads are NOT recommended** as mix-ins. Adding fresh fruit, fudge, and caramel sauces will water down your treat. Chocolate hazelnut spread and nut butters also do not mix well. Frozen fruit or chocolate/caramel shell toppings are recommended.

11b If not adding mix-ins, RE-SPIN can be used on a crumbly or powdery Deluxe Pint to make it more creamy. RE-SPIN is often needed for very cold bases. If the treat is smooth and scoopable, go to step 12. If the base is crumbly or powdery, repeat steps 6-10 to process again using the RE-SPIN program.

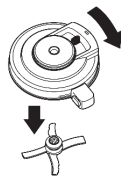


RE-SPIN

NOTE: Do not RE-SPIN before using the MIX-IN program.



12 Lift the Deluxe Pint out of the outer bowl and enjoy!



13 Rinse the outer bowl lid to remove any sticky residue or pieces wedged in the Deluxe Creamerizer™ Paddle. Then detach the paddle by pressing the latch on the top of the outer bowl lid. For easy cleanup, release paddle directly into the sink.

14 Turn the unit off by pressing the power button. Unplug the unit when finished. Refer to the Care & Maintenance section for cleaning and storage instructions.



15 Didn't finish your Deluxe Pint? Flatten the top of your frozen treat with a spoon or spatula before refreezing. If the treat is hard after refreezing, process it again on the program used to make it. If it's soft, just scoop and enjoy it. Before reprocessing a drinkable leftover, add a 4 oz. pour-in of your choosing for FROZEN DRINK or a 6 oz. pour-in of your choosing for SLUSHI or CREAMICCINO.

NOTE: If your treat contains mix-ins, processing again will further crush your mix-ins and create a new flavor.

CARE & MAINTENANCE

CLEANING

NOTE: Before cleaning, ensure to remove the Deluxe Creamerizer™ Paddle from the outer bowl lid by rinsing the lid and then pressing the paddle latch.

Hand-Washing

Wash containers, lids, and paddle in warm, soapy water. Use a dishwashing utensil with a handle to clean the paddle. Thoroughly rinse and air-dry all parts.

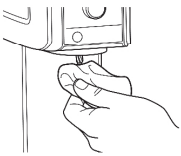
Dishwasher

Containers, lids, and paddle are top-rack dishwasher safe. Ensure the paddle, Deluxe Pint, outer bowl, and lids are all separated before placing them in the dishwasher.

Outer Bowl Lid

Remove paddle before cleaning the outer bowl lid as ingredients may be stuck under the paddle. Then run warm water through the paddle release lever and out the drain holes on either side. Position the lid with the lever side down to fully drain the lid.

Remove the dark grey rubber lip seal wrapped around the middle of the underside of the outer bowl lid. Then hand-wash the lid and seal with warm, soapy water or place in the dishwasher.



Motor Base

Unplug the motor base before cleaning. Wipe motor base with a clean, damp cloth. Do not use abrasive cloths, pads, or brushes to clean the base.

Using a damp cloth, wipe the spindle below the control panel after each use.



If liquid is trapped between the motor base and the platform, raise the platform to clean. Place the outer bowl onto the motor base with the handle centered below the control panel. Twist the handle to the right to raise the platform. Then use a damp cloth to clean the area between the base and the raised platform.

STORING

For cord storage, wrap the cord with the hook-and-loop fastener near the back of the motor base. **DO NOT** wrap the cord around the bottom of the base for storage.

Do store any remaining attachments alongside the unit or in a cabinet where they will not be damaged or create a hazard.

RESETTING THE MOTOR

This unit features a unique safety system that prevents damage to the motor and drive system should you inadvertently overload it. If the unit is overloaded, the motor will be temporarily disabled. Should this occur, follow the reset procedure below.

- 1 Unplug the unit from the electrical outlet.
- 2 Allow the unit to cool for approximately 15 minutes.
- 3 Remove the outer bowl lid and paddle. Ensure no ingredients are jamming the lid assembly.

IMPORTANT: Ensure that maximum capacities are not exceeded. This is the most typical cause of appliance overload.

NOTE: DO NOT process a solid block of ice or ice cubes. **DO NOT** make a smoothie or process hard, loose ingredients. Fruit must be crushed to release its juice or combined with other ingredients and frozen before processing.

TROUBLESHOOTING GUIDE

WARNING: To reduce the risk of shock and unintended operation, turn power off and unplug unit before troubleshooting.

Unit moves on counter while processing.

- Make sure the countertop and the feet of the unit are clean and dry.

Frozen treat is liquid, not solid, after processing.

- If a base is soft after processing, put the CREAMi® Deluxe Pint back in the freezer for several hours or until desired consistency is reached.
- For best results, freeze base for at least 24 hours and process immediately after removing from the freezer. If the processed base is still not firm, try setting your freezer to a colder temperature. The unit is designed to process bases between 9°F and -7°F.
- The proportion of fat or sugar may be too high in your recipe. Consult the inspiration guide and use the included recipes as a guide for best results.

Frozen treat looks crumbly or powdery after processing.

- When bases are frozen in very cold freezers, they may come out crumbly. After running a One-Touch Program, use the RE-SPIN program to make your frozen treat smoother and creamier.
- The proportion of fat or sugar may be too low in your recipe. Consult the inspiration guide and use the included recipes as a guide for best results.

One-Touch Programs will not illuminate.

- Ensure the unit is plugged into a working outlet before installing the outer bowl. Then press the power button to select a program.
- Make sure the unit is fully assembled for use. If the unit is powered on and the outer bowl is not installed correctly, the install light will flash. If the paddle is not installed correctly, the install light will illuminate. All One-Touch Programs will be available when the unit is fully assembled and a processing mode has been selected.

- The unit does not allow you to run programs back to back. Between programs, lower the bowl and check the results before raising the bowl and running another program.

Install light is flashing.

- The outer bowl is not installed or is not installed correctly. Re-install the paddle into the outer bowl lid and the lid onto the outer bowl, then re-install the outer bowl onto the motor base until it clicks into place.

Install light is steadily illuminated.

- The outer bowl is correctly installed, but the paddle is missing or has been incorrectly installed. Lower the platform by pressing and holding the bowl release button on the left of the motor base while twisting the outer bowl handle toward the center. Be sure the paddle is installed in the lid.

The display shows E1 or E2 and the program lights are flashing.

- The motor has overloaded and needs to be reset. Unplug the unit, remove the bowl, and allow the motor base to cool for approximately 15 minutes before running again.
- Remove the outer bowl lid and paddle. Ensure no ingredients are jamming the lid assembly.
- The ingredients you are trying to process might be too dense. Make sure you are using ingredients with sugar or fat. Follow the recipes in the inspiration guide for best results.
- Your freezer might be very cold. The unit is designed to process bases between 9°F and -7°F. Change the setting of your freezer, move the Deluxe Pint to the front of your freezer, or leave the Deluxe Pint out on the counter for a few minutes before processing.
- **DO NOT** process a solid block of ice, ice cubes, or hard, loose ingredients.

The display shows E3 and the program lights are flashing.

- There was an error and the program did not successfully complete. First, unplug the unit. Check that the paddle is installed properly, then plug the unit back in and try running the program again.

Deluxe Pint froze at an angle in the freezer.

- For best results, do not process a Deluxe Pint that has been frozen at an angle or scooped out of and then refrozen unevenly.
- Always smooth out the surface of your ice cream before refreezing. If the Deluxe Pint is frozen unevenly, put the Deluxe Pint in the fridge to allow the ingredients to melt. Then whisk to make sure the ingredients are combined. Refreeze, making sure to place the Deluxe Pint on a level surface in your freezer.

Outer bowl will not release from motor base after processing.

- Wait approximately 2 minutes, then try to remove the outer bowl again. Hold the release button on the left side of the motor base and twist bowl handle clockwise to remove. This may take some force.
- To prevent the outer bowl from getting stuck on the motor base, make sure the cavity on top of the paddle is fully dry before processing. Also, when processing different bases consecutively, make sure to rinse and dry the paddle after processing each base. With some recipes, water may freeze between the paddle and motor base causing them to stick together; drying the paddle between runs will prevent this.

Inside of CREAMi Deluxe Pint is scratched.

- Light scratching of the Deluxe Pint is normal after regular use. To keep the Deluxe Pint from scratching, prep ingredients in a separate bowl and avoid aggressive use of metal utensils in the Deluxe Pint. Clean with soft, nonabrasive cloths.

REFURBISHED PRODUCT LIMITED NINETY DAYS WARRANTY

The **Refurbished Product Service Center** offers the following WARRANTY to the ORIGINAL purchaser of a product which we have refurbished.

This product that has been refurbished is warranted against any electronic or mechanical defects for a period of NINETY DAYS from the date of the original purchase by the consumer. Since this unit was sold as a refurbished item, the warranty does not apply to any cosmetic appearance items such as scratches. Should a defect occur, the **Refurbished Product Service Center** will repair or, at its option, replace defective unit/parts with new or rebuilt materials without charge for either parts or labor. Replacement unit/parts will be warranted for the remaining portion of the original warranty period.

This warranty does not cover installation or damage from accident, misuse, abuse, improper wiring, incorrect voltage, operating the unit against the instructions in the owner's manual or any product which has been opened, altered, or tampered with.

This warranty does not cover costs for removal and or installation of the unit for repair. Under no circumstances shall the service center be liable for any special, incidental or consequential damages or for any other expenses incurred by reason of use or sale of this product. This warranty is in lieu of any other warranties expressed or implied warranty of merchantability of fitness for particular use or otherwise.

This warranty gives the consumer specific legal rights and they may also have other rights which vary from State to State. Some States do not follow the exclusion or limitation of incidental or consequential damages, hence the above exclusion and limitations may not apply.

Refurbished Product Service Center

9043 Siempre Viva Rd Suite 110/120, San Diego CA, 92154

WARRANTY REPAIR INFORMATION

If you need service on your unit and this product requires repair during the 90 days warranty period; please go to **www.ConsumerServiceRefurbish.com** or call the **Refurbished Product Service Center** at 562-946-3531 to obtain the required return authorization (RA) number. Pack the unit properly (the original carton is ideal for this purpose) along with a copy of your purchase receipt and a letter describing the problem. Send the unit freight prepaid and insured to:

Refurbished Product Service Center,

Att: Customer Service Department 9043 Siempre Viva Rd Suite 110/120, San Diego CA, 92154

Your unit will be promptly repaired and returned to you.

We will refuse to accept delivery of the returned unit unless the assigned RA number appears on the outside of the shipping carton.

Owner's Information

(Keep for your permanent records)

NAME: _____

ADDRESS: _____

CITY: _____ STATE: _____ ZIP CODE: _____

PHONE: _____ E-MAIL: _____

MODEL: _____ SERIAL NO.: _____

PRINTED IN MEXICO / SC: 01-08-2025
ELBRD:J.E. / TAB / SHNMDL: CN501CO_B
OBPN: CN501CO_IB_MP_Mv4_230425

814100185



Please make sure to read the enclosed safety instructions prior to using your unit.

NINJA CREAMi DELUXE

Quick start guide & get started recipes



Outer bowl lid
locks Creamerizer Paddle in place.



Deluxe Creamerizer™ Paddle
Dual functioning paddle finely shaves and mixes frozen ingredients into the creamiest treats.



CREAMi® Deluxe Pints & Lids
BPA-free Deluxe Pints and lids for making and storing CREAMi treats.



Outer bowl
securely holds container in place during processing.

NOTE: Unit color, number of Deluxe Pints, and programs may vary by model.

RECIPE BOOK NOT INCLUDED

Assembly & Processing



1. Plug in unit first

Unit will not run if outer bowl is installed before unit is plugged in.



2. Install Deluxe Pint

Remove lid from Deluxe Pints and check that ingredients have not been frozen at an angle. Place Deluxe Pint with frozen base in outer bowl.



3. Install Creamerizer™ Paddle

Press and hold paddle latch on top of outer bowl lid, then insert paddle in bottom of lid. Release latch to secure paddle.

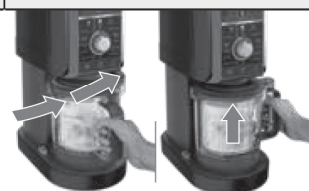


4. Install lid

Position tab of lid just slightly to right of outer bowl handle so lines on lid and handle align. Rotate lid clockwise to lock.

NOTE

If control panel will not illuminate, ensure unit is properly assembled. See troubleshooting section of the safety instructions if install light is illuminated.



5. Install outer bowl

After plugging in unit, place outer bowl on base with handle centered on unit. Twist handle to the right to raise platform and lock bowl in place (signaled by a click).



6. Select processing mode & program

Press Power. Press a processing mode (TOP, FULL, or BOTTOM), then turn dial to select a program and press dial to begin processing.



7. Remove bowl

When program is complete, hold release button on left of motor base and twist bowl handle clockwise, then pull away from unit to remove.

NOTE

TOP and BOTTOM processing zones are only available with SCOOPABLE programs.

OPTIONAL PROCESSING



8. Remove lid

Press the lid unlock button and twist to remove lid.



MIX-IN

Use a spoon to create a 1 1/2-inch wide hole that reaches the bottom of the processed ingredients. Add chopped or broken mix-ins to the hole. Select the same processing mode, then select MIX-IN.



RE-SPIN

9. If not adding mix-ins, RE-SPIN can be used on a crumbly or powdery output to make it creamy. RE-SPIN is often needed for very cold bases. Do not RE-SPIN before using MIX-IN program. Select the mode prior to selecting RE-SPIN.

• Accessory type and quantity may vary depending on the model.

Disassembly & Cleaning



Remove Deluxe Pint & paddle

Lift pint out of outer bowl.

Rinse outer bowl lid to remove any sticky residue or pieces wedged in the paddle.

Remove paddle by pressing paddle latch on top of lid.

All parts are top-rack dishwasher safe and can also be hand-washed.

Fruit Punch Slushi

PREP: 3 minutes | **FREEZE:** 24 hours | **PROGRAM TIME:** 5 minutes | **MAKES:** 2 servings

INGREDIENTS

For Freezing

1/2 cup fruit punch powdered drink mix

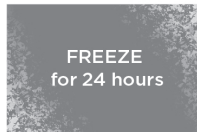
1 3/4 cup (14 ounces) warm water

DIRECTIONS

For Freezing



Place the fruit punch powder into an empty CREAMi® Deluxe Pint. Pour the warm water into the pint up to the **DRINKABLE FREEZE FILL** line.



Combine mixture until the drink powder is completely dissolved. Place storage lid on Deluxe Pint and **freeze for 24 hours**.

For Processing

Pour-in: water, alcohol, or juice

For Processing



Remove Deluxe Pint from freezer and remove lid.

Add pour-in to DRINKABLE POUR-IN line. Refer to previous pages for Assembly & Processing instructions.



Press **FULL**, then use the dial to select **SLUSHI**.

When processing is complete, transfer slushi to a glass and serve immediately.

TIP If your pour-in contains alcohol, select **FROZEN DRINK**.

NOTE



PREFER MORE SIPPABLE? If you prefer a thinner frozen drink after processing, simply add 2-4 additional tablespoons of your desired pour-in, then select **RE-SPIN**.

NOTE: In order to ensure the highest possible standard for refurbished items, all units are thoroughly inspected as part of the process. For this item, water may be used during the refurbishing process and so; you may notice some condensation in the water reservoir. It is recommended to rinse the water reservoir with fresh water prior to its first use.

Perfectly Personalized Ice Cream

PREP: 5-10 minutes | **FREEZE:** 24 hours | **PROGRAM TIME:** 2 minutes | **MAKES:** 6 servings

INGREDIENTS

1 1/2 tablespoons (3/4 ounce) cream cheese

1/2 cup granulated sugar

Flavoring: 1 1/2 teaspoons extract of choice
OR 3 tablespoons cocoa powder

1 cup plus 2 tablespoons heavy cream

1 1/2 cups whole milk

1/3 cup of your favorite mix-ins (optional)

PICK YOUR FLAVOR



Vanilla extract



Mint extract



Almond extract



Fruit extract



Cocoa powder

MAKE IT DAIRY-FREE Use vegan cream cheese for cream cheese, unsweetened coconut cream for heavy cream, and unsweetened oat milk for milk. Whisk the coconut cream until smooth, then add the remaining ingredients.



Microwave cream cheese for 10 seconds.

Add sugar and flavor, then whisk the mixture until it looks like frosting.



Slowly mix in heavy cream and milk until sugar is dissolved.



Pour base into CREAMi® Deluxe Pint. Place storage lid on Deluxe Pint and **freeze for 24 hours**.



Remove lid from frozen Deluxe Pint. Refer to previous page for Assembly & Processing instructions.

Select processing mode (FULL, TOP, or BOTTOM), then select ICE CREAM.

PICK YOUR MIX-INS TO ADD A PERSONAL TOUCH

Prepare 1/3 cup of mix-ins, which can include your favorite crushed candies, frozen fruits, chopped nuts, chocolate pieces, and more.



With a spoon, create a 1 1/2-inch wide hole that reaches the bottom of the processed ingredients.

Add mix-ins to the hole. Select the mode previously processed, then select the **MIX-IN** program.



NOTE

Make two flavors from one base.

• The image shown here is for illustrative purposes only and may be subject to change.

© 2023 SharkNinja Operating LLC. CREAMi and NINJA are registered trademarks of SharkNinja Operating LLC. CREAMERIZER is a trademark of SharkNinja Operating LLC.

PRINTED IN MEXICO / SC: 12-06-2024
SHNMDL:CN501CO_B / ELBRD:J.E._2P
OBPN:CN501CO_QSG_MP_230421

