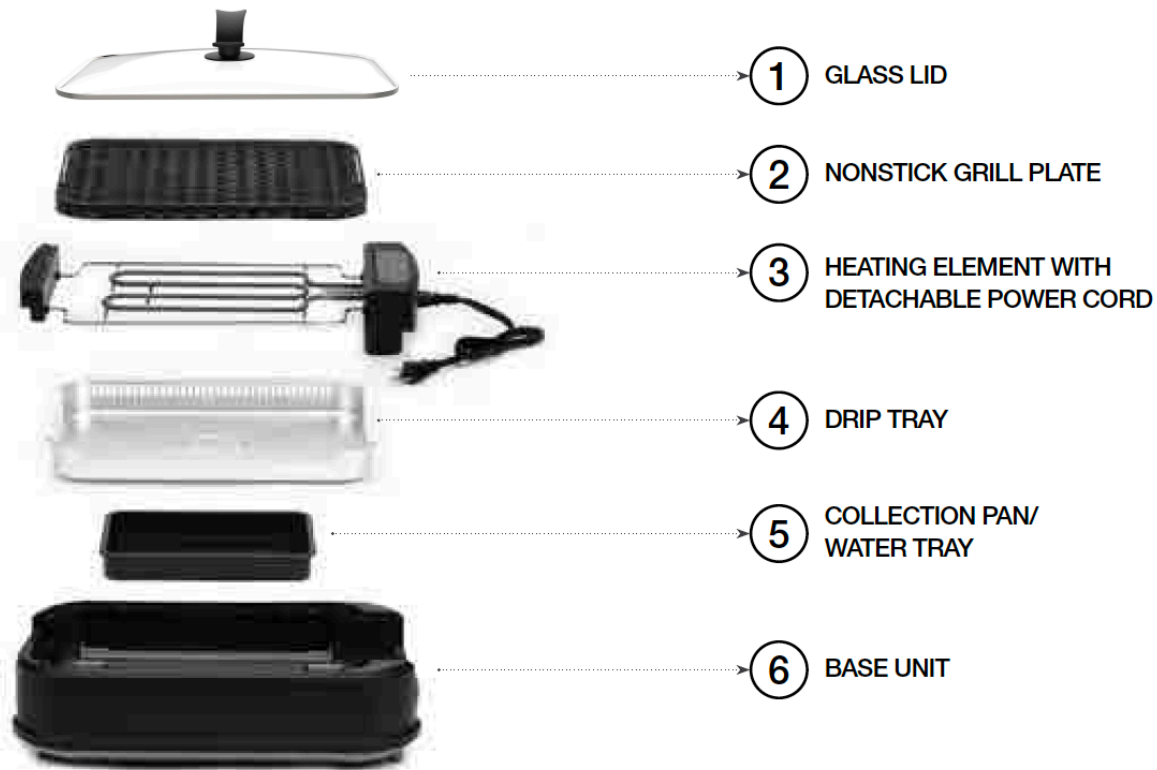


Tabletop Grill with Fan



INSTRUCTIONS MODEL CCSML2

PARTS IDENTIFICATION

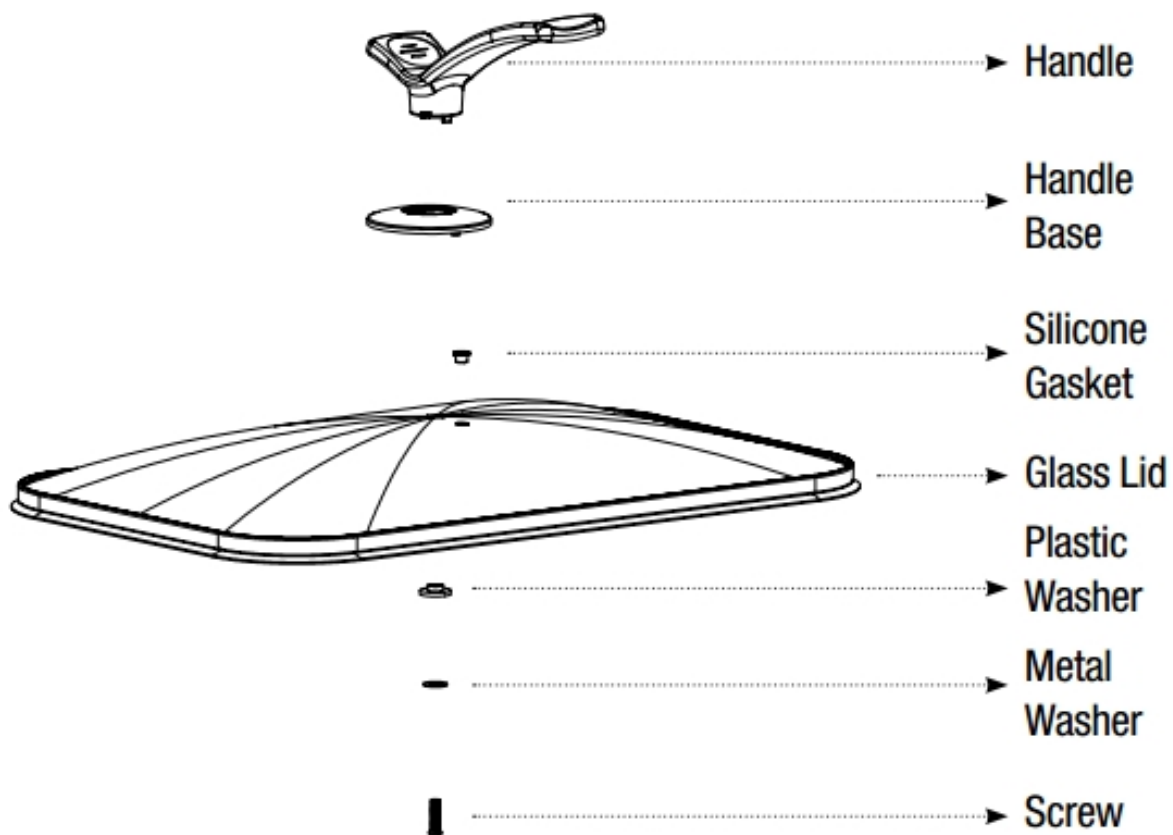


HOW TO ASSEMBLE THE GRILL

1. Place the collection pan/water tray (4) then the drip tray (3) inside the base(5).
2. Place the heating element(2) over the drip tray (3).
3. Insert the grill plate(1) on top of the heating element(2).

HOW TO ASSEMBLE THE LID

1. Insert the Screw through the Metal Washer and then the Plastic Washer.
2. Insert the Screw and the washers through the bottom of the Glass Lid.
3. Place the Silicone Gasket on the threaded end of the Screw on the top of the Glass Lid.
4. Place the Handle Base over the Silicone Gasket.
5. Thread the Handle onto the Screw and tighten using a Phillips-head screwdriver.



IMPORTANT SAFEGUARDS

When using electrical appliances, basic safety precautions should be followed:

- Read all the instructions.
- Do not use the unit for anything other than intended use.
- Never immerse the unit fully into water or other liquid to avoid damage to the unit.
- Do not leave the unit unattended during operation.
- Do not place the unit on or near gas or electric cooktops to avoid damages.
- Make sure the unit is unplugged before moving the unit.
- Always insert the cord to the unit first, then plug cord into a wall outlet.
- Place the unit on a level surface away from walls and cupboards. Do not let the cord hang over the edge of a table or counter or touch hot surfaces.
- Close supervision is necessary when any appliance is used by or near children.
- Do not move the appliance during cooking.
- If you are using plastic utensils, do not leave them inside the appliance when hot.
- Do not use sharp utensils in the unit to avoid damaging the coating.
- Do not touch hot surfaces. Use handles with dry pot holders or oven mitts to move the grill.
- Do not use the unit near or under surfaces that are heat sensitive or those that may be damaged by steam.
- Extreme caution must be used since the unit contains hot food, hot oils and liquids.
- Do not use the unit with an extension cord, always plug into a wall outlet.

- Unplug from outlet when not in use and before cleaning. Allow to cool before cleaning.
- To prevent electrical shock do not immerse the cord in water or other liquid.
- Do not operate unit with a damaged cord or plug or after the unit malfunctions or has been damaged in any manner. Do not place the cord underneath the unit at any time.
- A short power supply cord is supplied to reduce the risk of the cord becoming tangled or tripping over a long cord.
- If the plug does not fit fully into the outlet, reverse the plug. If it still does not fit, contact a qualified electrician. Do not attempt to modify the plug in any way.
- Do not use outdoors.
- **SAVE THESE INSTRUCTIONS.**

BEFORE FIRST USE

1. Remove all packaging materials. Locate all included parts before discarding the box.
2. Clean the unit and grill plate and lid with hot water, dishwashing liquid, and a non-abrasive sponge.
3. Wipe the inside and outside of the unit with a soft cloth.

USING THE APPLIANCE

1. Place unit on a level surface. Insert about two cups of water into the collection pan.
2. Insert the plug into the unit then plug cord into an electrical outlet. The power light will flash. Press the power button to set temperature.
3. Press the + or - to set desired temperature. The temperature ring will begin to flash and the unit will begin to heat.
4. The unit will need to preheat for 3-8 minutes, depending on the desired temperature setting. The temperature ring will turn solid when pre heating is complete. If faster heat up is desired put the lid on top of the unit.

Note: Do not preheat for more than the suggested time to avoid damage to the coating of the plates.

5. Place food on the unit. If desired press the fan button and place the lid on the unit to pull smoke away from yourself while cooking. Cook recipe as desired.
6. Once cooking is complete press the power button again to turn off the unit and the fan button to turn off the fan.

CLEANING

Clean after every use.

1. Press the power button to turn off the unit, unplug the unit and allow to cool completely.

Before cleaning the unit, disassemble all parts.

CAUTION: To prevent injury or electric shock, always remove the cord before cleaning. Do not immerse cord or heating element in water or other liquid to avoid damage.

2. Remove excess food and oil with a clean cloth. Clean the grill plate, heating element, lid, drip tray and collection pan with hot water, dishwashing liquid, and a non-abrasive sponge. Do not use detergent or abrasives as these may scratch the coating. Wipe the inside and outside of the unit with a clean cloth.

STORAGE

1. Unplug the cord.
2. Make sure all parts are clean and dry.

LIMITED ONE YEAR WARRANTY

This warranty covers all defects in workmanship or materials in the mechanical and electrical parts, arising under normal use and care in this product for a period of 12 months from the date of purchase provided you are able to present a valid proof-of-purchase. A valid proof-of-purchase is a receipt specifying item, date purchased, and cost of item. A gift receipt showing item and date of purchase is an acceptable proof-of-purchase. Product is intended for household use only. Any commercial use voids the warranty.

This warranty covers the original retail purchaser or gift recipient. During the applicable warranty period within normal household use, we will repair or replace, at our discretion, any mechanical or electrical part which proves defective, or replace unit with a comparable model. Shipping and handling costs are not included for warranty replacements and are the responsibility of the customer.

To obtain service under the terms of this warranty, send an email to customercare@alliedrich.net or call 312-526-3760 Monday- Friday (10AM-4PM CST). Please provide the model number listed on the bottom of this page when contacting us.

THIS LIMITED WARRANTY COVERS UNITS PURCHASED AND USED WITHIN THE UNITED STATES AND DOES NOT COVER:

- Damages from improper installation.
- Damages in transit.
- Defects other than manufacturing defects.
- Damages from misuse, abuse, accident, alteration, lack of proper care and maintenance, or incorrect current or voltage.
- Damage from service by other than authorized dealer or service center.
- Shipping and handling costs.
- This warranty gives you special legal rights and you may also have other rights to which you are entitled which may vary from state to state.

Manufacturer does not assume responsibility for loss or damage for return shipment. We recommend that you keep your original packaging should you require repair service. Before returning product please contact our customer care department for return authorization. When returning product for repair please include your full name, return address, and daytime phone number. Also include a brief description of the problem you are experiencing and a copy of your sales receipt or other proof of purchase in order to validate warranty status.

MODEL CCSML2