

# EnigmaBot

Model: EnigmaBot-M1  
FCC ID: 2AYDL-RS0002  
IC: 26754-RS0002  
CAN ICES-3 (B)/NMB-3(B).



## Federal Communications Commission (FCC) Compliance Statement for USA

This device complies with part 15 of the FCC rules. Operation is subject to the following two conditions: (1) This device may not cause harmful interference, and (2) this device must accept any interference received, including interference that may cause undesired operation.

FCC Caution: Any changes or modifications not expressly approved by the party responsible for compliance could void the user's authority to operate this equipment

### NOTE

This equipment has been tested and found to comply with the limits for a Class B digital device, pursuant to part 15 of the FCC Rules. These limits are designed to provide reasonable protection against harmful interference in a residential installation. This equipment generates, uses and can radiate radio frequency energy and, if not installed and used in accordance with the instructions, may cause harmful interference to radio communications. However, there is no guarantee that interference will not occur in a particular installation. If this equipment does cause harmful interference to radio or television reception, which can be determined by turning the equipment off and on, the user is encouraged to try to correct the interference by one or more of the following measures:

- Reorient or relocate the receiving antenna.
- Increase the separation between the equipment and receiver.
- Connect the equipment into an outlet on a circuit different from that to which the receiver is connected.
- Consult the dealer or an experienced radio/TV technician for help.

This equipment complies with FCC radiation exposure limits set forth for an uncontrolled environment.

Cet équipement est conforme aux limites d'exposition aux radiations de la IC définies pour un environnement non contrôlé.

## Industry Canada (IC) Compliance Statement for Canada

This device complies with Industry Canada license-exempt RSS standard (s). Operation is subject to the following two conditions: (1) this device may not cause interference, and (2) this device must accept any interference, including interference that may cause undesired operation of the device.

"Le présent appareil est conforme aux CNR d'Industrie Canada applicables aux appareils radio exempts de licence.

L'exploitation est autorisée aux deux conditions suivantes : (1) l'appareil ne doit pas produire de brouillage, et (2) l'utilisateur de l'appareil doit accepter tout brouillage radioélectrique subi, même si le brouillage est susceptible d'en compromettre le fonctionnement."

66 Studios Co., Ltd is not responsible for any changes or modifications not expressly approved by 66 Studios Co., Ltd. Such modifications could void the user's authority to operate the equipment.





ENIGMABOT

# INSTRUCTION MANUAL

## 1 GETTING STARTED



⚠ You need to assemble the Motor Module and Joypad Module before performing the action above

## 2 ACTIVATION AND PLAY

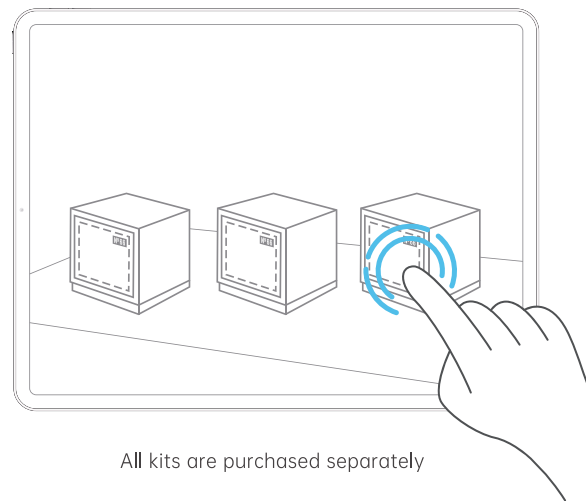


Download code



EnigmaBot

Scan the download code on the left, download **EnigmaBot** App, after following the instruction in the App for activation and pairing, you can choose an accessory set to assemble and start the game.



All kits are purchased separately

## SPECIFICATION

Motor Module



### ⚠ PRECAUTIONS

1. Keep the product away from children under 3 years;
2. Keep the product away from any hot and humid environment;
3. Keep the product away from places that may cause impacts to the product;
4. Do not stretch, twist the USB cable;
5. Do not connect any other power source than the designated USB power;
6. When using the product, keep it away from water;
7. For damage or malfunction, please contact the Customer Support, do not attempt to disassemble the EnigmaBot Power Module;
8. Stop using the product immediately when overheating or any other malfunction occurs during recharge;
9. Maintain the battery in the product every 3 months (Fully charge the battery);
10. Littering the product may harm the environment. Please recycle accordingly.

### CUSTOMER SUPPORT

E-mail: [support@studios66.com](mailto:support@studios66.com)  
website: [www.studios66.com](http://www.studios66.com)  
Company: 66 Studios  
Address: C2 301C Dongsheng Technology Park, Xixiaokou Rd. #66, Haidian District, Beijing 100192, China

FOR AFTER-SALES SERVICE, PLEASE REFER TO THE OFFICIAL WEBSITE:  
[WWW.STUDIOS66.COM](http://WWW.STUDIOS66.COM)

