

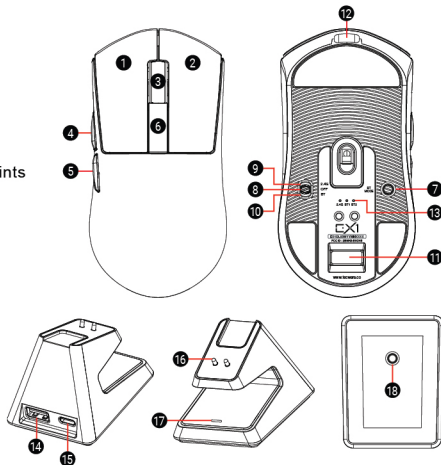


LIGHTWEIGHT GAMING MOUSE

Quick Start Guide

## Buttons & Functions

- |                             |                             |
|-----------------------------|-----------------------------|
| 1. Left Button              | 13. Indicator               |
| 2. Right Button             | 14. USB Port                |
| 3. Scroll Wheel             | 15. USB-C Port              |
| 4. Forward                  | 16. Magnetic Contact Points |
| 5. Backward                 | 17. RGB Touch Control       |
| 6. OLED Display DPI Button  | 18. RGB Control             |
| 7. Pairing / Mode Button    |                             |
| 8. Off                      |                             |
| 9. 2.4G Wireless            |                             |
| 10. Bluetooth (BT 5.0)      |                             |
| 11. 2.4GHz USB Dongle       |                             |
| 12. Wired & Charging Type-C |                             |



## Specifications

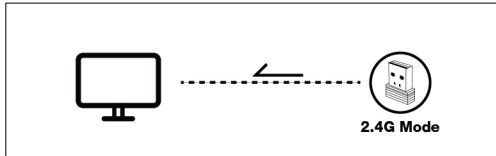
Model	: Tecware EX1
Optical Sensor	: PixArt PAW3395   50g Acceleration   650IPS Tracking Speed
Switch	: Huano Blue Shell Pink Dot Switches (80M Click Lifespan)
Encoder	: TTC Silver Scroll Wheel Encoder
Max DPI	: Up to 26000 DPI
Default DPI	: 800 / 1200 / 1600 / 3200 / 5600 / 26000 DPI
IPS	: 650 IPS Max Tracking Speed
Acceleration	: 50g (Max)
Polling Rate	: 125 / 250 / 500 / 1000Hz
Buttons	: 5 Programmable Button
Lighting	: 11 Pre-set Lighting Effects (Dock only)
Battery Capacity	: 300mAh

## Specifications

Cable	: 1.8m Paracord USB-C Cable
Interface	: USB
Dimensions	: Mouse: 121 (L) x 62 (W) x 38mm (H) Dock: 68 (L) x 54 (W) x 51mm (H)
Weight	: 59g

## 2.4GHz Connection

1. Toggle switch to 2.4G & Plug in the dongle to your device.
2. The mouse should auto connect to the dongle.
3. If mouse does not connect to the dongle:
  - Plug out the dongle.
  - Make sure switch is toggled to 2.4G
  - Press and hold MODE switch until you see "pairing" on the screen.
  - Plug in the dongle again and the mouse should pair automatically.



## **BT Connection**

1. Toggle switch to BT mode.
2. Press MODE switch to switch between BT Device (1 or 2).
3. Press and hold the MODE switch to go into pairing mode.
4. Select the mouse from the BT menu on your device.
5. BT Device Name 1: EX1 BT1  
BT Device Name 2: EX1 BT2

## **Wired Connection**

1. Switch can be at any position.
2. Connect the mouse with your device using the provided USB C to A cable.
3. LCD Screen should show "USB".

## **Package Contents**

- 1x Tecware EX1 Gaming Mouse
- 1x Charging Dock
- 1x 2.4GHz USB Dongle
- 1x USB-A to USB-C 1.8m Paracord Cable
- 1x Grip Tape Set
- 1x Extra Mouse Feet Set

## **System Requirements**

- PC system with USB port
- Windows XP / VISTA / 7 / 8 / 10

## **Software**

- To access additional features, please download the EX1 Software from **[www.tecware.co](http://www.tecware.co)**

## **Warranty**

- 1 Year. Please contact your local distributor for support.

## FCC Statement

1. This device complies with Part 15 of the FCC Rules. Operation is subject to the following two conditions:
  - (1) This device may not cause harmful interference, and
  - (2) This device must accept any interference received, including interference that may cause undesired operation.
2. Changes or modifications not expressly approved by the party responsible for compliance could void the user's authority to operate the equipment.

**NOTE:** *This equipment has been tested and found to comply with the limits for a Class B digital device, pursuant to Part 15 of the FCC Rules. These limits are designed to provide reasonable protection against harmful interference in a residential installation.*

This equipment generates uses and can radiate radio frequency energy and, if not installed and used in accordance with the instructions, may cause harmful interference to radio communications. However, there is no guarantee that interference will not occur in a particular installation. If this equipment does cause harmful interference to radio or television reception, which can be determined by turning the equipment off and on, the user is encouraged to try to correct the interference by one or more of the following measures:

- Reorient or relocate the receiving antenna.
- Increase the separation between the equipment and receiver.
- Connect the equipment into an outlet on a circuit different from that to which the receiver is connected.
- Consult the dealer or an experienced radio/TV technician for help.



## **RF Warning Statement:**

The device has been evaluated to meet general RF exposure requirement. The device can be used in portable exposure condition without restriction.

Remark:

FCC ID for mouse: 2BMK5-EXONE

FCC ID for dongle: 2BMK5-EXONE-D

T E C W A R E

[www.tecware.co](http://www.tecware.co)