

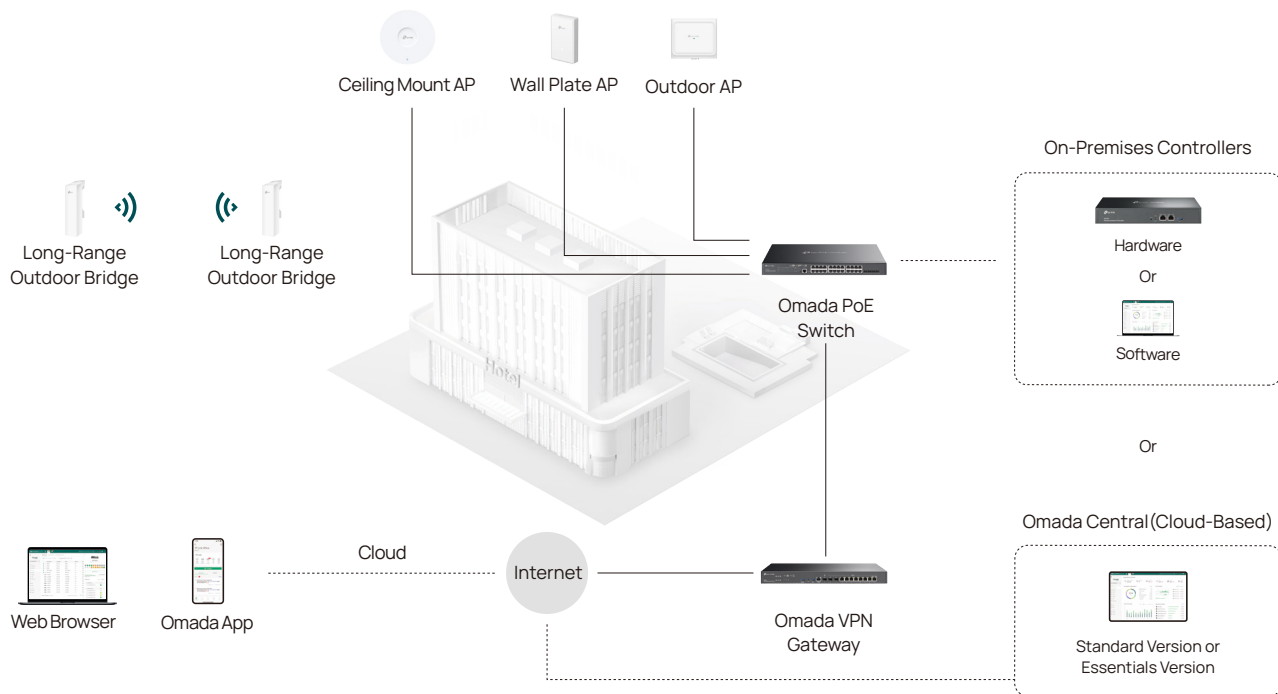
Professional **Networking** Solution for Businesses



- Cloud Management Systems, Access Points, Switches, and Gateways
- Hotels | Offices | MDUs | Restaurants | Stores | Schools | and more

A Reliable and Easy Cloud SDN Solution for Your Business

Omada's Software-Defined Networking (SDN) platform integrates network devices, including access points, switches, and gateways, providing 100% centralized cloud management – all controlled from a single interface.



Comprehensive Product Portfolio



Omada Controllers for Centralized Cloud Management

Omada Central (Cloud-Based)

- Essentials Version for Free and Easy Cloud
- Standard Version with Device License Fees for Advanced Features

Software Controllers

- Unlimited Scale

Hardware Controllers

- From 130 to 1300 Devices



Omada Access Points

- Ceiling Mount / Wall Plate / Outdoor / Wireless Bridge / Desktop / GPON APs
- 10G / 2.5G / GE / FE Ports
- Wi-Fi 7 / 6 / 5 / 4



Omada Campus / Aggregation / Access / Agile / Industrial Managed Switches

- L3 / L2 Managed Switches
- Easy Managed and Industrial Switches
- 25G / 10G / 2.5G / GE / FE Ports
- PoE++ / PoE+ / PoE



Omada Gateways

- 10G / 2.5G / GE
- Wired / Wireless / 4G+ LTE / DSL / Integrated 3-in-1 Gateways
- SD-WAN / SSL / WireGuard / IPSec VPN / OpenVPN



Omada Unmanaged Switches

- PoE++ / PoE+ / PoE
- Rackmount / Desktop / Wall-Mounting



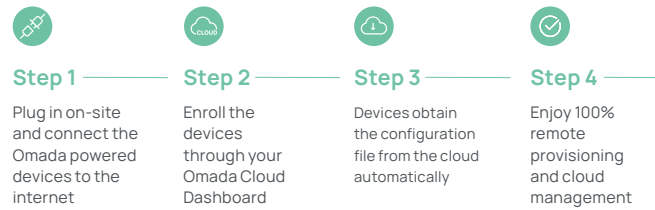
Accessories

- 100G / 25G / 10G / 1G SFP Modules and Cables
- Media Converters
- PoE Adapters
- Power Supply Modules

Higher Efficiency, Higher Security, and Higher Reliability

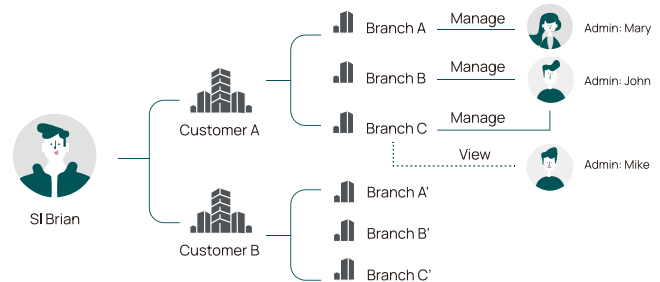
Zero-Touch Provisioning for Efficient Deployment

There's no need to send out an engineer for on-site configuration with Omada Cloud, ensuring a more efficient deployment.



Multi-User Privilege Assignment

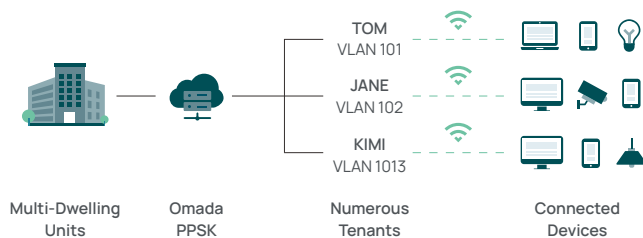
With multi-person management and multi-level permissions, you can assign administrators wherever necessary. Enjoy flexible network operations and maintenance.



Private Pre-Shared Key (PPSK)

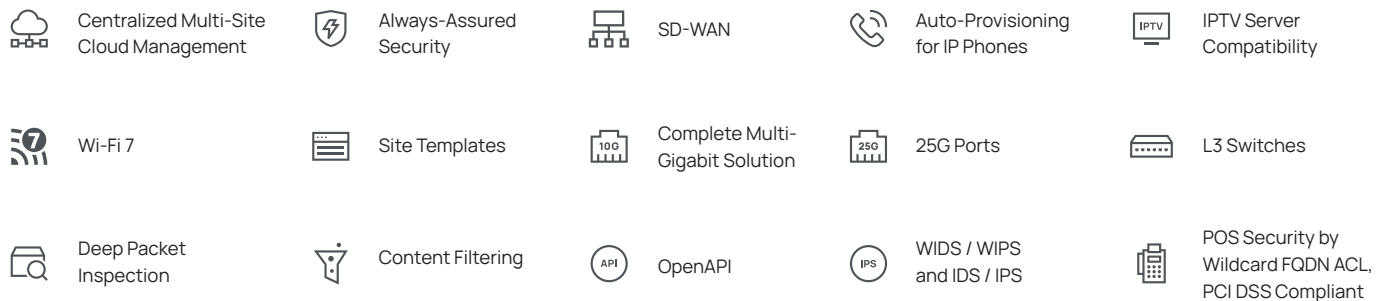
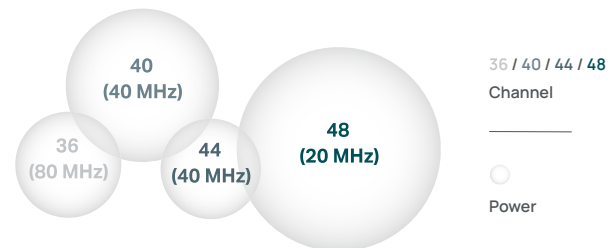
Creates unique pre-shared keys for individual users on the same SSID to enhance residents' network security.

- One Wi-Fi SSID
- Unique VLANs
- Unique Passwords



WLAN Optimization

Delivers powerful wireless performance and minimizes Wi-Fi interference through Automatic Channel Selection, Power Adjustment, Bandwidth Allocation, and Frequency Band Deployment.



Why Choose Omada for Business?

- ✓ Genuine Manufacturer and Experienced R&D for Strict Quality Control and Product Stability
- ✓ Cost Savings Through Vertically Integrated Facilities and Scaled Production
- ✓ Competitive Pricing and Exclusive Partner Benefits Help You Gain More Profit
- ✓ Up to 5-Year Extended Product Warranties*
- ✓ Local Tech Support and Sales Team
- ✓ Vast Local Inventory* to Ensure Quick Availability

*Applicable to Omada products in the US region and may vary between regions / countries.

Flexible Cloud Management Architecture

Increases Business Agility and Scalability

		Omada Central (Cloud-Based Controller)		On-Premises Controller (Hybrid Cloud)	
		Essentials	Standard	Omada Hardware Controller (OC400 / OC300 / OC200 / OC220)	Omada Software Controller
Pricing		Free	Device License Fee	Hardware Cost for Every Site; Free Cloud Access	Requires Constant PC/Server Operation; Free Cloud Access
Characteristics		<ul style="list-style-type: none"> • Easy Setup, Use, and Maintenance • Essential Features Without the Complexity Required by Larger-Scale Operations 	<ul style="list-style-type: none"> • Advanced Functions for Professional and Comprehensive Network Settings 	<ul style="list-style-type: none"> • No Need to Keep Your PC Running • Flexible On-Premises and Cloud Management 	<ul style="list-style-type: none"> • No Hardware Investment • Flexible On-Premises and Cloud Management
Designed for		<ul style="list-style-type: none"> • Surveillance Networking <ul style="list-style-type: none"> • Hostels • Villas / Big Houses • Small Offices 	<ul style="list-style-type: none"> • Medium / Large Multi-Site Networks • Hotels, Schools, Retail, MDU, Medium to Large Offices 	<ul style="list-style-type: none"> • Small/Medium Local Networks • Hotels, Retail, MDU, Small to Medium Offices and Schools 	<ul style="list-style-type: none"> • Medium/Large Local Networks • Hotels, Schools, Retail, MDU, Medium to Large Offices
Management Scale		Unlimited	Unlimited	OC200 / OC220: 130 Devices; OC300: 700 Devices; OC400: 1,300 Devices	Unlimited* (Recommend: ≤ 10,000 Devices)
Zero-Touch Provisioning		✓	✓	✓	✓
MSP Mode for Multi-Customer Management		-	✓	-	✓
Multi-User Privilege Assignment		✓**	✓	✓	✓
Configuration	VLAN	✓	✓	✓	✓
	Port Management	✓	✓	✓	✓
	PPSK	-	✓	✓	✓
	VPN	WireGuard VPN	L2TP / PPTP / SSL / OpenVPN / IPSec / WireGuard VPN		
	Fast Roaming & Mesh	✓	✓	✓	✓
Security	Port Isolation	✓	✓	✓	✓
	Portal Authentication	Simple Password / Voucher / Form Auth / External Portal Server	Simple Password / Voucher / Form Auth / Local User / SMS / Radius Server / External LDAP Server / External Portal Server		
	ACL	✓ (Gateway)	✓	✓	✓
	IPS/IDS	-	✓	✓	✓
	DPI	-	✓	✓	✓
Maintenance	Topology	✓	✓	✓	✓
	Troubleshooting	SSH / Network Check / Terminal	SSH / Network Check / Terminal / Packet Capture		
	Logs / Alerts	Basic	Advanced	Advanced	Advanced
	Open API	-	✓	✓	✓
	WLAN Optimization	-	✓	✓	✓

*Actual management scale of the Omada Software Controller depends on the PC/server's hardware specifications.

**All users are assigned with default network permissions. Customized permissions are not supported during configuration.

Featured Omada Solutions

Omada Agile Easy-Managed
Switches for Surveillance
with **Free Cloud**



Free Cloud – Omada Central Essentials

A Free and Easy Cloud-Based Management for Surveillance Networks

- ✓ Lifetime Free Cloud Management Without Additional Fees or On-Premises Controller
- ✓ Super-Easy Setup via Your Phone Without Unboxing - Save Time & Money
- ✓ Zero-Touch Provisioning (ZTP)
- ✓ Manage and Monitor Anytime via Omada App or Web Browser
- ✓ Comprehensive Managed Portfolio: Gateways, Managed Switches & APs
- ✓ Unlimited Management Scale for Multiple Sites

Omada Agile Easy-Managed Switches for Surveillance

At a Fair Price, Upgrade from Unmanaged to Cloud-Managed Switches for Easier Troubleshooting and Monitoring

- ✓ Easy to Use with Plug-and-Play Design and Simple Configuration
- ✓ Free and Easy Centralized Cloud Management via Omada Central Essentials
- ✓ Remotely Access Logs and Receive Real-time Alerts of Networks
- ✓ Easily Configure Surveillance Features Like 250m PoE & Remote Camera Reboot

Model		ES205GP	ES206GP	ES210GMP	ES220GMP	ES228GMP
Hardware	Gigabit PoE+ Ports	4	4	8	16	24
	Gigabit Non-PoE Ports	1x RJ45	2x RJ45	1x RJ45, 1x RJ45/SFP Combo	2x RJ45, 2x SFP	2x RJ45, 2x SFP
	PoE Standards	802.3af/at				
	PoE Budget	65 W	65 W	123 W	250 W	384 W
	Fanless	✓	✓	✓	-	-
	Installation	Desktop / Wall-Mounting			Rackmount	
Software	IntelliRecover (Enhanced PoE Auto Recovery)	✓	✓	✓	✓	✓
	820ft (250m) PoE in Extend Mode	✓	✓	✓	✓	✓
	Port Isolation	✓	✓	✓	✓	✓
	QoS	802.1p/DSCP QoS in Default; Priority Mode (Port-Based QoS); Customized QoS Settings				
	Other Features for Surveillance	Port Management for Remote Camera Reboot; Auto Loop Detection; VLAN; Cable Test; Camera Offline Alarm; App Management				

Omada Long-Range PtMP & PtP Wi-Fi Transmission, Perfect for Surveillance and More

Outdoor PtMP CCTV | Elevator PtP CCTV |
Building-to-Building PtP Enterprise Bridge |
Remote Wireless Coverage



Plug & Play PtP Connectivity



Up to 3.1mi (5km) Distance



Wider Beamwidth for Easier Deployment



Three Ports for More Devices



IP65 Weatherproof for Outdoor Use



EAP215-Bridge KIT

- Up to 3.1mi (5km) Distance
- 867 Mbps at 5 GHz (Wi-Fi 5)
- 3x Gigabit Ports
- 802.3af PoE / Passive PoE / DC Power
- IP65 & 6 KV Lightning Protection



EAP211-Bridge KIT

- Up to 0.62mi (1km) Distance
- 867 Mbps at 5 GHz (Wi-Fi 5)
- 3x Gigabit Ports
- 802.3af PoE / Passive PoE / DC Power
- IP65 & 6 KV Lightning Protection



EAP115-Bridge KIT

- Up to 3.1mi (5km) Distance
- 300 Mbps at 5 GHz (Wi-Fi 4)
- 3x 10/100 Mbps Ports
- 802.3af PoE / Passive PoE / DC Power
- IP65 & 6 KV Lightning Protection

Wi-Fi 7



EAP787 6Ghz
BE15000 High-Performance

- Tri-Band
- 8 Spatial Streams
- 802.3bt PoE
- 1x 10G Port
- Bluetooth
- Dedicated RF Scanning



EAP773 6Ghz
BE11000

- Tri-Band
- 6 Spatial Streams
- 802.3at PoE
- 1x 10G Port
- Bluetooth



EAP772 6Ghz
BE11000 Most Solid

- Tri-Band
- 6 Spatial Streams
- 802.3at PoE
- 1x 2.5G Port
- Bluetooth



EAP723 Entry-Level
BE5000

- 4 Spatial Streams
- 802.3at PoE
- 1x 2.5G Port
- Bluetooth



EAP725-Wall
BE5000 Wall Plate

- 4 Spatial Streams
- 802.3at/bt PoE
- 2x 2.5G + 2x 1G Ports
- PoE Pass-through
- Bluetooth

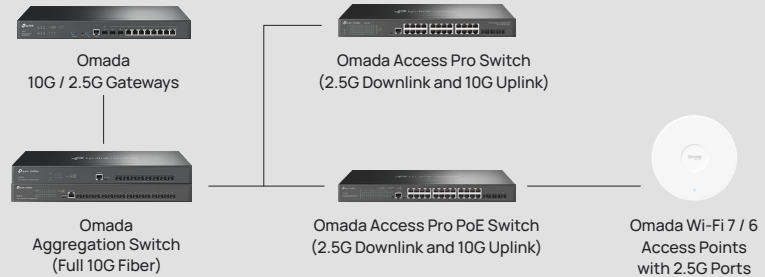


EAP772-Outdoor 6Ghz
BE11000 Outdoor

- Tri-Band
- 6 Spatial Streams
- 802.3at PoE
- 1x 2.5G Port
- Bluetooth
- GNSS
- IP68
- Outdoor 6 GHz with AFC
- Long-Range Tri-Band Omnidirectional Coverage

Future-Proof 2.5G Multi-Gigabit Network Solution

Unlocking the potential of your bandwidth and devices.



ER707-M2
Omada 2.5G VPN Router

- 2x 2.5G RJ45 Ports (1x WAN, 1x LAN)
- 5x Gigabit WAN/LAN Ports (1x SFP, 4x RJ45)
- Load Balancing on up to 6 WAN Ports
- High-Security VPN



SX3016F
Omada 10G SFP+ Aggregation Switch

- 16x 10G SFP+ Slots
- 320 Gbps Switching Capacity
- 1+1 Redundant Power Supply
- Static Routing and ERPS



SG3428XPP-M2
Omada 2.5G PoE++ Access Pro Switch

- 8x 2.5G PoE++ Ports (Max 60W PoE per Port)
- 16x 2.5G PoE+ Ports (Max 30W PoE per Port)
- 4x 10G SFP+ Slots
- 500W PoE Power Budget
- Static Routing and ERPS



SG2210XMP-M2
Omada 2.5G PoE+ Access Pro Switch

- 8x 2.5G PoE+ Ports (Max 30W PoE per Port)
- 2x 10G SFP+ Slots
- 160W PoE Power Budget
- Static Routing
- Desktop & Fanless

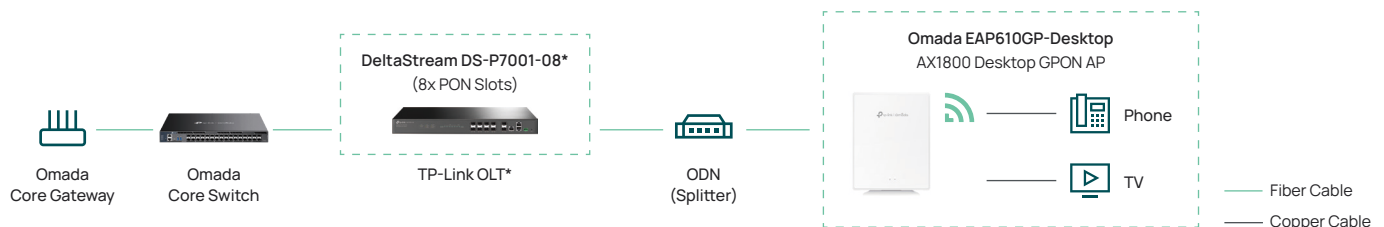
Optical Solution with Omada GPON APs

✓ Comprehensive Optical Solution

✓ Unified Management for OLT* and Omada Devices

✓ One Fiber, Multiple Services

✓ PPSK & Captive Portal



*Certain TP-Link DeltaStream OLT models with specific firmware versions support Omada SDN central management. Please refer to the official website for a list of compatible models.

Reliable Networking for Diverse Scenarios

Easy Setup, Management, and Troubleshooting for SIs/MSPs/Installers

Simple Deployment and Setup

- Easy On-Site Setup with Auto Device Identification and One-Click Adoption
- Easy Remote Setup with ZTP
- Automatic Topology Recognition
- Site & Templates for Instant Configuration
- One-Click PoE Extend for Easier Camera Deployment and Setup

Easy Cloud Management

- Remote Operation & Management
- Visualized Management
- Multi-Site Management
- Multi-User Privilege Assignment
- One-Click Auto QoS and Port Isolation
- Enhance Security and Quality of Cameras

Remote Maintenance and Troubleshooting

- Intelligent Anomaly Detection
- Topology for Quick Troubleshooting
- Access Logs and Receive Alert Notifications at Any Time
- Integrated Troubleshooting Tools (Cable Test, Ping, SSH, etc.)
- Camera Offline Alarm



Offices



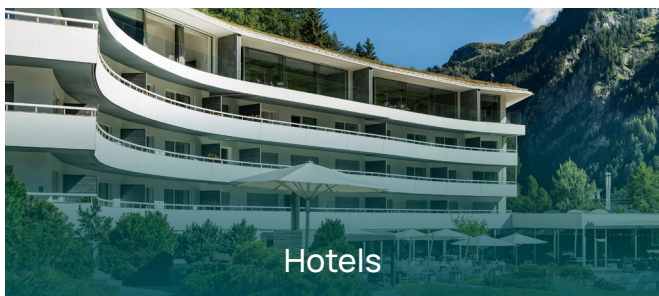
Restaurants / Stores

Networking for Office Wi-Fi, Cameras, and IP Phones

- **SD-WAN** for One-Click Multi-Site VPN Setup and Easier Maintenance
- One-Click QoS and PoE Extend for Cameras
- **Auto Provisioning** for Phones with LLDP-MED & DHCP Option 66/150
- Voice VLAN and QoS Ensure **Voice Quality**
- **Guest Wi-Fi** and Portal with RADIUS and LDAP Authentication
- 802.11k/v/r **Seamless Roaming**
- **4G and Multi-WAN** Backup and Load Balancing
- SSL/WireGuard/GRE/IPSec/PPTP/L2TP VPN & OpenVPN
- **Content/URL Filtering**; DPI for application identification and control

Stable Networking for POS System

- **SD-WAN** for One-Click Multi-Site VPN Setup and Easier Maintenance
- Omada 4G Multi-WAN gateways with **4G backup** prevent network failover
- **PCI DSS compliancy and Wildcard FQDN ACL** protect payment card data
- Captive Portal
- **Seamless Wi-Fi Connectivity** ensures uninterrupted connectivity for POS terminals on-the-go
- Open API facilitates seamless integration with third-party applications such as inventory and POS systems



Hotels



MDUs

Reliable Networking Satisfies Guests

- Mesh Wi-Fi 7 with seamless roaming keeps guests always connected
- **Guest Wi-Fi** with multiple guest authentications, including **captive portal**, LDAP, Text with Twilio
- Supports **hotel PMS** thru RADIUS server
- IGMP Snooping and IPTV Server Compatibility for easy **IPTV setup and management**
- **Voice Network** and **IP PBX** compatibility for IP Phone deployment and management; Supports Analog Phone with PXS port

Business-Grade Networking Solution

- **Private Pre-Shared Key (PPSK)** and **Dynamic VLAN** offer Business-Grade security and flexibility
- **Up to 4,000 PPSKs** with external RADIUS server integration
- Host the PPSKs on the Omada controller for smaller MDUs to **cut OPEX costs**
- Supports **AAA servers** for new revenue streams
- **Compact Device Design** for cabinets and **Fanless Design** for quiet operation
- **Protection** with ACL, URL Filtering, Application Control, Attack Defense, and IDS/IPS
- **EoGRE (Ethernet over GRE)** to uniformly manage multiple tenant devices

Typical Omada Managed Products

Explore more Omada managed products, Unmanaged switches, and Accessories at: <https://www.omadanetworks.com/>

● Hot ● New ● Coming Soon

Type		Model	Key Specs & Features
Access Points	Wi-Fi 7 Ceiling Mount	EAP787	BE15000, 1x 10G Port. Dedicated RF Scanning , Tri-Band, 6GHz, MLO, 4K-QAM, 320MHz, 802.3bt PoE/DC, Bluetooth, Mesh, Seamless Roaming
		EAP773 / EAP772	BE11000, 1x 10G / 1x 2.5G Port. Tri-Band, 6GHz, MLO, 4K-QAM, 320MHz, 802.3at PoE/DC, Bluetooth, Mesh, Seamless Roaming
		EAP723	BE5000, 1x 2.5G Port. 4K-QAM, 802.3at PoE/DC, Bluetooth, Mesh, Seamless Roaming
	Wi-Fi 7 Outdoor	EAP772-Outdoor	BE11000, 1x 2.5G Port. Tri-Band Omnidirectional, 6GHz, AFC , 802.3at PoE, IP68, Bluetooth, Mesh, Seamless Roaming
	Wi-Fi 7 Wall Plate	EAP725-Wall	BE5000, 2x 2.5G + 2x 1G Ports. 802.3at/bt PoE, PoE Pass-through, Bluetooth, Mesh, Seamless Roaming
	Wi-Fi 6	EAP660 HD	AX3600, 1x 2.5G Port. Concurrent clients up to 1000, 802.3at PoE/DC, Bluetooth, Mesh, Seamless Roaming
	High Density	EAP620 HD	AX1800, 1x 1G Port. Concurrent clients up to 1000, 802.3at PoE/Passive PoE/DC, Mesh, Seamless Roaming
		EAP683 UR	AX6000, 1x 2.5G Port. Ultra-range Wi-Fi coverage, 802.3at PoE/DC, Bluetooth, Mesh, Seamless Roaming
	Wi-Fi 6 Ultra Range	EAP653 UR	AX3000, 1x 1G Port. Ultra-range Wi-Fi coverage, 802.3at PoE/Passive PoE/DC, Bluetooth, Mesh, Seamless Roaming
		EAP673	AX5400, 1x 2.5G Port. 802.3at PoE/DC, Bluetooth, Mesh, Seamless Roaming
	Wi-Fi 6 Ceiling Mount	EAP653	AX3000, 1x 1G Port. 802.3at PoE/Passive PoE/DC, Bluetooth, Mesh, Seamless Roaming
		EAP613	AX1800, 1x 1G Port. 802.3at PoE/Passive PoE/DC, Mesh, Seamless Roaming
	Wi-Fi 6 Wall Plate	EAP655-Wall / EAP615-Wall	AX3000 / AX1800, 4x 1G Ports. 802.3at PoE for PoE Passthrough or 802.3af PoE, Seamless Roaming
	Wi-Fi 6 Desktop	EAP650-Desktop	AX3000, 4x 1G RJ45 Ports, 1x RJ11 Port. 802.3af/at PoE/DC, PoE Passthrough, Mesh, Seamless Roaming, VoIP
		EAP668-Outdoor HD	AX3600, 1x 10G SFP+, 1x 2.5G 802.3at/bt PoE Input Port, 1x 1G 802.3at PoE Out Port. Concurrent clients up to 1000, External Antennas, IP68, Bluetooth, Mesh, Seamless Roaming
Gateways	Wi-Fi 6 Outdoor	EAP625-Outdoor HD	AX1800, 1x 1G Port. Concurrent clients up to 1000, External Antennas, 802.3at PoE/Passive PoE, IP68, Mesh, Seamless Roaming
		EAP650-Outdoor	AX3000, 1x 1G Port. 802.3at/Passive PoE, IP68, Mesh, Seamless Roaming
	Wireless Bridge KIT	EAP215-Bridge KIT / EAP211-Bridge KIT / EAP115-Bridge KIT	AC867 (5 GHz) & 3x 1G Ports (EAP215-Bridge, EAP211-Bridge). N300 (5 GHz) & 3x FE Ports (EAP115-Bridge). Up to 5km (3.1mi) / 1km (0.62mi) PtP & PtMP transmission (EAP215-Bridge & EAP115-Bridge / EAP211-Bridge), 802.3af PoE (v3)/Passive PoE/DC, IP65, Plug & Play Setup , Auto-Pairing
		EAP650GP-Desktop	AX3000, 1x GPON, 4x 1G RJ45 (2x 802.3af PoE Out), 1x RJ11 Port. DC Power Supply, Desktop/Wall-mounting, Seamless Roaming, VoIP
	GPON	EAP610GP-Desktop	AX1800, 1x GPON, 4x 1G RJ45, 1x RJ11 Port. DC Power Supply, 802.3af PoE Out, Desktop/Wall-mounting, Seamless Roaming, VoIP
		ER8411	10G Ports. 2x 10G SFP+, 1x GE SFP, 8x GE RJ45, 2x USB 3.0, up to 10 WAN, 1+1 RPS
	Wired VPN	ER707-M2	2.5G Ports. 2x 2.5G, 1x GE SFP, 4x GE RJ45, up to 6 WAN
		ER7206 / ER605	GE Ports. ER7206: 1x GE SFP, 5x GE RJ45, 1x USB 3.0, up to 5 WAN. ER605: 5x GE, 1x USB 2.0, up to 3 WAN
	Integrated	ER7212PC	GE Ports. 3-in-1 (Gateway & Controller & PoE+ Output), 2x GE SFP, 10x GE (8x PoE+) RJ45 ports, up to 4 WAN, 110W PoE Budget
		ER706W	AX3000 Wi-Fi 6, GE Ports. 1x GE SFP, 5x GE RJ45, 1x USB 3.0, up to 5 WAN
	Wi-Fi VPN	ER706W-4G	4G+ Cat6 300 Mbps, AX3000 Wi-Fi 6. 1x SFP, 5x GE, 1x USB 3.0, up to 5 WAN
		ER703WP-4G-Outdoor	4G+ Cat6 300 Mbps, AX3000 Wi-Fi 6. 3x GE Ports (1x PoE in, 2x PoE out), up to 2 WAN, IP55
	4G Wi-Fi VPN	SG5452X / SG5428X	48/24x GE, 4x 10G SFP+ Slots. 1x USB, Console ports, Stacking (up to 4 units), RIP, OSPF, ERPS, Static Routing
		SG5452XMPP / SG5428XMPP	8x GE PoE++, 40/16x GE PoE+, 4x 10G SFP+ Slots. 1x USB 2.0, Console ports, Max 770W/500W PoE Budget, Stacking (up to 4 units), RIP, OSPF, ERPS, Static Routing
Managed Switches	Campus (L3), Non-PoE	SX3206HPP	4x 10G PoE++ (up to 60W PoE per port), 2x 10G SFP+ Slots. 802.3af/at/bt (type 3), 200W PoE Budget, Console ports
		SX3832MPP	24x 10G PoE++ (up to 90W PoE per port), 8x 10G SFP+ Slots. 802.3af/at/bt (type 4), 770W PoE Budget, Console ports
	Access Max, 10G PoE	SG3428XPP-M2	8x 2.5G PoE++ (up to 60W PoE per port), 16x 2.5G PoE+, 4x 10G SFP+ Slots. 802.3af/at/bt (type 3), 500W PoE Budget, Console ports
		SG3218XP-M2 / SG3210XHP-M2	8x 2.5G Non-PoE (SG3218XP-M2), 8x 2.5G PoE+, 2x 10G SFP+ Slots. 240W PoE Budget, Console ports, Static Routing, 802.1x, ERPS
	Access Pro, 2.5G PoE with 10G Uplink	SG2210XMP-M2	8x 2.5G PoE+, 2x 10G SFP+ Slots. 160W PoE Budget, Static Routing, 802.1Q/Voice VLAN, ACL, CLI, SNMP, Desktop, Fanless
		SG3452XP / SG3428XMP	48/24x GE PoE+, 4x 10G SFP+ Slots. 500W/384W PoE Budget, Console ports, Static Routing, 802.1x, ERPS
	Access Plus, GE PoE with 10G Uplink	SG3452XMPP / SG3428XMPP	8x GE PoE++ (90W PoE per port), 40/16x GE PoE+, 4x 10G SFP+ Slots. 802.3af/at/bt (type 4), 750W/500W PoE Budget, Console ports
		SG3452P / SG3428MP	48/24x GE PoE+, 4x GE SFP Slots. 384W PoE Budget, Console ports, Static Routing, 802.1x, ERPS
	Access, GE PoE	SG2428P / SG2218P	24/16x GE PoE+, 4/2x GE SFP Slots. 250W/150W PoE Budget, Fanless Design (SG2218P), Static Routing, 802.1Q/Voice VLAN, ACL, CLI, SNMP
		SG2452LP / SG2428LP	48/24x GE (32/16x PoE+), 4x GE SFP Slots. 230W/150W PoE Budget, Fanless Design, Static Routing, 802.1Q/Voice VLAN, ACL, CLI, SNMP
	Access, GE PoE	SG2016P / SG2008P	16x GE (8x PoE+) / 8x GE (4x PoE+). 120W/62W PoE Budget, Fanless Design, Static Routing, 802.1Q/Voice VLAN, ACL, CLI, SNMP
		SG2210MP / SG2210P	8x GE PoE+, 2x GE SFP Slots. 150W/61W PoE Budget, Fanless Design (SG2210P), Static Routing, 802.1Q/Voice VLAN, ACL, CLI, SNMP
	Aggregation, SFP+	SG2005P-PD	1x GE PoE++ in, 4x GE PoE+ out Ports. Max 64W PoE Budget, IP55 Waterproof & Dustproof, Extend PoE up to 656 ft
		SX3032F / SX3016F / SX3008F	32/16/8x 10G SFP+ Slots. 1+1 RPS (SX3032F & SX3016F), Console ports, Static Routing, 802.1x, ERPS
	Access Max, 10G	SX3832	24x 10G RJ45, 8x 10G SFP+ Slots. Console ports, Static Routing, 802.1x, ERPS
	Access Pro, 2.5G	SG3428X-M2 / SG3210X-M2	24/8x 2.5G RJ45, 4/2x 10G SFP+ Slots. Console ports, Static Routing, 802.1x, ERPS
	Access Plus, GE	SG3452X / SG3428X	48/24x GE RJ45, 4x 10G SFP+ Slots. Console ports, Static Routing, 802.1x, ERPS
		SG3452 / SG3428	48/24x GE RJ45, 4x GE SFP Slots. Console ports, Static Routing, 802.1x, ERPS
	Access, GE Non-PoE	SG3210 / SG2218 / SG2008	8x GE RJ45 & 2x GE SFP Slots & Console ports (SG3210); 16x GE RJ45 & 2x GE SFP (SG2218). 8x GE RJ45 (1x PoE Input)
		ES210X-M2 / ES206X-M2	8/5x 2.5G, 2/1x 10G SFP+ Slots. Easy to use
	Agile	ES228GMP / ES220GMP	26/18x GE (24/16x PoE+), 2x SFP Slots. 384W/250W PoE Budget, easy to use
		ES210GMP	9x GE (8x PoE+), 1x GE/SFP Combo Port. 123W PoE Budget, easy to use, Fanless Design
		ES206GP / ES205GP	6/5x GE Ports (4x PoE+). 65W PoE Budget, easy to use, Fanless Design
		ES224G / ES216G / EG208G / ES205G	24/16/8/5x GE Ports. Easy to use

*Maximum wireless signal rates are the physical rates derived from IEEE Standard 802.11 specifications. Actual wireless data throughput, wireless coverage, and connected devices are not guaranteed and will vary as a result of network conditions, client limitations, and environmental factors, including building materials, obstacles, volume and density of traffic, and client location.

Specifications are subject to change without notice.
TP-Link and Omada are trademarks of TP-Link Systems Inc. and its affiliates.
Copyright ©2025 TP-Link Systems Inc. All rights reserved.

E-Mail: b2bsales.usa@tp-link.com
Please visit www.omadanetworks.com/omada-sdn/
to learn more about Omada Cloud Solution



PN: 8300000270