

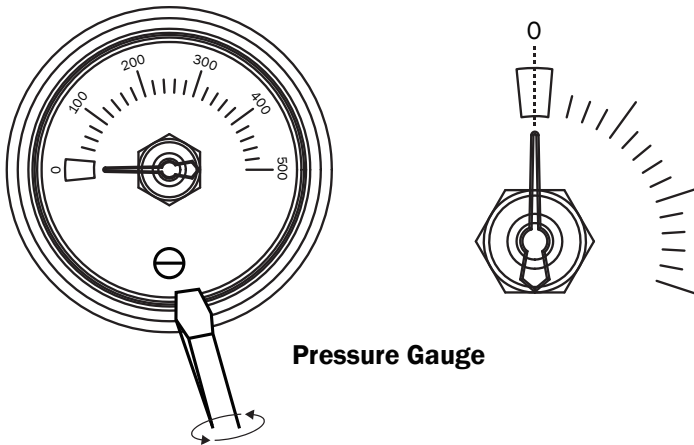
# Installation and Operation Guide

## Remove Filter Package (If Any)

Remove the packages of the filter before the first usage.

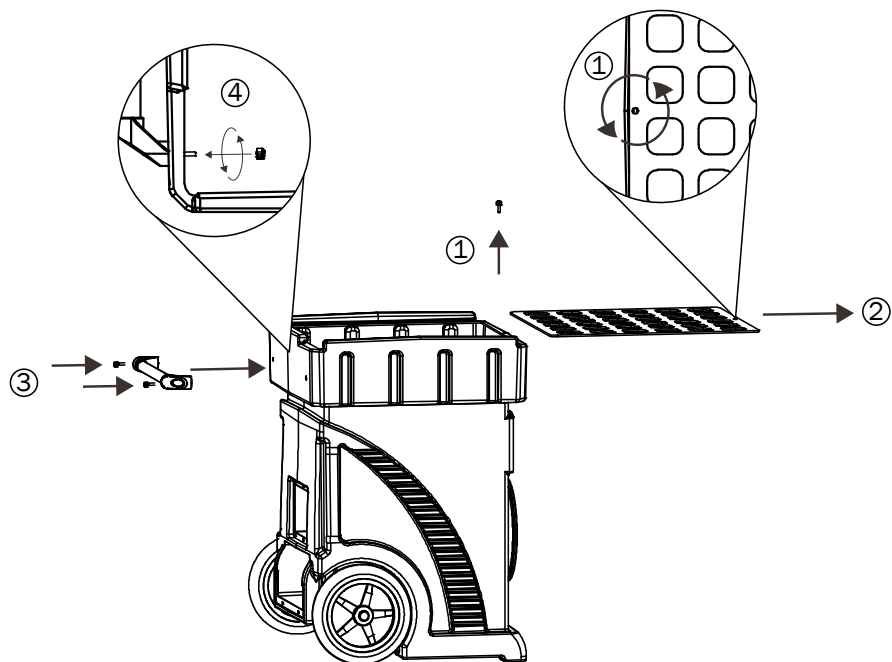
## Zero Setting

- The accuracy of the pressure gauge might be affected by transportation.
- Before the first usage, you should zero the pressure gauge in order to ensure the accuracy of the measurement.



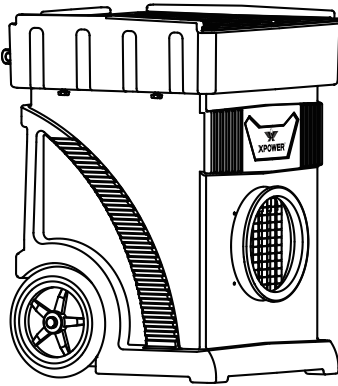
- Use a straight screwdriver to adjust the zero setting screw on the pressure gauge, until the pointer stays in the middle of the zero sector.

## Installing the Handle



- (1) Screw off the hex screw with a hex screw driver on the inlet grill cover.
- (2) Take out the inlet grill cover.
- (3) Put the screws through the holes on handle and the back of the machine housing.
- (4) Fasten the screws with the nuts from the inner surface of the machine.

## Extension Setup (Optional)



### Exhaust Ducting

- Turn off the machine.
- Attach the ducting hose to the exhaust.

## Selecting a Location (Important)

- **Enclosed Area:** For optimal efficiency and longer filter lifespan, the Air Scrubber should be operated in an enclosed area. Keep all doors, windows and other outside entrances to the room closed.
- **Air Circulation:** It's suggested to have a constant efficient air circulation inside your working area.
- **Environment Humidity:** For optimal efficiency and higher filter lifespan, the Air Scrubber should not be operated in an environment with a high relative humidity level. High humidity level could cause blockage and damage to filters.
- **Power Cord:** The power cord has a length of 25 feet (7.6 meters). Select a location where the power cord can reach the power source.
- **Inlet and Outlet Orientation:** Also pay attention to the orientation of the air inlet and air outlet. Make sure the airflow won't influence any object nearby the Air Scrubber.
- **IMPORTANT:** The effectiveness of the Air Scrubber can be influenced by different factors. You may also find that installing multiple Air Scrubbers may be required for larger enclosed areas.