



Lenovo® recommends Windows® 7 Professional.

THINKPAD
X220 NOTEBOOK



THE NEW LENOVO® THINKPAD® X220 NOTEBOOK

FREEDOM. MOBILITY. PRODUCTIVITY IN AN ULTRAPORTABLE PACKAGE

Engineered for today's mobile professionals, the ThinkPad® X220 features the quality and performance Lenovo users have come to expect and increased audio, video and communications features that respond to the increased use of laptops as a multimedia and communications tools in business. The ultraportable ThinkPad X220 comes equipped with second generation Intel® Core™ processors that are 20% faster than previous generations with 2x the graphics performance.

ThinkPad has improved on its industry-leading full-size keyboard design and nimble TrackPoint® by adding an advanced buttonless touchpad that's up to 45% larger than last year. Lenovo Enhanced Experience 2.0 for Windows® 7 further enhances the user experience with industry's best boot up times. These best-in-class features, combined with Lenovo's reputed durability and reliability, make the ThinkPad X220 a must-have for mobile professionals who need the best from their notebooks.

TOP REASONS TO OWN

- Powerful computing with second generation Intel® Core™ i7 processors
- A 1.36kg MIL-SPEC tested ultraportable for extreme mobility
- Enhanced communication and multimedia experience
- Up to 23 hour battery life with the slim external battery pack
- Exceptional usability with Lenovo's industry-leading keyboard, new Buttonless Touchpad

LENOVO ENHANCED EXPERIENCE 2.0 FOR WINDOWS® 7. FASTER AND OPTIMIZED FOR BUSINESS.

Lenovo Enhanced Experience 2.0 for Windows® 7 uses RapidBoot technology to start your PC on average 20 seconds faster than a typical Windows® 7 computer*. And with superior web conferencing and robust security features, you'll benefit from increased productivity at the office. Find out more at www.lenovo.com/win7ee

*Compares averaged data from Lenovo EE 2.0 PCs with averaged data from 42 competitor products of similar configuration. Testing conducted by CNET Labs, Beijing in November 2010, using the independent Microsoft VTS tool to measure start-up, shutdown, resume and other Windows® 7 performance measurements. Data from competitor and Lenovo PCs were averaged and compared to calculate the claims used. Performance will vary by model and configuration.

lenovo



Lenovo® recommends Windows® 7 Professional.

THINKPAD
X220 NOTEBOOK



CUTTING-EDGE PERFORMANCE – FOR MOBILE PRODUCTIVITY

The ThinkPad® X220 notebook is designed for today's mobile professionals:

- The same full-powered second generation Intel® Core™ processors as many 14" and 15" laptops
- Fastest boot times with RapidBoot technology and Lenovo® Enhanced Experience 2.0 for Windows® 7
- Up to 10x faster data transfer with USB 3.0¹
- Intel® HD Graphics provides better performance on applications such as Internet Explorer® 9, FireFox® 4, Adobe Flash® 10.1

EXCEPTIONAL BATTERY LIFE – FOR AN ALL-DAY-LONG NOTEBOOK

Battery options to last as long as your day.

- Up to 23 hours with the all new external battery pack
- Up to 15 hours with the 9-cell battery
- 30% longer battery life with Low Power Multimedia Mode
- Turbo Boost+ optimizes Intel's Turbo Boost through Lenovo's Power Manager for higher performance or enhanced battery life

THINKPLUS® SUPPORT

Lenovo's award winning Warranty Service and Support optimize productivity and end-user satisfaction by helping you concentrate more on your business objectives.

- **ThinkPlus Priority Support²**
Saves time, reduces costs and maximizes productivity, by providing you with faster, 24x7, direct access to advanced-level skilled technicians for hardware and software issues (phone based).
- **ThinkPlus Warranty Upgrades**
Maximize PC uptime and productivity by providing convenient and fast repair services at your place of business up to 5 years of on-site service with next business day response.
- **ThinkPlus Warranty Extensions**
Help accurately budget for PC expense, protect your investment and lower the overall TCO with a fixed-term, fixed-cost service solution.

EXCELLENT COMMUNICATIONS

Internet Voice and Voice Calls with the Quality of a traditional Telephone

- Choose between Private Chat mode that eliminates background noise when one person is talking or Conference Call mode that picks up sounds from across a room when many participants are around a conference table
- Keyboard noise suppression minimizes key clicks from being heard during voice calls

OUTSTANDING USER EXPERIENCE – FOR ENHANCED EFFICIENCY

Today's enterprise workers need a laptop that is comfortable to use, hassle free and the ThinkPad X220 fits the bill.

- Microphone and speaker mute buttons with LED indicators so that you know for sure that the microphone is muted during a conference call
- An improved latching design
- The new buttonless touchpad provides a 45% larger surface area than before
- WWAN for freedom to work from anywhere, anytime²

THINKPLUS PROTECTION

Lenovo's Protection Services help you avoid unbudgeted repair costs, secure your data, save money and achieve peace of mind.

- **ThinkPad® Protection (TPP)**
Provides convenient coverage for unexpected damage, unintentional drops and minor spills, thereby helping you eliminate unplanned repair costs.
- **Hard Disk Drive Retention**
Allows you to retain the hard drive, should it happen to fail, thus helping you protect your valuable data.

¹ Compared to USB 2.0

² ThinkPlus Priority Support Availability

Limited to Austria, Belgium, Denmark, Finland, France (excl. DOM/TOM and all other overseas Territories and Dependencies), Germany, Ireland, Luxembourg, Italy, Norway, Netherlands, Spain, Sweden, Switzerland and UK (mainland only).

lenovo



Lenovo® recommends Windows® 7 Professional.

THINKPAD
X220 NOTEBOOK

The Lenovo® ThinkPad® X220 Notebook Specifications

DESCRIPTION	X220	
Chipset/CPU	Intel® Core™ i7-2620M Processor (2.7GHz, 4MB L3 Cache) USB 3.0 Intel® Core™ i5-2540M Processor (2.5GHz, 3MB L3 Cache) Intel® Core™ i5-2520M Processor (2.5GHz, 3MB Cache)	Intel® Core™ i5-2410M Processor (2.3GHz, 3MB L3 Cache) ² Intel® Core™ i3-2310M Processor (2.1GHz, 3MB L3 Cache) ²
Preloaded OS (Operating System)	Genuine Windows® 7 Home Basic 32-bit* Genuine Windows® 7 Home Premium 32-bit* Genuine Windows® 7 Home Premium 64-bit* Genuine Windows® 7 Professional 64-bit	
Display	12.5" HD (1366x768) LED Backlit Display 12.5" Premium HD (1366x768) LED Backlit Display (w/ extra bright wide-viewing angle IPS display)	
Navigation	Trackpoint® & Buttonless Touchpad	
Memory	Up to 8GB DDR3 - 1333MHz (2 DIMM Slots)	
Weight	<1.3kg(3.0 lbs)	
Form Factor	305.0mm x 206.5mm x 19-34.6mm	
I/O (Input/Output) Ports	Display Port VGA Port 3 USB 2.0 port (1 Always On port; 1 optional USB 3.0) ³	
Slots	54mm Express Card Slot	SD Card Reader
Optical Drive	UltraBase™ with Multiburner	UltraBase™ with Multiburner with Write Disabled ⁴
Multimedia	Dual digital microphones	Combo Microphone Headphone Jack
Graphics	Intel® Integrated HD Graphics	
Internal PCIe Slots	1 full, 1 half	
WLAN	Intel® Centrino® Ultimate-N 6300 (Puma Peak) 3x3 AGN (performance) Intel® Centrino® Advanced-N 6205 (Taylor Peak) 2x2 AGN (performance)	
WWAN	Gobi™ 3000 Sierra Wireless EV-DO/HSPA WWAN Minicard Ericsson HSPA + WWAN Minicard (F5521gw)	LeadCore TD-SCDMA WWAN Minicard (LC5730D) Huawei EV-DO WWAN Minicard (EM660)
HDD	160GB Hard Disk Drive, 7200rpm ⁴ 250GB Hard Disk Drive, 5400rpm	250GB Hard Disk Drive, 7200rpm with limited OPAL FDE Technology ⁴ 320GB Hard Disk Drive, 5400rpm
SSD	4GB Solid State Flash Drive, Serial ATA ⁴ Intel® 80GB Micro Solid State Drive, Serial ATA ⁵	128GB Solid State Drive, Serial ATA Intel® 160GB Solid State Drive, Serial ATA
Webcam	720p High Definition camera	
Battery Life	Up to 23 hours with the 9 cell battery along with the ThinkPad external battery pack Up to 15 hours with a 9 cell battery	

* Available via CTO only

¹ The ThinkPad X220 has Linux® Certifications for Redhat®, Novell® & Ubuntu.

² Actual availability may vary in each country.

³ USB 3.0 available only w/ i7-2620M CPU.

⁴ Special Bid and CTO only. No standard POR models.

⁵ 80GB mSATA SSD fits in the WWAN slot. As a result, it is not available with WWAN.



Lenovo® recommends Windows® 7 Professional.

THINKPAD
X220 NOTEBOOK

The Lenovo® ThinkPad® X220 Software

SUPPORTED TWT TOOLS (READY TO INSTALL)

- ThinkVantage® Toolbox v 1.4
- Lenovo® ThinkVantage Tools v2.0
- ThinkVantage Rescue and Recovery® 4.3
- ThinkVantage Product Recovery 9.0
- ThinkVantage Password Manager 4.0
- ThinkVantage Utilities Musashi 1.0
- ThinkVantage Access Connections™
- ThinkVantage System Update 4.0
- ThinkVantage SimpleTap
- Hardware Password Manager
- ImageUltra™ Builder
- System Migration Assistant 6.0
- Client Security Software 8.3

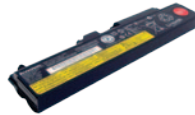
PRE-LOADED APPLICATIONS

- Microsoft® Office Starter 2010
- Microsoft® Live Essentials
- Norton® Internet® Security (30-day trial)
- Microsoft® Touchpad (X200 Tablet Only)
- Japan i-Filter
- Skype™ Application 4.2
- Corel DVD Movie Factory
- Corel Burn Now
- Intervideo® WinDVD®

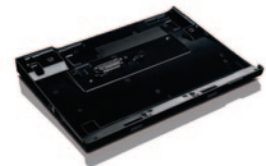
Notebook Options



Lenovo 90W Ultraslim
AC/DC Combo Adapter
(41R44xx)



ThinkPad Battery 29 3-cell (0A36281)
ThinkPad Battery 29+ 6-cell (0A36282)
ThinkPad Battery 29++ 9-cell (0A36283)



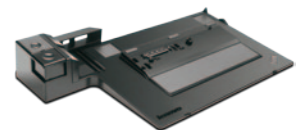
ThinkPad Ultrabase™ Series 3 (0A33932)



Lenovo Power Hub
(57Y46xx)



(55Y3709) 1GB PC3-10600
(55Y3710) 2GB PC3-10600
(55Y3711) 4GB PC3-10600



ThinkPad Ultrabase™ Series 3 (0A33932)
ThinkPad Mini Dock Series 3 (45N66xx)
ThinkPad Mini Dock Plus Series 3 (45N669x)



(41U5062) ThinkPad Ultraportable Case
(43R2480) ThinkPad Executive Leather Case



Kensington MicroSaver Cable Lock
from Lenovo (73P2582)



ThinkPad Battery 19+ 6-cell
Slim External (0A36280)

www.lenovo.com/think/europe

©2011 Lenovo. All rights reserved.

Availability: Offers, prices, specifications and availability may change without notice. Lenovo is not responsible for photographic or typographic errors. **Warranty:** Warranty Support Dept., EMEA Services, Lenovo, Eisteinova 21, 851 01 Bratislava, Slovakia. Lenovo makes no representation or warranty regarding third-party products or services. **Trademarks:** Lenovo, the Lenovo logo, Rescue and Recovery, ThinkStation, ThinkVantage and ThinkVision are trademarks or registered trademarks of Lenovo. Microsoft, Windows and Vista are registered trademarks of Microsoft Corporation. Intel, the Intel logo, Intel Core, Core Inside, Xeon and Xeon Inside are registered trademarks of Intel Corporation in the U.S. and other countries. Other company, product and service names may be trademarks or service marks of others.

Visit www.lenovo.com/safecomputing periodically for the latest information on safe and effective computing.

lenovo